

*HubbleBisbee*  
of Long & Foster Real Estate

CHRISTIE'S  
INTERNATIONAL REAL ESTATE



11820 MAYS CHAPEL ROAD  
LUTHERVILLE AT FIVE FARMS

GREEN SPRING STATION

2330 W Joppa Road, Suite 104  
Lutherville, MD 21093  
410-321-1411



KAREN HUBBLE BISBEE

Associate Broker, GRI, ABR  
[Karen@HubbleBisbee.com](mailto:Karen@HubbleBisbee.com)  
443-838-0438

[WWW.HUBBLEBISBEE.COM](http://WWW.HUBBLEBISBEE.COM)

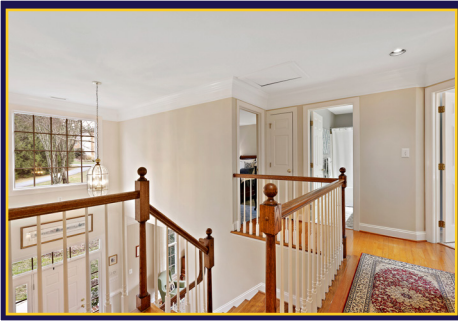




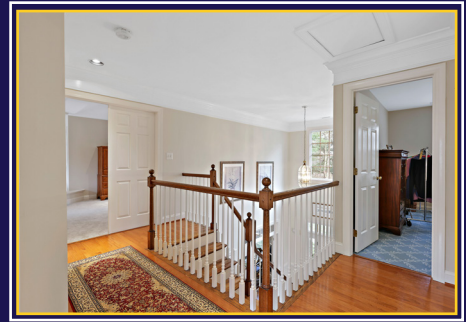












### FOYER 18'0" X 9'0"

- Paneled entry door with transom and full-length sidelights
- Two-story
- Hardwood flooring
- Open oak staircase with hardwood handrails and painted spindles
- Large window above entry
- Built-up crown molding
- Chair rail
- Powder Room with hardwood flooring, pedestal sink, 2 wall sconce lights with shades and exhaust fan
- Closet
- Brass/beveled glass hanging lantern
- Concealed staircase to Lower Level
- Access to Kitchen
- Wide portal to Living Room
- French doors with transom to Study

### STUDY 12'3" X 12'0"

- Hardwood flooring
- Two windows with custom swag treatments
- Built-up crown molding

### LIVING ROOM 18'2" X 13'2"

- Hardwood flooring
- Wide walk-in bay window and 2 additional windows with custom drapery treatments
- Built-up crown molding

- Two floor-length bookcases flanking wide portal to Dining Room

### DINING ROOM 15'3" X 15'3"

- Hardwood flooring
- Two walk-in bay windows
- Built-up crown molding
- Chair rail
- Brass 6-light chandelier with glass shades
- Swinging door to Kitchen

### KITCHEN 22'2" X 17'2"

- Hardwood flooring
- Rutt Regency shaker style wood cabinetry including espresso-finish island/breakfast bar, pantry cabinets, roll-out pantry cabinet, ceiling height cabinets, roll-out trays, wine racks, custom range hood enclosure, pull-out trash/recycle bins, dovetailed drawers, matching crown trim and polished nickel pulls (renovated in 2016)
- Textured fieldstone counters with marble finish quartzite on island
- Marble backsplashes
- Sub-Zero refrigerator with 2 freezer drawers and matching front panels (2016)
- Under-counter glass-door wine cooler (2016)
- Scotsman icemaker with matching front panel (2016)

- Wolf stainless steel 6-burner gas range with range vent and lighting (2016)
- Wolf stainless steel built-in microwave (2016)
- Monogram stainless steel dishwasher (2016)
- Farmhouse double sink with disposal
- Breakfast area in walk-in bay window with pendant light with art glass shade
- Bay window at sink
- Two polished nickel/glass pendant lights above island
- Recessed lighting
- Under-cabinet lighting
- Pantry closet
- Access to Laundry Room
- Access to Mud Room
- Open flow to family Room through knee-walls with columns

### FAMILY ROOM 26'0" X 18'7"

- Wall-to-wall carpeting
- Coffered ceiling trimmed out with crown molding
- Brick chimney wall with woodburning fireplace on raised hearth and wood mantel shelf
- Custom built-in bookcase with base cabinets
- Picture window with arched transom
- Three double windows with mini-blinds
- Atrium door to Deck







- Recessed lighting
- Ceiling fan

### LAUNDRY ROOM 7'1" X 6'4"

- Vinyl tile flooring
- White shaker style cabinets
- Laminate counter
- LG ThinQ washer and dryer (2021)
- Fluorescent light ceiling panel

### MUDROOM 19'4" X 9'0"

- Reclaimed hardwood flooring
- Rough-hewn beamed ceiling
- Beadboard wainscot
- Full-width step-down to bluestone foyer area with double exit doors with windows to covered Side Porch
- Shelved double closet
- Double coat closet
- Black metal 6-light chandelier
- Recessed lighting
- Access to Garage

### GARAGE

- Two-car
- Automatic door openers
- Two windows
- Exit door with window
- Wall mounted storage shelving and wall cabinets
- Fluorescent lighting

## SECOND LEVEL

### HALL

- Landing for staircase with wraparound banister overlook to Foyer
- Hardwood flooring
- Built-up crown molding
- Recessed lighting
- Linen closet

### PRIMARY SUITE

### PRIMARY BEDROOM 21'2" X 12'7"

- Double door entry
- Tray ceiling
- Wall-to-wall carpeting
- Two windows with mini-blinds
- Recessed lighting
- Ceiling fan
- Open flow to Sitting Room with columns

### SITING ROOM 15'6" X 14'3"

- Wall-to-wall carpeting
- Corner-position gas fireplace with Colonial mantel, marble surround and hearth
- Double window with mini-blinds
- Recessed light
- Double doors to custom fitted Dressing Room (19'6" X 7'8") including open clothes racks, open shelving, shoe shelving, tie racks and plate glass dressing mirror
- Double doors to Primary Bath

### PRIMARY BATH 15'6" X 11'4"

- Ceramic tile floor and shower stall
- Matching vanities each with granite top, Kohler undermount sink, plate glass mirror, overhead recessed lighting and mirrored medicine cabinet
- Jetted soaking tub on marble top platform with columns, recessed light and picture window with custom window treatment
- Shower stall with built-in bench, exhaust fan and glass door
- Water closet with exhaust fan
- Two skylights
- Linen closet

### BEDROOM 2 13'4" X 12'0"

- Wall-to-wall carpeting
- Two windows with plantation blinds
- Double closet

### BEDROOM 3 13'0" X 11'0"

- Wall-to-wall carpeting
- Two windows with mini-blinds
- Double closet

### BEDROOM 4 15'6" X 12'0"

- Wall-to-wall carpeting
- Double window with plantation blinds
- Double closet
- Wall mounted TV

### HALL BATH

- Ceramic tile floor
- Vanity with quartzite top, undermount sink, plate glass mirror, overhead recessed lighting and mirrored medicine cabinet
- Tub/shower combination
- Exhaust fan

## LOWER LEVEL

### RECREATION ROOM 34'0" X 31'0" (IRREGULAR)

- Luxury vinyl flooring
- Atrium door to Patio and Yard
- Two transom windows
- Full-length built-in bookcase
- Recessed lighting
- Daikin wall mounted HVAC unit
- Utility closet with electric service panels and Verizon panel
- Under-stair storage closet
- Pool table
- Double doors to Exercise Room

### EXERCISE ROOM 19'0" X 11'6"

- Low-impact rubber flooring
- Full-width wall of base and wall cabinets with laminate counter
- Recessed lighting
- Frigidaire refrigerator
- Double doors to unfinished Utility/Storage Room with State propane gas-fired water heater

### BATH

- Dual access
- Luxury vinyl flooring
- Vanity with solid surface top and seamless sink
- Ceramic tile shower stall with ceiling mount rainshower, additional shower, built-in bench and glass door
- Recessed lighting
- Exhaust fan

### UTILITY ROOM

- Dual access
- Unfinished
- Carrier HVAC unit with propane gas heat and humidifier
- Well water tank and conditioning system
- Sump pump
- Work bench and pegboard wall panels
- Wall mounted storage shelving
- Fluorescent lighting

## EXTERIOR

- Colonial style home with brick front and vinyl siding
- Asphalt shingle roof (new in 2020)
- Covered brick Front Porch with classic columns
- Covered bluestone Side Porch at Mudroom with post and beam detail-post and beam overhang continues along garages
- Screened Porch (22'9" X 13'6") with engineered wood decking, beadboard wainscot and ceiling, recessed lighting, outdoor speakers, ceiling fan and screened door to Deck
- Engineered wood Deck with vinyl railings, steps to Yard and access from Family Room
- Covered concrete Patio off Recreation Room with adjacent elevated patio with Hot Springs hot tub
- Large 2-bay Storage/Garden Shed with attached covered tractor bay
- Deep back Yard
- Professionally landscaped
- Two 500-gallon propane tanks owned by resident
- Invisible Fence
- Total 3.22 acres in close proximity to The Baltimore Country Club at Five Farms







*Hubble Bisbee*  
of Long & Foster Real Estate

**CHRISTIE'S**  
INTERNATIONAL REAL ESTATE

GREEN SPRING  
STATION  
410-321-1411

