

HubbleBisbee
of Long & Foster Real Estate

CHRISTIE'S
INTERNATIONAL REAL ESTATE



7456 FLAMEWOOD DRIVE

CLARKSVILLE

KAREN HUBBLE BISBEE

Associate Broker, GRI, ABR

Karen@HubbleBisbee.com

443-838-0438



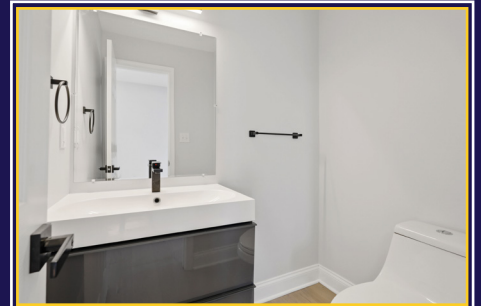
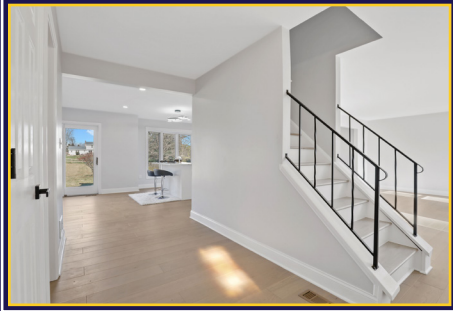
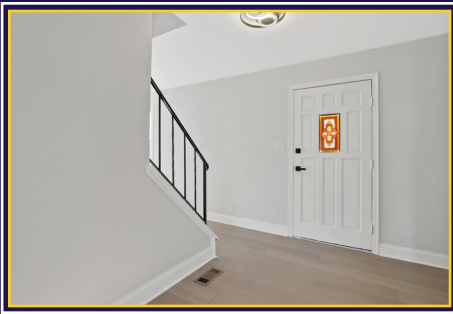
PETE DIMITRIADES

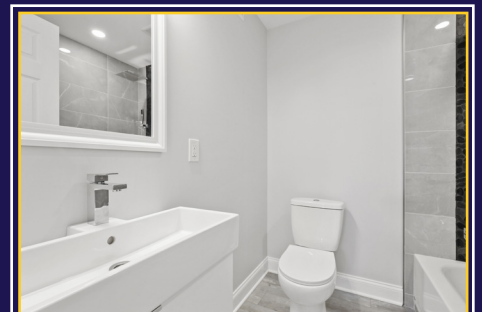
Realtor

Pete@HubbleBisbee.com

443-226-0651

WWW.HUBBLEBISBEE.COM





FOYER 13'4" X 10'0"

- Paneled entry door with leaded glass window
- Luxury vinyl flooring
- Open staircase with wrought iron railings and hardwood handrail
- Powder Room with luxury vinyl flooring, modern vanity, plate glass mirror with overhead lighting, Glacier Bay flush and exhaust fan
- Closet
- Modern ceiling light
- Passage to Garage
- Open flow to Kitchen
- Open flow to Living Room

LIVING ROOM 18'6" X 13'0"

- Luxury vinyl flooring
- Two windows
- Wide portal to Dining Room

DINING ROOM 12'0" X 11'0"

- Luxury vinyl flooring
- Double window
- Built-up crown molding
- Linear chandelier with glass globes
- Access to Kitchen

KITCHEN 14'0" X 11'4"

- Luxury vinyl flooring
- Shaker style white wood cabinets including island/breakfast bar, ceiling-height wall cabinets, lazy-Susan base cabinet, tray cabinet and dovetailed drawers
- Marble finish quartz counters
- Glass-tile backsplashes
- LG stainless steel French door refrigerator
- LG stainless steel electric range
- LG stainless steel built-in microwave
- LG stainless steel dishwasher
- Stainless steel undermount sink with disposal
- Bowed bay window
- Recessed lighting
- Modern ceiling light above island
- Staircase to Lower Level
- Open flow to Family Room

FAMILY ROOM 23'0" X 12'0"

- Luxury vinyl flooring
- Brick chimney with wood burning fireplace on raised hearth, wood mantel shelf and glass doors
- Sliding glass doors to Yard
- Window
- Recessed lighting

GARAGE

- Two-car
- Automatic door opener
- Two windows
- Exit door with window

SECOND FLOOR

HALL

- Luxury vinyl flooring
- Modern ceiling light

PRIMARY BEDROOM

16'2" X 11'4"

- Luxury vinyl flooring
- Three windows
- Double closet
- Passage to Primary Bath with walk-in closet

PRIMARY BATH

- Porcelain tile floor and shower stall with river-rock borders and vertical accent
- Modern vanity with quartz top, ceramic sink, plate glass mirror and modern overhead lighting
- Shower stall with additional handheld shower, recessed light and glass by-pass doors
- Glacier Bay flush
- Exhaust fan

BEDROOM 2 13'5" X 10'0"

- Luxury vinyl flooring
- Two windows
- Double closet

BEDROOM 3 11'0" X 10'0"

- Luxury vinyl flooring
- Window
- Closet

BEDROOM 4 11'10" X 10'0"

- Luxury vinyl flooring
- Two windows
- Double closet

HALL BATH

- Porcelain tile floor and shower stall with river-rock borders and vertical accent
- Modern vanity with quartz top, ceramic sink, plate glass mirror and modern overhead lighting
- Tub/shower combination with additional handheld shower and recessed light
- Glacier Bay flush
- Exhaust fan

LOWER LEVEL

RECREATION ROOM

23'0" X 20'0"

- Luxury vinyl flooring
- Laundry room with recessed light and Whirlpool Duet washer and dryer
- Three windows
- Two closets- 1 with well water tank
- Recessed lighting

BATH

- Luxury vinyl flooring
- Modern vanity with framed mirror and modern overhead lighting
- Tub/shower combination with porcelain tile surround and river-rock vertical accent, additional handheld shower and recessed light
- Glacier Bay flush
- Exhaust fan

UTILITY ROOM

- Unfinished
- Trane electric HVAC unit
- AO Smith electric water heater

EXTERIOR

- Brick with vinyl siding
- Asphalt shingle roof
- Two-story covered front porch
- Deep flat back yard
- Total .98 acre lot in great Clarksville Fulton area close to shopping, restaurants and the Johns Hopkins Applied Physics Lab

