

Hubble Bisbee

of Long & Foster Real Estate

CHRISTIE'S
INTERNATIONAL REAL ESTATE



15740 DOVER ROAD
UPPERCO

KAREN HUBBLE BISBEE

Associate Broker, GRI, ABR

Karen@HubbleBisbee.com

443-838-0438



NANCY C. HUBBLE

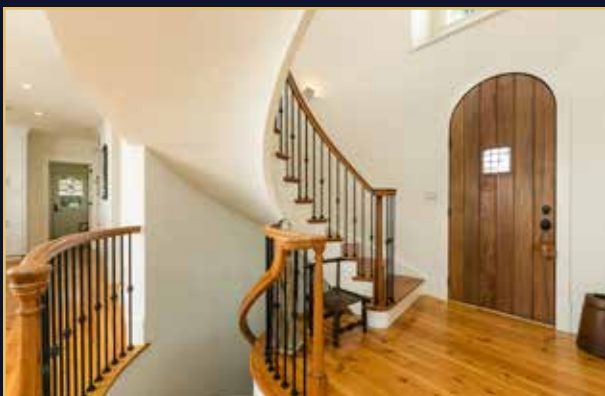
Associate Broker, GRI, CRS, ABR

Nancy@HubbleBisbee.com

443-465-1424

WWW.HUBBLEBISBEEGROUP.COM

Christie's International Real Estate









FOYER 11'6" X 10'8"

- Arched solid mahogany entry door w/ window w/ exterior metal grate
- Two-story
- Reclaimed wide plank pine flooring
- Open pine semi-circular staircases to 2nd Floor & Lower Level w/ pine handrails & rubbed bronze spindles
- Rubbed bronze & crystal chandelier
- Triple window above entry door
- Flows to Kitchen
- Step-down through wide portal to Great Room

GREAT ROOM 25'6" X 20'0"

- Vaulted ceiling w/ pine beams
- Reclaimed wide plank pine flooring
- Cast stone wood burning fireplace on raised hearth
- Bowed bay window, picture window & 2 additional arched windows
- Two triple windows in dormer skylights
- Two glazed doors flanking fireplace to Deck & Pool area
- Recessed lighting

- Built-in ceiling speakers

KITCHEN 29'4" X 14'2"

- Reclaimed wide plank pine flooring
- Baldwin Mill Cabinetry custom solid wood recess-panel cabinetry including island/ breakfast bar, pantry cabinet, glass-door cabinets, pull-out trays, appliance garages, pot-pan drawers, pull-out trash/recycle bins, bookcases, TV/computer niche, soft-close dovetailed drawers & matching crown
- Marble counters & backsplashes
- Butcher block breakfast bar
- Thermador stainless steel built-in refrigerator
- Thermador 5-burner induction cooktop
- Suspended Thermador stainless steel range hood w/ lighting
- Thermador stainless steel thermal convection oven
- Miele stainless steel built-in microwave oven
- Thermador stainless steel dishwasher
- Lacava stainless steel undermount sink w/ basin rack & gooseneck faucet
- Additional stainless steel undermount sink w/ basin rack & gooseneck faucet

- Dining area w/ 2 sets of French doors to Deck
- Double window
- Recessed lighting
- Under-cabinet lighting
- Built-in ceiling speakers
- Passage to Master Bedroom w/ custom fitted double closet & access to Powder Room
- Glazed door to Laundry/Mudroom

LAUNDRY/MUDROOM 12'2" X 10'1"

- Limestone floor
- White recess-panel base & wall cabinets
- Butcher block counters
- Whirlpool Duet washer & dryer
- Double window
- Crown molding
- Closet
- Recessed lighting
- Exit door to Breezeway w/ 12-pane window

POWDER ROOM

- Granite floor & wainscot
- Modern pedestal sink w/ adjustable wall mounted mirror & wall sconce lighting



- Crown molding
- Built-in ceiling speaker
- Exhaust fan

MASTER BEDROOM 17'0" X 15'0"

- Reclaimed wide plank pine flooring
- Triple window set in recess
- Crown molding
- Recessed lighting

MASTER BATH

- Granite floor & shower stall
- Traditional wood double vanity w/ marble top, undermount sinks, 2 oval wall mounted adjustable mirrors & modern wall sconce lighting
- Lacava oval free-standing soaking tub
- Open flow shower stall w/glass partition & additional hand-held shower
- Water closet
- Custom fitted walk-in closet
- Built-in open linen shelving
- Two windows
- Recessed lighting
- Built-in ceiling speakers

SECOND FLOOR

HALL

- Landing for staircase w/ curved banister overlook
- Radius walls
- Reclaimed wide plank pine flooring
- Seating area w/double window
- Crown molding
- Recessed lighting
- Wall sconce up-lighting

BEDROOM #217'0" X 12'3"

- Reclaimed wide plank pine flooring
- Leaded glass double window in recess
- Crown molding
- Crystal 6-light chandelier
- Private Bath

BATH

- Marble floor, wainscot & shower stall
- Modern vanity w/marble top & seamless sink, adjustable wall mounted mirror & wall sconce lighting

- Shower stall w/rainforest shower, additional hand-held shower, recessed light & glass door enclosure
- Exhaust fan

BEDROOM #317'0" X 12'0"

- Reclaimed wide plank pine flooring
- Double window
- Crown molding
- Custom fitted double closet
- Pendant light w/glass globe
- Sliding 'barn' door to private Bath

BATH

- Marble floor, wainscot & tub surround
- Modern vanity w/marble top & seamless sink, adjustable wall mounted mirror & wall sconce lighting
- Tub/shower combination w/rainforest shower, additional hand-held shower, recessed light & glass door enclosure
- Exhaust fan

LOWER LEVEL

HALL

- Open semi-circular staircase access
- Polished concrete floor
- Recessed lighting
- Under-stair storage closet
- Access to crawl space
- Access to Bath
- Flows to Recreation Room

RECREATION ROOM 25'5" X 14'0"

- Polished concrete floor
- Two sets of French doors to Patio
- Recessed lighting
- Built-in ceiling speakers

MEDIA ROOM 17'8" X 14'5"

- Polished concrete floor
- Sharp wall mounted TV
- Built-in surround sound
- Recessed lighting
- Access to Mechanical Room

OFFICE 12'0" X 11'9"

- Polished concrete floor
- Two walls of custom built-in cabinetry including base cabinets, bookcases, drawers, wall cabinets & storage cabinets
- Recessed lighting

BATH

- Polished concrete floor
- Modern pedestal sink w/mirrored medicine cabinet & wall sconce lighting
- Rainforest shower stall w/honed granite walls, rusticated granite back wall, recessed light & glass door enclosure
- Exhaust fan

MECHANICAL ROOM

- Heat pump HVAC for heat & central air conditioning
- Fresh air ventilation system

- Ultra-violet air purification system
- Two 80 gallon quick-fire water heaters
- Well water tank w/water treatment system
- Fire sprinkler system
- Stand-by generator panel, pre-wired for generator (no generator)

EXTERIOR

- White-wash brick & stucco w/ half-timber style trim
- Architectural asphalt shingle roof
- Bluestone walkway to recessed-arched main entry
- Bluestone garden path & fountain garden at steps to Breezeway
- Vaulted cedar post & beam Breezeway w/ bluestone paving & steps, stucco/brick knee-walls, cabled railings & 2 pendant lights- connects House & Garage
- Elevated 51-foot polished concrete deck seated on brick foundation w/stucco/brick posts, cabled railings, flows to small walled patio area at pool
- In-ground heated pool w/bluestone patio, stucco/brick garden walls & metal fencing
- Bluestone Patio (36 x 24) w/fire pit-access from Recreation Room
- Walled enclosure adjacent pool concealing pool filter equipment & heat pump pool heater
- Total 127.74 acres including lawns & professional landscaping surrounding house & remainder in leased farmed fields
- Spectacular vistas

GARAGE

- Attached to House by Breezeway
- Over-sized 2-car w/mahogany 'carriage house' doors
- Finished
- Automatic door openers
- Five windows
- Recessed lighting
- Open pine staircase to finished Loft w/ cherry landings & double window

- Plumbing rough-in for Kitchen or wet bar
- Under-stair storage closet

LOFT

- Reclaimed wide plank cherry flooring
- Two picture windows & 3 double windows
- Large double closet
- Recessed lighting
- Daikin wall mounted HVAC unit
- Samsung wall mounted TV
- Bath rough-in

ADDITIONAL FEATURES

- All electric w/high-efficiency heat pumps including pool heater
- Pre-wired including electric panel for standby generator
- Entire House & Garage foam insulated
- All wood flooring reclaimed material
- Security system including fire alarm & sprinkler system
- Pre-wired for cctv & smart home controls
- Bowers & Wilken home theater
- Home audio system by Gramophone
- Gramophone installed wifi throughout most of property





HubbleBisbee

OF LONG & FOSTER REAL ESTATE

CHRISTIE'S
INTERNATIONAL REAL ESTATE

GREENSPRING VALLEY OFFICE
410-847-3852 (MANAGER)

