

Hubble & Bisbee
of Long & Foster Real Estate

CHRISTIE'S
INTERNATIONAL REAL ESTATE



700 LEISTER DRIVE

CHAPEL GATE / MAYS CHAPEL

KAREN HUBBLE BISBEE

Associate Broker, GRI, ABR
Karen@HubbleBisbee.com
443-838-0438

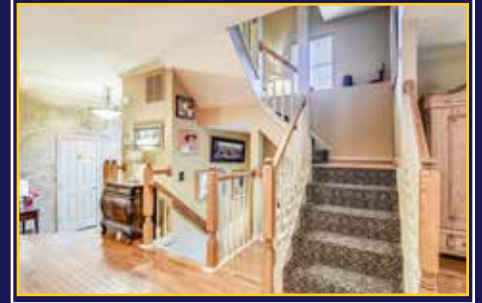


NANCY C. HUBBLE

Associate Broker, ABR, CRS, GRI,
Nancy@HubbleBisbee.com
443-465-1424

WWW.HUBBLEBISBEE.COM





FOYER

- Paneled entry door e/transom & sidelights
- Hardwood flooring
- Powder Room w/hardwood flooring, vanity, framed mirror, overhead wall sconce lighting, window w/plantation shutters & exhaust fan
- Crown molding
- Closet
- Bronze finish pendant light w/glass-disc shade
- Step-up to Living Room, Dining Room & Kitchen

LIVING ROOM 21' X 14'

- Hardwood flooring
- Gas fireplace w/Colonial mantel, marble surround & hearth
- Bay window w/plantation blinds
- Double window w/plantations blinds & drapery treatment
- Atrium door to Deck w/plantation blinds & drapery treatment
- Crown molding
- Recessed lighting
- Open flow to Dining Room

DINING ROOM 15' X 8'

- Hardwood flooring
- Crown molding
- Chair rail
- Open carpeted staircases to lower & upper levels w/hardwood handrails
- Chandelier excluded

KITCHEN 16' X 12'

- Hardwood flooring
- White raised-panel cabinetry including lazy-Susan base cabinet & roll out trays
- Granite counters
- Tumbled marble backsplashes
- Whirlpool side-by-side refrigerator w/water-ice dispenser
- Frigidaire stainless steel 5-burner gas range
- Kenmore built-in microwave
- Frigidaire stainless steel dishwasher
- Undermount double sink w/Insinkerator disposer
- Breakfast area at double window w/plantation blinds & valence
- Crown molding
- Pantry closet
- Bronze finish ceiling light w/pitted glass shade
- Two bronze finish wall sconce lights w/glass shades
- Under-cabinet lighting

SECOND FLOOR

HALL

- Hardwood flooring
- Landing for staircase w/window on mid-landing w/plantation blinds- open staircase continues to 3rd floor

- Laundry closet w/GE washer & Maytag dryer, white wall cabinets & recessed light
- Closet
- Cut glass ceiling lights

MASTER BEDROOM 14' X 12'

- Vaulted ceiling
- Hardwood flooring
- Double window w/plantation blinds & drapery treatment
- Large walk-in closet
- Track lighting
- Ceiling fan w/light
- Pocket door to Master Bath

MASTER BATH

- Vaulted ceiling w/skylight
- Ceramic tile floor, tub platform & shower stall
- Oak double vanity w/solid surface top & seamless sinks, plate glass mirror, overhead lighting & 2 mirrored medicine cabinets
- Soaking tub
- Glass-enclosed shower stall
- Window w/plantation blind & valence
- Recessed lighting
- Ceiling light w/pitted glass shade
- Exhaust fan

BEDROOM #2 11' X 10'

- Hardwood flooring
- Window w/plantation blind & valence
- Double closet
- Ceiling fan

BEDROOM #3 10' X 9'

- Hardwood flooring
- Window w/plantation blind & valence
- Closet
- Track lighting

HALL BATH

- Ceramic tile floor & tub surround
- Oak vanity w/solid surface top & seamless sink, plate glass mirror, overhead lighting & mirrored medicine cabinet
- Tub/shower combination
- Exhaust fan

THIRD FLOOR

LOFT 21' X 14'

- Landing for open staircase w/arched window on mid-landing w/plantation blind & swag valence
- Wall-to-wall carpeting
- Palladian window w/pleated shades & valence treatments, built-in window seat bench w/custom cushion
- Two skylights w/pleated shades
- Double closet
- Recessed lighting
- Brass pendant light above staircase w/curved glass panels
- Ceiling fan
- Vizio wall mounted TV

LOWER LEVEL

FAMILY ROOM 21' X 12'

- Landing for staircase w/window on mid-landing w/plantation blind
- Laminate wood-pattern flooring
- Double window w/plantation blinds
- Crown molding
- Shelved closet
- Under-stair storage areas
- Track lighting
- Recessed lighting
- Electric service panel

BEDROOM #4 15' X 12'

- Wall-to-wall carpeting
- Two transom windows w/pleated shade
- Built-in wall mounted bookcase
- Walk-in closet
- Recessed lighting

BATH

- Vinyl flooring
- Oak vanity w/solid surface top & seamless sink, plate glass mirror & overhead lighting
- Tub/shower combination w/ceramic tile surround
- Exhaust fan

UTILITY/STORAGE ROOM

- Unfinished
- York HVAC unit w/gas heat
- Whirlpool gas-fired water heater
- Storage shelving
- GE side-by-side refrigerator

EXTERIOR

- End-of-group Chapel Gate townhome
- Brick w/vinyl siding
- Asphalt shingle roof- 2016
- Full-width wood deck w/Chinese Chippendale railings, built-in bench seating & gated steps to yard
- Great Mays Chapel location convenient to I-83, Downtown, Greenspring Station, Hunt Valley, shopping & restaurants

