

Hubble & Bisbee
of Long & Foster Real Estate

CHRISTIE'S
INTERNATIONAL REAL ESTATE



10607 CANDLEWICK ROAD

GREENSPRING VALLEY

KAREN HUBBLE BISBEE

Associate Broker, GRI, ABR
Karen@HubbleBisbee.com
443-838-0438

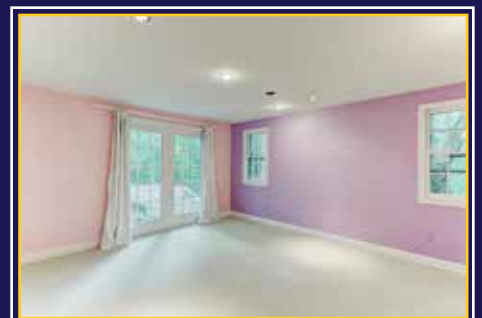


JEREMY A. BATOFF, ESQ.

Associate Broker
JeremyBatoff@HubbleBisbee.com
443-520-7586

WWW.HUBBLEBISBEE.COM





FOYER 24'1" X 7'1"

- Glazed entry door w/sidelights
- Hardwood flooring
- Open oak staircase w/hardwood handrails
- Glazed exit door w/sidelights to Patio
- Recessed lighting
- Cut crystal ceiling lights
- Staircase to Basement
- Three wide cased portals to Dining Room
- Two cased portals to Living Room

LIVING ROOM 24'0" X 13'7"

- Hardwood flooring
- Wood paneled chimney wall w/fireplace, wood stove insert, colonial mantel, brick surround & hearth
- Two sets of built-in bookcases w/base cabinets flanking fireplace
- Four sets of built-in full length mirror-backed display cases w/glass shelves
- French doors to Patio
- Two windows
- Crown molding
- Recessed lighting
- Double doors to Family Room

FAMILY ROOM 25'0" X 16'0"

- Hardwood flooring
- Beaded wood paneled walls
- Beamed ceiling paneled w/beaded board
- Full width stone chimney wall w/oversized wood burning fireplace on raised bluestone hearth w/2 wood bins beneath hearth
- Two sets of atrium doors to Deck
- Two double windows w/floor length plantation shutters
- Floor length built-in bookcase
- Track lighting
- Powder Room w/porcelain tile floor, pedestal sink, framed mirror w/overhead lighting, Glacier Bay flush & exhaust fan

DINING ROOM 24'1" X 13'8"

- Hardwood flooring
- Custom built-in china cabinetry including base cabinets, drawers & upper cabinets
- Atrium door w/full-size sidelights to Patio
- Window
- Recessed lighting
- Two wall sconce lights
- Step-up to Side Foyer
- French doors to open passage to Kitchen w/double window w/transoms & step-up to Side Foyer

SIDE FOYER 12'0" X 7'8"

- Ceramic tile floor
- French doors from front Deck
- Floor length stationary window
- Recessed lighting
- Step-down to Kitchen

KITCHEN 35'6" X 20'8"

- Wide plank hardwood flooring
- Eleven-foot ceiling height
- Oak raised-panel cabinetry including island/breakfast bar, glass-door cabinets, lazy-Susan base cabinet, roll-out trays, wine rack, custom hood enclosure, raised workstation & matching crown trim
- Quartz counters w/granite on island
- Ceramic tile backsplashes
- LG Studio stainless steel French door refrigerator w/water-ice dispenser
- LG Studio 5-burner gas cooktop w/range hood vent & lighting
- Two LG Studio stainless steel under-counter ovens
- LG stainless steel dishwasher
- Stainless steel undermount sink
- Large breakfast area w/wraparound floor length window wall including atrium door to Covered Porch

- Fireplace w/stove insert, colonial mantel, ceramic tile surround & hearth
- Two sets of ceiling height storage cabinets flanking fireplace
- Built-in bookcases
- Two additional windows
- Powder Room w/pedestal sink, framed mirror, pendant light, Glacier Bay flush & exhaust fan
- Recessed lighting
- Under-cabinet lighting
- Above cabinet ambient lighting
- Seven-light chandelier above island
- Ceiling fan
- Passage w/steps to Master Bedroom
- Passage to Laundry Room w/closet & pantry closet

LAUNDRY ROOM 13'0" X 6'1"

- Ceramic tile floor
- Utility sink
- Wall mounted shelving
- Under-stair storage area
- Fluorescent lighting
- Samsung washer & dryer
- Access to Garage

GARAGE

- Two-car
- Finished
- Automatic door openers
- Double window

MASTER BEDROOM 19'3" X 15'8"

- Wall-to-wall carpeting
- Floor length bay window
- Floor length built-in bookcase
- Double closet
- Recessed lighting
- Ceiling fan
- Built-in ceiling speakers
- Staircase w/window to Bonus Room
- Passage to Master Bath w/double pocket doors to large walk-in closet

MASTER BATH 23'6" X 19'9"

- Marble floor, tub platform & steps
- Two vanities each w/marble top, plate glass mirror & overhead wall sconce lighting
- Jacuzzi jetted soaking tub w/plate glass mirrors & wall sconce lighting
- Porcelain tile shower stall w/built-in bench & wall niches, recessed light & glass doors
- Water closet w/Glacier Bay flush
- Step-down to seating area w/laminate floor, Amerec sauna & wraparound floor length window wall
- Built-in full length linen shelving
- Recessed lighting
- Exhaust fans

BONUS ROOM 21-8" X 20'0"

- Carpeted staircase access from Master Bedroom w/tread lighting
- Vaulted ceiling w/2 dormer skylights
- Wall-to-wall carpeting
- Banister overlooks to staircase
- Additional alcove w/arched window
- Additional window
- Large closet
- Plate glass mirror wall panel
- Two large pendant lights
- Two wall sconce up-lights
- Two ceiling fans

SECOND LEVEL

HALL

- Hardwood flooring
- Open oak staircase access from Foyer
- Seating area (14' X 11') w/dormer window & 2 skylights
- Walk-in closet
- Linen closet
- Knee-wall storage
- Floor length built-in bookcase

- Whole-house fan
- Ceiling mount lighting
- Passage to Bedroom 3 & 4 w/double closet

BEDROOM #2 19'9" X 13'7"

- Wall-to-wall carpeting
- Dormer window & additional window w/plantation blinds
- Closet
- Two knee wall storage areas
- Ceiling light

HALL BATH 1

- Hex-tile floor
- Ceramic tile wainscot
- Modern vanity w/open shelving, plate glass mirror & overhead lighting
- Ceramic tile shower stall w/ceiling light & glass doors
- Window
- Linen closet
- Recessed light

HALL BATH 2

- Ceramic tile floor & tub surround
- Double vanity w/solid surface top & undermount sinks, plate glass mirror & wall sconce lighting
- Tub/shower combination w/glass doors
- Kohler flush
- Window w/plantation blind
- Exhaust fan

BEDROOM #3 14'2" X 12'0"

- Vestibule entry
- Wall-to-wall carpeting
- Stationary French door windows
- Two additional windows
- Built-in bookcases
- Double closet
- Recessed lighting
- Two wall sconce lights w/shades

BEDROOM #4 10'11" X 9'10"

- Wall-to-wall carpeting
- Window
- Closet

BASEMENT

- Unfinished
- Carrier HVAC w/oil heat
- Bock oil-fired water heater
- Oil storage tank
- Well water tank & conditioner
- Electric service panels
- Standby generator switches
- Home media panels
- Double utility sink

EXTERIOR

- Seamlessly expanded Cape Cod home
- Wood siding & shingle siding
- Asphalt shingle roof
- Bluestone walkway w/access to front Deck & flagstone walkway to main entry
- Partially covered engineered wood front Deck w/French doors to Side Foyer
- Bluestone 35-foot Patio across back w/flanking wooden Decks- access from Living Room, Family Room & Dining Room
- Covered Porch at Kitchen & Master Bath w/classic columns
- Bluestone walkway from Patio & Decks to Pool area
- Heated in-ground pool w/concrete/bluestone pool decking & Patios
- Adjacent Cabana w/snack bar & bath/ changing room
- Geodesic dome greenhouse
- Garden shed

