

Hubble & Bisbee
of Long & Foster Real Estate

CHRISTIE'S
INTERNATIONAL REAL ESTATE



16650 REMARE ROAD
MONKTON



16650 REMARE ROAD

Located on over four acres of tremendous countryside, 16650 Remare Road features an incredible custom built Southern Low Country style home designed by Peter Ratcliffe and built by C.E. Wheeler homebuilders. A brick walkway leads up to a deep covered front Veranda overlooking sweeping manicured lawns.

A custom arched mahogany entry opens into the Foyer area and flows directly into the Great Room with custom built-ins flanking a brick fireplace accented by a coffered ceiling. This space also includes a spacious Dining Area and French doors leading out to a large back covered porch. A wide portal opens into the custom gourmet Kitchen by Kenwood Kitchens with Woodmode cabinetry, granite counters, a walnut breakfast bar, stainless professional grade appliances, walk-in pantry and a large breakfast area. The adjoining Hearth Room features hand-scraped cherry hardwood floors, shiplap paneled walls, a stone gas fireplace, custom bookcases, triple window and an atrium door to the covered porch. A back hall with custom built desk, storage bench seating and fitted closets includes a Powder Room, door to the covered side porch and access to the Laundry Room and attached two-car Garage. An exit door from the Garage opens to a breezeway connecting the two-car detached Garage.

A hallway from the Great Room leads to the sumptuous first floor Master Bedroom Suite. A vestibule from the hallway includes a Powder Room and a glazed door opens into the

MONKTON

Home Office with sliding doors to the patio. Double doors open into the spacious Master Bedroom awash in natural light from a large picture window. This resort-like space includes two custom-fitted walk-in closets and an attached Master Bath with matching chest vanities, soaking tub and marble dual shower stall with a glass enclosure.

A large sitting hall at the top of the main staircase enjoys large custom built-in bookcases and two dormer windows with knee-wall storage. Three large Bedrooms, each with a private Bath, and a long covered porch with mahogany deck overlooking the large backyard with seasonal views of the Gunpowder River share the second level.

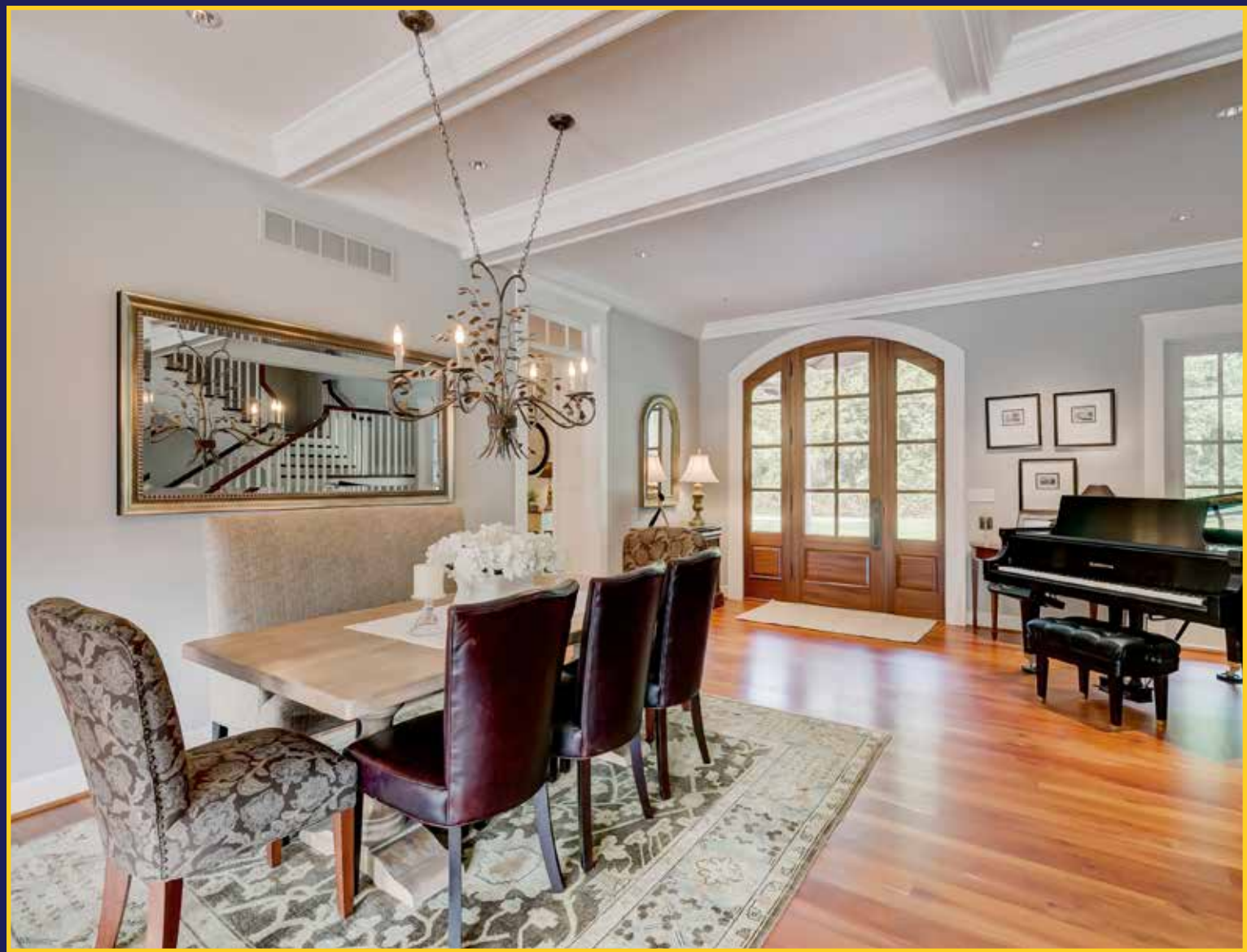
The lower level features an expansive Recreation Room with a brick fireplace on a raised stone hearth, a cherry wet bar and access to Bedroom #5 and a full Bath. Double doors open to the adjacent Game Room. State-of-the-art systems throughout the home include geothermal HVAC, home audio and custom lighting.

A covered brick back veranda with classic columns leads down to the large heated pool and patio with a nearby half bath/changing room. A gorgeous yard accentuated by professional landscaping frames the pool and flows down to wooded groves fronting the banks of the scenic Gunpowder River. Abundant natural beauty bursts in all directions throughout the property, perfectly accenting this exceptionally built and maintained luxury home.



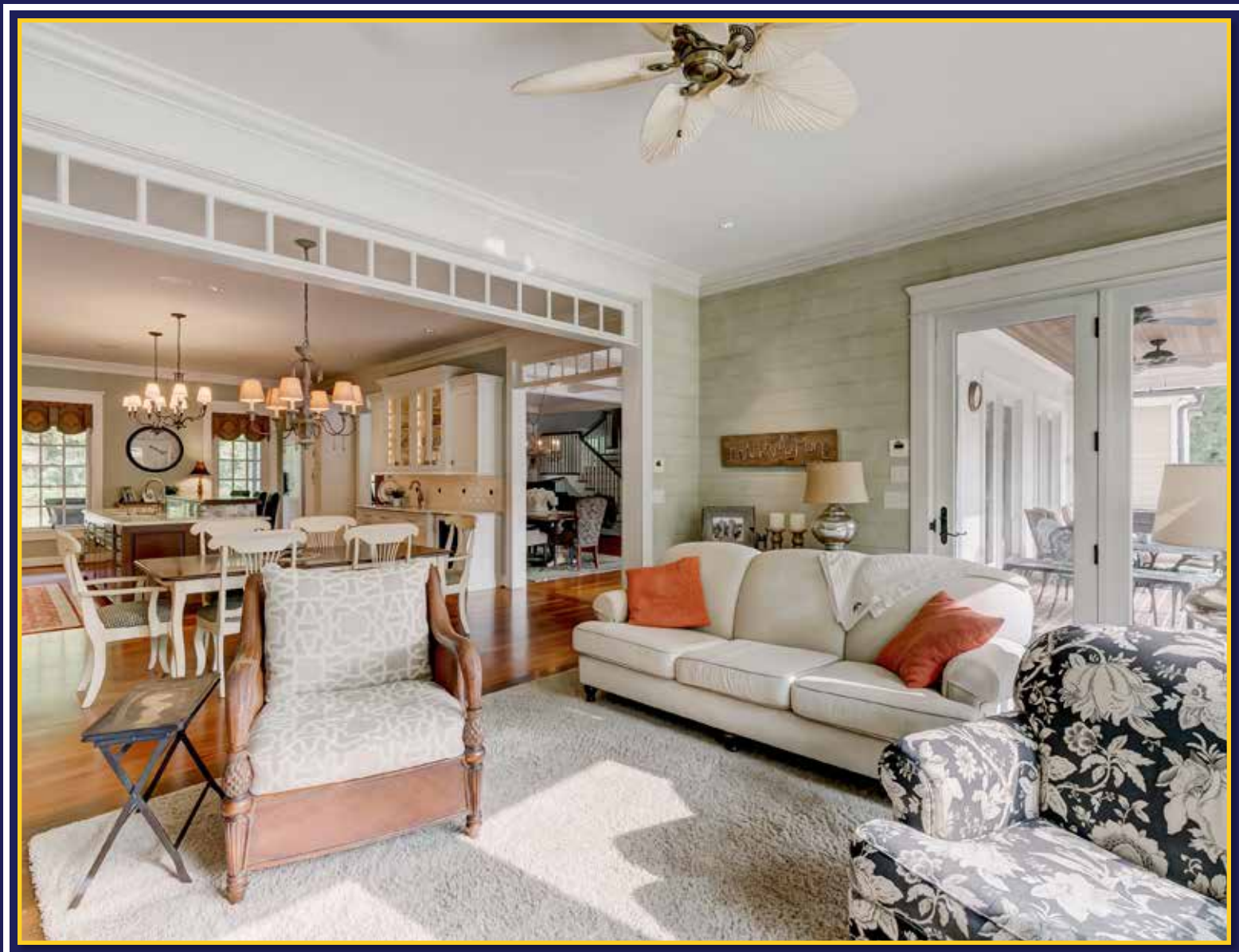




























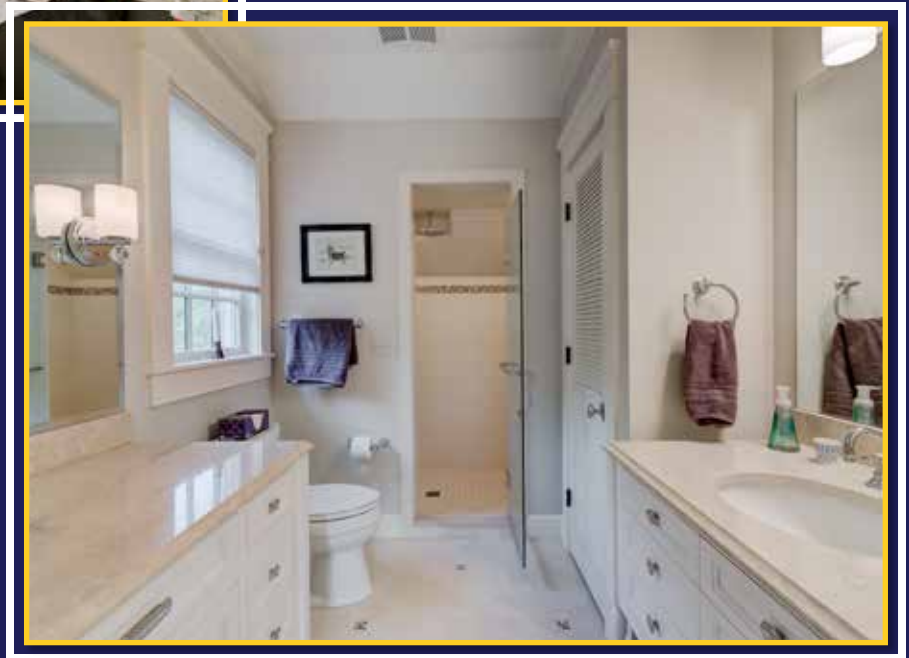








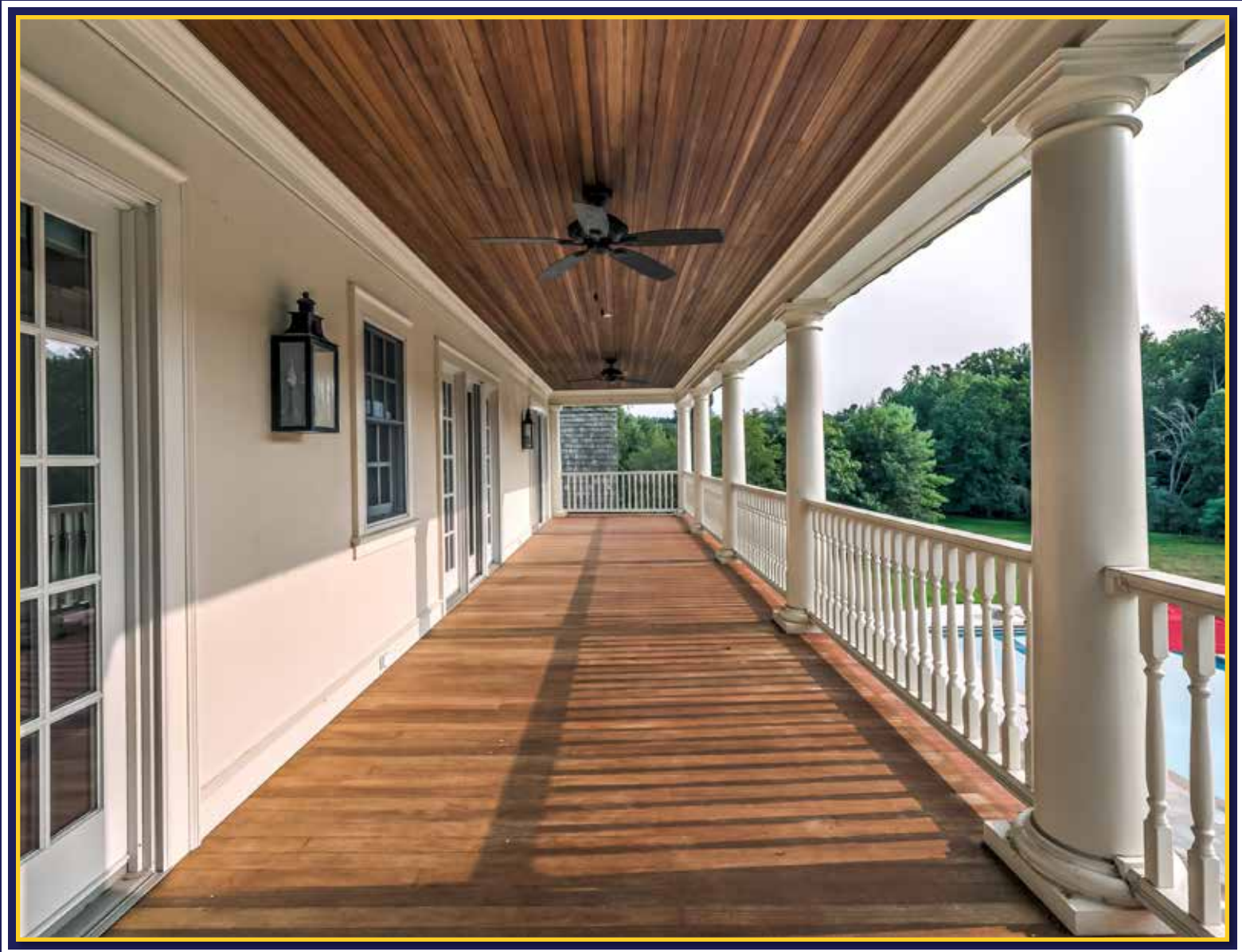




































FEATURES

MAIN LEVEL

GREAT ROOM 33'0" X 28'6"

- Custom oversized arched mahogany entry door w/matching sidelights and beveled glass
- Cherry flooring
- Entry/foyer area w/stationary floor length window & staircases
- Open cherry staircases to upper & lower levels w/hardwood handrails & painted spindles
- Family Room & Dining Area w/coffered ceiling
- Built-up crown molding including in coffered ceiling
- Brick gas fireplace w/wood mantel shelf, over-mantel panel & custom glass doors
- Custom built-in bookcases flanking fireplace w/beadboard backwalls & base cabinets
- French doors to Covered Porch & 2 additional sets of matching stationary windows - all with woven shades
- Metal 6-light chandelier in Dining Area
- Oversized hanging lantern in staircase
- Recessed lighting
- Built-in ceiling speakers
- Tall cased portal to Master Bedroom Hall
- Wide & tall cased portal w/transom & additional portal w/transom to kitchen

KITCHEN 28'9" X 18'0"

- Kenwood Kitchens design
- Cherry hardwood flooring
- WoodMode 'insert drawer/cabinet drawer' custom cabinetry in white finish including oversize cherry island/breakfast bar, pantry cabinets, glass door cabinets, wall cabinets w/illuminated upper glass door display, roll-

out trays, pot-pan drawers, pull-out trash/recycle bins, dovetailed soft-close drawers & matching crown

- Granite counters
- Walnut breakfast bar
- Subway tile backsplashes w/decorative panel at range
- GE Monogram side-by-side refrigerator w/matching front panels & water-ice dispenser
- GE Monogram stainless steel commercial grade gas range w/griddle & stainless steel range hood w/lighting
- GE Monogram stainless steel wall oven, built-in microwave & warming drawer
- GE Monogram dishwasher w/matching front panel
- GE Monogram wine cooler
- Stainless steel undermount double sink w/disposal & Culligan filtered water dispenser
- Hammered stainless steel undermount prep sink
- Large breakfast w/6-light chandelier w/shades
- Two windows (1 stationary) w/custom valences
- Built-up crown molding
- Recessed lighting
- Under-cabinet lighting
- Two black metal 6-light chandeliers above island
- Built-in ceiling speakers
- Tall cased portal w/transom to Back Hall
- Access to Pantry w/custom frosted glass door
- Wide & tall cased portal w/transom

HEARTH ROOM 18'9" X 13'9"

- Hand-scraped cherry hardwood flooring
- Shiplap paneled walls in antique finish

- Stone gas fireplace w/reclaimed wood mantel shelf, beadboard over-mantel panel & custom glass doors
- Custom built-in cabinetry flanking fireplace including full length bookcase, bookcase w/base cabinet, TV niche, beadboard back walls & accent lighting
- Floor length triple window w/woven shades
- Atrium door to Covered Porch
- Built-up crown molding
- Recessed lighting
- Built-in ceiling speakers
- Rattan-paddle ceiling fan

WALK-IN PANTRY 11'1" X 7'4"

- Cherry hardwood flooring
- Custom built-in pantry shelving
- Commercial stainless steel sink unit w/counters & disposal
- Two windows w/pleated shades
- Pendant light above sink
- Ceiling light
- Frigidaire stainless steel refrigerator

BACK HALL 23'0" X 7'0"

- Cherry hardwood flooring
- Beadboard wainscot
- Custom built-in desk w/upper cabinets, bookcase, mail cubbies, cherry top & under-cabinet lighting
- Two custom fitted closets w/auto-lights
- Built-in seating/storage bench w/custom cushion
- Glazed entry door w/sidelight from Covered Side Porch
- Powder Room w/cherry hardwood flooring, chest vanity w/marble top & undermount sink, Kohler elongated comfort height flush,

- wall sconce lighting w/shades, window w/pleated shade, crown molding & exhaust fan
- Built-up crown molding
- Recessed lighting
- Pendant light
- Access to Garage
- Pocket door to Laundry Room

LAUNDRY ROOM 9'7" X 6'5"

- Slate finish ceramic tile floor
- Base & wall cabinets w/open shelving
- Solid surface counter w/sink
- Whirlpool Cabrio washer & dryer
- Two windows w/pleated shades
- Built-up crown molding
- Recessed light
- Two ceiling lights

ATTACHED GARAGE 31'0" X 26'0"

- Oversized
- Finished
- Two-car w/9' insulated garage doors
- Automatic door openers
- Storage/workshop area
- Window
- Exit door to breezeway to Detached Garage
- Access to Pool Half-bath/Changing Room

MASTER BEDROOM HALL

- Access from Great Room
- Cherry hardwood flooring
- Built-up crown molding
- Recessed lighting
- Vestibule to Powder Room w/closet
- Glazed door w/sidelight to Home Office

POWDER ROOM

- Cherry hardwood flooring
- Chest vanity w/glazed top & seamless sink
- Kohler elongated comfort height flush
- Window w/pleated shade
- Crown molding

- Wall sconce lighting w/shades
- Exhaust fan

HOME OFFICE 16'1" X 15'6"

- Cherry hardwood flooring
- Sliding doors w/full size sidelights & vertical shades to Patio
- Built-up crown molding
- Recessed lighting
- Built-in ceiling speakers
- Ceiling fan
- Additional access from Master Bedroom

MASTER BEDROOM 21'0" X 17'0"

- Double doors to private hall entry w/access to Study & custom fitted walk-in closet (8'4" X 7'7") w/wall-to-wall carpeting, crown molding & window w/pleated shade
- Walnut hardwood flooring
- Tray ceiling w/built-up crown molding
- Large picture window & 2 additional windows w/plantation blinds
- Second custom fitted walk-in closet (14'3" X 6'3") w/wall-to-wall carpeting, crown molding & window w/pleated shade
- Recessed lighting
- Built-in ceiling speakers
- Ceiling fan

MASTER BATH 17'6" X 14'2"

- Formal symmetrical layout
- Walnut hardwood flooring
- Matching chest vanities each w/upper cabinets, marble top, undermount sink, plate glass mirror & overhead wall sconce lighting
- Paneled tub platform w/marble top & Kohler aerator soaking tub
- Marble dual shower stall w/ceiling light, exhaust fan & glass door enclosure
- Two water closets each w/Kohler elongated comfort height flush & exhaust fan

- Picture window at tub & additional window w/pleated shades
- Built-up crown molding
- Recessed lighting
- Wall sconce lighting w/shades
- Built-in ceiling speakers

SECOND FLOOR

SITTING HALL 39'0" X 10'9"

- Landing for staircase w/wraparound banister overlook & dormer window skylight
- Cherry hardwood flooring
- Custom built-in bookcases w/base cabinets & TV niche
- Two dormer windows each w/access to knee-wall attic storage
- Built-up crown molding
- Linen closet
- Recessed lighting
- Built-in ceiling speakers
- Vestibule to Bedroom 3 w/wall sconce lighting w/shades

BEDROOM #2 16'2" X 13'7"

- Wall-to-wall carpeting
- Glazed door to Porch w/full size sidelights, pleated shades & drapery treatment
- Built-up crown molding
- Built-in ceiling speakers
- Ceiling fan
- Private Bath

BATH

- Stone finish ceramic tile floor
- Wide vanity w/granite top, Kohler undermount sink, framed mirror & wall sconce lighting
- Large subway tiled shower stall w/ceiling light & glass door
- Kohler elongated comfort height flush

- Linen closet
- Window w/pleated shade
- Recessed light
- Exhaust fan
- Large wraparound walk-in closet w/wall-to-wall carpeting, window w/pleated shade & access to large unfinished attic storage area w/2 windows

BEDROOM #3 14'2" X 13'6"

- Wall-to-wall carpeting
- Glazed door to Porch w/full size sidelights, pleated shades
- Built-up crown molding
- Walk-in closet
- Built-in ceiling speakers
- Ceiling fan
- Private Bath

BATH

- Stone finish ceramic tile floor
- Chest vanity w/marble top, framed mirror & overhead lighting
- Tub/shower combination w/ceramic tile surround w/glass tile/stone border
- Kohler elongated comfort height flush
- Window w/pleated shade
- Built-up crown molding
- Recessed light
- Exhaust fan

BEDROOM #4 16'0" X 13'7"

- Wall-to-wall carpeting
- Glazed door to Porch w/full size sidelights, pleated shades
- Built-up crown molding
- Large walk-in closet w/access to attic storage area w/window
- Built-in ceiling speakers
- Ceiling fan
- Pull-down attic stairs

- Private Bath

BATH

- Stone finish ceramic tile floor w/glass tile accents
- Chest vanity w/marble top, Kohler undermount sink, plate glass mirror & overhead lighting
- Matching base cabinet w/marble top, plate glass mirror & wall sconce lighting
- Subway tiled shower stall w/glass tile borders, built-in bench, rainshower head & additional shower, recessed light & glass door
- Kohler elongated comfort height flush
- Window w/pleated shade
- Built-up crown molding
- Linen closet
- Exhaust fan

COVERED PORCH 47'0" X 10'0"

- Mahogany decking
- Classic columns w/vinyl railings
- Red fir beadboard ceiling
- Two ceiling fans
- Recessed lighting & wall mount lighting
- Access from all 3 Bedrooms
- Overlooks Pool & Back Yard w/seasonal vistas of the Gunpowder River

LOWER LEVEL

HALL 20'0" X 16'0"

- Landing for open cherry staircase from Great Room
- Wall-to-wall carpeting
- Crown molding
- Recessed lighting

RECREATION ROOM 32'4" X 20'6"

- Wall-to-wall carpeting
- Brick gas fireplace on raised stone hearth w/rough hewn mantel shelf & custom glass

doors

- Cherry wet bar w/base cabinets, upper cabinets, solid surface top, stainless steel undermount sink, Maytag stainless steel beverage cooler & GE microwave
- Glazed door w/full size sidelights to yard
- Recessed lighting
- Drum pendant light
- Utility closet w/Water Furnace Envision geothermal HVAC unit w/Aprilaire humidifier
- Access to Bedroom 5 & Bath

BEDROOM #5 16'8" X 14'5"

- Wall-to-wall carpeting
- Double window w/pleated shade
- Built-up crown molding
- Double closet
- Recessed lighting
- Access to Bath

BATH

- Dual access
- Stone finish ceramic tile floor & shower stall
- Chest vanity w/marble top, Kohler undermount sink, plate glass mirror & overhead lighting
- Full width shower stall w/recessed light & glass door enclosure
- Kohler elongated comfort height flush
- Crown molding
- Exhaust fan

GAME ROOM 23'5" X 14'7"

- Double door entry
- Wall-to-wall carpeting
- Crown molding
- Recessed lighting

UTILITY/STORAGE ROOM

- Unfinished

- ICF foundation wall insulation- throughout lower level
- Water Furnace Envision geothermal HVAC unit w/Aprilaire humidifier
- Bradford White propane gas-fired water heater
- Well water supply system including conditioner & water pressure control
- Electric service panels- 600 amp total
- Cummins Onan standby generator transfer switch & panel
- Whole house audio controls
- Home media panels
- Sump pump

EXTERIOR

- Custom built Southern Low Country style home designed by Peter Ratcliffe
- Built by C E Wheeler homebuilders
- Hardieplank siding w/Flemish bond brick foundation walls & chimneys
- Cedar shake roof & copper roofing
- Copper gutters & downspouts
- Functioning shutters
- Brick walkway & steps to brick covered front Veranda (64' X 10') w/classic columns, barrel-vaulted entry, mahogany main entry door, red fir beadboard ceiling, crown molding & recessed lighting
- Covered brick Side Porch w/classic columns, red fir beadboard ceiling, crown molding & recessed light
- Covered brick back Veranda (29' X 10') w/classic columns, red fir beadboard ceiling, built-in ceiling speakers, recessed lighting, ceiling fans, brick steps to Pool area, access from Great Room & Hearth Room, flows to uncovered brick Patio
- Elevated brick Patio (16' X 11') w/access from Study & brick steps to Pool area
- Second level Covered Porch above back

- Veranda
- Heated in-ground Pool (50' X 20') w/9' deep-end
- Travertine pool decking & Patios
- Pool Half-Bath/Changing Room- dual access from Garage & Pool area w/marble floor, beadboard wainscot, pedestal sink, Kohler elongated comfort height flush & window w/pleated shade
- Fenced back yard
- Cummins Onan 50Kw propane-powered standby generator
- Professionally landscaped & partially wooded 4-plus acres bordered by the Gunpowder River

DETACHED GARAGE

- Construction matching the house
- Connected to Attached Garage by brick colonnade breezeway w/classic columns
- Two-car w/9' insulated garage doors
- Automatic door openers
- Additional workshop/storage area
- Four windows
- Double doors to lawn
- Ceiling access panel to Loft

ADDITIONAL FEATURES

- Andersen 400 windows & doors
- Finished-in-place cherry & walnut flooring
- Interior doors 8' high
- Baldwin door hardware
- Main level ceilings 10' high
- Second level & lower level ceilings 9' high
- Covered brick porches w/stucco walls- main level
- Geothermal HVAC system- 3 zones
- Electric service panels total 600 amps
- Window candle lighting
- Foam insulated ceilings & exterior walls
- Main level Master Suite

- Walk-out lower level
- Five Bedrooms, 5 Baths & 3 Half-baths including Pool Half-bath
- Open concept main level living areas
- Home Office w/seasonal view of Gunpowder River
- Three fireplaces w/gas logs
- Travertine pool decking & patios always maintains cool temperature
- ICF foundation insulation





SHB



Hometrack ©2020
410-248-2941

Hubble Bisbee

of Long & Foster Real Estate

CHRISTIE'S
INTERNATIONAL REAL ESTATE

GREEN SPRING STATION

2330 W. Joppa Road, Suite 104
Lutherville, MD 21093
410-321-1411



KAREN HUBBLE BISBEE

Associate Broker, GRI, ABR

Karen@HubbleBisbee.com

443-838-0438

WWW.HUBBLEBISBEE.COM

Green Spring Station | 410-321-1411