

*Hubble
Bisbee*

CHRISTIE'S
INTERNATIONAL REAL ESTATE



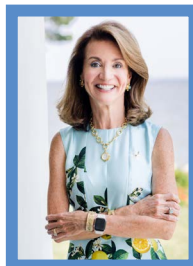
CAVES VALLEY GOLF CLUB
3125 BLENDON ROAD



LOCATIONS

2330 W Joppa Road, Suite 104
Lutherville, MD 21093

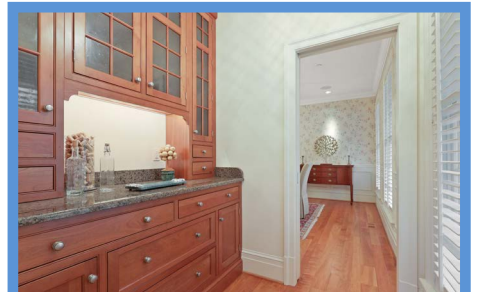
181 Harry S Truman Pkwy Ste 200
Annapolis, MD 21401

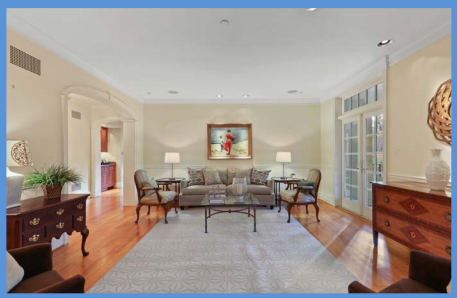
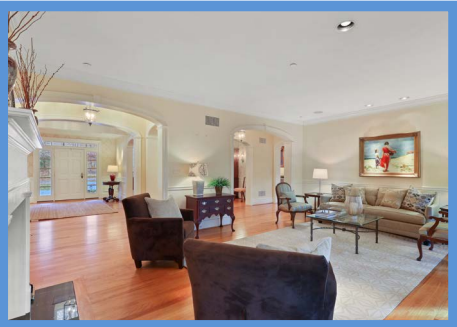


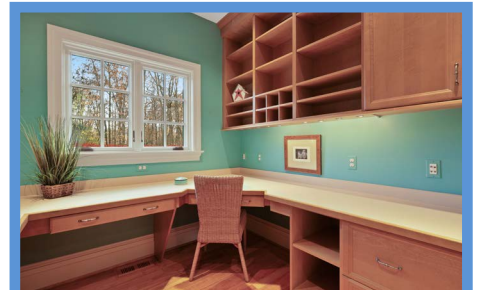
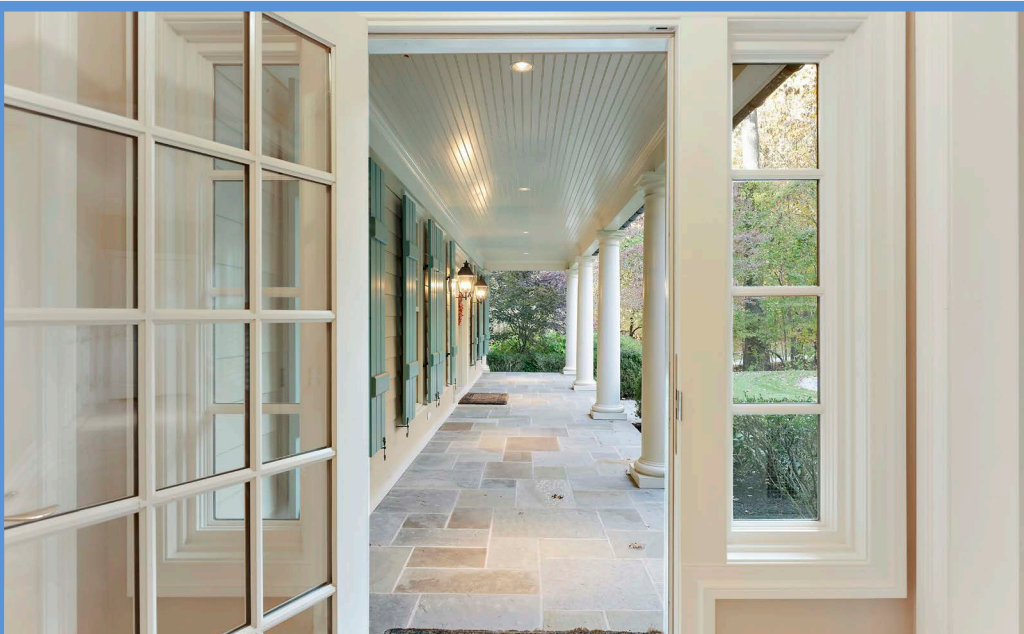
KAREN HUBBLE BISBEE

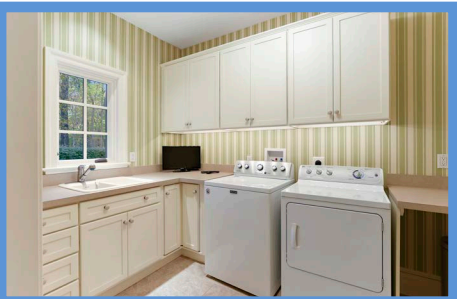
Principal, Associate Broker, ABR, GRI
Karen@HubbleBisbee.com
443-838-0438 (Mobile)
410-321-1411 (Office)

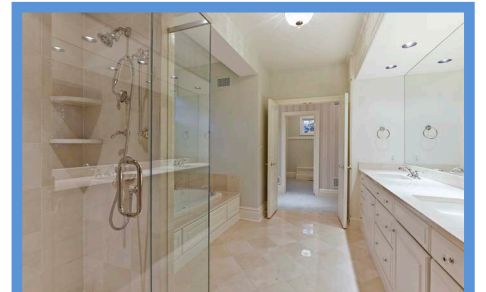
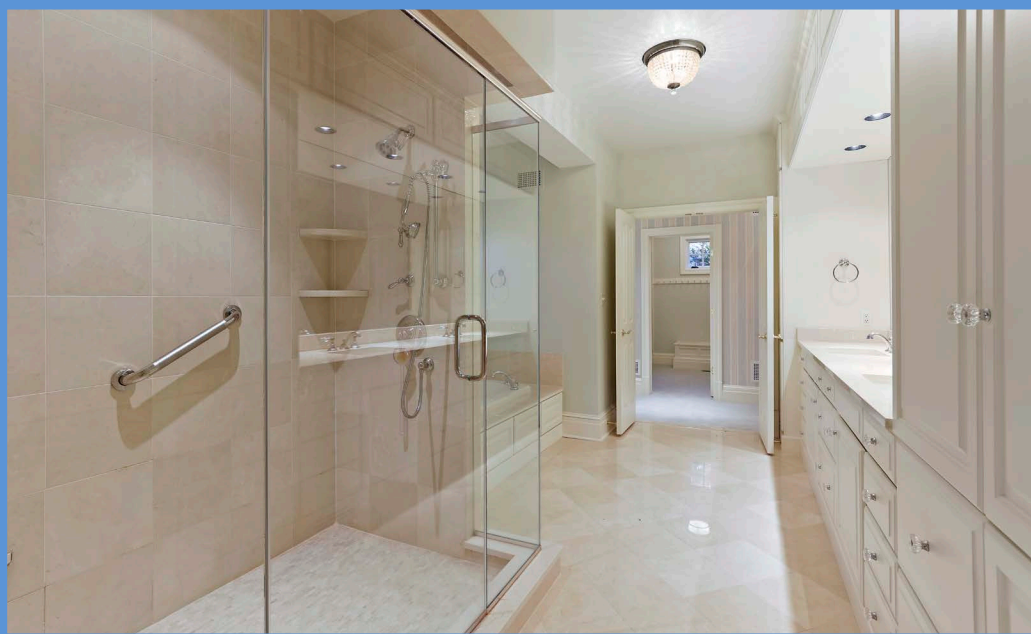
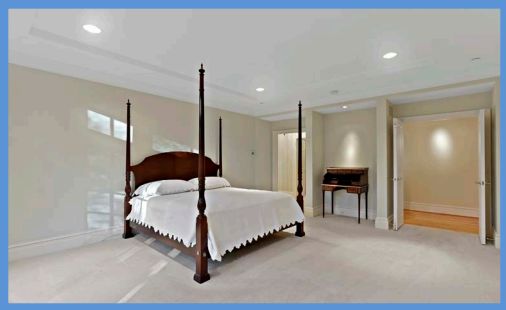
WWW.HUBBLEBISBEE.COM | (410) 321-1411 (OFFICE) | 

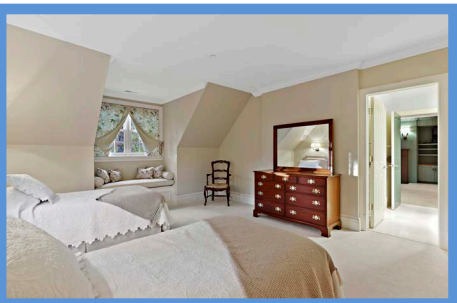
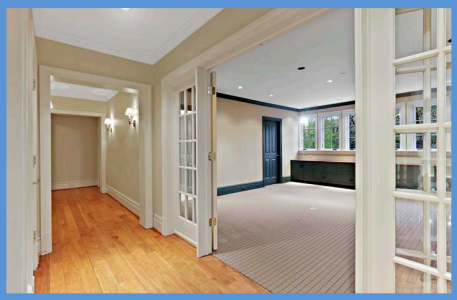
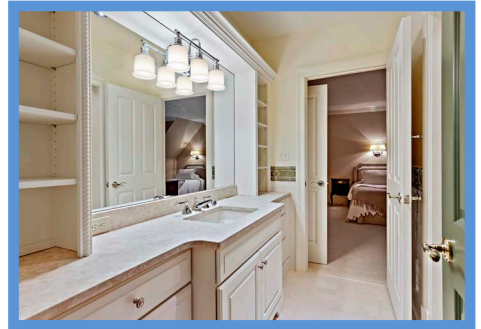
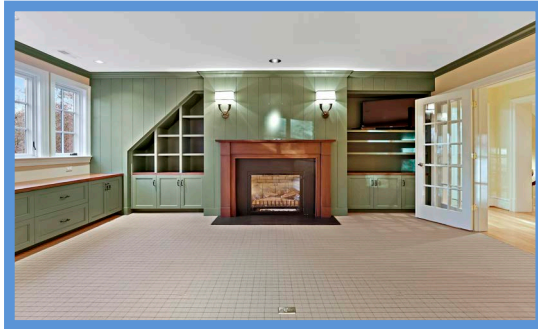
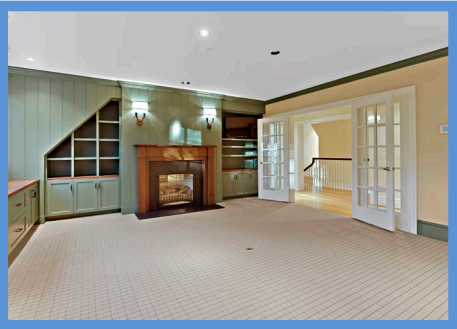


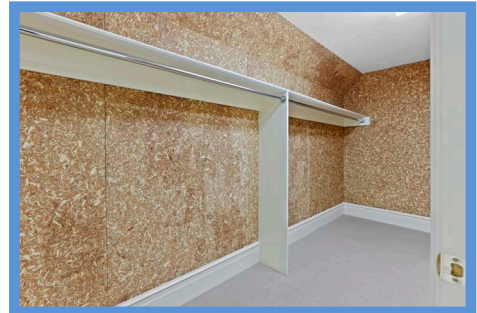
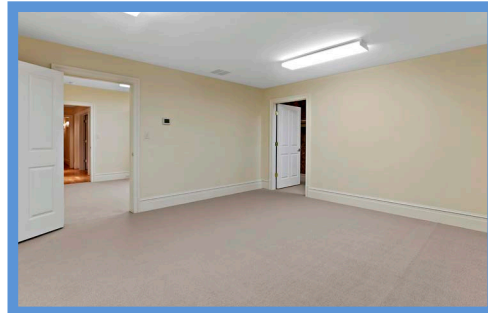
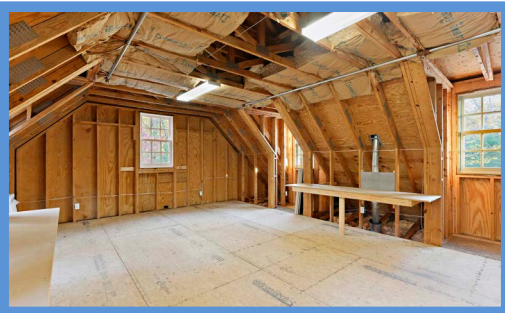
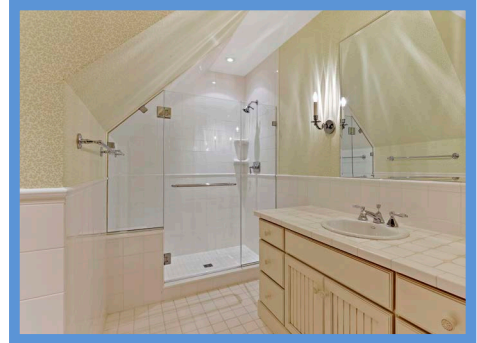












FOYER 16'10" X 10'5"

- Paneled entry door with transom and sidelights
- Birch hardwood flooring with inlaid mahogany borders
- Open classic staircases to upper and lower levels with hardwood handrails and painted spindles
- Two dormer skylights with arched windows and plantation shutters
- Large brass hanging lantern with glass panels
- Brass double wall sconce lighting with shades on staircases
- Recessed lighting
- Vestibule with double closet, window with plantation shutters and access to Powder Room
- Cased archway to Gallery Hall
- Cased archway to Dining Room

- Crown molding
- Two brass/crystal pendant lights
- Recessed lighting
- Illuminated display niche at Primary Suite
- Cased archways to Foyer, Dining Room and Family Room
- Access to Primary Suite
- Two cased archways to Living Room

DINING ROOM 16'10" X 13'4"

- Birch hardwood flooring
- Two windows with plantation shutters
- Built-up crown molding
- Chair rail with wainscot moldings
- Two mirror-back double wall sconce lights
- Recessed lighting
- Pocket door to Butler's Pantry
- Cased archway to Gallery Hall
- Chandelier excluded

LIVING ROOM 21'5" X 16'0"

- Birch hardwood flooring
- Gas fireplace with traditional wood mantel, marble surround and hearth
- Two illuminated built-in bookcases flanking fireplace with base cabinets and decorative arch detail
- Two sets of French doors with transoms and custom drapery treatments to Sunroom
- Built-up crown molding
- Chair rail
- Recessed lighting

SUNROOM 23'0" X 13'4"

- Bluestone floor with radiant heat
- Three walls of windows including double doors to Patio
- Beadboard ceiling
- Three skylights
- Crown molding
- Three wall sconce up-lights
- Two ceiling fans
- Glazed door to Family Room
- Built-in ceiling speakers
- Cable TV outlet

GALLERY HALL 32'0" X 5'2"

- In 3 sections- divided by cased archways
- Birch hardwood flooring with inlaid mahogany borders

FAMILY ROOM 25'5" X 14'5"

- Birch hardwood flooring
- Coffered ceiling trimmed with crown molding
- Stone chimney wall with wood burning fireplace on raised hearth, wood mantel shelf, glass doors and gas starter log lighter
- Built-in bookcases/entertainment center flanking fireplace
- Wet bar with cherry base cabinet and illuminated glass-door cabinets, granite top, copper undermount prep sink, under-counter refrigerator and under-cabinet lighting
- French doors with full-size sidelights and transoms to Patio
- Four-casement window with transoms
- Recessed lighting
- Built-in ceiling speakers
- Cased archway to Gallery Hall
- Open flow to Kitchen

KITCHEN 28'9" X 18'2"

- Birch hardwood flooring
- Cherry recess-panel custom cabinetry including island/breakfast bar, glass-door cabinets, appliance garage, basket produce bins, pot-pan drawers, lazy-Susan base cabinet, 2 tray cabinets, roll-out trays, TV cabinet, pull-out trash/recycle bins, bookcase, dovetailed drawers, soft-close drawers and matching crown trim
- Granite counters and windowsill
- Sub-Zero built-in refrigerator with

- matching front panels
- Sub-Zero built-in freezer with matching front panels
- Viking stainless steel cooktop with range hood and backsplash with warming racks
- Viking stainless steel double wall oven
- Viking stainless steel warming drawer
- GE stainless steel microwave
- Scotsman icemaker with matching front panel
- U-Line wine cooler
- Fisher Paykel 2-drawer dishwasher with matching front panels
- Stainless steel double sink with Insinkerator disposal and filtered hot/cold water dispenser
- Stainless steel undermount prep sink
- Walk-in pantry closet (7'4" X 5'8")
- Vaulted breakfast area with French doors with transom to Patio, 4-casement window with transoms and patinated metal 12-light chandelier
- Triple window with transoms at sink
- Crown molding
- Three pendant lights with shades above island
- Recessed lighting
- Under-cabinet lighting
- Built-in ceiling speakers
- Access to Back Hall
- Access to Butler's Pantry

BUTLER'S PANTRY 6'7" X 5'8"

- Birch hardwood flooring
- Cherry cabinetry matching Kitchen with base cabinets and glass-door cabinets
- Granite counter
- Window with plantation shutters
- Bras/cut-glass pendant light
- Access to Dining Room

POWDER ROOM

- Access from Foyer
- Birch hardwood flooring
- Pedestal sink
- Window with plantation shutters
- Built-up crown molding
- Patinated metal and ceramic pendant light
- Recessed lighting
- Exhaust fan

BACK HALL

- Access from Kitchen
- Mediterranean porcelain floor
- Glazed exit door with sidelights to Front Porch
- Two triple windows with lower sash plantation shutters
- Crown molding
- Brass pendant light with glass panels
- Recessed lighting
- Double closet and additional closet
- Access to Garage
- Passage with exit door, pocket door to Laundry Room, access to Powder Room 2 and staircase to floored storage attic with 5 windows and finish potential
- Access to Home Office

HOME OFFICE 9'0" X 8'5"

- Birch hardwood flooring
- Built-in wraparound base cabinets with 2 workstations and file drawers
- Matching wall cabinet, open shelving and mail cubbies
- Double window
- Recessed lighting and under-cabinet lighting

LAUNDRY ROOM 11'1" X 7'0"

- Mediterranean porcelain floor
- Recess-panel base, wall and storage cabinets
- Laminate counters
- Wall mounted shelf with clothes pole
- Kohler laundry sink
- Maytag washer and dryer
- Window
- Recessed light
- Frosted glass pendant light

POWDER ROOM 2

- Mediterranean porcelain floor
- Beadboard wainscot
- Pedestal sink with framed mirror and overhead lighting
- Crown molding
- Exhaust fan

GARAGE

- Finished 3-car
- Pea gravel epoxy floor finish
- Automatic door openers
- Four windows with lower sash plantation shutters
- Space-Ray infrared heater
- Wall cabinets
- Hot/cold water hose bib
- Double doors to Yard
- Staircase to Lower Level

PRIMARY SUITE

PRIMARY BEDROOM 19'10" X 16'0"

- Double door entry from Gallery Hall
- Tray ceiling
- Wall-to-wall carpeting
- French doors with full-size sidelights and transoms- to private Deck with built-in fire escape
- Crown molding
- Recessed lighting
- Drapery treatment excluded

DRESSING ROOM 20'0" X 5'2"

- Wall-to-wall carpeting
- Built-in dressing table with marble top, plate glass mirror and wall sconce lighting with shades
- Triple window with lower sash plantation shutters
- Crown molding
- Two large custom fitted walk-in closets, each with window and built-in seating/storage bench, 1 with safe
- Linen closet
- Recessed lighting
- Brass pendant light with cut crystal shade
- Double doors to Primary Bath

PRIMARY BATH 19'8" X 12'10"

- Marble floor with radiant heat
- Wide double vanity with marble top, Kohler undermount sinks, plate glass mirror and paneled bulkhead with recessed lighting
- Matching linen and storage cabinets with open shelving
- Bain Ultra heated aerator soaking tub in marble platform with handheld shower
- Marble shower stall with built-in bench, additional handheld shower, recessed light and glass door enclosure
- Pocket door to water closet with built-in seating/storage bench and window with custom valence
- Triple window at tub with lower sash plantation shutters and custom valence
- Recessed lighting
- Crystal ceiling light

- Exhaust fans

SECOND LEVEL

HALL

- Landing for staircase with banister overlook to Foyer
- Birch hardwood flooring
- Crown molding
- Recessed lighting
- Four wall sconce lights
- Linen closet

OFFICE/BEDROOM 4 18'4" X 16'0"

- Access through French doors with full-size sidelights
- Wall-to-wall carpeting
- Gas fireplace on paneled wall with Colonial mantel, slate surround and hearth
- Built-in bookcases with base cabinets flanking fireplace
- Full-width wall of built-in base cabinets with file drawers and hardwood top
- Six windows above base cabinets
- Crown molding
- Custom fitted walk-in storage closet
- Recessed lighting
- Two double wall sconce lights with shades
- Access to Shared Bath

BEDROOM 2 15'7" X 13'0"

- Wall-to-wall carpeting
- Two arched windows in dormer recesses with plantation shutters and built-in window seat/storage benches
- Crown molding
- Double closet and linen closet
- Recessed lighting
- Ceiling light
- Pocket door to private Bath

BATH

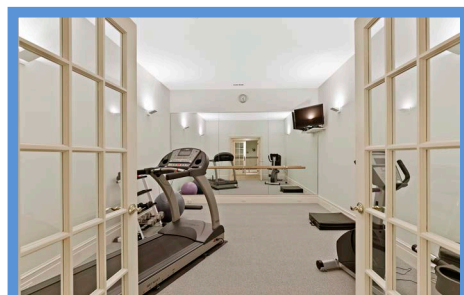
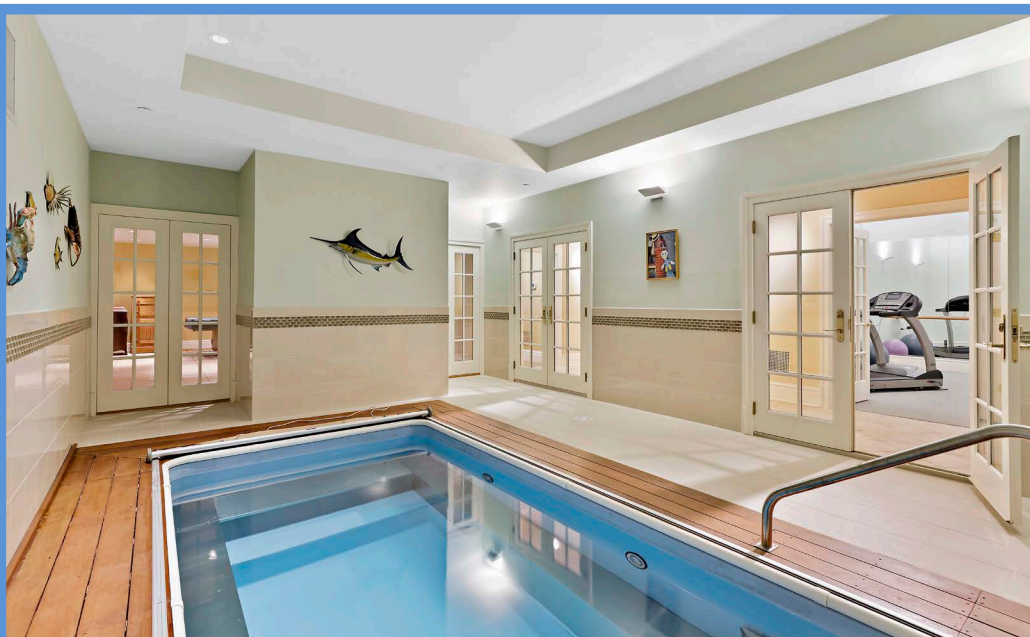
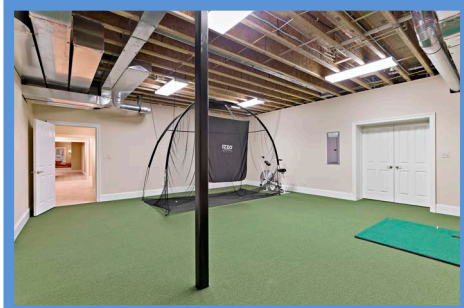
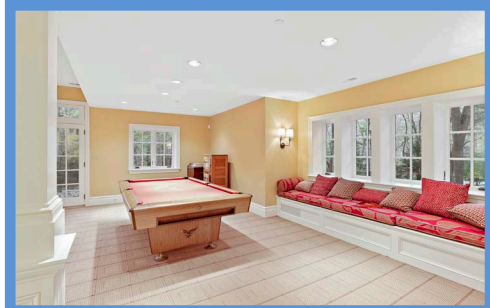
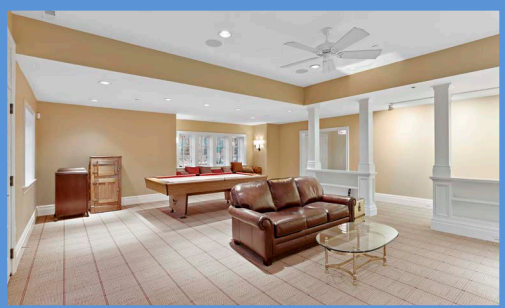
- Ceramic tile floor, wainscot and shower stall to ceiling
- Vanity with ceramic tile top, Kohler sink, plate glass mirror and wall sconce lighting
- Glass-enclosed shower stall with built-in bench
- Kohler flush
- Recessed lighting
- Exhaust fan

BEDROOM 3 15'10" X 14'1"

- Wall-to-wall carpeting
- Double window in dormer recess with custom window treatment and built-in window seat/storage bench with custom cushion
- Additional window with custom window treatment
- Crown molding
- Double closet
- Two double wall sconce lights with shades
- Access to Shared Bath

SHARED BATH

- Divided
- Marble floor
- Subway tile wainscot and tub surround with decorative borders
- Full-width vanity with marble top, Kohler undermount sink, open shelving, plate glass mirror and overhead lighting
- Tub/shower combination with glass doors
- Recessed lighting
- Ceiling light
- Exhaust fan



BONUS ROOM 1 20'4" X 11'7"

- Wall-to-wall carpeting
- Double window in dormer recess with built-in window seat/storage bench
- Built-in wardrobe cabinetry and open shelving
- Fluorescent light ceiling panels
- Pull-down attic stairs
- Access to Bonus Room 2

BONUS ROOM 2 16'0" X 15'0"

- Wall-to-wall carpeting
- Full-width walk-in cedar closet (15' X 5')
- Full bath rough-in
- Fluorescent light ceiling panels

LOWER LEVEL

HALL

- Mediterranean porcelain floor
- Open staircase from Foyer
- Track lighting
- Access to Changing Room/Bath
- Two sets of French doors to Indoor Pool
- French doors to Exercise Room
- Access to Game Room
- Access to Recreation Room

RECREATION ROOM 28'0" X 24'4"

- Wall-to-wall carpeting
- Gas fireplace on raised hearth with traditional wood surround, marble tile facing and hearth
- Two paneled knee-wall partitions with columns and built-in bookcases
- Four-casement window in recess with custom built-in window seat/storage bench with custom cushions
- Two sets of French doors with transoms to patio
- Double window
- Samsung wall mounted TV in framed recess above fireplace
- Pool table
- Recessed lighting
- Track lighting
- Two double wall sconce lights with shades
- Built-in surround sound
- Ceiling fan
- Two sets of stationary French doors to Indoor Pool
- Wide cased portal to Wet Bar

WET BAR 11'4" X 7'11"

- Ceramic tile floor
- Wood recess-panel base and wall cabinets
- Laminate counter
- U-Line under-counter refrigerator
- Stainless steel sink
- Art glass 'Coca-Cola' pendant light
- Double closet with whole-house audio controls
- Recessed lighting
- Under-cabinet lighting

INDOOR POOL 23'0" X 15'10"

- Access through 2 sets of French doors
- Ceramic tile floor with wood pool decking
- Ceramic tile wainscot with glass tile borders
- Endless resistance pool (14' X 7') with adjustable current and roller pool cover
- Two sets of stationary French doors to Recreation Room
- Wall sconce up-lighting
- Recessed lighting
- Built-in ceiling speakers

CHANGING ROOM/BATH

- Vestibule from Hall with pocket doors to Changing Room and Bath
- Ceramic tile floor throughout
- Changing Room with built-in bench and wall mounted clothes hooks

BATH

- Vanity with granite top, Kohler undermount sink, plate glass mirror and overhead lighting
- Full-width shower stall with ceramic tile walls and glass door enclosure
- Recessed lighting
- Exhaust fan

EXERCISE ROOM 16'1" X 12'6"

- Access through French doors
- Wall-to-wall carpeting
- Wall of plate glass mirrors
- Samsung wall mounted TV
- Wall sconce up-lighting
- Built-in ceiling speakers

GAME/GOLF PRACTICE ROOM

25'6" X 22'2"

- Artificial turf floor covering
- Fluorescent light ceiling panels
- Electric service panel
- Access to Utility Room
- Double doors to Workshop

WORKSHOP 18'6" X 14'0"

- Unfinished
- Low-impact flooring
- Two walls paneled in pegboard
- Transom window
- Work bench
- Base cabinets with wall cabinets above
- Utility sink
- Secured closet
- Fluorescent light ceiling panels
- Staircase to Garage
- Access to Wine Room

WINE ROOM 10'3" X 5'7"

- Climate controlled
- Stone finish ceramic tile floor
- Wooden wine racks
- Metal wine racks
- Decanting station with stemware racks
- Recessed lighting

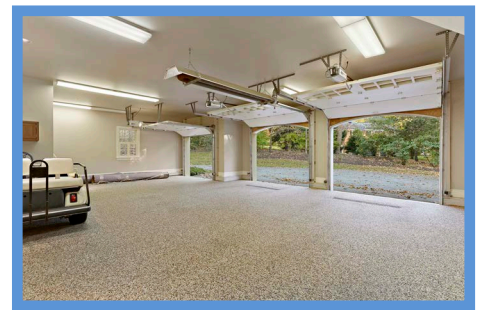
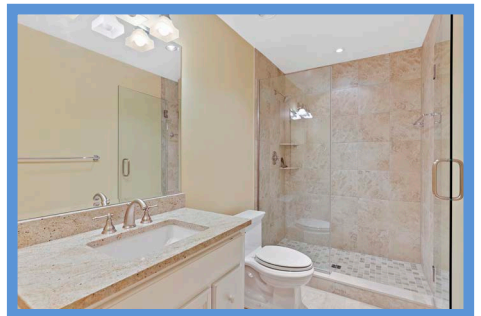
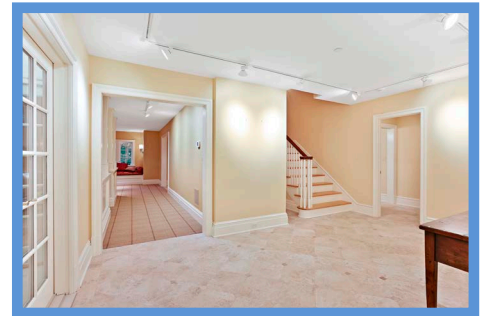
UTILITY ROOM

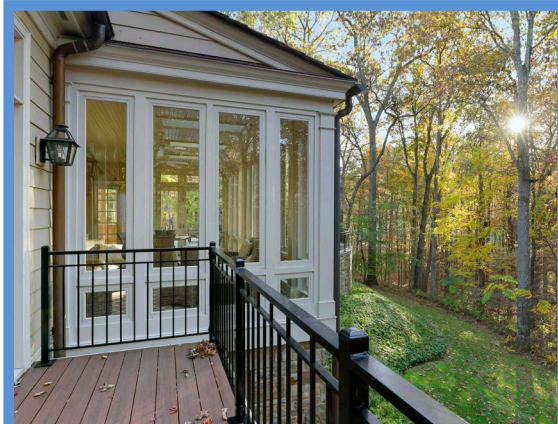
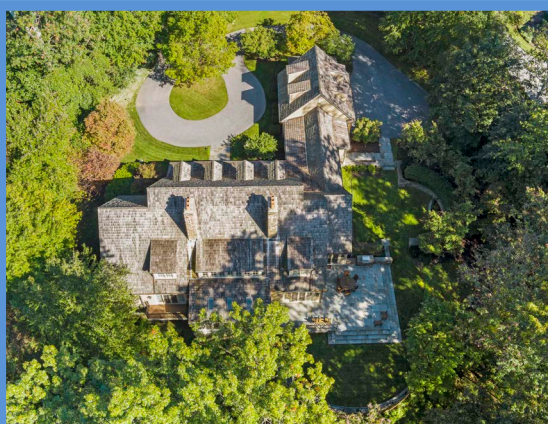
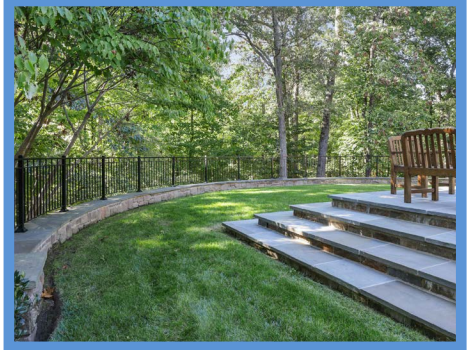
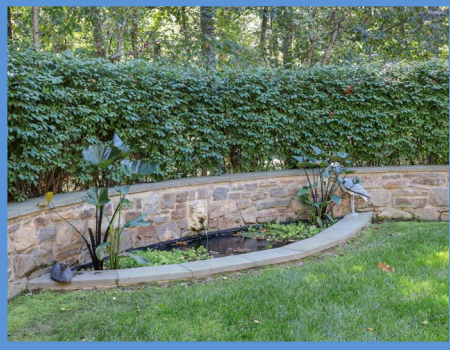
- Three Water Furnace Envision geo-thermal HVAC units
- Two Navien gas-fired tankless hot water supply units
- Well water system and conditioning system
- Water holding tanks for indoor fire sprinkler system
- Electric service panels
- Cummins Onan standby generator panel
- Home media panels

EXTERIOR

- Southern Living style custom built home
- Architectural design by Jeff Penza of Penza Bailey Architects
- Built by GYC Builders
- Hardiplank siding with stone foundation walls
- Cedar shake roof
- Copper gutters and downspouts
- Marvin windows
- Functioning wood shutters
- Cummins Onan standby generator
- Circular drive at main entry with bluestone walkway to Veranda

- Veranda with classic columns, bluestone floor, beadboard ceiling, recessed lighting, coach lamps flanking main entry and additional entry to Back Hall
- Wraparound bluestone Patio and steps to lawns with access from Sunroom and Family Room, stone cooking center with stainless steel natural gas grill and wrought-iron railing
- Stone garden walls with fountain and Koi pond
- Lawn at Patio with curved garden wall with wrought-iron railing
- Parking pad at Garage
- Professionally landscaped and maintained on 4.4 partially wooded acres
- Serenely nestled in the Residences of Caves Valley





*Hubble
Bisbee*

CHRISTIE'S
INTERNATIONAL REAL ESTATE

GREEN SPRING
STATION
410-321-1411



ANNAPOLIS
410-321-1833

