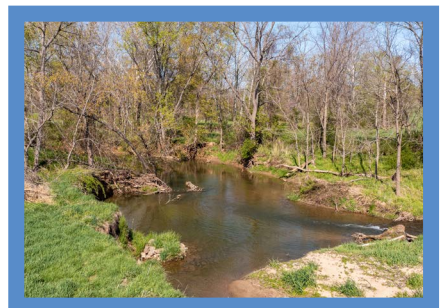


*Hubble  
Bisbee*

CHRISTIE'S  
INTERNATIONAL REAL ESTATE



14111 GREEN ROAD | GLYNDON  
GOOSE GREEN FARM



LOCATIONS

2330 W Joppa Road, Suite 104  
Lutherville, MD 21093

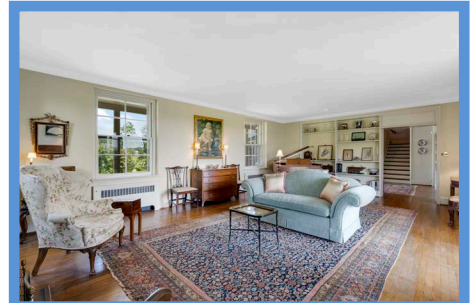
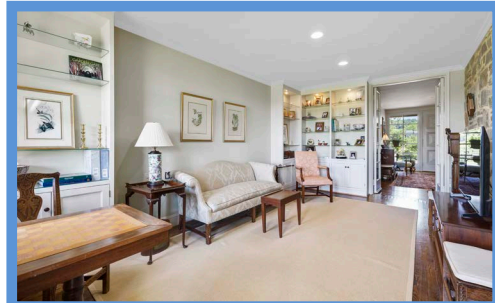
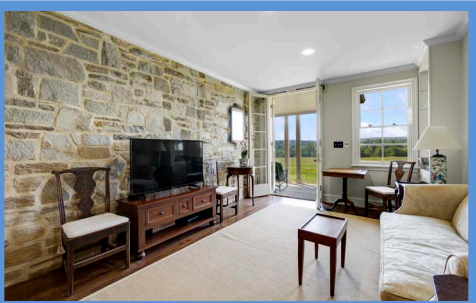
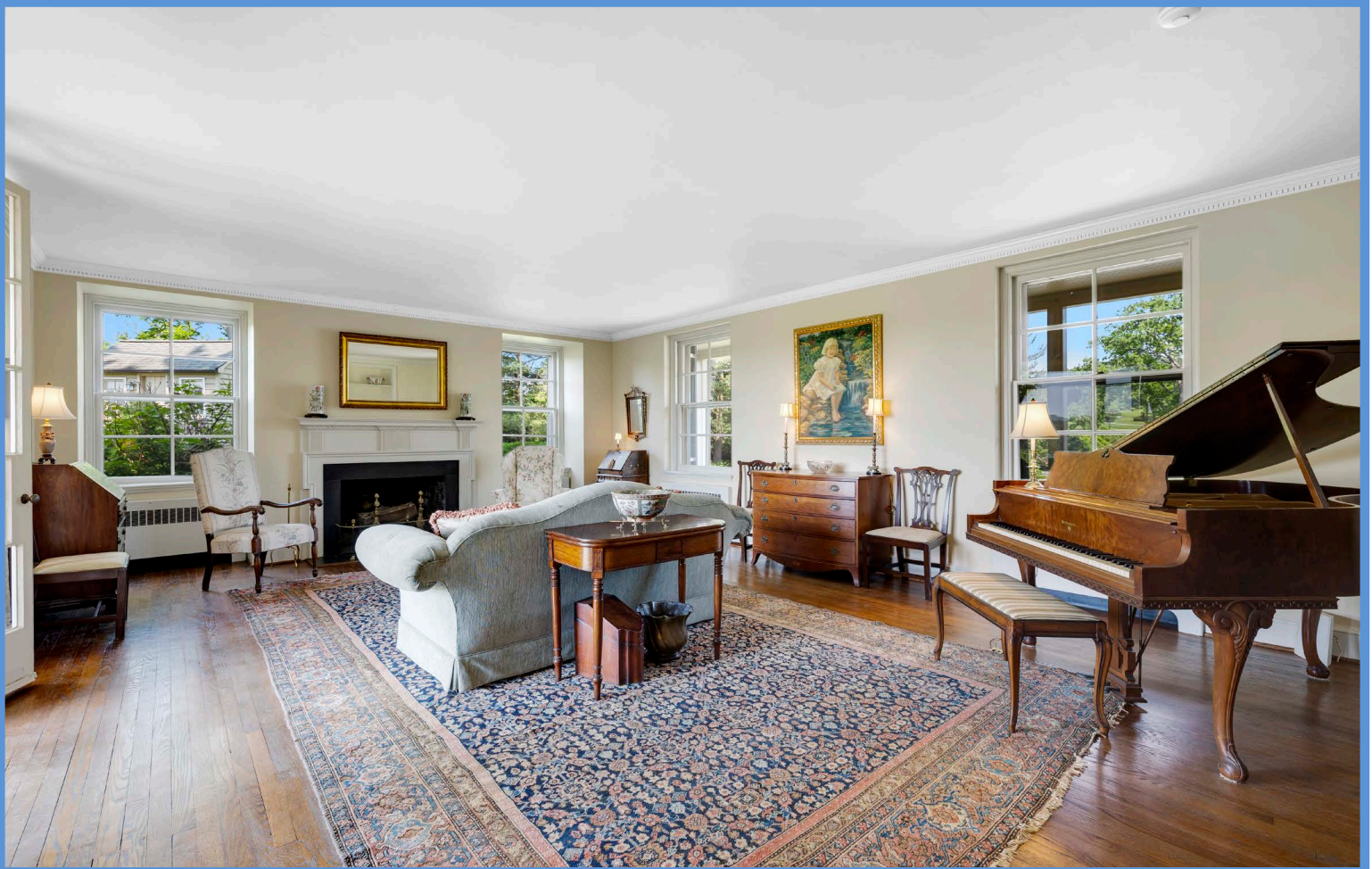
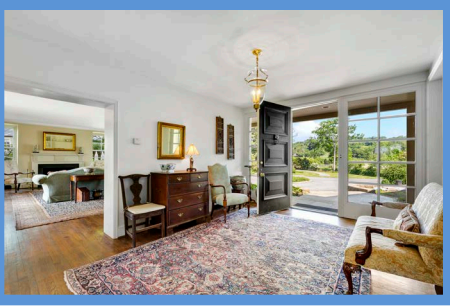
181 Harry S Truman Pkwy Ste 200  
Annapolis, MD 21401



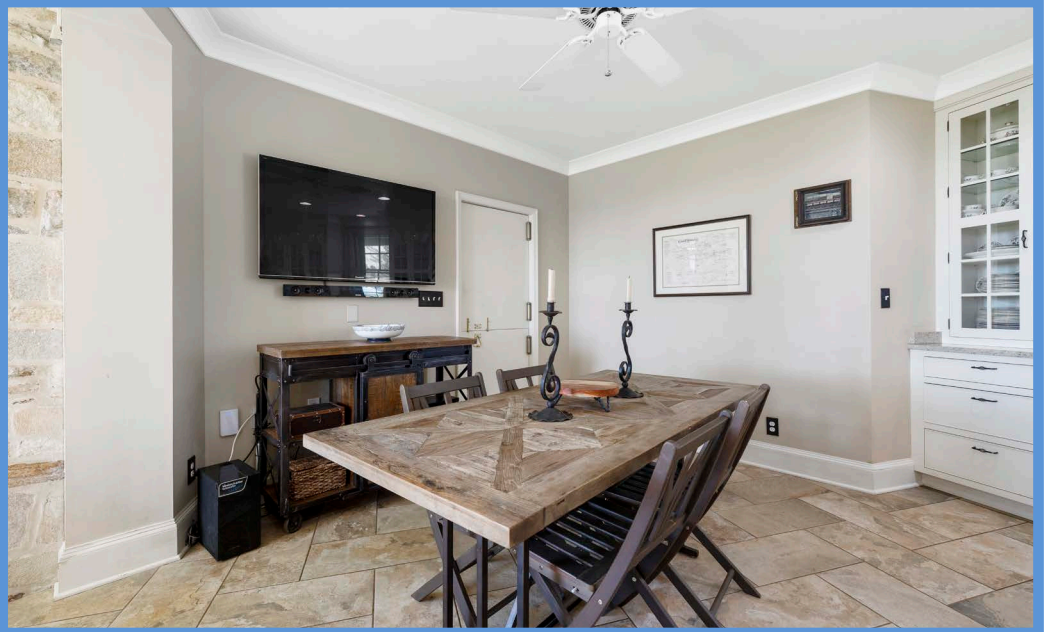
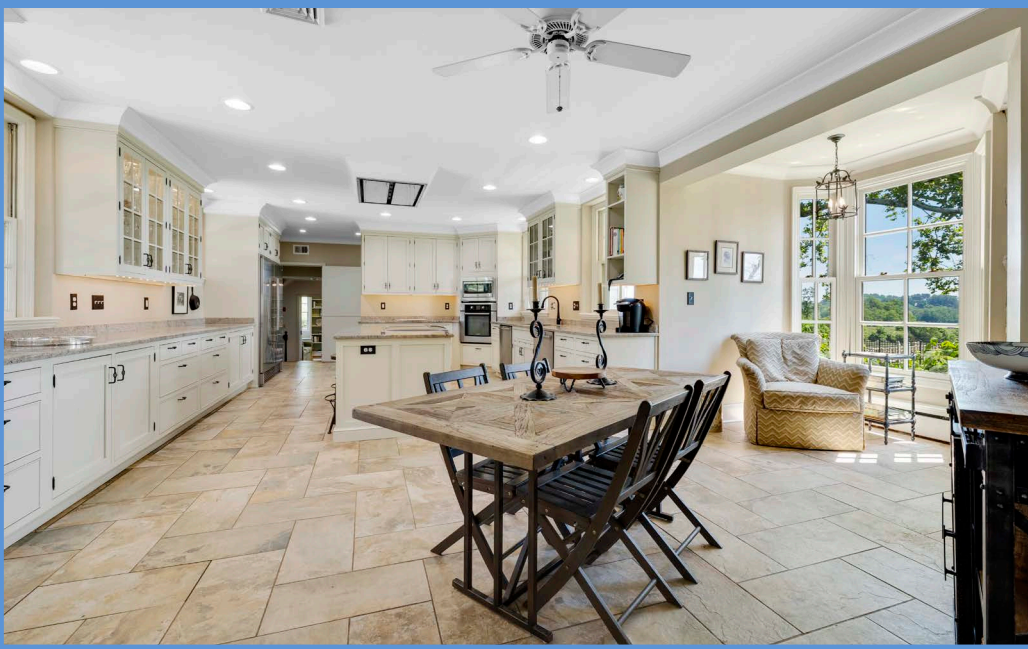
KAREN HUBBLE BISBEE

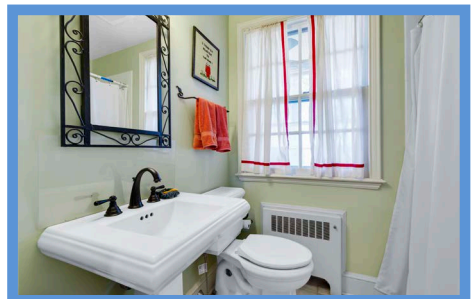
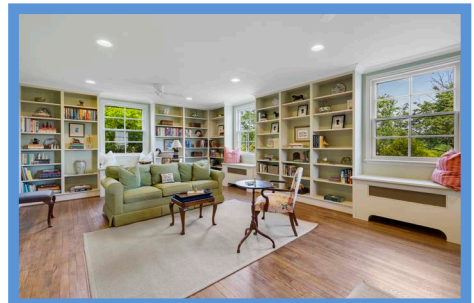
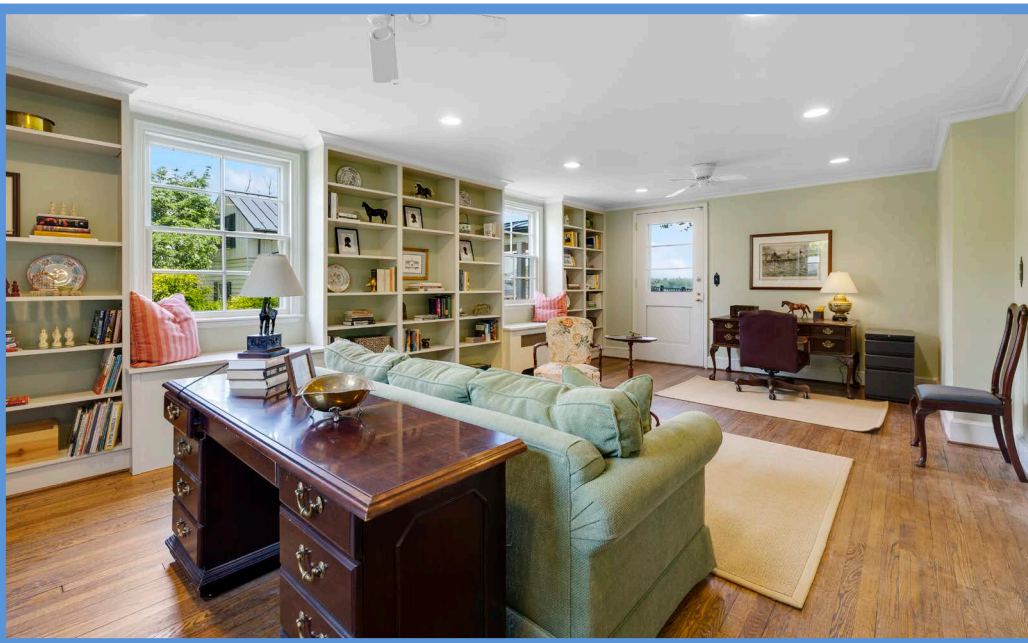
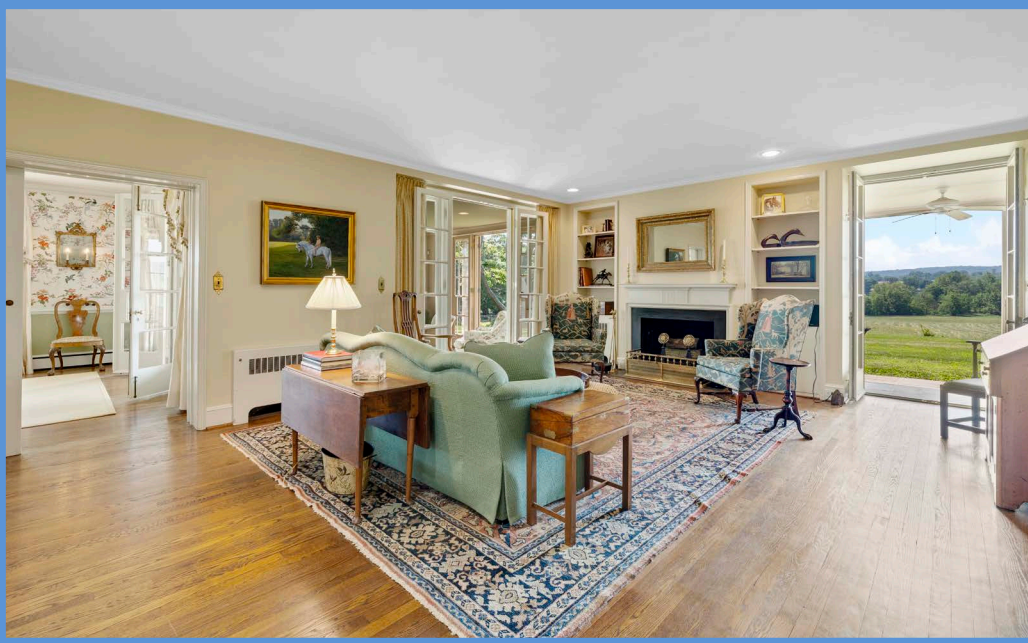
Principal, Associate Broker, ABR, GRI  
Karen@HubbleBisbee.com  
443-838-0438 (Mobile)  
410-321-1411 (Office)

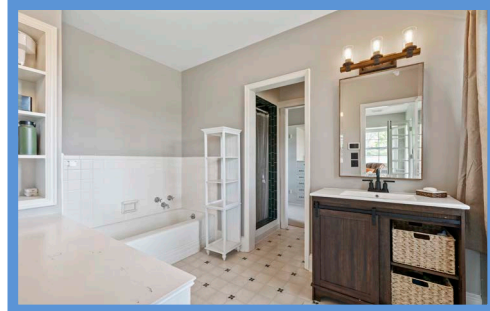
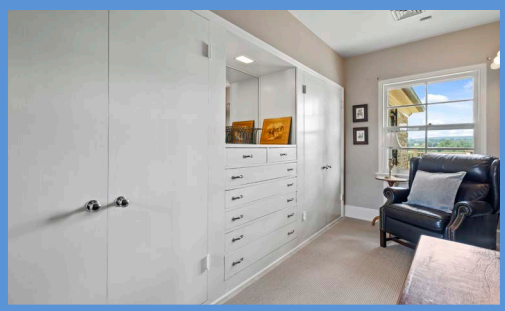
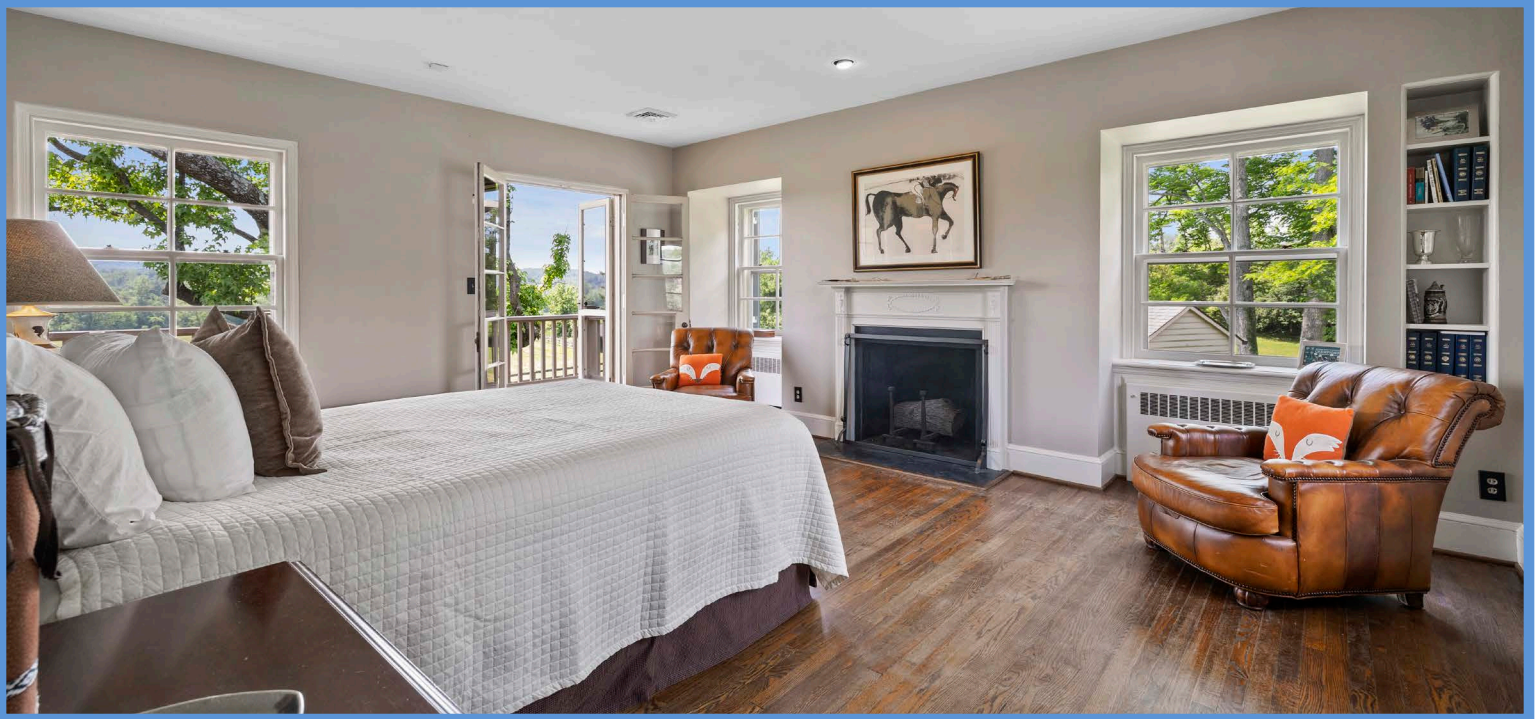
WWW.HUBBLEBISBEE.COM | (410) 321-1411 (OFFICE) | 











**ESTATE HOUSE**

- Designed by Charles Nes, Jr, circa 1948
- Traditional style home with beautifully integrated mid-century modern elements
- Butler stone exterior with cedar siding

**FOYER** 16'4" X 12'1"

- Oversized paneled entry door with full-size sidelights
- Hardwood flooring
- Deep cased portal to oak staircase with hardwood handrails
- Brass/blown glass pendant light
- French doors to Den
- Deep cased portal to Hall to Dining Room with 2 closets and access to Powder Room with hardwood flooring, Kohler pedestal sink and matching flush, window and wall sconce lighting
- Cased portal to Library
- Deep cased portal to Living Room

**LIVING ROOM** 24'1" X 18'0"

- Hardwood flooring
- Wood burning fireplace with Georgian mantel, slate surround and hearth
- Full-length built-in bookcases
- French doors to Covered Porch flanked by two windows with custom drapery treatments
- Four additional windows
- Dentil crown molding

**DEN** 18'0" X 11'0"

- Hardwood flooring
- Stone wall
- Built-in bookcases with base cabinets
- French doors to Covered Porch
- Window

- Crown molding
- Recessed lighting

**LIBRARY** 20'6" X 17'3"

- Hardwood flooring
- Wood burning fireplace with Georgian mantel, slate surround and hearth
- Built-in bookcases flanking fireplace with base cabinets
- Built-in glass-door bookcase with base cabinets
- Concealed wet bar with mirror-back glass shelving, laminate counter, stainless steel prep sink, GE stainless steel under-counter refrigerator and recessed lighting
- French doors to covered Porch
- Crown molding
- Shelved closet
- Pocket door to Dining Room
- French doors to Sunroom flanked by windows with custom drapery treatments

**SUNROOM** 17'1" X 14'6"

- Heated hardwood flooring
- Stone wall
- Two walls of windows with 2 sets of French doors to Patio
- Beadboard ceiling
- Crown molding
- Recessed lighting
- Ceiling fan
- French doors to Dining Room flanked by 2 windows with custom drapery treatments (Dining Room side)

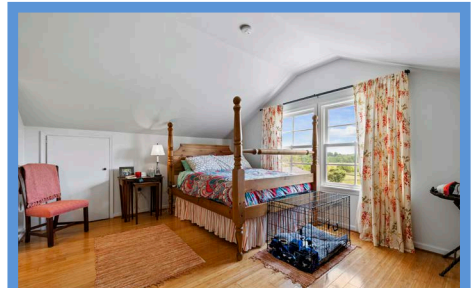
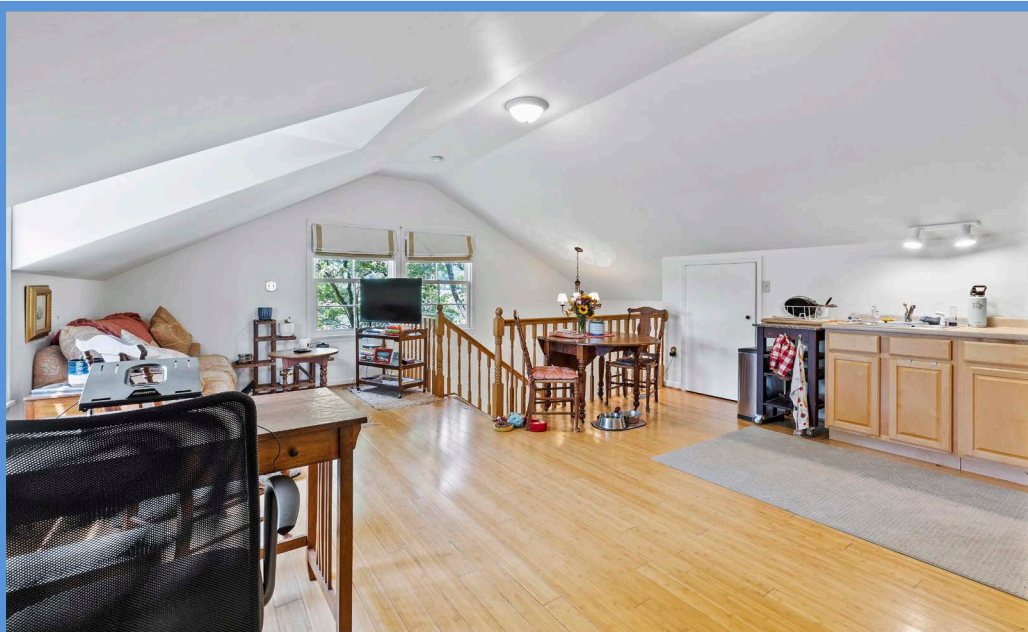
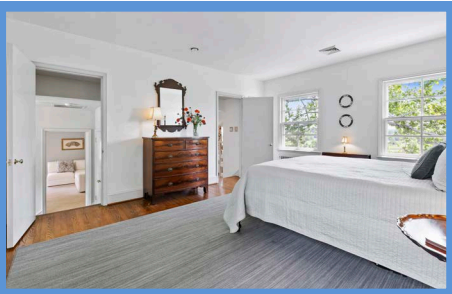
**DINING ROOM** 19'3" X 14'1"

- Hardwood flooring
- Triple window with custom drapery treatment
- Crown molding

- Chair rail
- Access to Library and Hall
- Swinging Dutch door to Kitchen
- Wall sconce lights excluded

**KITCHEN** 29'6" X 15'8"

- Renovated by Cox Kitchens 2012
- Natural stone tile floor
- Custom recess-panel wood cabinetry including island/breakfast bar, illuminated glass-door cabinets, pot-pan drawers, bookcase, pull-out trash/recycle bins and dovetailed drawers
- Granite counters
- Electrolux stainless steel built-in refrigerator and adjoining built-in freezer
- Electrolux built-in range with 2 ovens and ceiling mounted exhaust vent with custom moldings
- Bosch stainless steel wall oven
- Stainless steel built-in microwave (2022)
- Two Bosch stainless steel dishwashers
- Elkay stainless steel undermount double sink
- Breakfast area in bay window with stone wall
- Four additional windows
- Crown molding
- Recessed lighting
- Under-cabinet lighting
- Ceiling fans
- Panasonic wall mounted TV with Samsung sound bar
- Access to Kitchen Hall with natural stone tile floor, double closet, access to Mudroom, access to Back Hall and access to Laundry Room



### LAUNDRY ROOM 7'3" X 7'0"

- Natural stone tile floor
- Samsung washer and 2 dryers
- Base cabinet with granite counter and ceramic sink
- Open shelving
- Exit door to Covered Front Porch
- Ceiling light

### MUDROOM 9'1" X 6'3"

- Flagstone floor
- HardiPlank walls
- Beadboard ceiling
- Paneled exit door with sidelights
- Ceiling light
- Dutch door to Indoor Dog Kennel

### INDOOR DOG KENNEL 13'10" X 5'7"

- Heated ceramic tile floor
- Beadboard ceiling
- Walls of HardiPlank and cedar siding
- Triple window
- Magnet activated dog door
- Recessed lighting
- Ceiling fan
- Automatic water bowl

### BACK HALL

- Hardwood flooring
- Open carpeted staircase to Upper and Lower Levels with windows
- Walk-in closet
- Access to Bath
- French doors to Office/Studio

### FAMILY ROOM 23'9" X 15'3"

- Hardwood flooring
- Two walls of custom built-in bookcases
- Three windows
- Exit door with window
- Crown molding
- Recessed lighting
- Two ceiling fans

### HALL BATH

- Ceramic tile floor
- Kohler pedestal sink
- Matching Kohler flush
- Tub/shower combination with ceramic tile surround
- Window

## SECOND FLOOR

### HALL

- Landing for main staircase with original lattice-work railing overlook
- Hardwood flooring
- Two windows with custom swag treatments
- Walk-in closet
- Brass/glass pendant light above staircase
- Recessed lighting

### PRIMARY SUITE

- Private hall entry with 2 windows, 2 double closets and recessed light

### PRIMARY BEDROOM 18'3" X 14'8"

- Hardwood flooring
- Wood burning fireplace with Colonial mantel, slate surround and hearth
- French doors to Ipe Roof Deck
- Four windows
- Built-in bookcase

### PRIMARY BATH

- Vinyl flooring
- Vanity with solid surface top and seamless sink, framed beveled mirror and overhead lighting
- Soaking tub with ceramic tile surround
- Ceramic tile shower stall
- Built-in dressing table and open shelving with overhead lighting
- Window

- Access to Dressing Room

### DRESSING ROOM 13'6" X 7'9"

- Vinyl flooring
- Two double closets flanking built-in dresser with mirror
- Window
- Ceiling light/exhaust fan

### BEDROOM 2 17'1" X 14'0"

- Private hall entry with double closet and linen closet
- Hardwood flooring
- French doors to Ipe Roof Deck
- Two windows
- Built-in bookcase with base cabinets
- Crown molding
- Recessed light
- Private Bath

### BATH

- Marble finish ceramic tile floor and tub surround
- Kohler pedestal sink with 2 wall sconce lights
- Matching Kohler flush
- Kohler tub/shower combination
- Window
- Crown molding
- Ceiling light/exhaust fan

### PRIMARY SUITE 2

### BEDROOM 3 17'2" X 14'7"

- Hardwood flooring
- French doors to Ipe Roof Deck with full-size sidelights
- Window
- Crown molding
- Built-in bookcase
- Walk-in closet with attic access
- Recessed light
- Private Bath
- Drapery treatments excluded

### BATH

- Marble finish ceramic tile floor and tub surround
- Kohler pedestal sink with 2 wall sconce lights
- Matching Kohler flush
- Kohler tub/shower combination
- Window
- Crown molding
- Ceiling light/exhaust fan
- Access to Dressing Room

### DRESSING ROOM 11'10" X 8'0"

- Hardwood flooring
- Window
- Four closets- 3 with shelving
- Ceiling light
- Access to Hall

### BEDROOM 4 16'3" X 14'0"

- Hardwood flooring
- Three windows
- Walk-in closet
- Access to Back Hall with back staircase
- Private Bath
- Drapery treatments excluded

### BATH

- Ceramic tile floor and tub surround
- Kohler pedestal sink with 2 wall sconce lights
- Matching Kohler flush
- Kohler tub/shower combination
- Window
- Ceiling light/exhaust fan
- Drapery treatment excluded

### BACK HALL

- Hardwood flooring
- Open back staircase with windows
- Double closet
- Ceiling light
- Access to Bedroom 5

### BEDROOM 5 15'0" X 14'1"

- Wall-to-wall carpeting
- Two windows with Roman shades
- Ceiling light
- Private Bath

### BATH

- Wood pattern ceramic tile floor
- Ceramic tile wainscot with glass tile border
- Vanity marble finish quartz top, undermount sink, framed mirror and overhead lighting
- Ceramic tile shower stall with glass tile borders
- Ceiling light/exhaust fan
- Access to large custom fitted walk-in closet with wall-to-wall carpeting, ceiling light and window with Roman shade

## LOWER LEVEL

### RECREATION ROOM 28'1" X 13'4"

- Staircase access from Back Hall
- Stone finish ceramic tile floor
- Built-in bookcase with base cabinets and TV niche
- Bar with base and wall cabinets, butcher block top and Kenmore refrigerator
- Window
- Exit door
- Recessed lighting
- Two double closets
- Utility closet with freezer
- By-pass closet doors concealing electric service panels, alarm system and home media panels
- Access to storage rooms with built-in storage shelving
- Additional storage closet with access to crawl space

### UTILITY ROOM

- Unfinished
- Buderus oil-fired boiler and hot water supply
- Well water conditioning system
- Access to crawl space

## EXTERIOR

- Constructed of Butler stone, beaded cedar siding and board & batten siding
- Slate roof with copper standing seam roofing
- Copper gutters and downspouts
- Bluestone entry area at circular drive with stone garden walls, steps and walkway to covered bluestone Porch at main entry
- Decorative metal fenced back Yard with bluestone walkway to Mudroom
- Covered bluestone Porch at Library and Den flows to bluestone Patios at Living Room and Sunroom
- Wraparound Ipe Roof Deck
- Stone garden walls
- Springhouse with cedar shake roof
- Circular drive at main entry with central garden
- Drive-through lattice-work Porte Cochere with flanking breezeways to House and Garage
- Two large parking pads at Garage and behind Garage
- Standby propane fueled generator
- Extensive professional landscaping
- Playhouse excluded

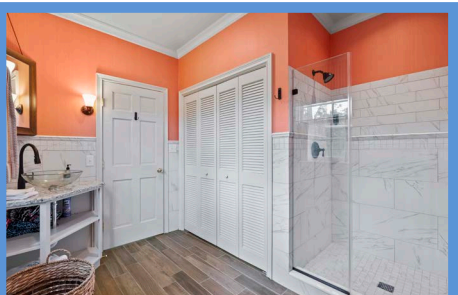
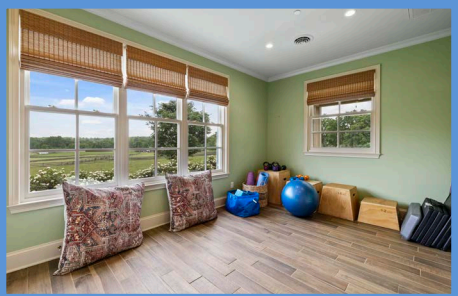
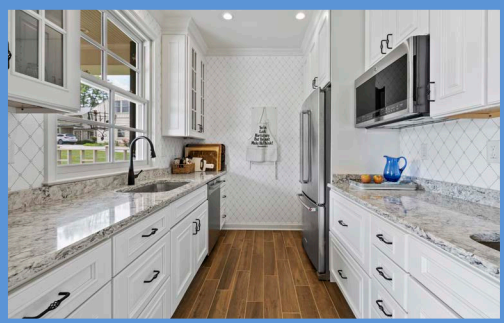
## GARAGE

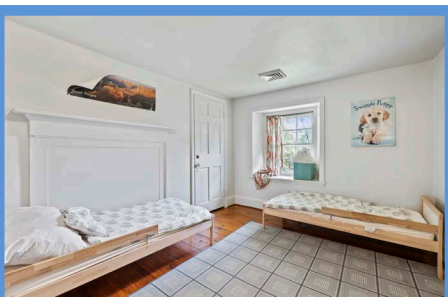
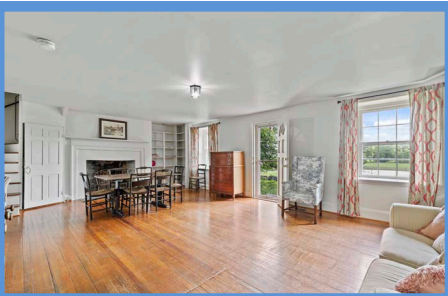
- Three-car
- Automatic door openers
- Kenmore washer and dryer
- HVAC unit for Apartment- 2021
- Apartment above

### APARTMENT

- Access from slate Foyer at Breezeway with open pine staircase and window







## LIVING ROOM 20'9" X 18'0"

- Vaulted ceiling
- Bamboo flooring
- Double window and additional window
- Chandelier above staircase with shades
- Ceiling lights
- Large knee-wall storage closet with State Select electric water heater
- Kitchen area with maple cabinets, laminate counters and stainless steel sink
- Banister overlook to staircase

## BEDROOM 18'0" X 12'6"

- Vestibule entry with walk-in closet
- Vaulted ceiling
- Bamboo flooring
- Double window and additional window
- Large knee-wall storage closet
- Access to Bath

## BATH

- Ceramic tile floor
- Vanity with matching mirror, glass shelf and overhead lighting
- Tub/shower combination with ceramic tile surround
- Matching wall cabinet
- Ceiling light with exhaust fan

## POOL HOUSE

- Designed and built to match house
- Beaded Hardiplank siding
- Standing seam copper roof

## GREAT ROOM 22'0" X 18'2"

- Entry through 2 sets of French doors
- Wood finish ceramic tile floor
- Beadboard paneled ceiling
- Gas fireplace with slate surround
- Built-in bookcases with base cabinets flanking fireplace
- TV niche above fireplace with Samsung wall mounted TV
- Two windows
- Crown molding
- Recessed lighting

## KITCHEN 10'1" X 8'0"

- Wood finish ceramic tile floor
- White recess-panel cabinets including glass-door cabinets, pot-pan drawers, pull-out trash/recycle bins, pantry cabinet and dovetailed drawers
- Granite counters
- KitchenAid stainless steel French door refrigerator
- GE Profile stainless steel built-in microwave
- Bosch stainless steel dishwasher
- Window
- Crown molding
- Recessed lighting
- Under-cabinet lighting

## EXERCISE ROOM 15'0" X 10'1"

- French doors from Great Room
- Wood finish ceramic tile floor
- Triple window and additional window with woven shades
- Crown molding
- Built-in base cabinet with Fios TV hookups above
- Walk-in closet
- Utility closet with sprinkler system
- Recessed lighting

## BATH

- Wood finish ceramic tile floor
- Porcelain tile wainscot and shower stall
- Open shelving vanity with granite top, glass vessel sink and wall sconce lighting
- Shower stall with glass door enclosure
- Laundry closet with washer/dryer hookups, utility sink and Norwilt tankless hot water supply
- Window with custom window treatment
- Crown molding
- Recessed lighting
- Exhaust fan

## POOL ENCLOSURE

- Enclosed with lattice-work fencing and stone garden walls with 3 garden gates
- In-ground Pool 50' X 20'
- Bluestone Patios, Pool Decking and Veranda
- Full-width Veranda to Pool House with recessed lighting and 2 ceiling fans

## GUEST HOUSE

### LIVING ROOM 23'0" X 16'5"

- Paneled entry door with half-round window
- Vintage pine flooring
- Oversized stone fireplace with Colonial mantel and brick hearth
- Matching Colonial mantel on opposite wall
- Built-in bookcase
- Two open turned staircases to 2nd level with wrought-iron handrails
- Four windows
- Water closet
- Two under-stair closets
- Ceiling light
- Access to Kitchen

### KITCHEN 15'6" X 12'9"

- Vinyl flooring
- Maple cabinets
- Laminate counters
- GE refrigerator
- Kenmore 5-burner electric range with warming drawer
- Kenmore dishwasher
- Stainless steel sink
- Two windows
- Breakfast area
- Pantry closet
- Closet with electric service panel
- Ceiling light
- Access to laundry/Mud Room

### LAUNDRY/MUD ROOM 13'3" X 7'3"

- Vinyl flooring
- Wall cabinetry
- Kenmore washer and electric dryer
- Beaded board ceiling
- Florescent lighting
- Exit door with 9-pane window

## SECOND FLOOR

### HALL

- Vintage wide plank pine flooring
- Window
- Open staircase to Main Level
- Concealed staircase to attic
- Ceiling light

### BEDROOM #1 14'3" X 13'3"

- Vintage pine flooring
- Two windows
- Two closets- 1 shelved

### BEDROOM #2 13'4" X 10'6"

- Vintage wide plank pine flooring
- Two windows
- Closet
- Open staircase to Main Level
- Ceiling light

### BEDROOM #3 12'4" X 9'3"

- Vintage wide plank pine flooring
- Window
- Closet
- Decorative Colonial mantel with brick hearth
- Ceiling light

### HALL BATH

- Vinyl flooring
- Vanity with mirrored medicine cabinet and overhead lighting
- Tub/shower combination with ceramic tile surround
- Window
- Ceiling light/exhaust fan

## BASEMENT

- Bilko door access
- Cement floor
- Rudd HVAC with oil-fired furnace for forced air heat
- State Select electric water heater
- Fuel oil storage tank
- Well water pressure tank
- Two windows

## EXTERIOR

- Stone 18th century 2-story farmhouse with wood clapboard addition
- Copper standing seam roof, gutters and downspouts
- Renovated including new kitchen and bath, refinished floors, freshly painted- 2014
- Two-car garage sided in Hardiplank with attic storage, 2 windows and exit door
- Garden shed
- Grounds bordered on 3 sides with stone garden walls
- Landscaped
- Borders paddocks and fields with bucolic pastoral views

## FARM

- Total 183.4 acres
- Residential/equestrian property
- Separate gated farm lane
- Total 20 stalls in 3 well-maintained barns
- Seven total run-in sheds- 1 with possible conversion for 6 additional stalls
- Riding ring- updated 2019
- Total 7 fenced paddocks with water supply and electric and several large fenced fields
- Additional fields and meadows
- Shooting range with 440 square-foot cabin
- Bisected by the Western Run with bridge

## BANK BARN

- Total 5408 square feet- both levels
- Silo with 3 levels (480 square feet), spiral staircase to top level Office with windows surrounding and entry level half-bath
- Upper level hay loft
- Total 11 stalls
- Paneled tack room
- Grooming closet
- Wash stall
- Feed closet
- Exterior wash stall tie rack with rubber mat surface
- Exterior manure pit

## UPPER BARN

- Total 2340 square feet- includes hayloft
- Center aisle with cross tie
- Imprinted asphalt flooring
- Total 5 stalls
- Feed room with fixed staircase to hayloft
- Wash stall
- Tack room with half-bath, storage loft and washer and dryer

## GARAGE

- Total 2128 square feet
- Amish built post and beam construction
- Five-car capacity with 2 bays double-deep to accommodate vehicle and trailer together
- Separate bay with storage room
- Workshop with workbenches, storage shelving, pegboard wall panels and interior/exterior access

## BARRACKS BARN

- 'H' design
- Imprinted asphalt floor
- Four stalls
- Wash stall
- Tack room
- Hayloft
- Two large adjacent fields



*Hubble  
Bisbee*

CHRISTIE'S  
INTERNATIONAL REAL ESTATE

GREEN SPRING  
STATION  
410-321-1411

ANNAPOLIS  
410-321-1833

