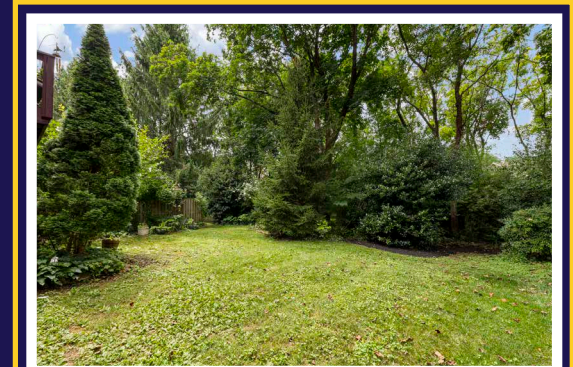
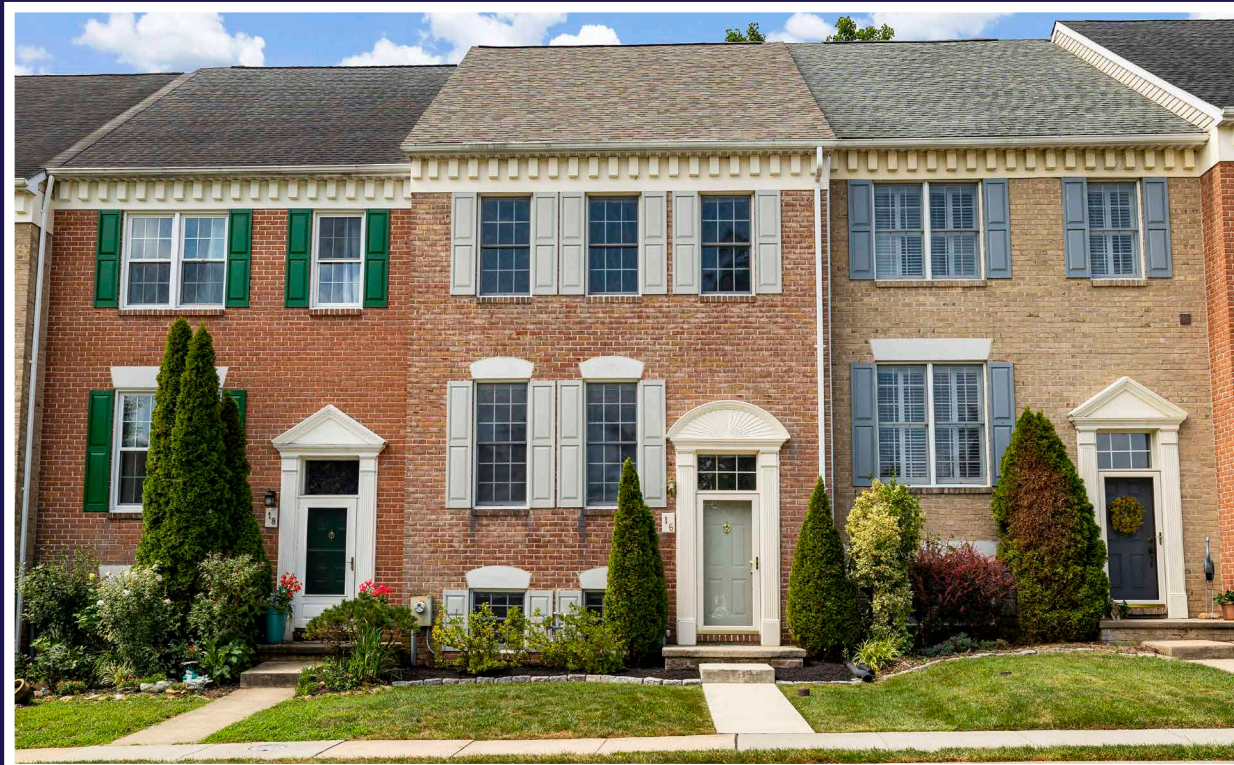


# Hubble Bisbee

of Long & Foster Real Estate

CHRISTIE'S  
INTERNATIONAL REAL ESTATE



## 16 SNOWBERRY COURT

HUNTERS RUN

KAREN HUBBLE BISBEE

Associate Broker, GRI, ABR

[Karen@HubbleBisbee.com](mailto:Karen@HubbleBisbee.com)

443-838-0438



JENNIFER LANGFORD

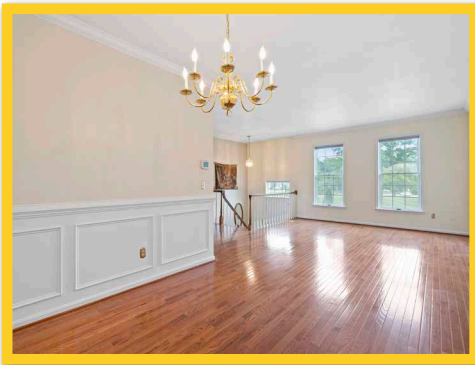
Realtor

[JenniferLangford@HubbleBisbee.com](mailto:JenniferLangford@HubbleBisbee.com)

443-617-3160



GREEN SPRING STATION | 410-321-1411 (O) | [WWW.HUBBLEBISBEE.COM](http://WWW.HUBBLEBISBEE.COM)



### FOYER

- Paneled entry door with transom and full-view storm door
- Ceramic tile floor
- Open staircases to Main and Lower Levels with hardwood handrails and painted spindles
- Brass/glass pendant light

### LIVING ROOM

- Hardwood flooring
- Two windows with pleated shades
- Crown molding
- Open carpeted staircase to 2nd Level with hardwood handrails and painted spindles
- Banister overlook to Foyer
- Brass switch plate/outlet covers and HVAC vent covers- throughout house
- Flows to passage to Kitchen with double closet, chair rail with wainscot moldings and Powder Room with ceramic tile floor, vanity, plate glass mirror with overhead lighting and exhaust fan
- Flows to Dining Room



### DINING ROOM

- Hardwood flooring
- Crown molding
- Chair rail with wainscot moldings
- Brass 8-light chandelier
- Access to Kitchen



### KITCHEN

- Ceramic tile floor
- Raised-panel oak cabinetry including island, lazy-Susan base and wall cabinets, pull-out trash bin, dovetailed drawers and soft close cabinets/drawers
- Granite counters
- Appliances replaced 2012
- Frigidaire stainless steel refrigerator
- Kenmore electric range with warm zone
- Samsung built-in microwave
- Whirlpool dishwasher
- Stainless steel undermount double sink with Insinkerator disposal
- Breakfast area with sliding glass doors to Deck with vertical blinds and brass/



- glass pendant light
- Window with plantation blind
- Pantry closet
- Fluorescent light ceiling panel

## SECOND FLOOR

### HALL

- Laminate flooring
- Double linen closet
- Ceiling light

### PRIMARY BEDROOM

- Vaulted ceiling
- Laminate flooring
- Three windows with shades
- Two double closets
- Ceiling fan
- Open carpeted staircase private Loft with hardwood handrails

### PRIMARY BATH

- Ceramic tile floor, tub surround and shower stall walls
- Vanity with solid surface top and seamless sink, plate glass mirror, overhead lighting and mirrored medicine cabinet
- Soaking tub
- Shower stall with glass door enclosure
- Ceiling light/exhaust fan

### LOFT

- Lofted ceiling with 2 skylights
- Wall-to-wall carpeting
- Banister overlook to Primary Bedroom
- Dual access to Attic with Carrier HVAC heat pump unit

### BEDROOM 2

- Wall-to-wall carpeting
- Window with shade
- Double closet

### BEDROOM 3

- Wall-to-wall carpeting
- Double window with mini-blind
- Double closet

### HALL BATH

- Ceramic tile floor and tub surround
- Vanity with solid surface top and seamless sink, plate

- glass mirror, overhead lighting and mirrored medicine cabinet
- Tub/shower combination
- Exhaust fan

## LOWER LEVEL

### HALL

- Open staircase access from Foyer
- Wall-to-wall carpeting
- Double closet and additional closet
- Under-stair storage closet
- Crown molding
- Two ceiling lights
- Flows to Family Room

### FAMILY ROOM

- Wall-to-wall carpeting
- Wood burning fireplace with Colonial mantel, slate surround and hearth, glass doors
- Sliding glass door to Patio and Yard
- Crown molding

### BEDROOM 4

- Wall-to-wall carpeting
- Two windows with mini-blinds
- Walk-in closet

### BATH

- Ceramic tile floor and tub surround
- Vanity with solid surface top and seamless sink, plate glass mirror & overhead lighting
- Tub/shower combination
- Exhaust fan

### LAUNDRY/UTILITY ROOM

- Carrier HVAC unit with gas heat and humidifier
- Rheem electric water heater
- KitchenAid washer and dryer

## EXTERIOR

- All brick Colonial style townhouse
- Asphalt shingle roof- 2019
- Elevated wood Deck- access from Kitchen
- Concrete Patio covered by Deck- access from Family Room

