

*Hubble  
Bisbee*

CHRISTIE'S  
INTERNATIONAL REAL ESTATE

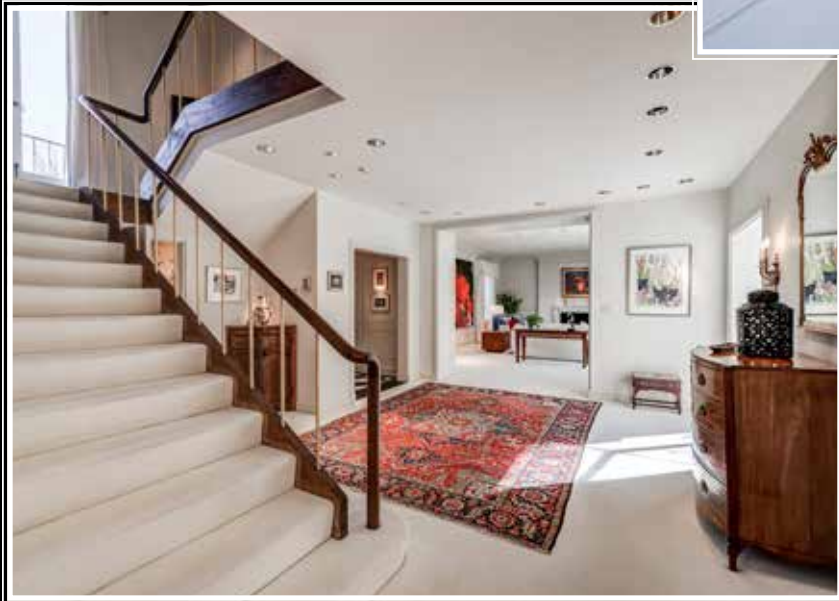


21 BLYTHEWOOD ROAD

BLYTHEWOOD

















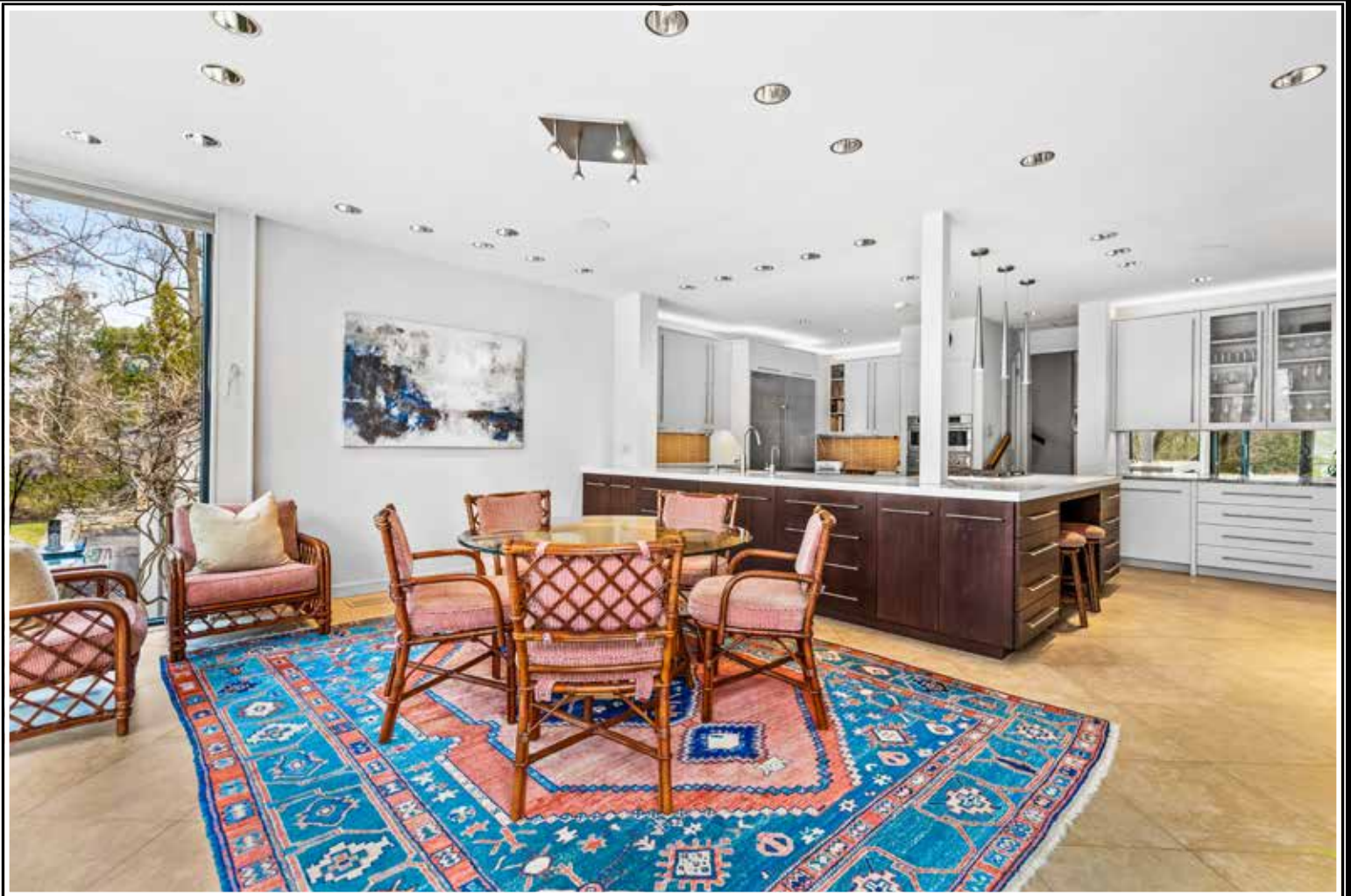
























































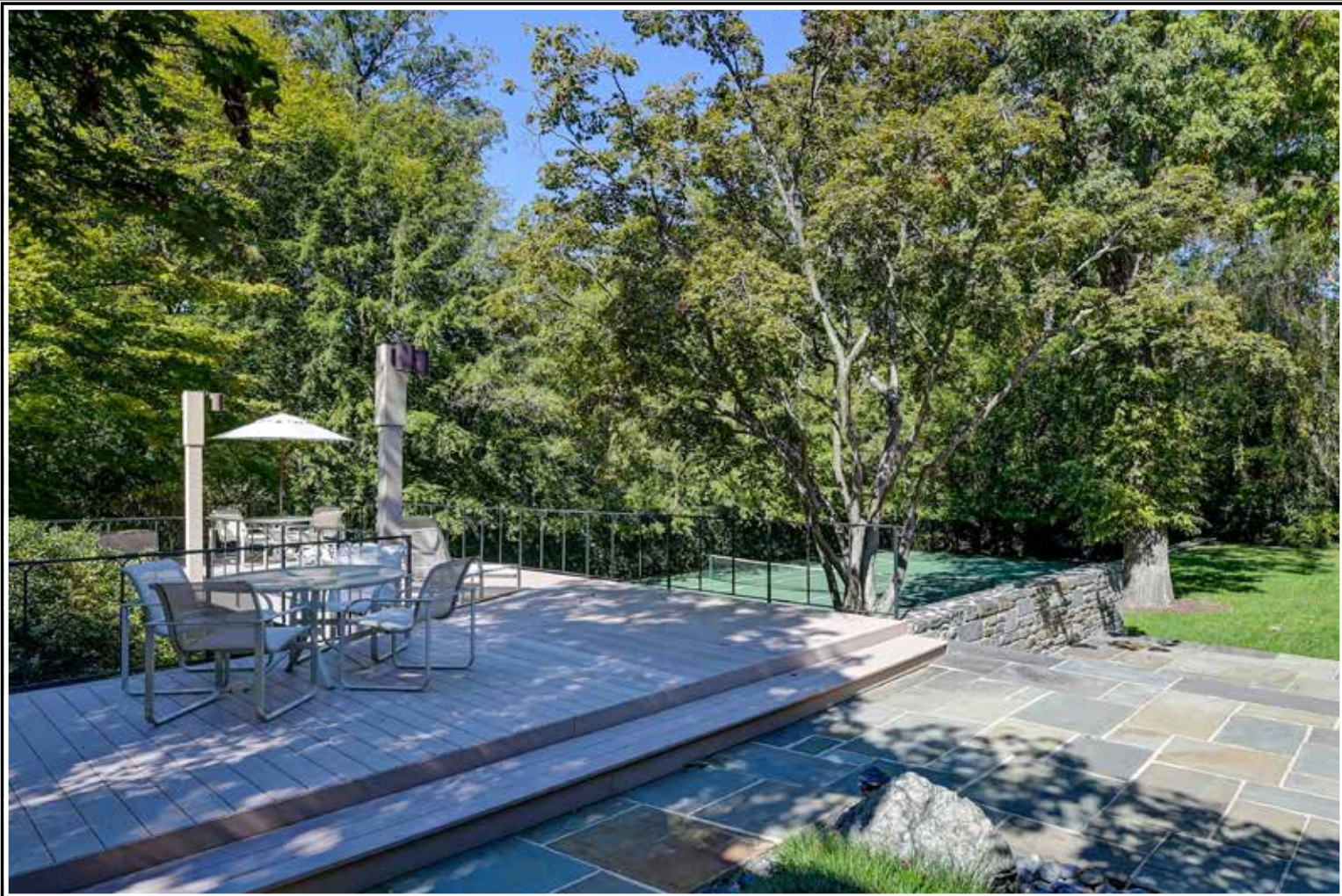


















































# FEATURES

## VESTIBULE 7'3" X 6'9"

- Beaded oak diagonal-plank entry door with window with exterior wrought iron grill
- Black and white marble floor
- Crown molding
- Wall panel moldings
- Recessed lighting
- Wide cased portal to Foyer

## FOYER 21'5" X 17'7"

- Wall-to-wall carpeting
- Open modern carpeted staircase with hardwood handrails and brass spindles
- Recessed lighting
- Two brass double wall sconce lights
- Access to Hall
- Double pocket doors with step-down to Dining Room
- Cased portal with step-down to Solarium
- Wide cased and paneled portal to Living Room

## LIVING ROOM 26'2" X 18'11"

- Wall-to-wall carpeting
- Raise-paneled fireplace wall with oversize (5'5" X 4') wood burning fireplace, marble mantel and hearth
- Window wall (2017) with oversize sliding doors to Patio and Koi pond with custom drapery treatment

- Two sets of stationary floor length French windows to walled front garden with custom drapery treatments
- Built-up crown molding
- Bi-fold doors concealing bar with base cabinet, mahogany top, mahogany open shelving and lighting
- Matching bi-fold doors to closet with Sonos whole house audio controls, base cabinet, mahogany top and mahogany open shelving
- Custom built-in burl walnut end table with electric, swing-out shelving and electronic controls
- Recessed lighting
- Built-in wall speakers

## SOLARIUM 20'7" X 7'1"

- Bluestone floor and steps from Foyer
- Two walls of glass with greenhouse ceiling
- Wide stone planter with drains open to Dining Room with pleated shade
- Track lighting
- Two hose bibs
- Two floor drains

## DINING ROOM 20'7" X 17'0"

- Parquet flooring
- Wood burning fireplace with large marble mantel (5' X 4') and slate hearth
- Two glazed doors to Patio
- Built-up dentil crown molding
- Wall panel moldings
- Wide planter with drains open to Solarium with expansive views of outdoor Koi pond

- Brass/crystal 18-light chandelier
- Recessed lighting
- Built-in ceiling speakers
- Dual access to Kitchen through bi-fold doors

## KITCHEN 30'3" X 20'10"

- Trish Houck design (2015)
- Prevo custom wood cabinetry in natural wood finish and off-white finish including planning desk with file drawers and organization cabinet, wraparound peninsula with breakfast bar, glass-door cabinets, lazy-Susan base cabinet, pot-pan drawers, bookcase, tray cabinet, wine rack, pull-out trash/recycle bins, utensil drawers and dovetailed drawers
- Quartz counters and granite counter
- Glass tile backsplashes
- Illuminated full-length glass door china/glassware/crystal cabinet
- Sub-Zero stainless steel built-in refrigerator
- Sub-Zero stainless steel built-in freezer adjacent refrigerator
- Sub-Zero undercounter refrigerator with matching front panel
- Wolf stainless steel 5-burner gas cooktop with Wolf retractable downdraft vent
- Monogram stainless steel wall oven
- Monogram Advantium stainless steel built-in microwave/convection oven
- Asko dishwasher with matching front panel
- Blanco Magnum large stainless steel undermount sink with disposal and instant hot water dispenser

- Large breakfast area with 2 full-length window walls including sliding doors to patio and pleated shades
- Recessed lighting
- Three modern pendant lights above cooktop
- Modern multi-directional 4-light ceiling fixture in breakfast area
- Under-cabinet LED strip lighting
- Built-in ceiling speakers
- Access to Hall

HALL 16'10" X 7'2"

- Spans from Foyer to back staircase
- Wall-to-wall carpeting
- Oak open-tread back staircase to upper and lower levels
- Three closets- 1 with security system components
- Recessed lighting
- Access to Library

LIBRARY 27'0" X 12'10"

- Wall-to-wall carpeting
- Wormy chestnut entry doors- folds back into wall
- Wormy chestnut paneled chimney wall with wood burning fireplace with stone surround and hearth
- Custom built-in wormy chestnut bookcases with base cabinets, video/ CD drawers and TV niche
- Built-in flush mount file drawers
- Floor length triple casement windows with exterior wrought iron railing- 2 functional with screens
- Additional window with custom Roman shade
- Recessed lighting

- Built-in ceiling speakers

POWDER ROOM 10'10" X 6'2"

- Access from Foyer
- Wall-to-wall carpeting
- Chinoiserie hand painted metallic wall covering
- Pedestal sink with plate glass mirror and 2 brass double wall sconce lights with shades
- Additional matching plate glass mirror and 2 brass double wall sconce lights with shades
- Window with marble sill and double rod shears
- Exhaust fan

FAMILY ROOM 24'6" X 22'9"

- Access from mid-level landing of back staircase with floor length casement window
- Vaulted wood paneled ceiling with exposed wood trusses
- Oak peg-installed wide plank hardwood flooring
- Large greenhouse dormer window with 3 lower casement windows with screens
- Built-in bookcases, base cabinets with Samsung TV
- Built-in surround sound
- Wet bar in mirrored alcove with base cabinet and stainless steel sink
- Narrow, deep storage closet
- Walk-in closet with shelving and wall safe
- Walk-in closet with built-in drawers
- Four brass triple wall sconce lights with shades

- Three-light billiard lamp with drum shades
- Track lighting
- Low voltage strip lighting along top perimeter of walls
- Tournament size 9-foot oak pool table and matching wall mounted cue rack- negotiable
- Staircase with window, shelved closet and access to upper level Bath 3

**SECOND FLOOR**

HALL 29'9" X 8'10"

- Landing for main staircase with wraparound banister overlook
- Wall-to-wall carpeting
- Stationary floor length French window on main staircase landing with custom drapery treatment and exterior balcony
- Flows to seating area (13'8" X 11'10") with wood burning fireplace with marble mantel and hearth, built-in flush mount cabinet and file drawers, banister overlook to staircase
- Recessed lighting
- Landing for open tread back staircase- down to Family Room- continues to 3rd Floor
- Walk-in linen closet and additional closet
- Passage to Bedrooms 4 and 5 and Hall Bath

PRIMARY BEDROOM 35'9" X 11'9"

- Primary Suite remodeled 2017 with design by Michelle Miller
- Private hall entry



- Wall-to-wall carpeting
- Window wall (19-foot wide) with sliding doors and electronic shades to private Ipe hardwood balcony overlooking Koi pond, pool and extensive woodland gardens
- Recessed Lutron LED lighting
- Two wall-mounted swingarm lamps
- Built-in ceiling speakers
- Separate HVAC zone
- Dual access to Dressing Room through pocket doors

### DRESSING ROOM 26'8" X 6'8"

- Wall-to-wall carpeting
- Extensive custom fitted wardrobe cabinetry including drawer base cabinets, open clothes racks, open shelving, shoe shelving, upper storage bins
- Triple casement window with electronic shade above drawer base cabinets with quartz top- brass hardware on windows secure opening at any angle
- Full length dressing mirror
- Recessed Lutron LED lighting
- Built-in ceiling speakers
- Pocket door to Primary Bath

### PRIMARY BATH 12'9" X 8'11"

- Heated porcelain tile floor
- Full-width cantilevered double vanity with quartz top, Duravit undermount sinks, Roburn mirrored and illuminated medicine cabinets, wall sconce lighting and under-cabinet ambient lighting
- Wall mounted makeup/shaving

- mirror
- Porcelain tile shower stall with mosaic tile floor, ceramic tile vertical accent, built-in bench, wall niches, 2 shower heads- 1 handheld, linear floor drain, recessed lighting and glass door enclosure
- Water closet
- Wall of plate glass mirror
- Recessed lighting
- Built-in ceiling speakers
- Exhaust fans in shower stall and water closet

### BEDROOM 2 18'0" X 17'0"

- Vestibule entry with access to custom fitted walk-in closet with built-in dresser
- Wall-to-wall carpeting
- Wood burning fireplace with marble mantel and hearth
- Triple window overlooking Koi pond and 3 additional windows
- Recessed lighting
- Brass/crystal 4-light chandelier
- Built-in ceiling speakers
- Private Bath

### BATH 2

- Wall-to-wall carpeting
- Designer pedestal sink with mirrored medicine cabinet, overhead lighting and vertical lighting
- Tub/shower combination with ceramic tile surround
- Wall of plate glass mirror
- Window with Roman shade
- Recessed lighting
- Exhaust fan

### BEDROOM 3 14'5" X 13'8"

- New wall-to-wall carpeting- 2022
- Double window
- Custom fitted walk-in closet
- Recessed lighting
- Two brass wall-mounted swingarm lamps
- Built-in ceiling speakers
- Private Bath

### BATH 3

- Porcelain tile floor
- Ceramic tile tub surround and vanity wall to ceiling
- Vanity with quartz top, Kohler undermount sink, mirrored medicine cabinet and overhead light
- Tub/shower combination
- Recessed lighting
- Exhaust fan
- Additional access from Family Room staircase

### BEDROOM PASSAGE

- Wall-to-wall carpeting
- Recessed lighting
- Access to Bedrooms 4 and 5 and Hall Bath

### BEDROOM 4 19'7" X 10'7"

- Wall-to-wall carpeting
- Two tall casement windows
- Wide double closet
- Recessed lighting

### BEDROOM 5 12'11" X 9'2"

- Wall-to-wall carpeting

- Barrel-vaulted ceiling
- Arched triple window
- Closet
- Recessed lighting
- Two brass wall-mounted swingarm lamps

### HALL BATH

- Ceramic tile floor and tub surround
- Wall mounted sink with chrome legs/towel bars, wall niche, mirrored medicine cabinet and overhead lighting
- Tub/shower combination with glass doors
- Window with mini-blind
- Linen closet
- Ceiling light

### THIRD FLOOR

- Upper landing for open tread back staircase
- Peg-installed wide plank hardwood flooring
- Skylight
- Track lighting
- Two finished storage rooms
- Two HVAC units- 1 with Honeywell air cleaner (2020)
- Walk-in cedar closet
- Walk-in closet with exhaust fan
- Ceiling panel attic access to roof

### LOWER LEVEL

#### BACK FOYER 10'11" X 6'3"

- Bluestone floor

- Open tread back staircase from Main Level and to Lower Level Hall
- Spanish style glazed exit door with wooden grill to walled garden/courtyard
- Passage with oak built-in mudroom cabinetry, double closet, Powder Room and access to Garage

#### GARAGE 34'5" X 23'3"

- Three-car
- Heated and air conditioned
- Automatic door openers with power outage battery backup
- Ceramic tile floor
- Exit door with combination lock
- Large storage bin
- Base cabinet with double sink
- Wall mounted shelving
- Wall mounted fluorescent light
- Four large overhead lights

#### LOWER LEVEL HALL 10'11" X 6'4"

- Vinyl tile flooring
- Recessed light
- Access to Laundry Room
- Passage to Utility Room with glass-door storage cabinets, open shelving and access to Exercise Room

#### LAUNDRY ROOM 17'3" X 12'3"

- Vinyl tile flooring
- Double utility sink
- Whirlpool washer and dryer
- Electric service panels- both single phase and 3-phase power for AC only
- Cabinet with home media and phone panels
- Base cabinets with folding counter

- Storage cabinets
- Double window
- 'Walk-in safe' door to climate-controlled wine room (12'3" X 8'3") with Trenton Chilling unit (2022), wine racks and open shelving

#### EXERCISE ROOM 21'6" X 14'11"

- Wall-to-wall carpeting
- Plate glass mirror wall panels
- Double interior window with built-in bench
- Built-in open shelving
- Storage closet
- Recessed lighting
- Access to Hall with exit door to Patios and Pool, stone walls, vinyl tile floor, recessed lighting and access to Bath

### BATH

- Vinyl tile floor
- Vanity with solid surface top and seamless sink, plate glass mirror and overhead lighting
- Ceramic tile shower stall with glass door enclosure
- Water closet
- Built-in bench with upper shelf with clothes hooks
- Mirror door medicine cabinet
- Recessed lighting
- Exhaust fan

### UTILITY ROOM/WORKSHOP

#### 23'5" X 17'0"

- Epoxy floor finish
- Weil McLain gas-fired boiler for heat



- exchanger
- Chilled water supply for air conditioning units- installed 2021
- Two Bradford White 75 gallon gas-fired water heaters- 1 installed 2021
- HVAC unit with Honeywell air cleaner- total 5 zones
- Homeworks Lutron lighting system and panel
- Additional utility area with HVAC unit with Aprilaire humidifier
- Shelved closet
- Radon remediation system
- Fluorescent lighting

## **EXTERIOR**

- Stucco English country style home
- Slate roof
- Bluestone garden courtyard at main entry flows to walled garden with bluestone footpath
- Cast stone doorcase to main entry
- Antique driveway lamppost with photocell
- Two matching antique carriage lamps at main entrance
- Elevated bluestone wraparound Patios with bluestone steps to Pool area, wall with 3 archways and flow to Koi pond
- Two-tier 11,000 gallon Koi pond with waterfalls, bluestone stepping stones and circulating filtration system with bio filter capability
- Shed at Koi pond with 2 pumps and large filters to clean and recirculate pond water
- Heated in-ground Pool with natural gas-fired heater (2021), bluestone
- Patio and pool decking flanked by 2 engineered wood Decks
- Engineered wood Deck at Pool with hot tub, built-in bench seating and large custom built-in teak bar with custom drawers and space for under-counter refrigerator
- Engineered wood Deck at Pool with built-in bench seating, overlook to Tennis Court, curved floating staircase to woodland gardens, staircase to Tennis Court with large storeroom, wrought-iron railing surround to sunken garden area and steps to bluestone area with access to Garage and parking pad and steps to Lower Level and full Bath
- Tennis Court resurfaced 2022 and sunken below grade to prevent wind interference, all 4 walls/fences covered with mature ivy; historical significance as being the court where Howard Head created oversize tennis racquet
- Terraced lawns with extensive stone garden walls, wide bluestone garden steps and overlook to Tennis Court
- Large multi-colored stone slab sculpture mounted on footings in lawn
- Custom vine covered metal sculpture in shape of 40-foot tree
- Wooded hillside garden area with floating curved steps from Deck with man-made stream and waterfalls with recirculating system and bluestone Patio at bottom
- Walled garden courtyard with bluestone paving, access to Back
- Hall, access to Potting Shed, Carrier commercial 14 ton capacity HVAC chilling unit (2021) and access to Parking Pad
- Triple glass doors with combo lock to heated Potting Shed with storage shelving, utility sink and enclosed flush
- Large parking pad at Garage with stone garden walls
- Cobble-stone bordered driveway with 2 entrances from street and circular drive at main entry- new 2021
- New front sidewalk- 2021
- Extensive professional landscaping, mature trees, stone garden walls, mulched garden paths, stone walkways and landscape lighting- some controlled by photocells
- Four Arlo Pro exterior security cameras hardwired with backup rechargeable batteries, located at all entrances with 2-way communication
- Sunset to Sunrise high pressure sodium floodlights under roof eaves and above front door
- Motion sensor floodlights
- Two inground irrigation systems for entire property
- Two water meters calibrated by Baltimore City to measure water used outside exempt from sewer charges
- Extensive stormwater management drainage system incorporating downspouts and exterior drains

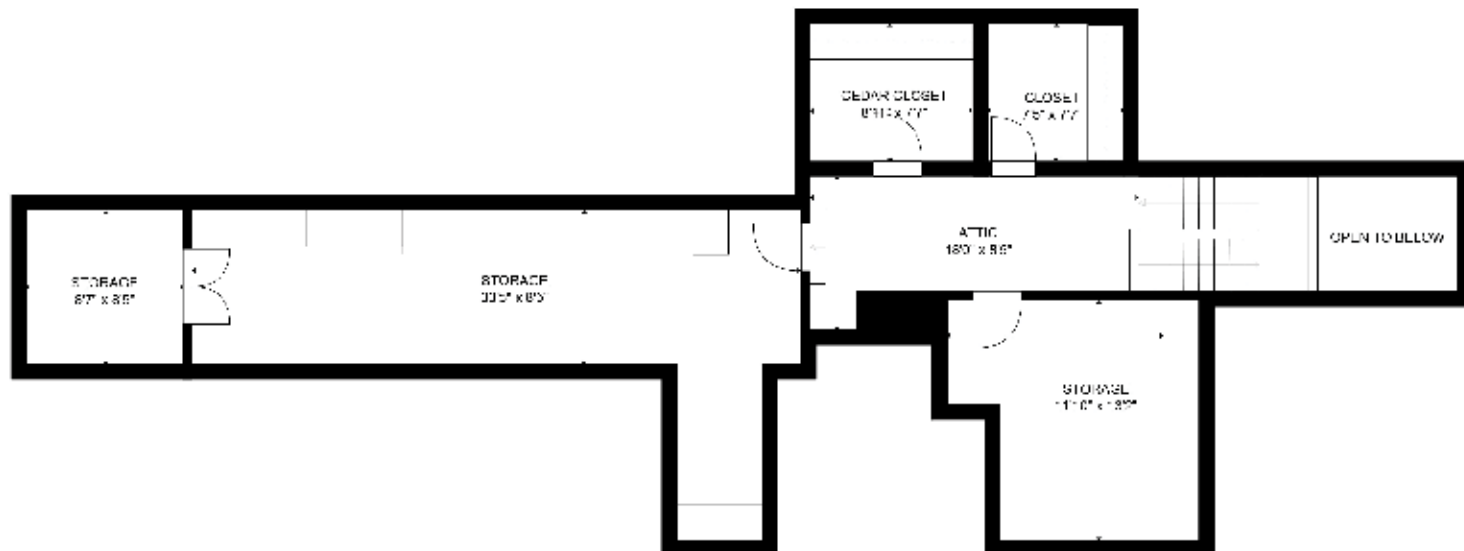












**GROSS INTERNAL AREA**

FLOOR 1: 311 sq. ft., FLOOR 2: 210 sq. ft.  
 FLOOR 3: 2833 sq. ft., FLOOR 4: 5473 sq. ft.  
 FLOOR 5: 1209 sq. ft., FLOOR 6: 5411 sq. ft.  
 EXCLUDED AREAS: DECK 2689 sq. ft.  
 ATTIC 1851 sq. ft., GARAGE 221 sq. ft.  
 BALCONY 129 sq. ft.

TOTAL: 12876 sq. ft.

SIZES AND DIMENSIONS ARE APPROXIMATE. SEE PLAN FOR DETAILS.



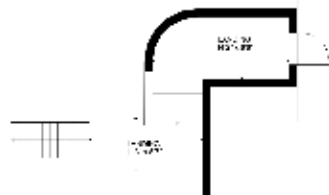
**GROSS INTERNAL AREA**

FLOOR 1: 1000 sq. ft., FLOOR 2: 2100 sq. ft.  
 FLOOR 3: 2833 sq. ft., FLOOR 4: 5473 sq. ft.  
 FLOOR 5: 1200 sq. ft., FLOOR 6: 811 sq. ft.  
 EXCLUDED AREAS: DECK: 2085 sq. ft.  
 PATIO: 1851 sq. ft., GARAGE: 200 sq. ft.  
 BALCONY: 120 sq. ft.  
 TOTAL: 12963 sq. ft.

SIZES AND DIMENSIONS ARE APPROXIMATE, ALL CALL FOR COPY



07.00



GROSS INTERNAL AREA  
FLOOR 1: 310 sq. ft., FLOOR 2: 210 sq. ft.  
FLOOR 3: 2833 sq. ft., FLOOR 4: 5473 sq. ft.  
FLOOR 5: 1209 sq. ft., FLOOR 6: 811 sq. ft.  
EXCLUDED AREAS: DECK 2089 sq. ft.  
PATIO 1151 sq. ft., GARAGE 1 272 sq. ft.  
BALCONY 129 sq. ft.  
TOTAL 12876 sq. ft.

DATE AND DIM. INDICARE APPROXIMA E, AD DA 1997/04/01

SB

*Hubble  
Bisbee*

---

CHRISTIE'S  
INTERNATIONAL REAL ESTATE

---

GREEN SPRING STATION

2330 W Joppa Road, Suite 104  
Lutherville, MD 21093  
410-321-1411



---

KAREN HUBBLE BISBEE

Principal, Associate Broker, ABR, GRI  
[Karen@HubbleBisbee.com](mailto:Karen@HubbleBisbee.com)  
443-838-0438

[www.HubbleBisbee.com](http://www.HubbleBisbee.com)

Green Spring Station | 410-321-1411

