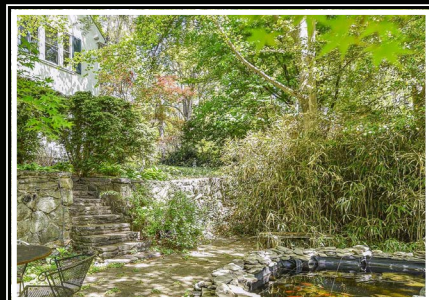
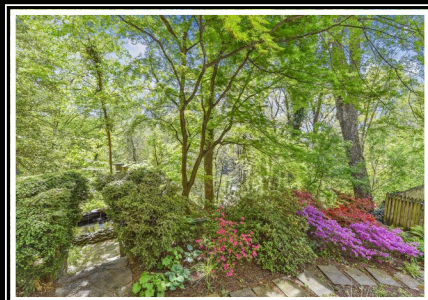
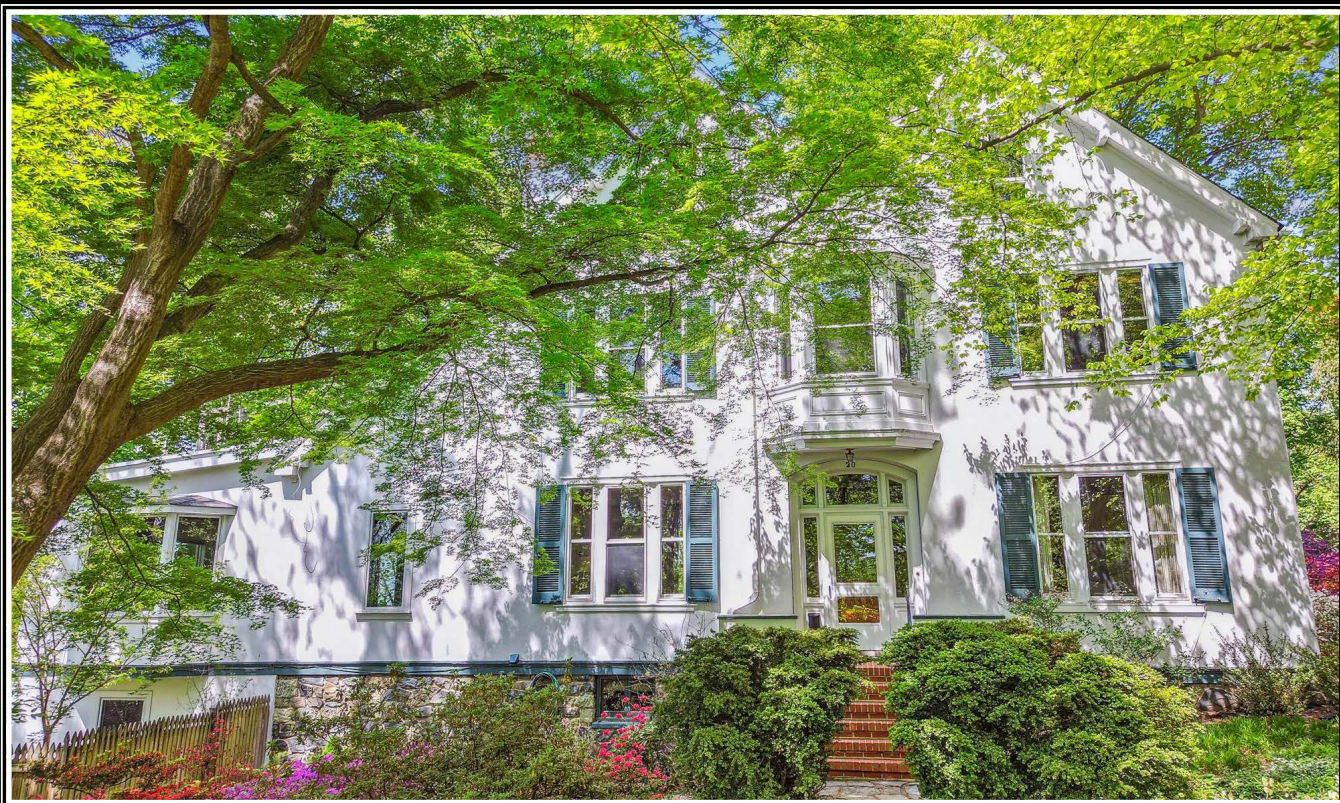


*Hubble  
Bisbee*

CHRISTIE'S  
INTERNATIONAL REAL ESTATE



20 MERRYMOUNT ROAD

ROLAND PARK

GREEN SPRING STATION

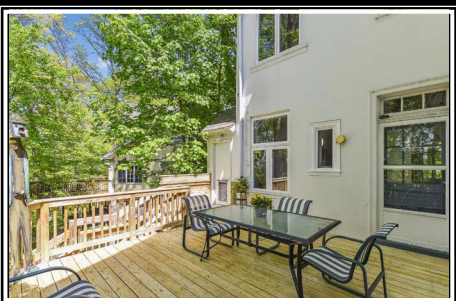
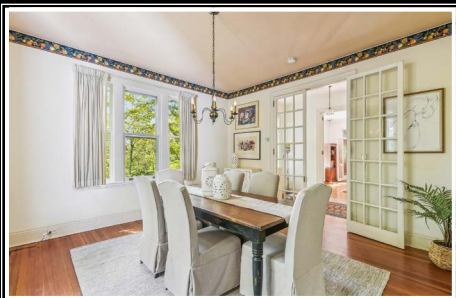
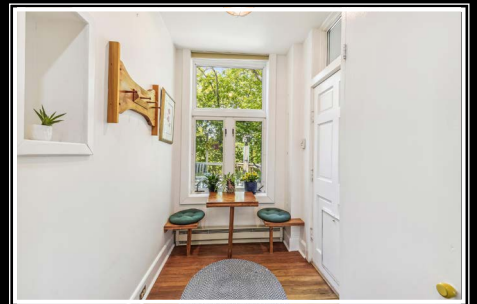
2330 W Joppa Road, Suite 104  
Lutherville, MD 21093  
410-321-1411

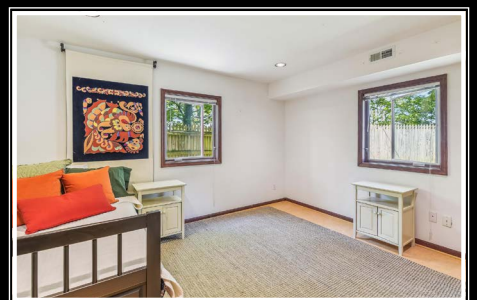
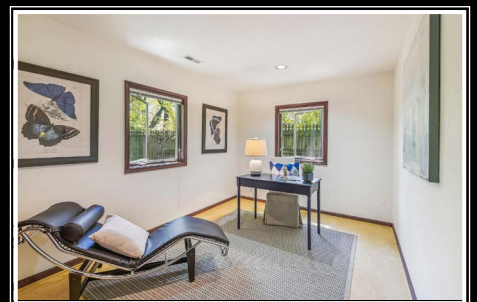


LYNN PLACK

Realtor®  
LynnPlack@HubbleBisbee.com  
410-340-2939

WWW.HUBBLEBISBEE.COM





## FOYER

- Paneled entry door with window, arched transom and sidelights
- Heart pine flooring
- Open pine staircase with hardwood handrails and painted spindles
- Mirrored door to walk-in closet with exit door to Deck and Powder Room with ceramic tile floor, corner sink and window
- Under-stair closet
- Track lighting
- Glass globe pendant light from Bellagio Italy
- Access to Butler's Pantry
- Oversize French doors to Living Room and Dining Room

## LIVING ROOM

- Heart pine flooring
- Wood burning fireplace with colonial mantel, terra cotta tile surround and hearth, glass doors
- Custom built-in oak bookcases with base cabinets flanking window
- Triple window
- Window between bookcases
- Two sets of French doors with transoms to Family Room

## FAMILY ROOM

- Cherry hardwood flooring
- Four sets of full-height built-in cherry storage cabinets
- Four sets of full-height built-in cherry bookcases with base cabinets
- Wall of windows with mini-blinds
- Two bay windows with mini-blinds and built-in window seat/storage benches
- Two additional windows with mini-blinds
- Crown molding
- Two free-standing columns
- Recessed lighting and track lighting

## DINING ROOM

- Heart pine flooring
- Two triple windows
- Six-light chandelier
- Access to Butler's Pantry

## BUTLER'S PANTRY

- Heart pine flooring
- Vintage Dutch pantry cabinet with glass door upper cabinet and base cabinet
- Vintage glass door wall cabinets
- Laminated counter with stainless steel prep sink
- Double window
- Art glass wall sconce light
- Concealed staircase to Lower Level
- Access to Kitchen

## KITCHEN

- Heart Pine flooring
- Wood wall cabinets to ceiling, pantry cabinet and base cabinets including lazy-Susan cabinet
- Soapstone counters
- Ceramic tile backsplashes
- Whirlpool stainless steel French door refrigerator with water-ice dispenser
- KitchenAid stainless steel electric range with downdraft vent
- Bosch stainless steel dishwasher
- Stainless steel undermount sink with Insinkerator disposal
- Breakfast area with built-in table and 2 bench seats, double window with transom and pleated shade, wall niche/mail cubby and 2 exit doors
- Triple window and additional window with mini-blinds
- Bookcase
- Storage closet
- Back staircase to 2nd Floor
- Recessed lighting
- Under-cabinet lighting
- Copper ceiling light and copper pendant light

## SECOND FLOOR

### HALL

- Landing for main staircase- open staircase continues to 3rd Floor
- Mid-landing with window and back stairs to Kitchen
- Heart pine flooring
- Built-in white painted bookcase with base cabinets
- Linen closet
- Ceiling light

## PRIMARY SUITE

- Private hall entry with wall of mirrored door closets, access to Primary Bath and open flow to Primary Bedroom

## PRIMARY BEDROOM

- Heart pine flooring
- Fireplace with traditional wood mantel and L. Lange & Co stove insert
- Triple window with mini-blinds
- Crown molding
- Large custom fitted walk-in closet
- Vestibule with French doors to Spa Bath, shelved closet and built-in wardrobe cabinetry
- Recessed lighting
- Access to Sitting Room

## PRIMARY SITTING ROOM

- Heart pine flooring
- Bay window with mini-blind and built-in window seat
- Wall mounted desk with shelving above
- Track lighting

## PRIMARY BATH

- Marble floor, shower stall walls and spa tub platform
- Pedestal sink with oversized mirrored medicine cabinet, overhead lighting and adjacent open shelving cabinet
- Glass-enclosed shower stall with additional handheld shower
- Built-in dressing table with marble top, plate glass mirrors, overhead lighting and vertical lighting
- Wall mounted manually operated heater
- Glazed door to Spa Bath encased in greenhouse window with cedar floor, walls and seating alcove, built-in bench seating, large Kohler jetted spa tub and window access to rooftop cat enclosure

## BEDROOM 2

- Heart pine flooring
- Triple window and additional window with woven wood shades
- Crown molding
- Two closets
- Track lighting

## BEDROOM 3

- Heart pine flooring
- Two windows with pleated shades
- Built-in desk with bookcases above
- Crown molding
- Closet
- Art glass pendant light
- Access to Laundry Room

## HALL BATH

- Vinyl tile flooring
- Vanity with solid surface top and seamless sink, mirrored medicine cabinet and overhead lighting
- Glass enclosed shower stall
- Open shelving cabinet
- Window
- Exhaust fan
- Access to Laundry Room

## LAUNDRY ROOM

- Dual access
- Marmoleum flooring
- Double window
- Utility sink
- Wall mounted shelving
- Built-in ironing board cabinet
- LG stainless steel stacked washer and dryer
- Fluorescent light ceiling panel

## THIRD FLOOR

### HALL

- Landing for staircase with banister overlook
- Double window on mid-landing
- Ceiling light

## RECREATION ROOM

- Wall-to-wall carpeting- 2023
- Knotty pine encased ceiling beams
- Wood burning fireplace with slate surround and hearth, glass doors
- Five floor-length windows with room darkening shades
- Two triangular windows with room darkening shades
- Three skylights with room darkening shades

- Wall of custom knotty pine built-in touch-latch cabinetry
- Wall mounted smart TV
- Track lighting
- Ceiling attic access

## HALL BATH

- Vinyl tile flooring
- Wall mounted sink with mirrored medicine cabinet flanked with wall sconce lighting
- Footed soaking tub with French shower
- Open linen shelving
- Walk-in closet
- Window
- Ceiling light

## LOWER LEVEL

### APARTMENT

#### LIVING ROOM

- Double door entry
- Marmoleum non-toxic sustainable flooring
- Recessed lighting
- Access to Basement
- Access to Bath
- Access to Hall to Bedrooms

#### BEDROOM 1

- Marmoleum flooring
- Two windows with mini-blinds
- Double closet
- Recessed lighting

#### BEDROOM 2

- Marmoleum flooring
- Two windows with mini-blinds
- Double closet
- Recessed lighting
- Utility closet with Carrier heat pump unit (for Apartment and Family Room)- 2016

#### BATH

- Vinyl tile flooring in Italian mosaic pattern
- Pedestal sink with mirrored medicine cabinet and overhead lighting
- Glass enclosed shower stall
- Closet with shelving and sump pump
- Recessed light
- Exhaust fan

#### BASEMENT

- Staircase access from Butler's Pantry
- Unfinished
- Stone foundation walls
- Studio Room with stone walls, cork flooring, transom window and manually operated electric baseboard heat
- French drain system
- Sump pump
- Columbia oil-fired boiler
- Bradford White gas-fired water heater
- Water treatment system
- Electric service panels
- Four windows
- Storage shelving
- Access to Apartment

## EXTERIOR

- Aerie setting with incredible seasonal views
- Stucco with stone foundations
- Slate roof with rubber membrane roofing
- Flagstone walkways and stone garden walls
- Brick front porch with stucco knee-walls
- Stone steps to stone patio terrace with fishpond
- Fenced yard
- Wood deck with access from Kitchen
- Parking pad
- Buried 1000 gallon oil tank- passed inspection by Tankmasters, Inc. 2/15/2023, document included in disclosures

*Hubble  
Bisbee*

GREEN SPRING  
STATION  
410-321-1411

CHRISTIE'S  
INTERNATIONAL REAL ESTATE

