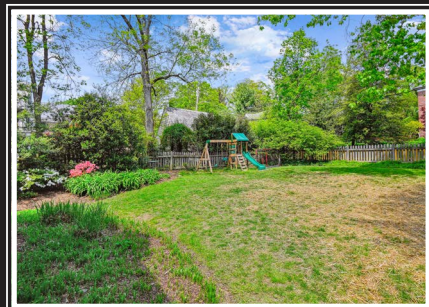


*Hubble
Bisbee*

CHRISTIE'S
INTERNATIONAL REAL ESTATE



210 GOODALE ROAD
HOMELAND

GREEN SPRING STATION

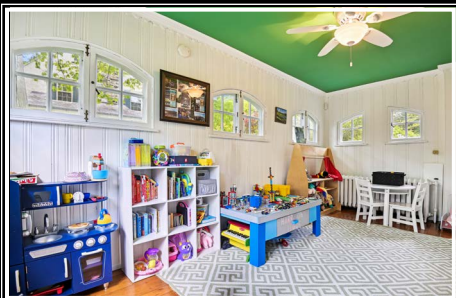
2330 W Joppa Road, Suite 104
Lutherville, MD 21093
410-321-1411

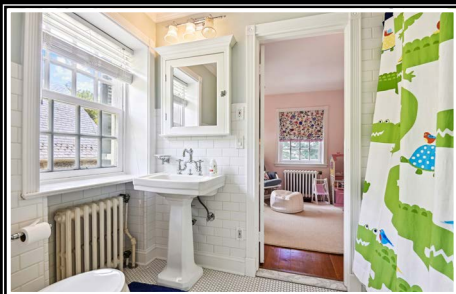
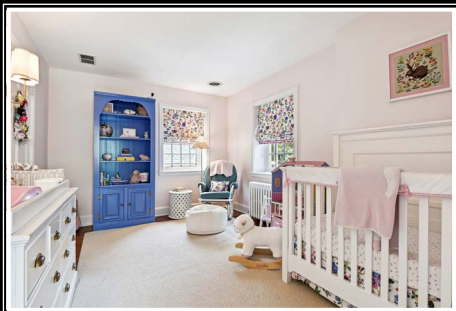


LYNN PLACK

Realtor®
LynnPlack@HubbleBisbee.com
410-340-2939

WWW.HUBBLEBISBEE.COM





FOYER 7' X 5'

- Paneled entry door with bottle-glass transom
- Slate floor
- Powder Room with slate floor, marble wainscot pendant lantern and window
- Crown molding
- Modern wall sconce light
- Step-up through cased portal to Hall

HALL 12' X 7'

- Random width pegged hardwood flooring
- Open oak staircase with hardwood handrails, carpet runner and window
- Crown molding
- Closet
- Brass pendant light
- Cased portal to Kitchen
- Step-down through wide cased portal to Living Room

LIVING ROOM 25' X 14'

- Random width pegged hardwood flooring
- Beamed ceiling trimmed out with crown molding
- Wood burning fireplace on beaded wood paneled wall with colonial mantel, brick surround and hearth
- Three windows with woven shades and custom window treatments
- Shelved closet with storage bin above
- Recessed lighting
- Built-in ceiling speakers
- Step-up through double doors to Dining Room
- Dutch door to Study
- Wall mounted TV excluded

STUDY 16' X 9'

- Beaded wood paneled walls
- Two sets of built-in bookcases with base cabinets
- Three arched double casement windows and 4 additional windows
- Exit door with 9-pane window
- Crown molding
- Ceiling fan

DINING ROOM 14' X 13'

- Random width pegged hardwood flooring
- Three windows with woven shades
- Crown molding
- Chair rail with wainscot moldings
- Six-light brass and beaded glass chandelier
- Open flow to Kitchen

KITCHEN 16' X 14'

- Random width pegged hardwood flooring
- Fabuwood recess-panel wood cabinetry in white finish including gray finish island/ breakfast bar, pantry cabinets, glass-door cabinets, pot-pan drawers, lazy-Susan base cabinets, custom range hood enclosure, roll-out trays, tray cabinets, pull-out trash/recycle bins, dovetailed drawers, soft close cabinets/drawers and matching crown trim
- Matching wet bar with stainless steel undermount prep sink and KitchenAid wine cooler
- Quartz counters
- Subway tile backsplashes
- KitchenAid stainless steel French door refrigerator
- Monogram stainless steel commercial grade 6-burner gas range and range hood exhaust
- Sharp stainless steel built-in microwave drawer
- KitchenAid stainless steel dishwasher
- Ceramic farmhouse sink with Insinkerator disposal
- Pot-filler faucet at range
- Three windows with woven shades
- Crown molding
- Recessed lighting
- Built-in speakers
- Two brass pendant lights above island
- Concealed staircase to Lower Level
- Door with 9-pane window to Mudroom

MUDROOM

- Concrete floor
- Stone accent walls- originally exterior walls
- Custom built-in mudroom cabinetry
- Two windows
- Exit door with 9-pane window
- Modern ceiling light
- Steps adjoining interior staircase to Lower Level

SECOND FLOOR

HALL

- Landing for staircase- open staircase continues to 3rd Floor
- Random width pegged hardwood flooring
- Installed carpet runner- same as staircases
- Window with plantation blind
- Linen closet
- Drum ceiling light

PRIMARY BEDROOM 16' X 15'

- Vestibule entry with ceiling light, custom fitted walk-in closet and additional closet
- Random width pegged hardwood flooring
- Custom built-in wardrobe cabinetry including storage cabinetry and drawers
- Five windows with plantation blinds
- Three wall sconce lights
- Ceiling fan
- Wall mounted TV excluded

PRIMARY BATH

- Marble basketweave pattern floor and shower stall floor
- Beadboard wainscot
- Ceramic console sink with wood mirror-door medicine cabinet and overhead lighting
- Glass enclosed marble shower stall with rainshower head, additional handheld shower and built-in seat
- Linen cabinet
- Window with plantation shutters and custom Roman shade
- Recessed lighting
- Exhaust fan

BEDROOM 2 15' X 14'

- Random width pegged hardwood flooring
- Three windows with plantation blinds
- Built-up crown molding
- Paneled wainscot
- Custom fitted closet
- Two wall sconce lights
- Ceiling fan with light
- Access to Shared Bath

BEDROOM 3 14' X 10'

- Random width pegged hardwood flooring
- Two windows with custom Roman shades and blinds
- Custom fitted closet
- Two wall sconce lights with shades
- Access to Shared Bath

SHARED BATH

- Ceramic hex-tile floor
- Subway tile wainscot and tub surround
- Pedestal sink with wood mirror-door medicine cabinet and overhead lighting
- Aerator soaking tub with shower and recessed light
- Wall mounted towel racks/shelves
- Window with plantation blind
- Crown molding
- Exhaust fan

THIRD FLOOR

HALL

- Landing for staircase with window
- Wall-to-wall carpeting
- Cedar closet
- Knee-wall storage closets

- Ceiling light

BEDROOM 4 14' X 12'

- Wall-to-wall carpeting
- Window in dormer recess
- Two additional windows with plantation blinds
- Closet with access to attic with CAC unit
- Ceiling light

BEDROOM 5 9' X 9'

- Wall-to-wall carpeting
- Window in dormer recess and additional window
- Cedar closet
- Ceiling fan with light
- Wall mounted plate glass mirror

HALL BATH

- Ceramic tile floor
- Beadboard wainscot
- Pedestal sink with wood mirror-door medicine cabinet and overhead lighting
- Glass-enclosed ceramic tile shower stall with built-in seat
- Window in dormer recess with plantation blind

LOWER LEVEL

- Stone foundation walls

RECREATION ROOM 25' X 19' (IRREGULAR)

- Carpeted staircase access from Kitchen
- Laminate flooring
- Four windows
- Powder Room with ceramic tile floor, pedestal sink and window
- Built-in shelving
- Double closet with shelving
- Recessed lighting
- Under-stair storage area

UTILITY ROOM

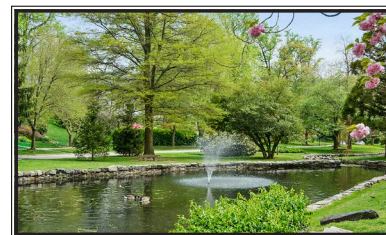
- Double door entry
- Utica gas-fired boiler
- Bradford White gas-fired water heater

LAUNDRY/STORAGE ROOM

- Ceramic tile and laminate flooring
- Utility sink
- LG washer and dryer
- Sump pump
- Access to crawl space with CAC unit

EXTERIOR

- Stone Cotswold style home with wood siding
- Slate roof
- Flagstone walkway to main entry
- Stone garden walls with wood gate to back
- Fenced back yard
- Flagstone patio
- Stone 2-car garage matching house with automatic door opener and alley access
- Back yard playset



Hubble Bisbee

CHRISTIE'S
INTERNATIONAL REAL ESTATE

GREEN SPRING
STATION
410-321-1411

