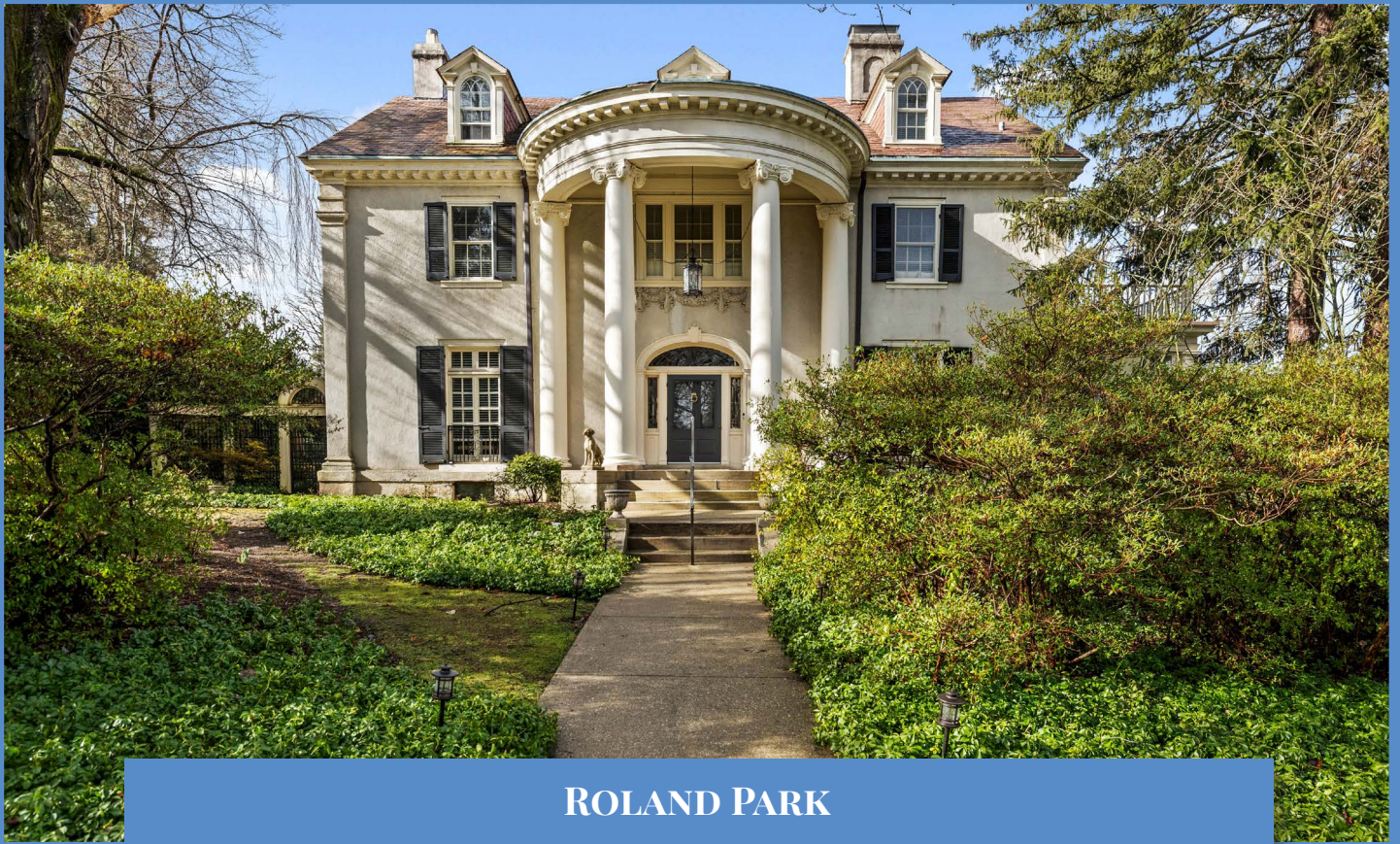


*Hubble  
Bisbee*

CHRISTIE'S  
INTERNATIONAL REAL ESTATE



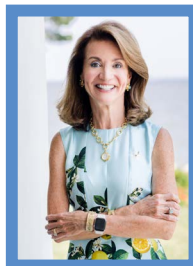
ROLAND PARK  
210 GOODWOOD GARDENS



LOCATIONS

2330 W Joppa Road, Suite 104  
Lutherville, MD 21093

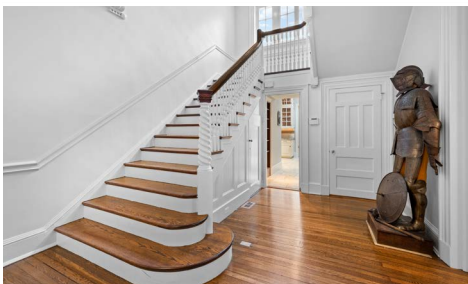
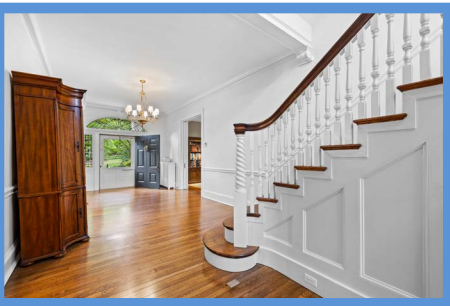
181 Harry S Truman Pkwy Ste 200  
Annapolis, MD 21401



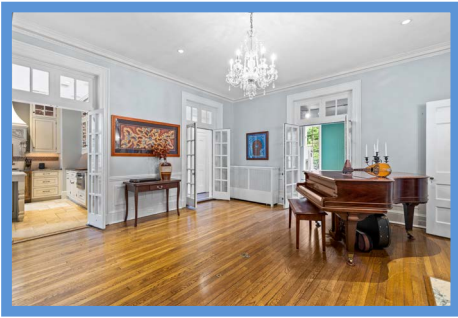
KAREN HUBBLE BISBEE

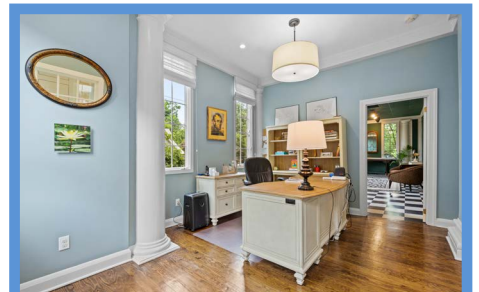
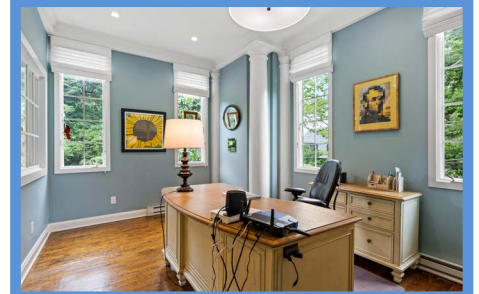
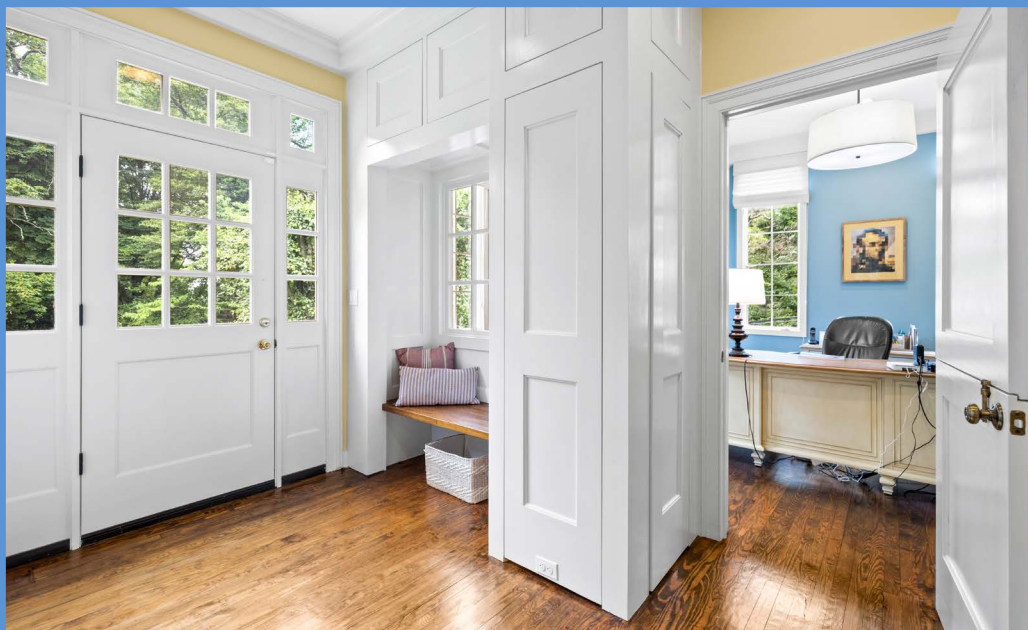
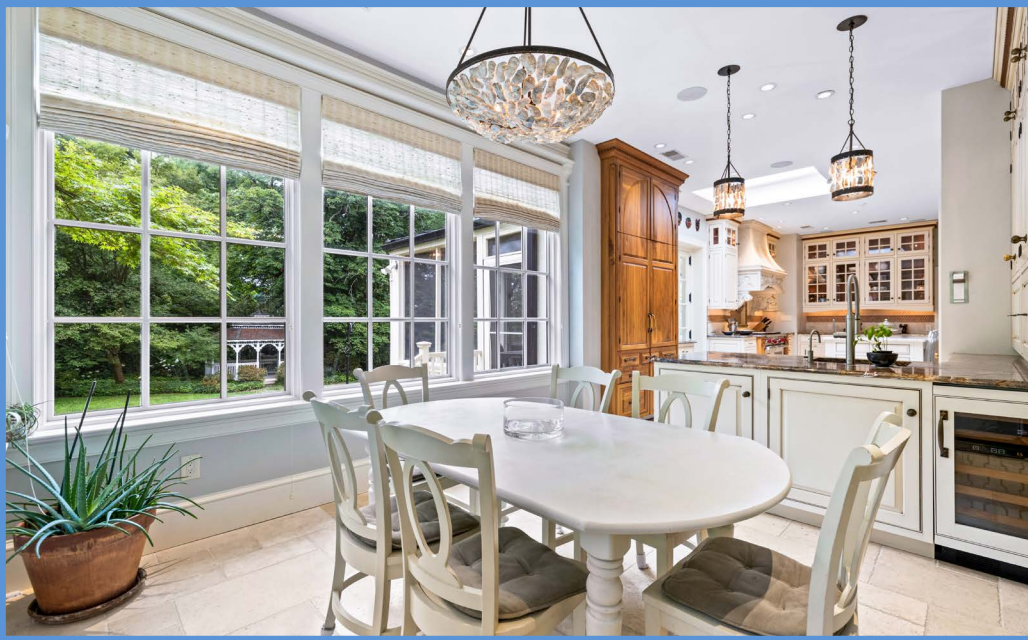
Principal, Associate Broker, ABR, GRI  
Karen@HubbleBisbee.com  
443-838-0438 (Mobile)  
410-321-1411 (Office)

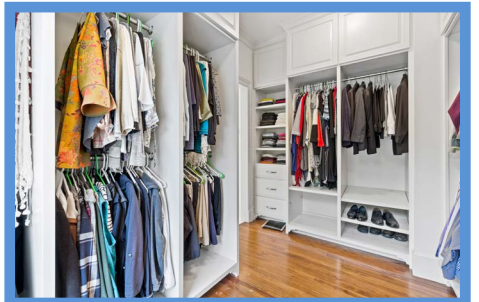
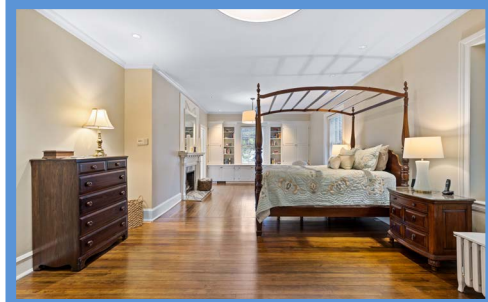
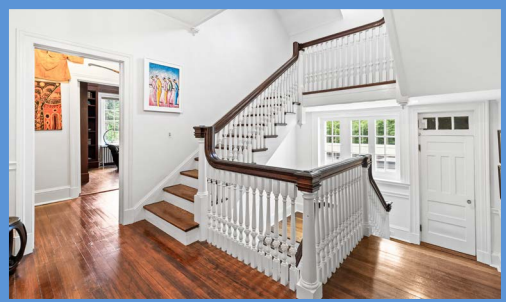
WWW.HUBBLEBISBEE.COM | (410) 321-1411 (OFFICE) | 













## FOYER 29'9" X 12'0"

- Paneled entry door with leaded glass sidelights and elliptical transom, full-view storm door
- Hardwood flooring
- Open oak staircase with hardwood handrails and turned spindles and newel posts
- Powder Room with hardwood floor, pedestal sink, oval mirror and overhead lighting
- Built-up crown molding
- Bracketed beam at staircase
- Chair rail
- Brass Neo-classical 8-light chandelier with shades
- Door to Kitchen
- Double pocket doors to Living Room, Dining Room and Family Room

## LIVING ROOM 34'0" X 18'8"

- Hardwood flooring
- Gas fireplace with Georgian mantel, marble surround and hearth
- French doors with transom and exterior wrought iron railing
- Two windows with plantation blinds
- Built-up dentil crown molding
- Recessed lighting
- Samsung wall mounted TV
- Built-in wall speakers
- Double doors to Kitchen

## FAMILY ROOM 18'8" X 15'8"

- Hardwood flooring
- Gas fireplace with Georgian mantel, marble surround and hearth
- Custom built-in mahogany bookcase with base cabinetry and safe
- French doors with transom and exterior wrought iron railing
- Matching French doors to Sun Porch
- Crown molding
- Recessed lighting
- Bronze finish 12-light chandelier
- Door to Dining Room

## DINING ROOM 18'8" X 17'6"

- Hardwood flooring
- Wood burning fireplace with Georgian mantel, marble surround and hearth
- Built-up crown molding
- Chair rail with wainscot moldings
- Recessed lighting
- Crystal 6-light chandelier
- Two crystal double wall sconce lights
- French doors with transom to Sun Porch
- French doors with transom to Mudroom
- Swinging French doors with transom to Kitchen

## KITCHEN 39'7" X 12'8"

- Travertine marble floor with radiant heat
- Raised-panel custom wood cabinetry in antique white finish and contrasting walnut including island/breakfast

- bar, peninsula, illuminated glass-door cabinets, upper tier illuminated glass-door cabinets, 2 appliance garages, roll-out trays, tray cabinets, pot-pan drawers, pull-out trash/recycle bins, dovetailed drawers and matching crown trim
- Marble and granite counters
- Marble subway tile backsplashes with glass tile accents/borders
- Cast stone bracketed range hood with exhaust fan and surface lighting
- Walnut 'armoire' cabinet with Sub-Zero French door refrigerator, 2 refrigerator drawers, 2 freezer drawers, all with matching front panels and 2 touch-latch upper cabinets
- Wolf stainless steel 6-burner dual-fuel gas range with 2 electric ovens and griddle
- Sharp stainless steel microwave drawer
- Fisher Paykel 2-drawer dishwasher with matching front panels
- Franke oversized stainless steel undermount sink with basin rack, and Insinkerator disposal
- Stainless steel undermount sink on peninsula with basin rack and Insinkerator disposal
- Large breakfast area in 2 window walls including glazed exit door with transom
- Skylight
- Recessed lighting
- Under-cabinet lighting
- Built-in ceiling speakers
- Custom shell chandelier and 2 matching pendant lights above peninsula
- Vestibule to Foyer with 2 custom built-in bookcases- 1 swings in to reveal basement staircase
- French doors to Screened Porch
- Double doors to Living Room
- Swinging door to Mudroom

## MUDROOM

- Pine flooring
- Double closet with touch-latch doors and 2 additional touch-latch closets
- Paneled recess with built-in pine bench and interiors window to Office
- Exit door with sidelights and transom to bluestone steps to Yard
- Built-up crown molding
- Recessed lighting
- French doors to Dining Room
- Dutch door to Office

## OFFICE

- Pine flooring
- Four windows with woven shades
- Interior window to Mudroom
- Built-up crown molding
- Classic pilasters and column
- Recessed lighting
- Drum pendant light
- Electric baseboard heat
- Access to Sun Porch

## SUN PORCH 29'10" X 11'6"

- Black and white checkerboard pattern vinyl tile flooring

- Eight windows
- Built-up crown molding
- Classic pilasters
- Track lighting
- Electric baseboard heat
- French doors to Dining Room and Family Room

## SECOND FLOOR

### HALL

- Landing for main staircase with triple window on mid-landing, staircase continues to 3rd Floor
- Heart pine flooring
- Crown molding
- Chair rail
- Utility closet with Carrier HVAC unit
- Brass pendant light
- Bedroom Passage with cedar closet and access to Bedrooms 2 and 3 and Hall Bath
- Access to Laundry Room
- Access to Primary Bedroom

### PRIMARY BEDROOM

#### 31'11" X 15'8"

- Heart pine flooring
- Gas fireplace with Georgian mantel, framed over mantel mirror, marble surround and hearth
- Wall of custom built-in cabinetry surrounding window with bookcases, base cabinets and upper cabinets
- Triple window and 2 additional windows with plantation blinds
- Crown molding
- Closet and additional closet shared with Bedroom 2
- Recessed lighting
- Two drum pendant lights

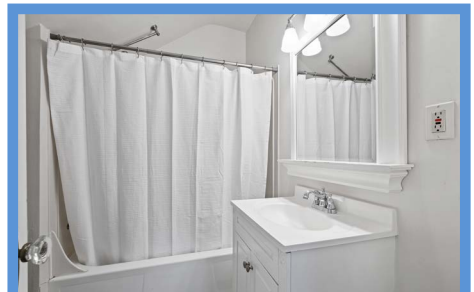
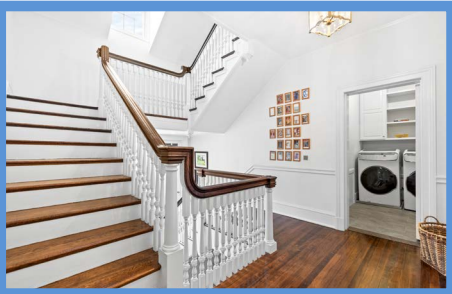
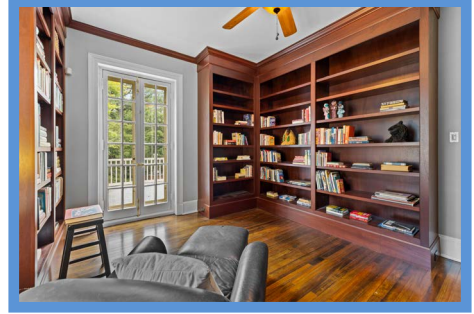
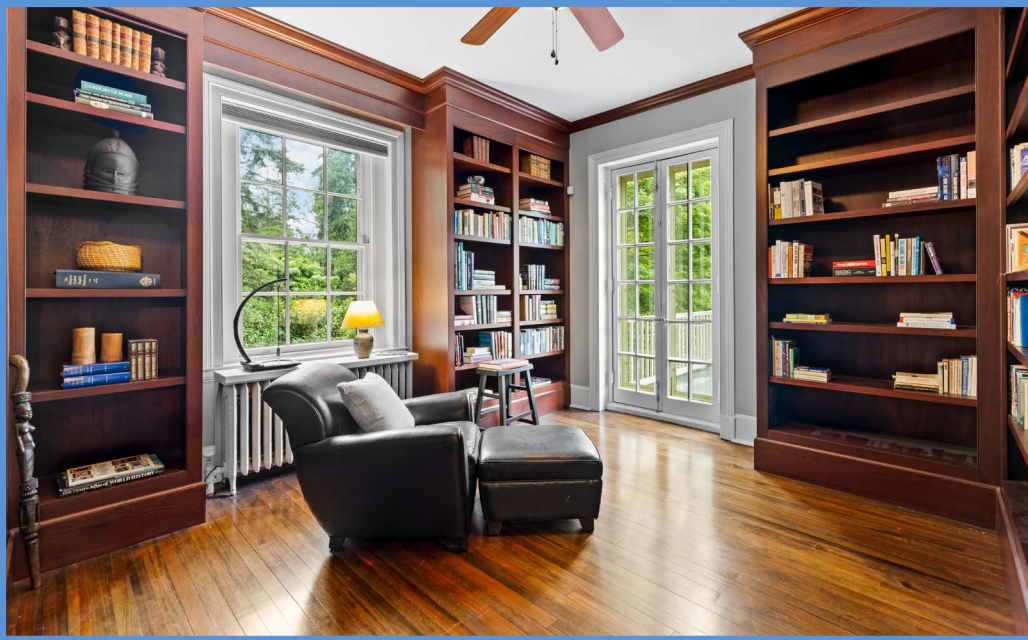
### PRIMARY BATH

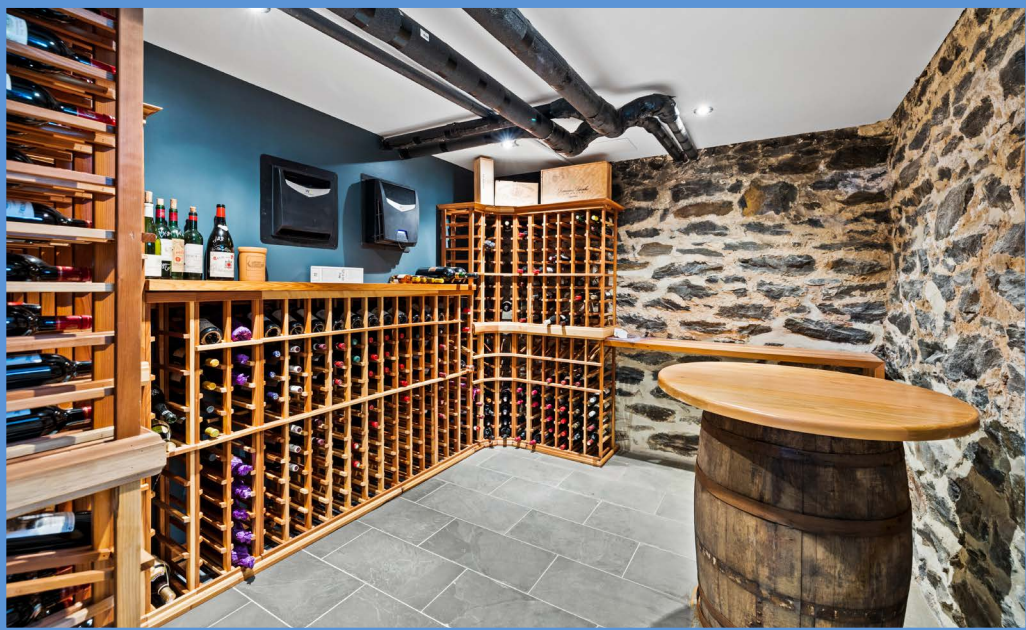
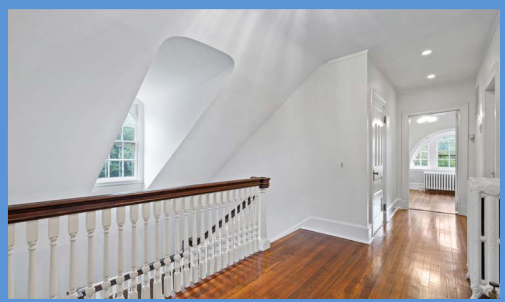
- Marble floor with marble mosaic central panel and radiant heat
- Wide custom double vanity with marble top, Kohler undermount sinks, oval mirrors and 4 wall sconce lights with shades
- Free standing soaking tub in cased archway with marble wall with marble mosaic central panel
- Glass enclosed marble shower stall with additional handheld shower and 2 wall niches
- Sliding glass door to water closet with marble walls, additional shower stall access and window
- Two windows
- Built-up crown molding
- Access to custom fitted Dressing Room with wardrobe cabinetry and window
- Recessed lighting

### BEDROOM 2 16'10" X 13'6"

- Heart pine flooring
- Two windows with plantation blinds
- Crown molding







- Closet and additional closet shared with Primary Bedroom
- Ceiling fan with lighting
- Private Bath

### BATH

- Ceramic hex-tile floor
- Pedestal sink with mirrored medicine cabinet and overhead lighting
- Tub/shower combination with subway tile surround
- Beadboard wainscot
- Window with frosted glass

### BEDROOM 3 14'5" X 12'10"

- Heart pine flooring
- Extensive custom built-in floor-length mahogany bookcases
- French doors to rooftop
- Window with pleated shade
- Crown molding
- Closet with built-in shelving
- Ceiling fan with light

### HALL BATH

- Ceramic tile floor and tub surround
- Ceramic console sink with framed mirror and overhead lighting
- Soaking tub with handheld shower
- Beadboard wainscot with shelf above sink
- Window with bamboo shade
- Crown molding

### LAUNDRY ROOM

- Ceramic tile floor
- Touch-latch linen closet
- Wall cabinets with open shelving
- Samsung washer and dryer
- Crown molding
- Ceiling light

## THIRD FLOOR

### HALL

- Landing for staircase with banister overlook to Main Level
- Heart pine flooring
- Arched window above staircase in barrel-vaulted dormer
- Two walk-in cedar closets
- Linen closet
- Brass ceiling light
- Attic access ceiling panel

### BEDROOM 4 18'9" X 15'3"

- Heart pine flooring
- Two arched windows in barrel-vaulted dormers with plantation blinds
- Two additional windows with plantation blinds
- Double closet
- Ceiling fan with lighting
- Private Bath

### BATH

- Vinyl tile flooring
- Vanity with framed mirror/shelf and overhead lighting
- Tub/shower combination
- Exhaust fan

### BEDROOM 5 17'6" X 10'11"

- Heart pine flooring
- Arched window in barrel-vaulted dormer with plantation blind and built-in window seat bench
- Half-round window (shared with Bath)
- Walk-in closet
- Ceiling fan with lighting
- Attic access ceiling panel
- Private Bath

### BATH

- Divided
- Vinyl tile floor
- Vanity with framed mirror medicine cabinet, overhead light and casement window
- Shower stall
- Arched window in barrel-vaulted dormer with plantation blind and built-in window seat bench
- Ceiling light
- Exhaust fan

### BEDROOM 6 15'6" X 9'11"

- Heart pine flooring
- Arched window in barrel-vaulted dormer with plantation blind and built-in window seat bench
- Two built-in chest of drawer cabinets
- Ceiling light

## LOWER LEVEL

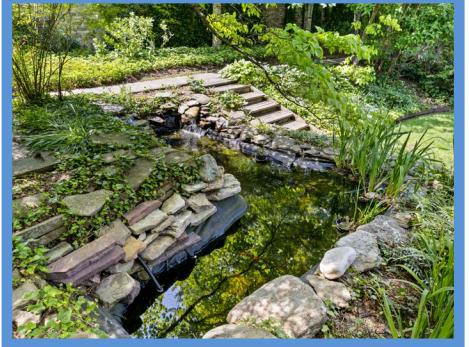
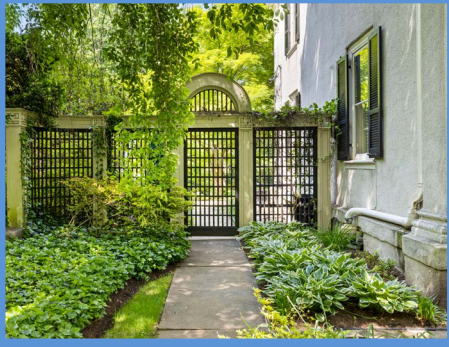
- Unfinished
- Several rooms and storage closets
- Stone and wood partition walls
- Burnham gas-fired boiler
- Carrier HVAC unit with Honeywell air cleaner
- AO Smith gas-fired water heater
- Electric service panels- electric surface throughout house re-wired
- Lutron lighting system for front porch and front walkway, Living Room, Family Room, Kitchen, Office, Primary Bedroom, Primary Bath, and Wine Room
- Audio cabinet for whole-house sound system- Apple TV, Linksys Routers and Ring alarm excluded
- Three utility sinks at double window
- Enclosed flush with window
- Base cabinets, wall cabinets and storage cabinets
- Two additional windows
- Exit door

### WINE ROOM

- Glazed entry door
- Climate controlled
- Ceramic tile floor
- Cedar wine racks
- Recessed lighting

## EXTERIOR

- Classic Georgian stucco over stone home with heavy dentil cornice and corner pilasters
- Vermont slate roof with copper gutters and downspouts
- Stone garden walls and entry posts from front sidewalk at street (entire block) including Oakdale Rd frontage
- Semi-circular 2-story portico at main entry with classic columns and terra cotta tile floor
- Rebuilt lattice work privacy fence in side yard with columns and gate to back yard
- Screened Porch (23' X 10') with wood flooring, area carpet, vaulted ceiling, 2 ceiling fans with lighting, 2 wall mounted gas-fired heating units, outdoor speakers, classic balustrade and steps to yard- access from Kitchen
- Two sets of bluestone steps to Yard (1 set from Mudroom)
- Garden gazebo with picnic table
- Circular cobblestone Patio with bluestone border and adjoining bluestone patio at stone Koi Pond with waterfall
- Professionally landscaped
- Exterior landscape lighting
- Stone garden walls and steps
- Detached 2-car Garage at Shadow Lane alley
- Wall mounted stone mosaic peacock excluded



*Hubble  
Bisbee*

**CHRISTIE'S**  
INTERNATIONAL REAL ESTATE

GREEN SPRING  
STATION  
410-321-1411

ANNAPOLIS  
410-321-1833

