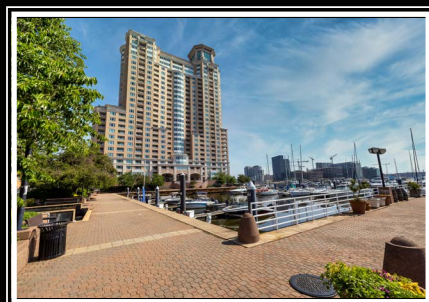
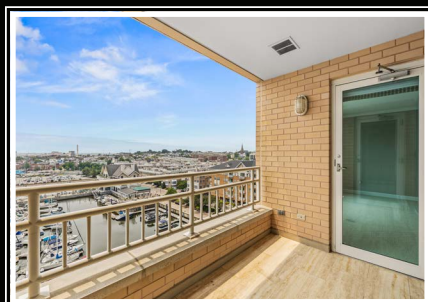


*Hubble
Bisbee*

CHRISTIE'S
INTERNATIONAL REAL ESTATE



100 HARBORVIEW DRIVE, UNIT 804

HARBORVIEW

GREEN SPRING STATION

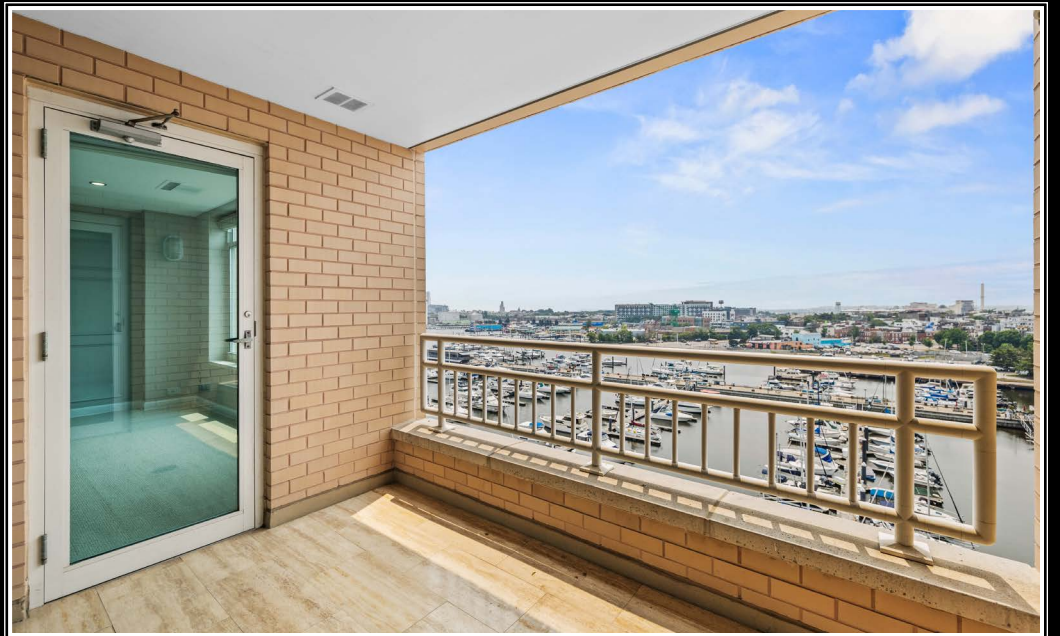
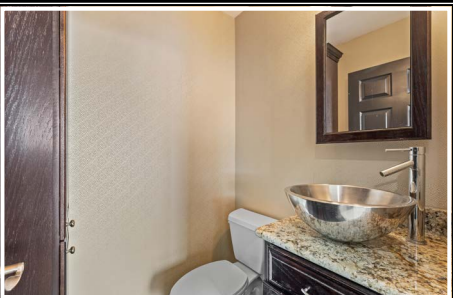
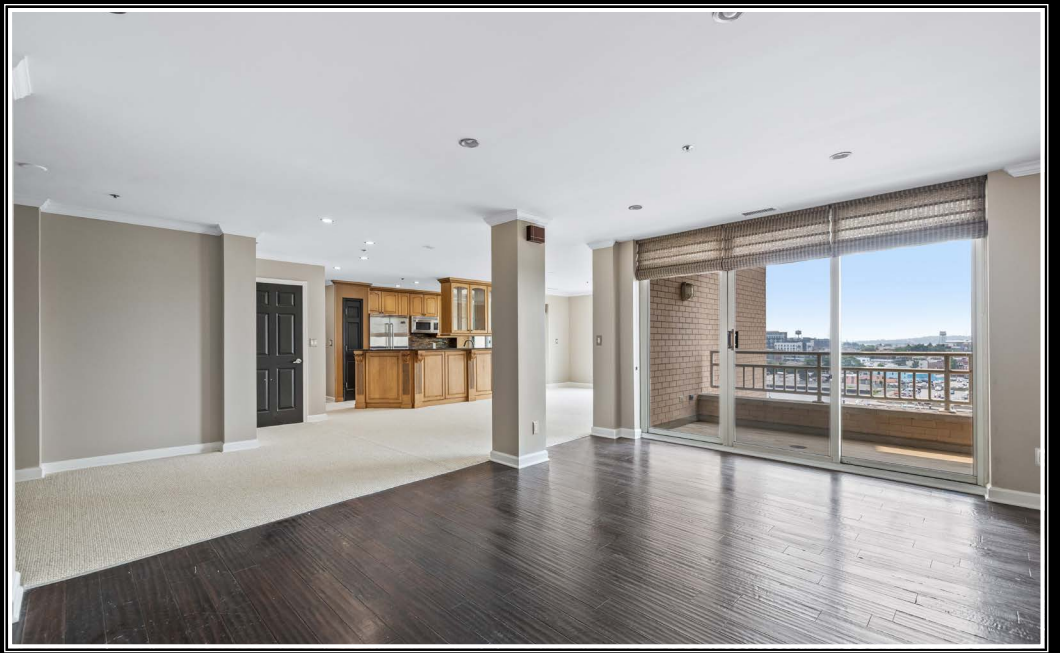
2330 W Joppa Road, Suite 104
Lutherville, MD 21093
410-321-1411

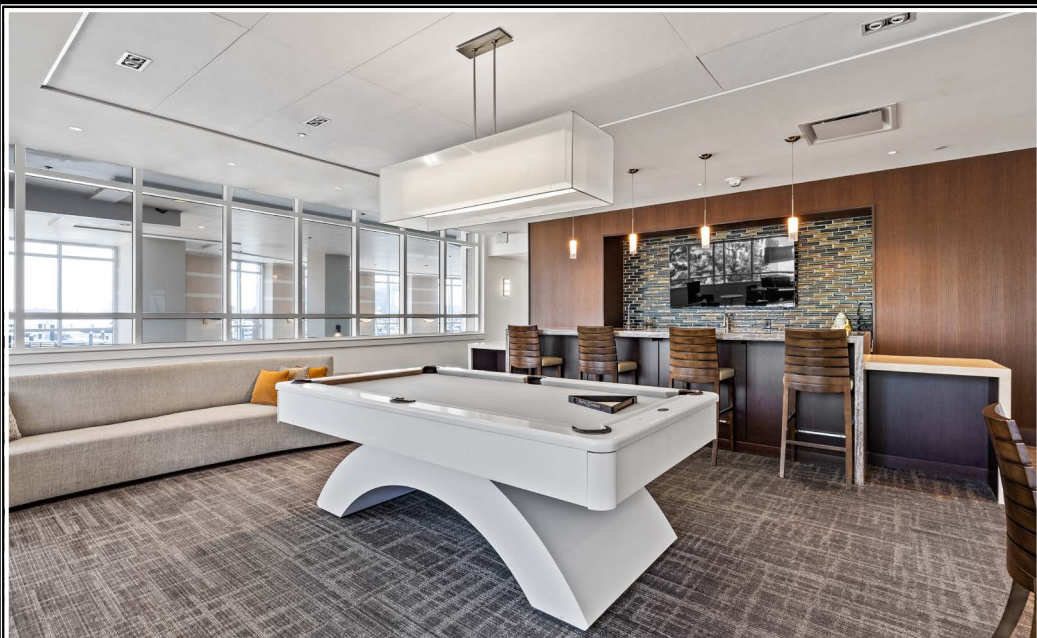
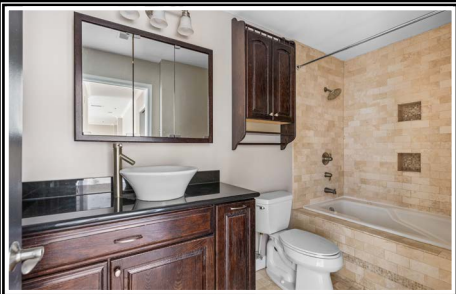
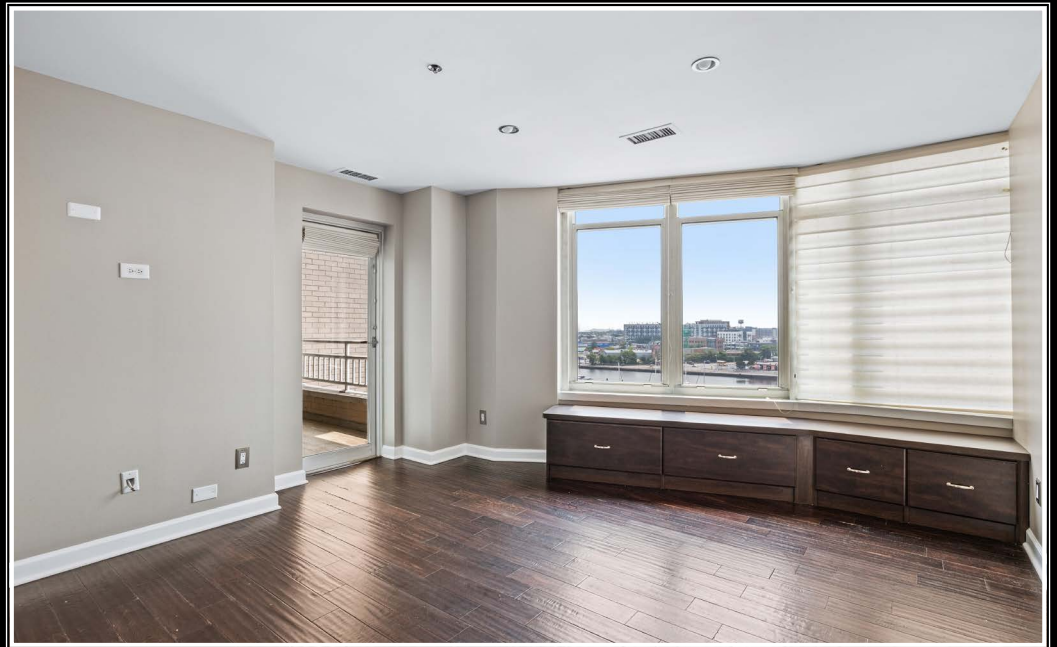
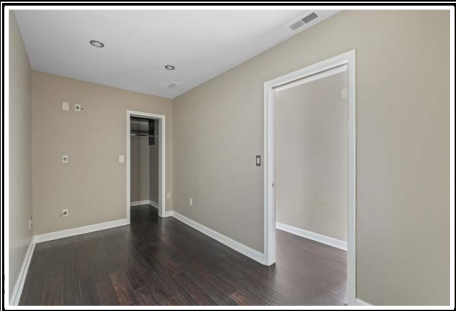


KEISHA MCCLAIN

Realtor®
KeishaMcClain@HubbleBisbee.com
443-414-2168

WWW.HUBBLEBISBEE.COM





FOYER 9'2" X 8'8"

- Double entry door
- Ebony hand-scraped engineered hardwood flooring
- Crown molding
- Flows to Living Room and Family Room

LIVING ROOM 25'4" X 17'7"

- Ebony hand-scraped engineered hardwood flooring
- Sliding glass doors to Deck with Roman shades
- Crown molding
- Recessed lighting
- Rough-in for wall mounted TV
- Flows to Bedroom Passage
- Open flow to Family Room

FAMILY ROOM 25'0" X 14'0"

- Wall-to-wall carpeting
- Triple window with Roman shade
- Glazed door to Deck with Roman shade
- Crown molding
- Custom fitted closet including wine rack
- Flows to Primary Bedroom Passage
- Open flow to Kitchen

KITCHEN 12'0" X 8'6"

- Ebony hand-scraped engineered hardwood flooring
- Sliding glass doors to Deck
- Raised-panel wood cabinetry including breakfast bar, pass-through glass door cabinets, open shelving, dovetailed drawers and matching crown molding
- Granite counters
- Ceramic tile backsplashes
- Viking stainless steel French door refrigerator
- Viking stainless steel electric range
- Viking stainless steel built-in microwave
- Viking stainless steel under-counter wine cooler
- Whirlpool stainless steel dishwasher
- Stainless steel undermount sink with Insinkerator disposal
- Pantry closet
- Recessed lighting
- Under-cabinet lighting

PRIMARY BEDROOM PASSAGE

- Wall-to-wall carpeting
- Access to Powder Room
- Utility closet with HVAC unit
- Custom fitted walk-in closet
- Crown molding
- Recessed lighting
- Electric service panel

PRIMARY BEDROOM 18'11" X 14'0"

- Private hall entry with access to Primary Bath and custom fitted walk-in closet
- Wall-to-wall carpeting
- Accent bed wall with custom panel moldings
- Triple windows with Roman shade

- Sliding glass doors to Deck with Roman shade
- Glazed door to Deck with Roman shade
- Custom fitted double closet

PRIMARY BATH 13'1" X 5'9"

- Marble floor
- Wraparound double vanity with granite top, vessel sinks, plate glass mirrors and overhead lighting
- Marble steam shower stall including ceiling with built-in bench, 2 wall niches, additional handheld shower and glass door enclosure
- Linen cabinet
- Wall cabinet
- Recessed light
- Exhaust fan

BEDROOM PASSAGE

- Ebony hand-scraped engineered hardwood flooring
- Recessed lighting
- Crown molding
- Utility closet with HVAC
- Laundry closet with Frigidaire washer/dryer stack unit
- Electric service panel

BEDROOM 2 14'10" X 13'6"

- Ebony hand-scraped engineered hardwood flooring
- Triple window with built-in window seat/storage bench
- Glazed door to Deck with Roman shade
- Custom fitted walk-in closet
- Recessed light

OFFICE/GUEST ROOM 14'8" X 7'1"

- Pocket door entry
- Ebony hand-scraped engineered hardwood flooring
- Custom fitted walk-in closet
- Recessed lighting

HALL BATH 11'0" X 5'5"

- Marble floor
- Vanity with granite top, vessel sink, mirrored medicine cabinet and overhead lighting
- Jetted soaking tub in marble tub platform with marble surround and 2 wall niches
- Wall cabinet
- Recessed light
- Exhaust fan

POWDER ROOM

- Ebony hand-scraped engineered hardwood flooring
- Vanity with granite top, stainless steel vessel sink, mirror-door medicine cabinet and overhead lighting
- Linen cabinet
- Exhaust fan

DECK 1 10'6" X 5'6"

- Marble floor
- Access from Living Room and Bedroom 2

- Views of Harborview Marina and Domino Sugar

DECK 2 10'8" X 6'4"

- Marble floor
- Access from Family Room, Kitchen and Primary Bedroom
- Views of Harborview Marina and Domino Sugar

FEATURES AND AMENITIES

- Two combined units, total 2090 square feet
- Three assigned parking spaces
- Two storage units
- Full-service building with 24-hour concierge
- Health Club with whirlpool, sauna and steam room
- Aerobic Room- 24-hour access
- Exercise Room- 24-hour access
- Outdoor floating pool
- Indoor pool
- Meeting/Game Room
- Party/Reception Room
- Overnight guest suites available
- Valet parking



Hubble Bisbee

GREEN SPRING
STATION
410-321-1411

CHRISTIE'S
INTERNATIONAL REAL ESTATE

