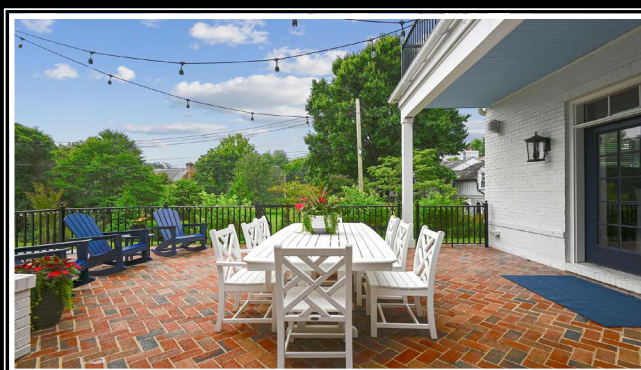


*Hubble
Bisbee*

CHRISTIE'S
INTERNATIONAL REAL ESTATE



6401-A MURRAY HILL ROAD
MURRAY HILL

GREEN SPRING STATION

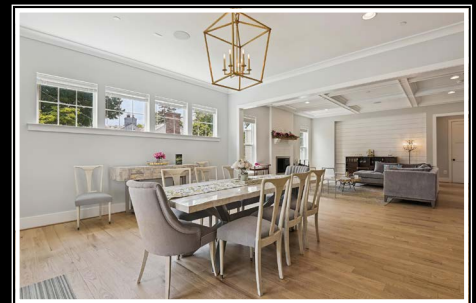
2330 W Joppa Road, Suite 104
Lutherville, MD 21093
410-321-1411

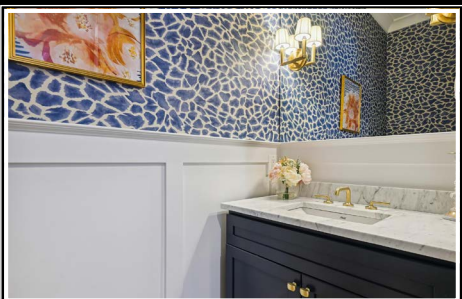
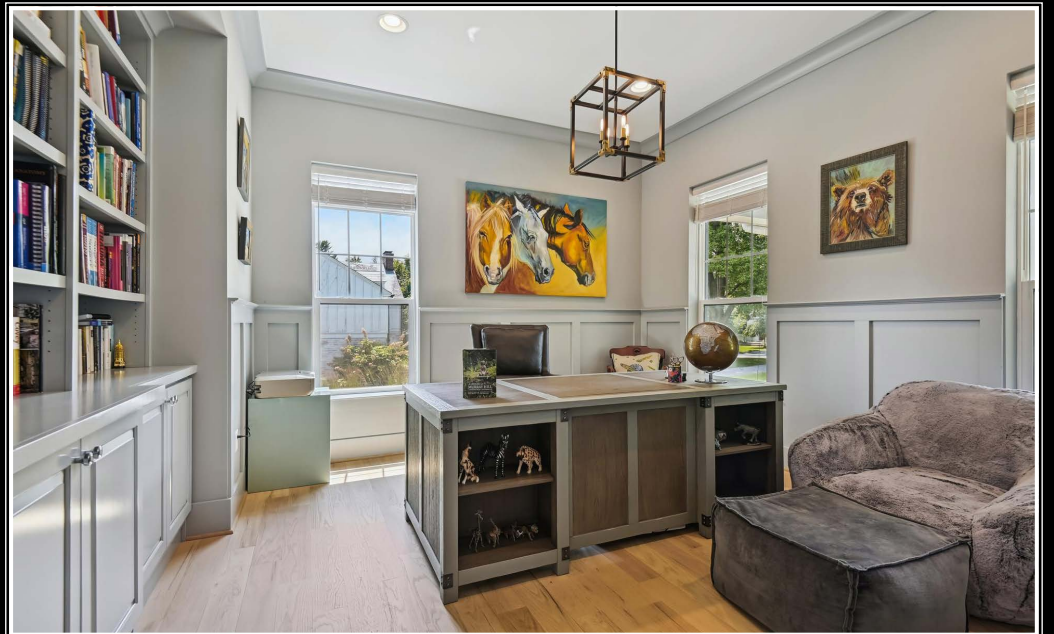
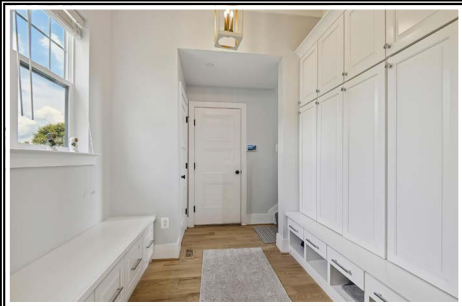


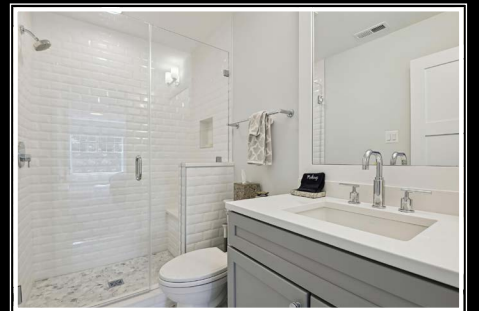
LYNN PLACK

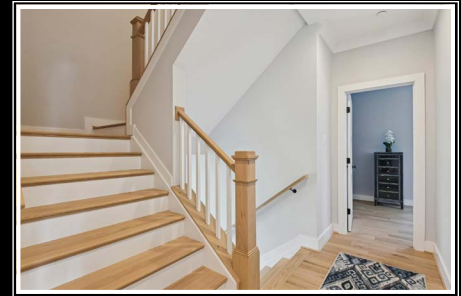
Realtor®
LynnPlack@HubbleBisbee.com
410-340-2939

WWW.HUBBLEBISBEE.COM









FOYER

- Entry door with 12-pane window and transom
- Hardwood flooring
- Shiplap paneled wall
- Window with plantation blind
- Crown molding
- Bronze and glass pendant light
- Wide cased portal to Living Room

LIVING ROOM

- Hardwood flooring
- Coffered ceiling trimmed with crown molding
- Brick chimney wall with wood burning fireplace on raised hearth, wood mantel shelf and glass doors
- Open oak staircases to upper and lower level with hardwood handrails and painted spindles
- Shiplap paneled wall
- Two windows with plantation blinds
- Recessed lighting
- Built-in ceiling speakers
- Open flow through wide cased portal to Dining Room
- Passage to Office with double closet and access to Powder Room

OFFICE

- Hardwood flooring
- Paneled wainscot
- Built-in bookcases with base cabinets
- Three windows with plantation blinds
- Crown molding
- Walk-in closet with window with plantation blind
- Recessed lighting
- Black metal/brass pendant light
- Power and cable source for wall mounted TV

POWDER ROOM

- Hardwood flooring
- Paneled wainscot
- Vanity with marble top, plate glass mirror and double wall sconce lighting with shades
- Crown molding
- Exhaust fan

DINING ROOM

- Hardwood flooring
- French doors to Patio with transom and plantation blinds
- Four windows with plantation blinds
- Crown molding
- Recessed lighting
- Modern brass pendant light
- Built-in ceiling speakers
- Open flow to Kitchen

KITCHEN

- Hardwood flooring
- Shaker style wood cabinetry in white and gray finishes including island/breakfast bar, wall cabinets to ceiling, custom range hood enclosure, pantry cabinet, pot-pan drawers, roll-out spice rack, lazy-Susan base cabinet, roll-out trays, tray cabinet, pull-out trash/recycle bins and dovetailed drawers
- Marble counters
- Beveled subway tile backsplashes
- Sub-Zero stainless steel built-in refrigerator
- Wolf commercial grade stainless steel 8-burner gas range with 2 ovens and range vent with lighting
- Wolf stainless steel built-in microwave
- Bosch stainless steel dishwasher
- Kohler oversized ceramic farmhouse sink with Insinkerator disposal

- Double window with plantation blind
- Recessed lighting
- Under-cabinet lighting
- Three glass globe pendant lights above island
- Built-in ceiling speaker
- Flows to Wet Bar

WET BAR

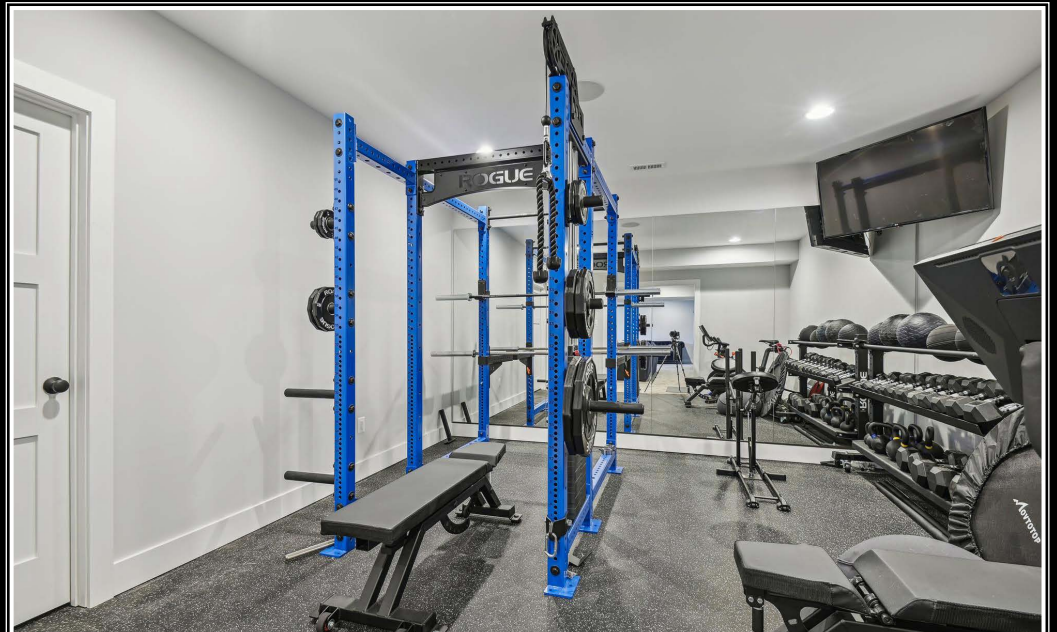
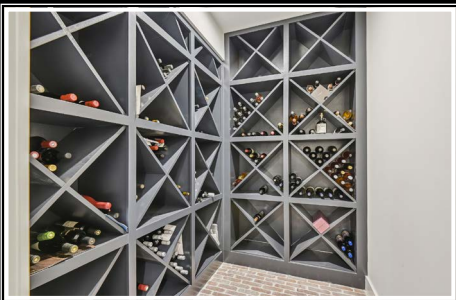
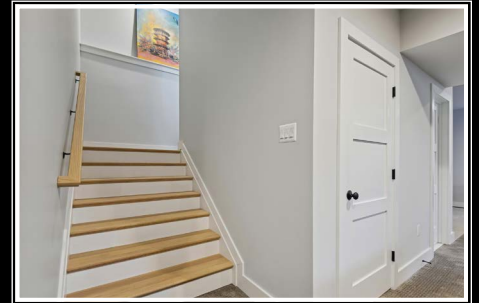
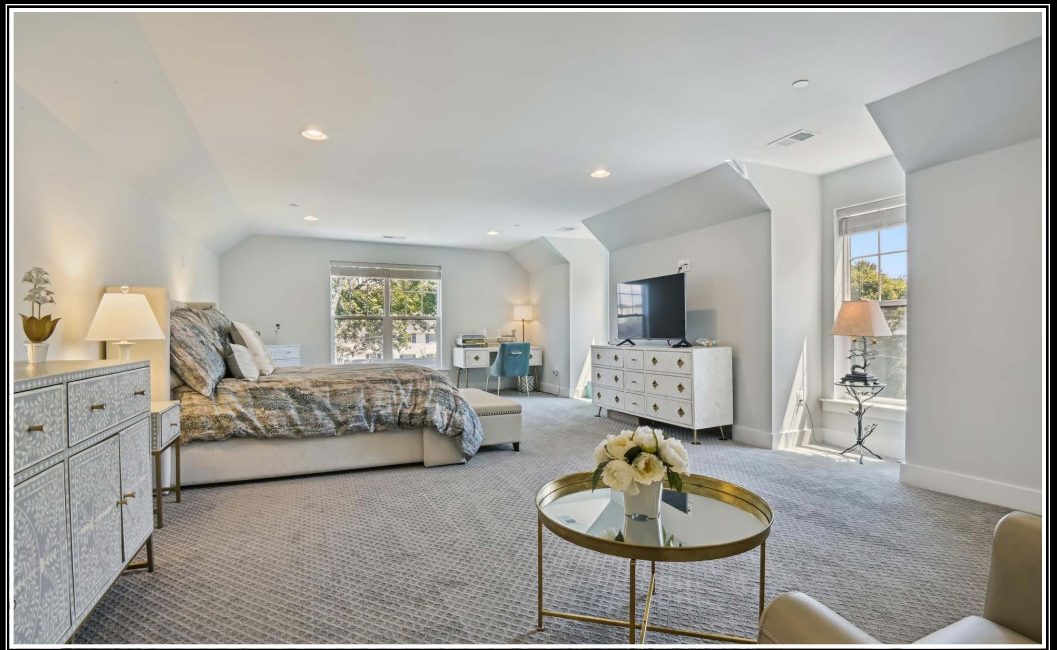
- Hardwood flooring
- Shaker style wood cabinetry matching Kitchen in gray finish including glass-door wall cabinets
- Granite counter
- Sub-Zero under-counter wine cooler
- Stainless steel undermount sink
- Double pantry closet
- Crown molding
- Recessed light
- Cased portal to Back Foyer

BACK FOYER

- Hardwood flooring
- Shaker style base and wall cabinet matching Kitchen with granite top
- Exit door to Patio with 9-pane window and transom
- Modern brass pendant light
- Cased portal to Mudroom

MUDROOM

- Hardwood flooring
- Built-in 5-locker mudroom cabinetry
- Built-in seating bench with drawers
- Double window with plantation blinds
- Crown molding
- Open carpeted staircase to Au-Pair suite
- Closet



- Two modern pendant lights
- Access to Garage

GARAGE

- Three-car
- Finished
- Epoxy floor finish
- Automatic door openers
- New Age Products metal shop cabinetry-negotiable
- Potomac Garage Solutions overhead storage units- 1 motorized
- Three windows with plantation blinds
- Exit door to firepit patio with 9-pane window and plantation blind

SECOND FLOOR

HALL

- Landing for staircase- continues to 3rd Floor
- Hardwood flooring
- Linen closet
- Crown molding
- Recessed lighting

PRIMARY BEDROOM

- Hardwood flooring
- French doors with plantation blinds to private balcony
- Two windows with plantation blinds
- Private balcony overlooking patio with black metal railings
- Crown molding
- Two walk-in closets
- Drum ceiling light
- Power and cable source for wall mounted TV
- Wall mounted TV excluded- mounting bracket to remain

PRIMARY BATH

- Marble finish ceramic tile floor, wainscot and shower stall
- Freestanding soaking tub with floor mounted faucet and handheld shower
- Double vanity with solid surface top, Kohler undermount sinks, framed plate glass mirror and overhead lighting
- Shower stall with built-in bench, rainshower, additional shower, wall niche and glass door enclosure
- Water closet
- Linen closet
- Window with plantation blind
- Recessed lighting
- Exhaust fans

BEDROOM 2

- Wall-to-wall carpeting
- Window with plantation blind
- Closet
- Ceiling light
- Power and cable source for wall mounted TV
- Private Bath

BATH 2

- Ceramic tile floor
- Vanity with solid surface top, Kohler undermount sink, plate glass mirror and overhead lighting
- Soaking tub/shower combination with subway tile surround, built-in niche and recessed light
- Window with plantation blind
- Exhaust fan

BEDROOM 3

- Wall-to-wall carpeting
- Two windows with plantation blinds
- Walk-in closet with window with plantation blind

- Ceiling light
- Power and cable source for wall mounted TV
- Private Bath

BATH 3

- Ceramic penny tile floor and shower floor
- Vanity with solid surface top, Kohler undermount sink, framed plate glass mirror, overhead lighting and mirrored medicine cabinet
- Shower stall with built-in bench, subway tile walls, wall niche, recessed light and glass door enclosure
- Exhaust fan

LAUNDRY ROOM

- Ceramic hex-tile floor
- Shaker style wall cabinets and base cabinet with solid surface top and stainless steel undermount sink
- LG washer and dryer
- Two windows with plantation blinds
- Recessed lighting

THIRD FLOOR

- Landing for staircase with hardwood floor, access to Bedroom 4 and attic

BEDROOM 4

- Wall-to-wall carpeting
- Double window with plantation blind
- Walk-in closet
- Ceiling light
- Power and cable source for wall mounted TV
- Private Bath

BATH 4

- Marble hex-tile floor and shower stall floor
- Vanity with solid surface top, Kohler undermount sink, framed plate glass mirror, overhead lighting and mirrored medicine cabinet
- Shower stall with beveled subway tile walls, built-in bench and wall niche, recessed light and glass door enclosure
- Exhaust fan

AU-PAIR SUITE

HALL

- Private carpeted staircase access from Mudroom with window on mid-landing with plantation blind
- Wall-to-wall carpeting
- Recessed lighting
- Utility closet with HVAC unit"

BEDROOM 5

- Wall-to-wall carpeting
- Double window and 2 additional windows with plantation blinds
- Recessed lighting
- Power and cable source for wall mounted TV
- Passage to Bath with window with plantation blind and access to walk-in closet

BATH 5

- Chevron pattern marble tile floor
- Vanity with solid surface top, Kohler undermount sink, plate glass mirror and overhead lighting
- Soaking tub/shower combination with subway tile surround and recessed light
- Heat lamp
- Exhaust fan

LOWER LEVEL

FAMILY ROOM

- Wall-to-wall carpeting including staircase access from Living Room
- Window with plantation blind
- Two transom windows with plantation blinds
- Wine Room with brick floor and built-in wine racks
- Wet bar with ceramic tile floor, Shaker style base cabinets and glass-door wall cabinets, leathered granite counters, KitchenAid under-counter wine cooler and ice machine, stainless steel undermount sink
- Large finished storage room with heavy duty steel storage shelving
- Under-stair closet with home media and security system
- Recessed lighting
- Built-in ceiling speakers
- Power and cable source for wall mounted TV
- Wall mounted TV excluded- mounting bracket to remain

EXERCISE ROOM

- Low impact rubber flooring
- Wall of plate glass mirrors
- Recessed lighting
- Built-in ceiling speaker
- Power and cable source for wall mounted TV
- LG wall mounted TV

BATH

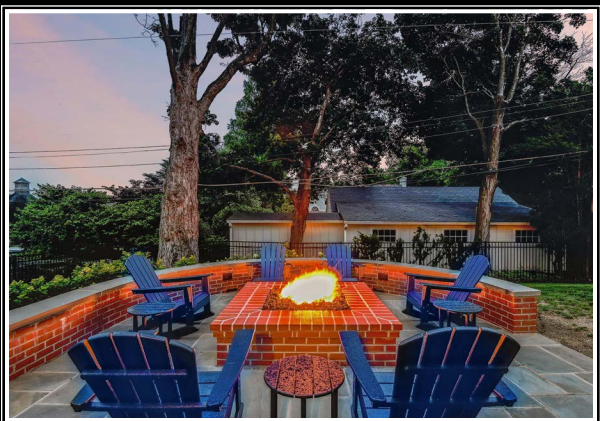
- Stone finish ceramic tile floor
- Vanity with solid surface top, Kohler undermount sink, plate glass mirror and overhead lighting
- Soaking tub/shower combination with beveled subway tile surround
- Exhaust fan

UTILITY ROOM

- Two Trane HVAC units with gas heat
- Two Rinnai gas-fired tankless water heaters
- Electric service panels
- Sump pump

EXTERIOR

- New built 2020
- White painted brick and Hardiplank siding
- Synthetic slate roof with snow guard
- Jeld-Wen Windows
- Wraparound brick porch at main entry with standing seam metal roof, wood columns and recessed lighting
- Elevated brick patio accessed from Dining Room and Back Foyer with metal railings, brick steps to driveway and string lighting
- Black metal-fenced back and side yards with bluestone patio with curved bluestone-capped seating wall and 270,000 BTU brick gas-fired firepit
- Extensive exterior lighting
- Professionally landscaped by Maxalea and Mullen Nursery
- Paved driveway with turnabout in front and large parking pad at garages
- Bluestone walkways
- Hose bib drip irrigation system



*Hubble
Bisbee*

CHRISTIE'S
INTERNATIONAL REAL ESTATE

GREEN SPRING
STATION
410-321-1411

