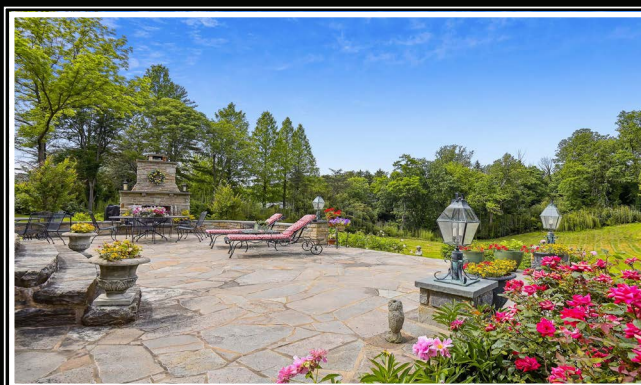
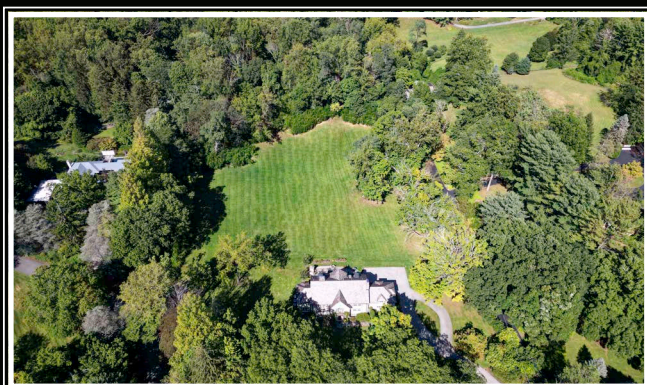


*Hubble
Bisbee*

CHRISTIE'S
INTERNATIONAL REAL ESTATE



7207 BELLONA AVENUE
RUXTON/WOODBROOK

GREEN SPRING STATION

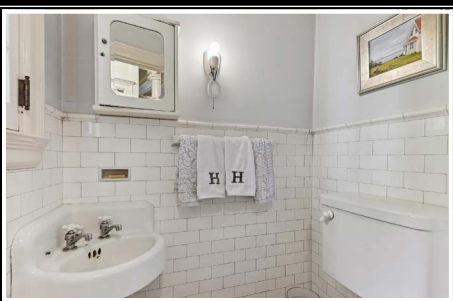
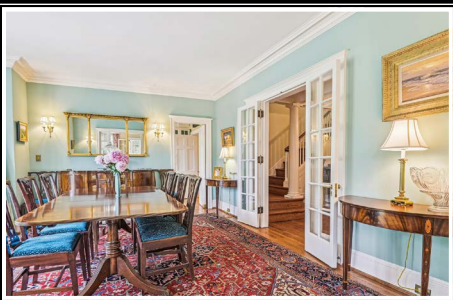
2330 W Joppa Road, Suite 104
Lutherville, MD 21093
410-321-1411

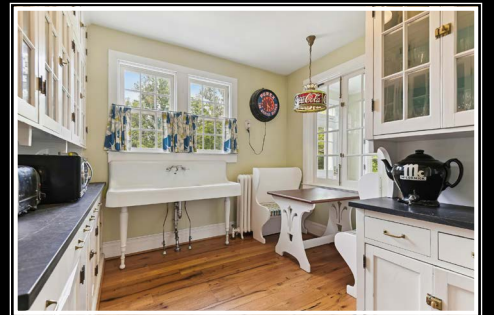


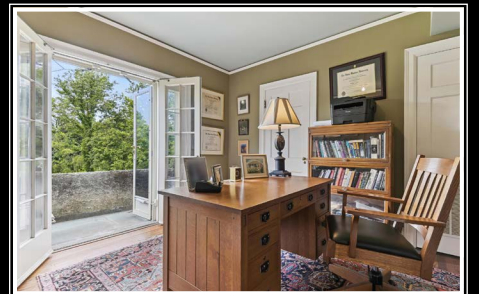
LYNN PLACK

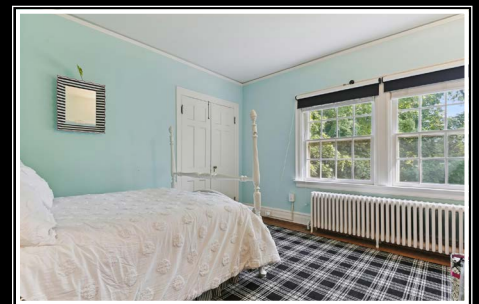
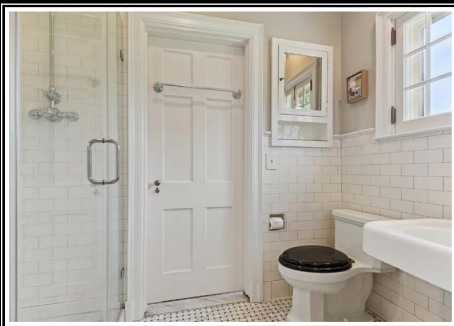
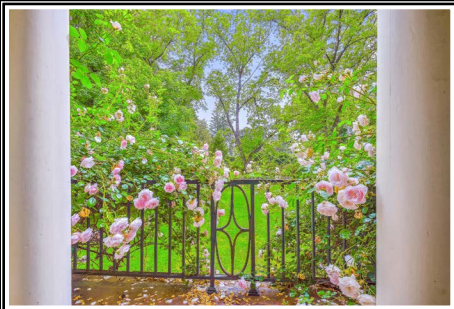
Realtor®
LynnPlack@HubbleBisbee.com
410-340-2939

WWW.HUBBLEBISBEE.COM











VESTIBULE 5'7" X 4'5"

- Paneled entry door with leaded glass sidelights
- Hardwood flooring
- Crown molding
- Walk-in closet with window
- Step-up through pilasters to Foyer

FOYER 17'0" X 9'5"

- Hardwood flooring
- Hyphenated with beams, columns and pilasters
- Open oak staircase with hardwood handrails and painted spindles
- Recess-paneled wall at staircase
- Built-up crown molding
- Passage to Kitchen with shelved closet, vintage telephone shelf and Power Room with ceramic tile floor and wainscot, window, vintage medicine cabinet and wall sconce light
- Antique brass pendant light with curved glass panels
- French doors with sidelights to Living Room and Dining Room

LIVING ROOM 21'7" X 16'7"

- Hardwood flooring
- Recess-paneled chimney wall with wood burning fireplace, Colonial mantel, brick surround and hearth
- Two sets of illuminated bookcases flanking fireplace with base cabinets and bead board backing- left bookcase surrounds French doors to Den in paneled recess
- Double window with custom drapery treatment
- Built-up crown molding
- French doors with sidelights to Family Room
- Draperies and rods excluded

FAMILY ROOM 19'10" X 12'4"

- Slate floor with gloss finish

- Three walls of windows including French doors to front yard
- French doors to Den

DEN 17'0" X 11'6"

- Hardwood flooring
- Triple window with drapery treatment
- French doors to yard with drapery treatment
- Built-up crown molding
- Four brass double wall sconce lights with shades
- French doors with sidelights to Dining Room

DINING ROOM 17'4" X 15'9"

- Hardwood flooring
- Large walk-in bay window with French doors to patio and drapery treatment
- Built-up crown molding
- Four brass double wall sconce lights with shades
- Swinging door to Breakfast Room/Pantry
- Draperies & rods excluded

BREAKFAST ROOM/PANTRY 12'1" X 10'9"

- Random width hardwood flooring
- Full-height original wood cabinets with soapstone counters, base cabinets, glass door cabinets and upper storage cabinets
- Original cast iron porcelain finish console sink
- Table area
- Double window with curtains at sink
- Additional interior window in breakfast area (to Laundry Room)
- Copper ceiling light with milk glass shade
- Swinging door to Kitchen
- Art-glass pendant light excluded

KITCHEN 16'3" X 13'8"

- Random width hardwood flooring
- Full-height original wood cabinets with base cabinets, glass door cabinets and upper storage cabinets
- Reproduced matching sink base cabinet with pull-out trash bin and dishwasher
- Soapstone counters
- Sub-Zero commercial grade stainless steel refrigerator/freezer with glass-door refrigerator, 2 freezer drawers and 2 refrigerator drawers
- Lacanche 55" commercial grade 4-burner gas range with additional central 18,000 btu burner, 2 ovens, plancha griddle and flame grill
- Custom commercial copper range hood to ceiling with lighting
- Marble subway tile backsplash at range
- Bosch dishwasher concealed by matching front panel
- Ceramic farmhouse sink with Insinkerator disposal
- Double window with curtains
- Crown molding
- Built-in cookbook shelving
- Recessed lighting
- Two Edison bulb pendant lights
- Swinging door to passage to Foyer with staircase to Lower Level
- Back stairs to 2nd Floor
- Access doors with 9-pane windows to Garage and laundry Room

LAUNDRY ROOM 12'1" X 5'8"

- Random width hardwood flooring
- Walk-in pantry closet
- Built-in shelving above laundry area
- Miele washer and dryer beneath hardwood folding counter
- Window
- Additional interior window to Breakfast Room

- Exit door with 9-pane window
- Crown molding
- Two milk-glass ceiling lights

GARAGE

- Two-car with automatic door opener
- Heated
- Double window and 2 additional windows
- Four pendant lights
- Frigidaire refrigerator
- Steps up to Kitchen

SECOND FLOOR

HALL

- Landing for main staircase with wraparound banister overlook with columns
- Hardwood flooring
- Palladian window with French doors to Balcony
- Built-up crown molding
- Concealed back staircase to Kitchen
- Concealed staircase to 3rd Floor with closet
- Ceiling light
- Bedroom Passage with utility closet with Carrier CAC unit, linen closet with window and access to Bedrooms 2, 3 and 4 and Hall Bath
- Access to Primary Suite

PRIMARY SUITE

- Private Hall entry with closet, access to Study, Dressing Room and Primary Bedroom

PRIMARY BEDROOM 18'4" X 16'3"

- Hardwood flooring
- Wood burning fireplace with Colonial mantel, brick surround and hearth
- Double window with plantation blinds and drapery treatment
- Picture rail moldings
- Closet
- Recessed lighting
- Two brass double wall sconce lights with shades
- Access to Primary Bath
- French doors to Sitting Room

SITTING ROOM 19'9" X 12'1"

- Heart pine flooring
- Four windows

PRIMARY BATH 11'8" X 11'0"

- Marble basketweave pattern floor including shower stall
- Subway tile wainscot and shower stall
- Two matching chest vanities each with marble top, Ronbow undermount sink, wall sconce lighting with milk-glass shades and matching wood medicine cabinet with beveled mirror
- Shower stall with built-in marble bench, rain showerhead, additional handheld shower, recessed light and frameless glass door
- Built-in linen shelving
- Window with Roman shade and additional window
- Recessed lighting
- Exhaust fans
- Access to Dressing Room

DRESSING ROOM 12'1" X 6'5"

- Dual access
- Hardwood flooring
- Custom built-in wardrobe cabinetry
- Window with plantation blind
- Closet
- Wall cabinet with beveled mirror
- Ceiling lights

STUDY 12'1" X 10'8"

- Hardwood flooring
- French doors with sidelights to Balcony

- Picture rail molding
- Utility closet with Carrier CAC unit
- Ceiling light
- Access to Shared Bath

SHARED BATH

- Marble basketweave pattern floor including shower stall
- Subway tile wainscot and shower stall
- Pedestal sink
- Full width shower stall with rain showerhead and frameless glass door enclosure
- Two medicine cabinets with beveled mirrors
- Window
- Recessed lighting

BEDROOM 2 13'8" X 12'1"

- Hardwood flooring
- Double window and additional window with plantation blinds
- Picture rail molding
- Closet
- Ceiling light
- Brass wall sconce light with shade
- Access to Shared Bath

BEDROOM 3 19'9" X 18'7"

- Hardwood flooring
- Three windows in wide dormer recesses
- Four closets- 2 shelved
- Pendant light with shade
- Access to Hall Bath

BEDROOM 4 12'5" X 12'2"

- Hardwood flooring
- Double window with plantation blinds and room darkening shades
- Picture rail molding
- Closet
- Ceiling light

HALL BATH

- Dual access
- Marble tile floor
- Subway tile wainscot and tub surround
- Pedestal sink with medicine cabinet with beveled mirror
- Soaking tub
- Window
- Linen closet
- Wall sconce light and ceiling light

THIRD FLOOR

HALL

- Pine staircase access with banister overlook
- Pine flooring
- Window in deep dormer recess
- Wall sconce light with shade

BEDROOM 5 14'0" X 13'10"

- Vestibule access with closet
- Pine flooring
- Arched window in dormer recess
- Additional window
- Brass wall sconce lights with shades

BEDROOM 6 12'5" X 8'4"

- Pine flooring
- Arched window
- Closet
- Wall sconce light

HALL BATH

- Marble basketweave pattern floor
- Bead board wainscot
- Wall mounted sink with medicine cabinet with mirror
- Footed soaking tub with French shower
- Window in dormer recess with built-in linen cabinet below

- Wall sconce light
- Ceiling light

STORAGE ATTIC 18'3" X 14'0"

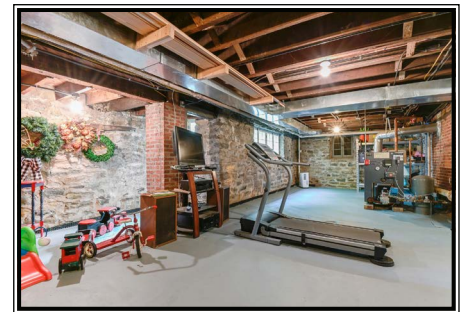
- Pine flooring
- Two windows
- Two closets
- Storage shelving and clothes poles
- Carrier CAC unit
- Finish potential

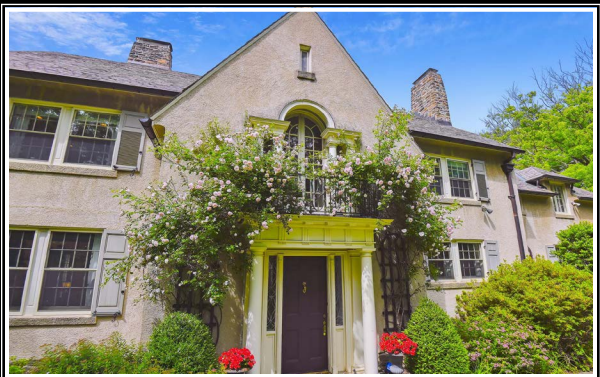
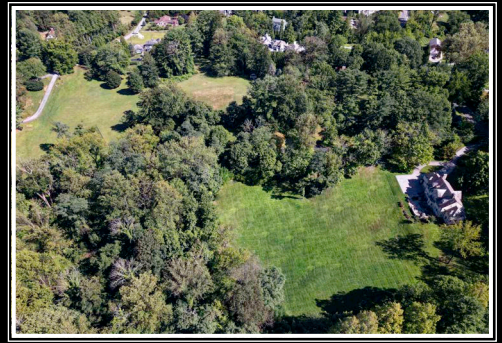
LOWER LEVEL

- Partitioned into several areas
- Unfinished
- French drain waterproofing system
- Two storage rooms with shelving- 1 with window
- Enclosed flush with window
- Two double windows and 5 additional windows
- Exit door with 9-pane window
- Weil McLain gas-fired boiler for radiator heat (whole house)
- Carrier CAC unit- 1 of 4 zones
- A O Smith gas-fired water heater
- Electric service panels
- Triple utility sink
- GE washer and Whirlpool dryer

EXTERIOR

- Stucco over mortar home in the country English tradition with stone chimneys and foundation walls
- Thorough 2012 renovation
- Slate roof
- Flagstone walkway to covered flagstone porch at main entry with classic columns and wrought iron roof railing
- Architectural cased French doors from Dining Room to patio
- Flagstone Patio (20??) with stone seating walls with lamp posts, stone outdoor fireplace, stone steps to Parking pad and stone steps and porch to Dining Room
- Flagstone walkways
- Stone steps to Laundry Room
- Driveway with circular turnaround to large parking pad at Garage
- Original bi-folding carriage house doors on Garage concealing modern garage door
- Deep back yard
- Total 6.0 acres in Ruxton/Woodbrook area





*Hubble
Bisbee*

CHRISTIE'S
INTERNATIONAL REAL ESTATE

GREEN SPRING
STATION
410-321-1411

