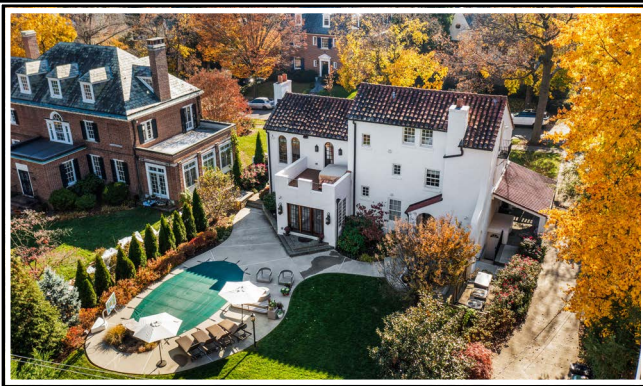


*Hubble
Bisbee*

CHRISTIE'S
INTERNATIONAL REAL ESTATE



2 SAINT MARTINS ROAD

GUILFORD

GREENSPRING STATION

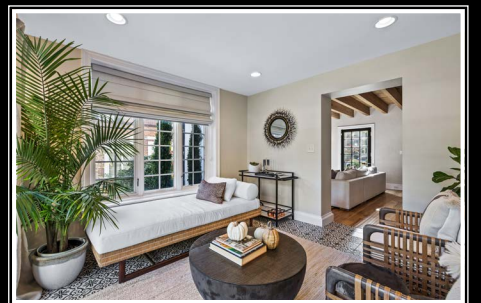
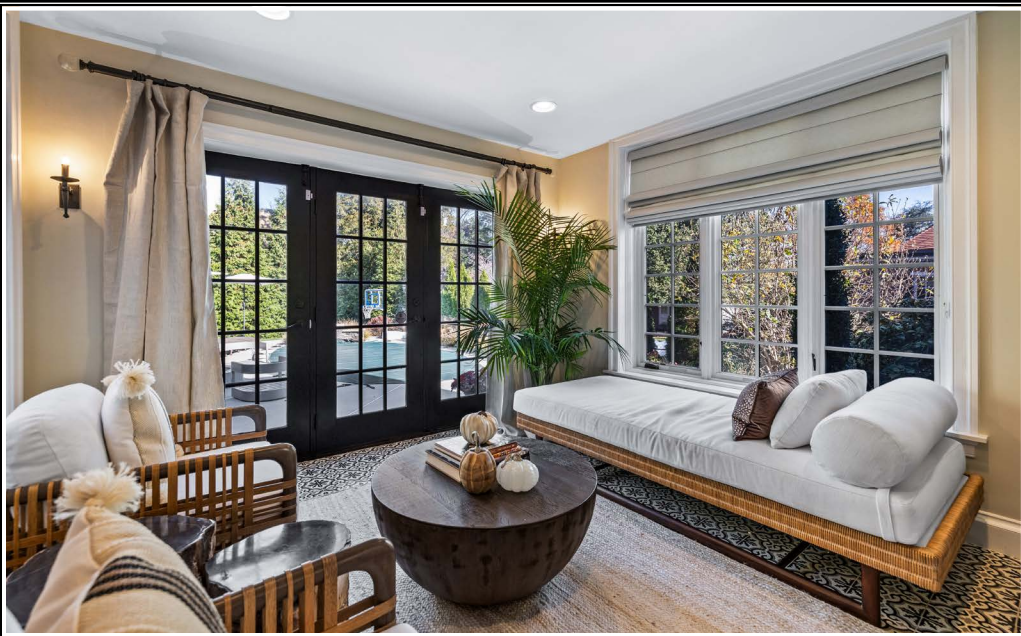
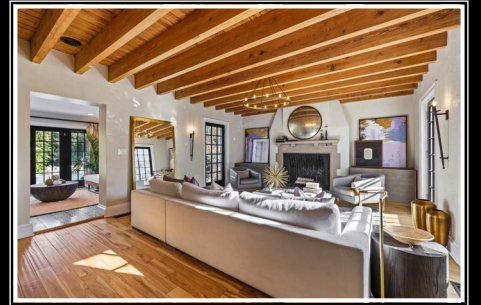
2330 W Joppa Road, Suite 104
Lutherville, MD 21093
410-321-1411

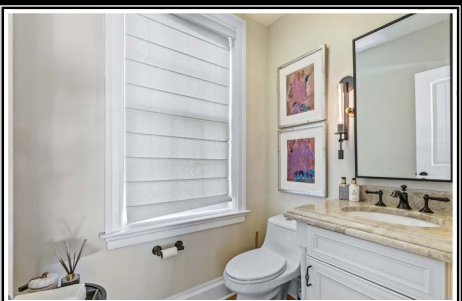


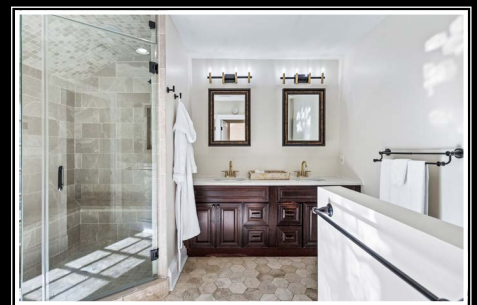
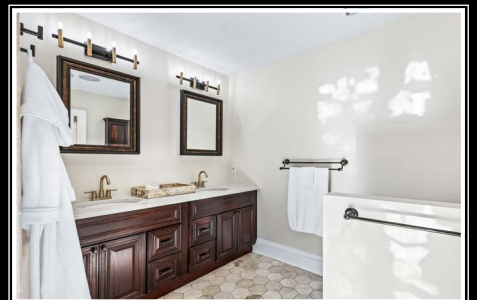
KEISHA MCCLAIN

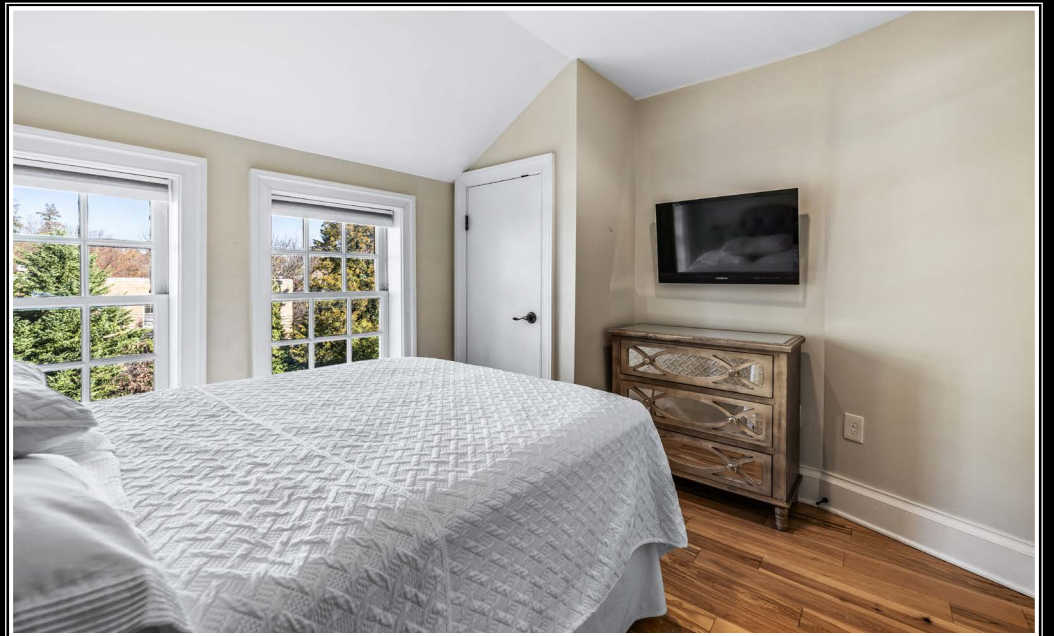
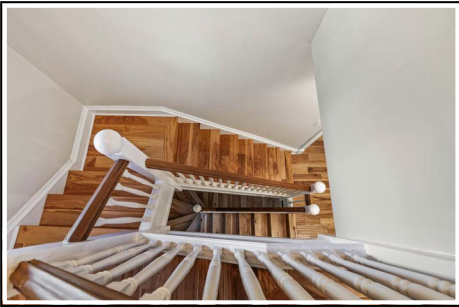
Realtor®
KeishaMcClain@HubbleBisbee.com
443-414-2168

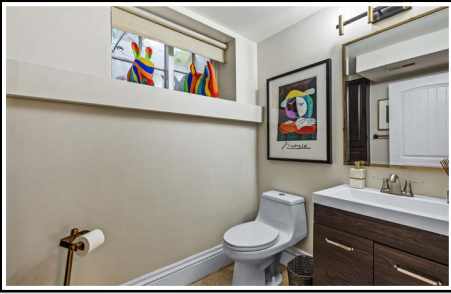
WWW.HUBBLEBISBEE.COM











FOYER 6'5" X 5'11"

- Natural wood plank entry door with bottle-glass window
- Marble floor
- Stucco walls
- Beamed and vaulted cedar paneled ceiling
- Window with custom Roman shade
- Two modern wall sconce lights
- Wrought gates to Living Room

LIVING ROOM 21'8" X 16'0"

- Hand-scraped oak flooring- new 2016-throughout house
- Beamed cedar paneled ceiling
- Stucco walls
- Oversized wood burning fireplace on chimney wall with carved stone mantel and firebox lined with chevron pattern black marble
- Three glazed exit doors with custom Roman shades
- Modern 12-light wheel chandelier
- Two wall sconce lights
- Archways to Stair Hall and Dining Room
- Access to Sunroom

SUNROOM 12'7" X 12'0"

- Ceramic tile floor
- Triple window and double window with custom Roman shades
- Triple atrium doors to Patio and Pool areas
- Recessed lighting
- Two wall sconce lights

STAIR HALL 14'2" X 5'5"

- Step-up through archway from Living Room
- Hand-scraped oak flooring
- Open oak staircases to upper and lower levels with hardwood handrails
- Overlook to Dining Room with custom crafted wrought iron railing
- Wall sconce light
- Access to Powder Room
- Archways to Kitchen and Dining Room

DINING ROOM 16'2" X 14'6"

- Hand-scraped oak flooring
- Triple window and additional window with custom Roman shades
- Modern 6-light chandelier with glass shades

- Three modern wall sconce pendant lights
- Archway to Kitchen

KITCHEN 19'1" X 12'11"

- Hand-scraped oak flooring
- Custom antique white finish recess-panel wood cabinetry including espresso finish island/breakfast bar, 42" wall cabinets, glass-door cabinets, lazy-Susan base cabinets, pull-out spice cabinet, tray cabinet, roll-out trays, pull-out trash/recycle bins, tray cabinet, espresso finish bracketed range hood enclosure and refrigerator cabinet, dovetailed drawers, soft-close cabinets/drawers and matching crown trim
- Granite counters
- Subway tile backsplashes with decorative panel at range
- Samsung stainless steel French door refrigerator with water-ice dispenser
- Viking stainless steel commercial grade 6-burner gas range with 2 ovens, grill and range hood vent

- Viking stainless steel built-in microwave
- Viking stainless steel under counter beverage cooler
- Viking stainless steel under counter wine cooler
- Viking stainless steel dishwasher
- Blanco undermount sink with Insinkerator disposal
- Natural pine exit door with 9-pane window and custom Roman shade to covered porch
- Window with custom Roman shade
- Recessed lighting
- Two brass pendant lights above island
- Samsung wall mounted TV
- Access to Back Hall with hand-scraped oak flooring, pantry cabinets, natural pine exit door to patio and access to Pantry

PANTRY 5'10" X 4'9"

- Hand-scraped oak flooring
- Base and wall cabinets matching Kitchen
- Granite counters matching Kitchen
- Viking stainless steel dishwasher
- Recessed lighting

POWDER ROOM

- Hand-scraped oak flooring
- Vanity with marble top, undermount sink, adjustable wall mounted mirror and modern wall sconce lighting
- Glacier Bay flush
- Window with custom Roman shade
- Ceiling light/exhaust fan

SECOND LEVEL

HALL

- Landing for staircase, continues to 3rd Level
- Hand-scraped oak flooring
- Recessed lighting
- Laundry closet with Whirlpool stacked washer and dryer

PRIMARY BEDROOM 21'8" X 16'0"

- Private hall entry with custom fitted walk-in closet
- Vaulted ceiling
- Hand-scraped oak flooring
- Bed wall trimmed out with wall panel moldings
- Four floor length arched windows with custom Roman shades
- Arched exit door to private Deck with custom Roman shade
- Hot tub Deck (12 x 12) with engineered wood decking, outdoor speaker and stucco knee-walls with wrought iron inserts
- Sony wall mounted TV with built-in surround sound speakers
- Recessed lighting
- Modern brass wheel chandelier
- Passage to Primary Bath with custom fitted walk-in closet, 2 custom fitted double closets and window with custom Roman shade

PRIMARY BATH 11'10" X 8'11"

- Heated marble hex-tile floor
- Double vanity with marble top, undermount sinks, framed mirror medicine cabinets and modern overhead lighting
- Mr. Steam glass enclosed ceramic tile steam shower stall with built-in wraparound bench and wall niche
- Glacier Bay flush
- Wall cabinet
- Floor length arched window with plantation shutters
- Recessed lighting
- Built-in ceiling speakers
- Exhaust fan

BEDROOM 2 15'4" X 10'5"

- Hand-scraped oak flooring
- Two windows with custom Roman shades
- Recessed lighting
- Crystal pendant light
- Custom fitted double closet
- Plate glass mirror with balance bar

BEDROOM 3 12'4" X 10'6"

- Hand-scraped oak flooring
- Two windows with pleated shades
- Custom fitted double closet
- Recessed lighting
- Ceiling fan

HALL BATH

- Marble hex-tile floor
- Vanity with quartz top, undermount sink, adjacent linen cabinet, framed mirror medicine cabinet and modern overhead lighting
- Jetted tub/shower combination with ceramic tile surround
- Glacier Bay flush
- Recessed light
- Ceiling light/exhaust fan

THIRD LEVEL

HALL

- Landing for staircase with window on mid-landing
- Hand-scraped oak flooring
- Linen closet
- Modern pendant light above staircase
- Recessed lighting
- Access to Attic

BEDROOM 4 10'5" X 9'4"

- Hand-scraped oak flooring
- Two windows with pleated shades
- Closet
- Recessed lighting
- Insignia wall mounted TV

BEDROOM 5 12'11" X 9'10"

- Hand-scraped oak flooring
- Arched window with custom Roman shade
- Closet
- Recessed lighting
- Attic access

HALL BATH

- Marble hex-tile floor
- Vanity with quartz top, undermount sink and plate glass mirror
- Tub/shower combination with subway tile surround and handheld shower
- Glacier Bay flush
- Window with pleated shade
- Recessed light
- Exhaust fan

LOWER LEVEL

RECREATION ROOM 19'5" X 14'4"

- Open oak staircase access
- Travertine floor
- Custom built-in entertainment center surrounding gas fireplace including base cabinets, open shelving and Sony wall mounted TV
- Built-in surround sound speakers
- Window with shade
- Recessed lighting
- Under-stair storage closet
- Flows to Hall with Travertine floor, staircase to exit door, access to Laundry Room and Utility Room
- Access to Powder Room

POWDER ROOM

- Travertine floor
- Vanity with solid surface top and seamless sink, framed mirror and modern overhead lighting
- Glacier Bay flush
- Wall cabinets
- Window with shade
- Exhaust fan

LAUNDRY ROOM 10'9" X 8'11"

- Travertine floor
- Base and wall cabinets
- Quartz counters
- Stainless steel undermount sink
- Clothes pole
- Whirlpool pedestal washer and dryer
- Dog wash stall with handheld shower
- Frigidaire freezer
- Recessed lighting

UTILITY ROOM 12'11" X 7'11"

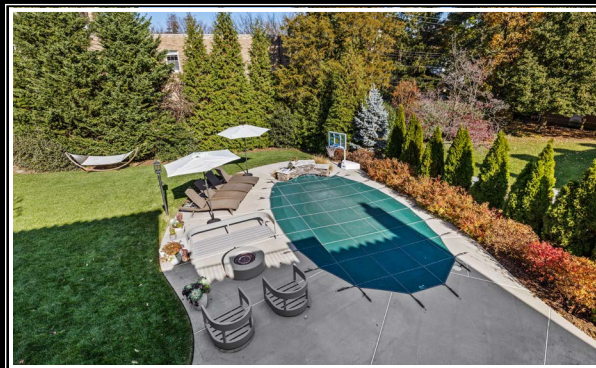
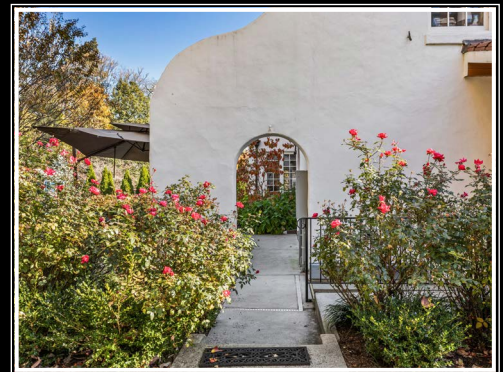
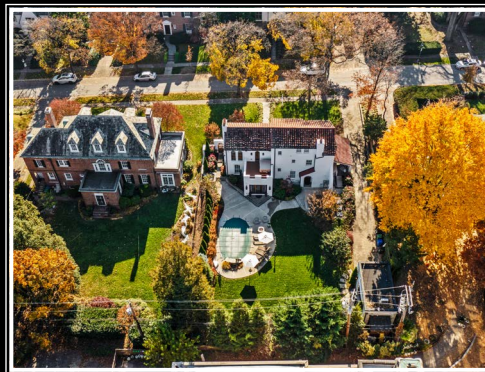
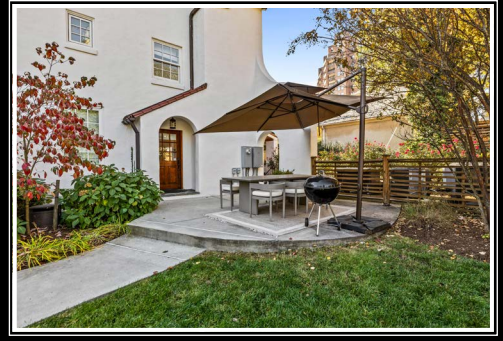
- Concrete floor
- HVAC unit with gas heat and Aprilaire humidifier
- State gas-fired water heater
- Electric service panels
- Sump pump

EXTERIOR

- Classic Spanish Colonial stucco home, built 1926, totally renovated 2016
- Spanish tile roof
- Bluestone steps and walkway to main entry- walkway continues through stucco garden wall archway with garden gate to back yard
- Natural wood finished main entry door, shutters, additional entry doors, garden gates and arched windows
- Walled and fenced back yard with professional border gardens
- In-ground saltwater pool with concrete patios and pool decking
- Additional adjacent concrete patio at covered porch to Kitchen with stucco archway to driveway area and step-down to pool patio
- Covered bluestone porch with access from Kitchen, archway with double garden gates to front yard and walk-out to driveway
- Covered bluestone porch from Kitchen area with stucco archway to patio
- Aggregate driveway through black metal gates to Gym/Studio with stacked stone garden wall running full length on 1 side
- Professionally landscaped and maintained including lush landscape, green walls of privacy, and ever-blooming shrubs and evergreens.

CASITA/GYM

- Stucco exterior walls- matching house
- Bluestone porch at entry
- Double atrium doors with custom shades
- Low-impact flooring
- Window with custom shade
- Laminate cabinetry with open shelving, storage cabinets and under-counter wine cooler
- Additional laminate storage shelving
- Sony wall mounted TV
- Mitsubishi in-wall HVAC unit
- Recessed lighting



*Hubble
Bisbee*

CHRISTIE'S
INTERNATIONAL REAL ESTATE

GREEN SPRING
STATION
410-321-1411

