

*Hubble
Bisbee*

CHRISTIE'S
INTERNATIONAL REAL ESTATE



PHOENIX

13604 JARRETTSVILLE PIKE



LOCATIONS

2330 W Joppa Road, Suite 104
Lutherville, MD 21093

181 Harry S Truman Pkwy Ste 200
Annapolis, MD 21401



KAREN HUBBLE BISBEE

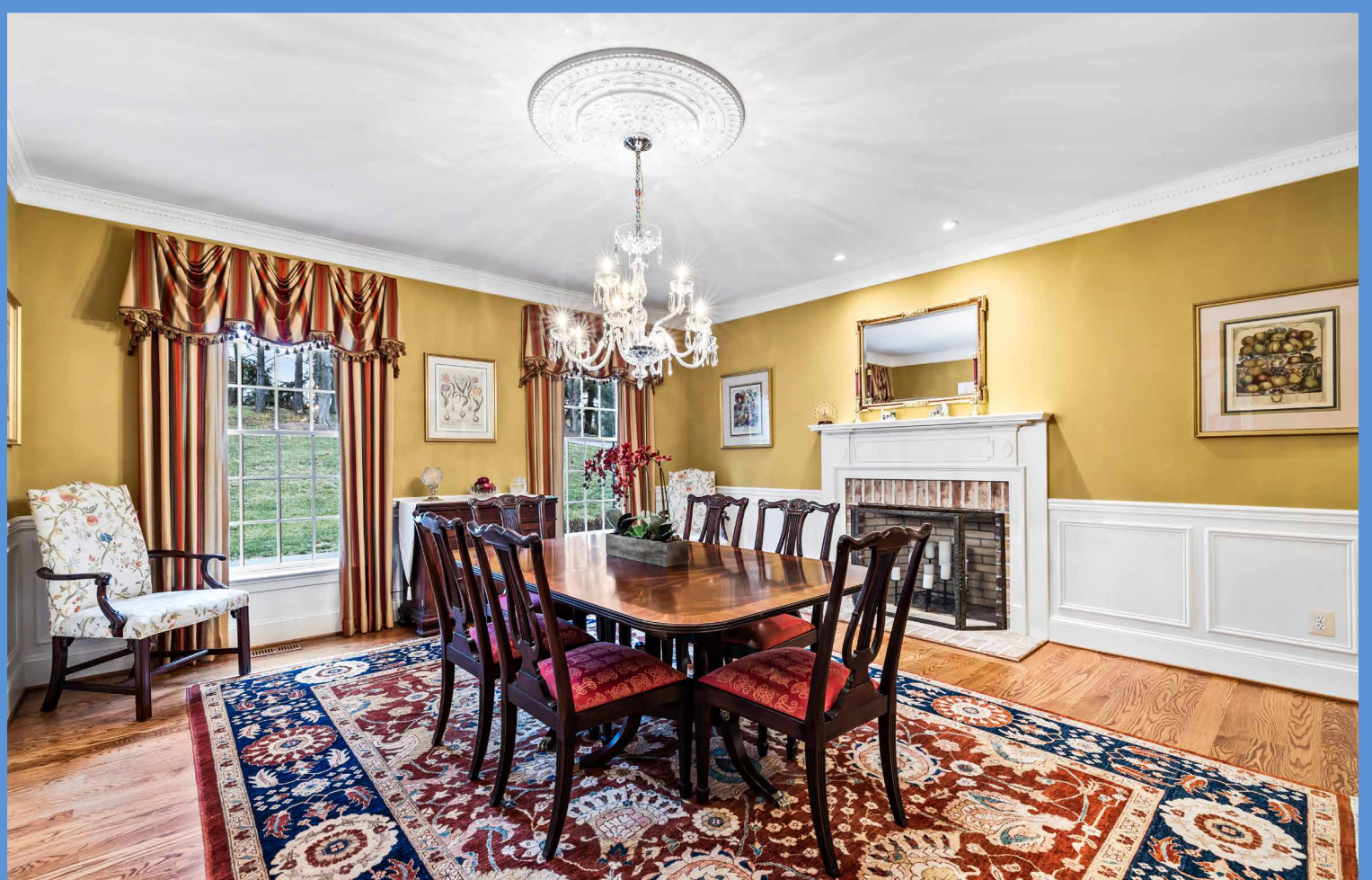
Principal, Associate Broker, ABR, GRI

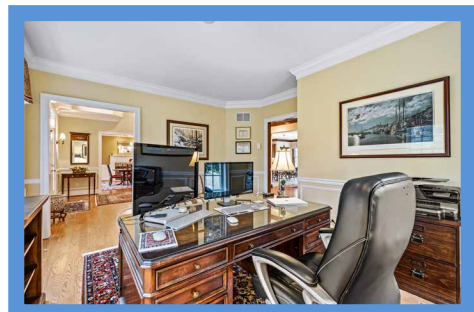
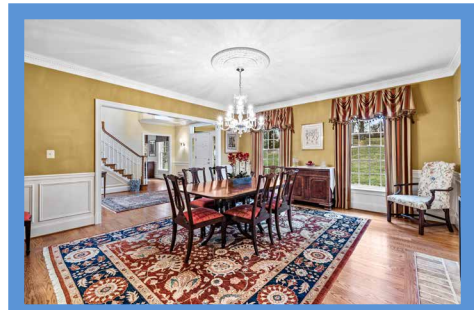
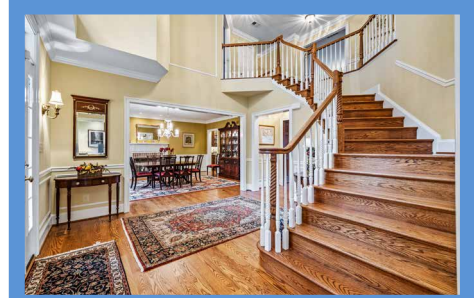
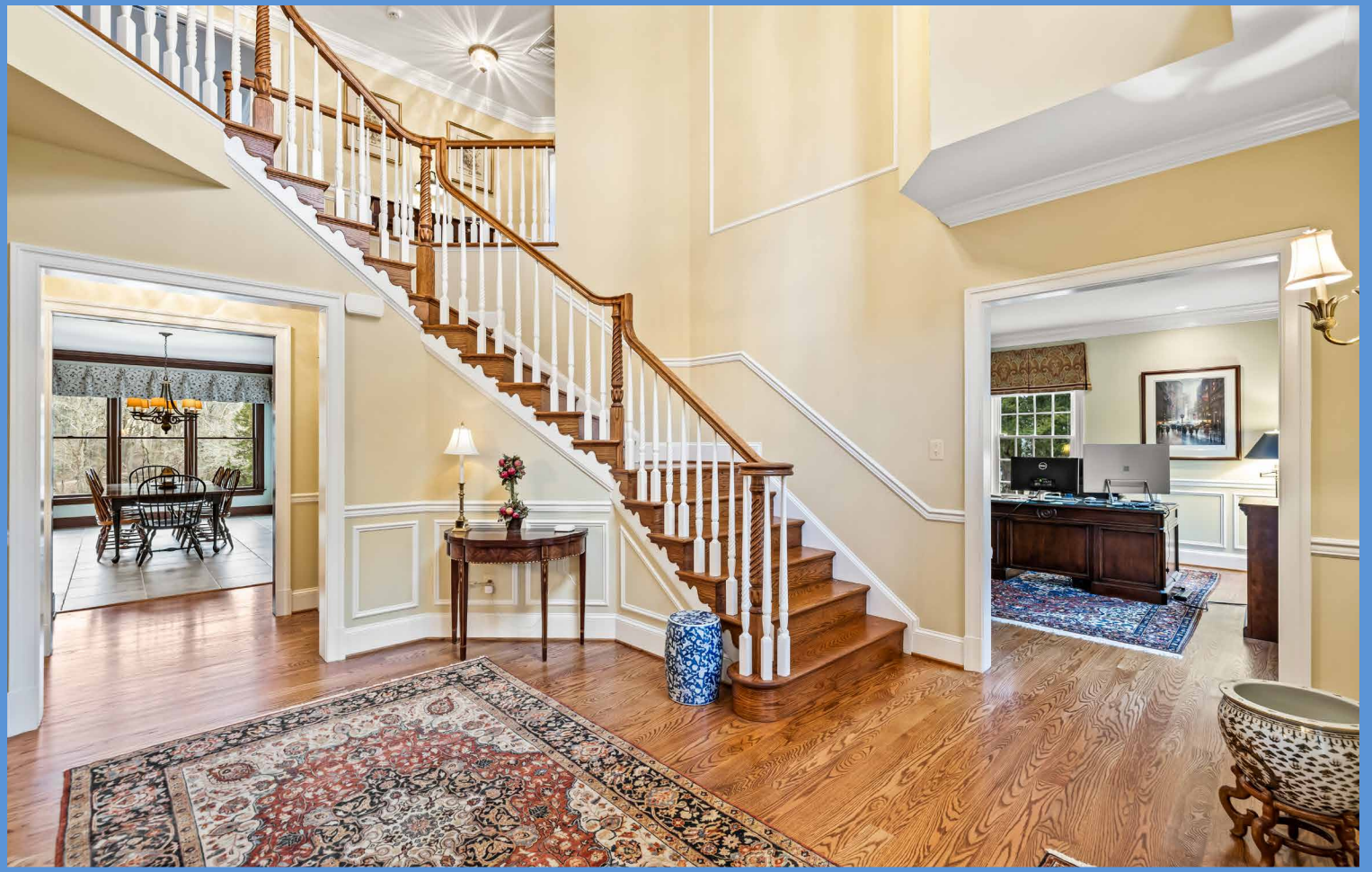
Karen@HubbleBisbee.com

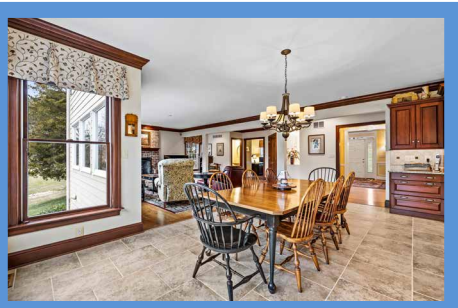
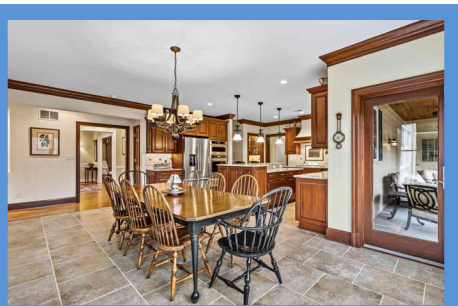
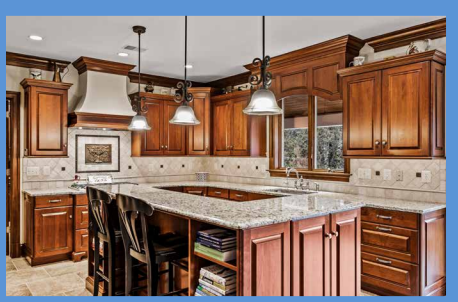
443-838-0438 (Mobile)

410-321-1411 (Office)

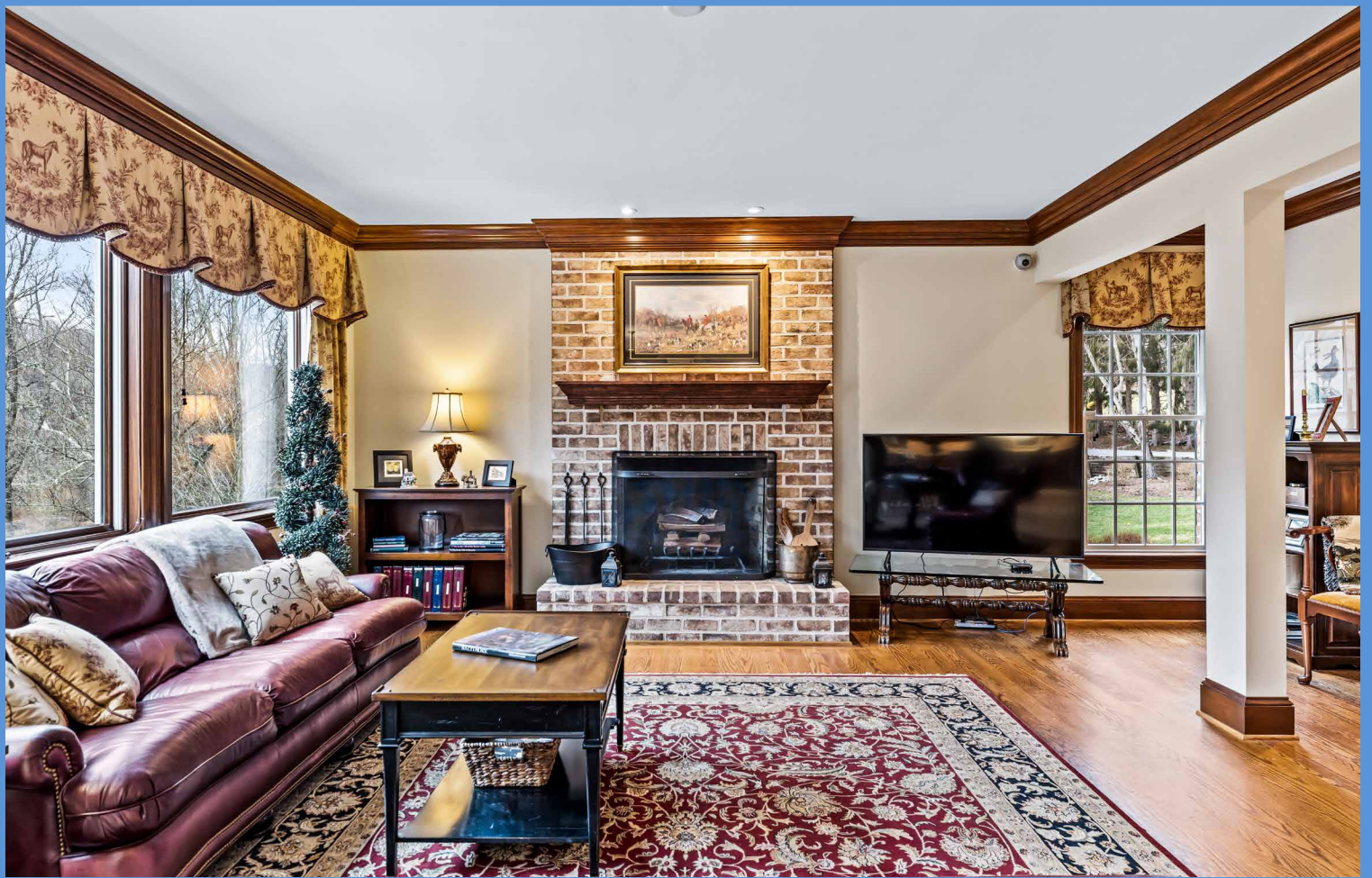
WWW.HUBBLEBISBEE.COM

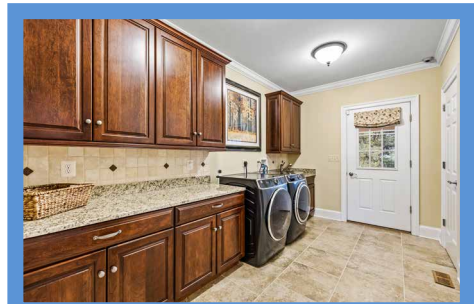
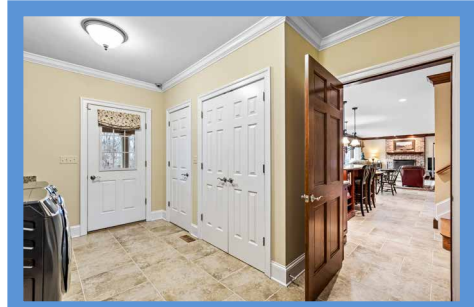
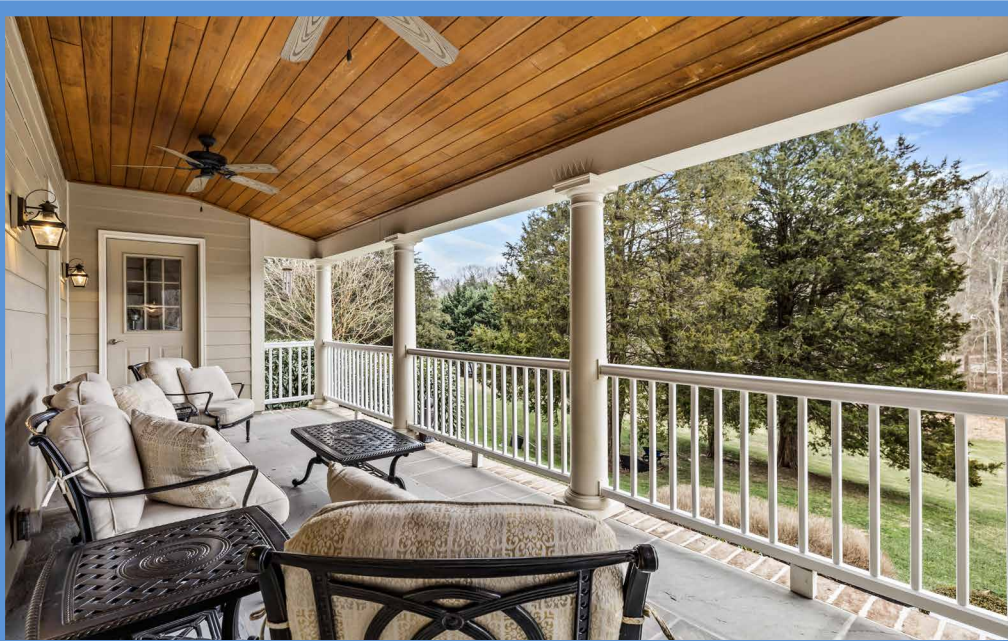
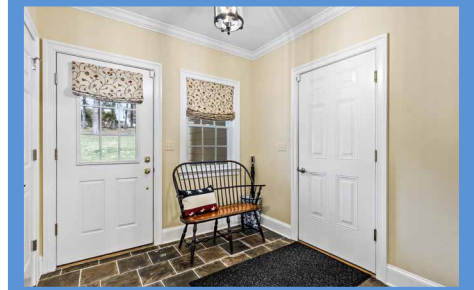


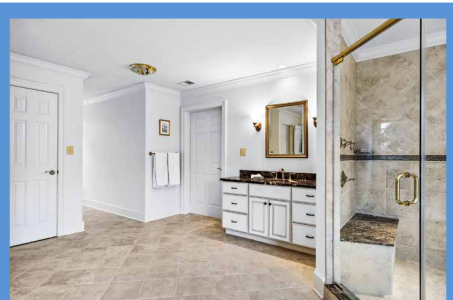
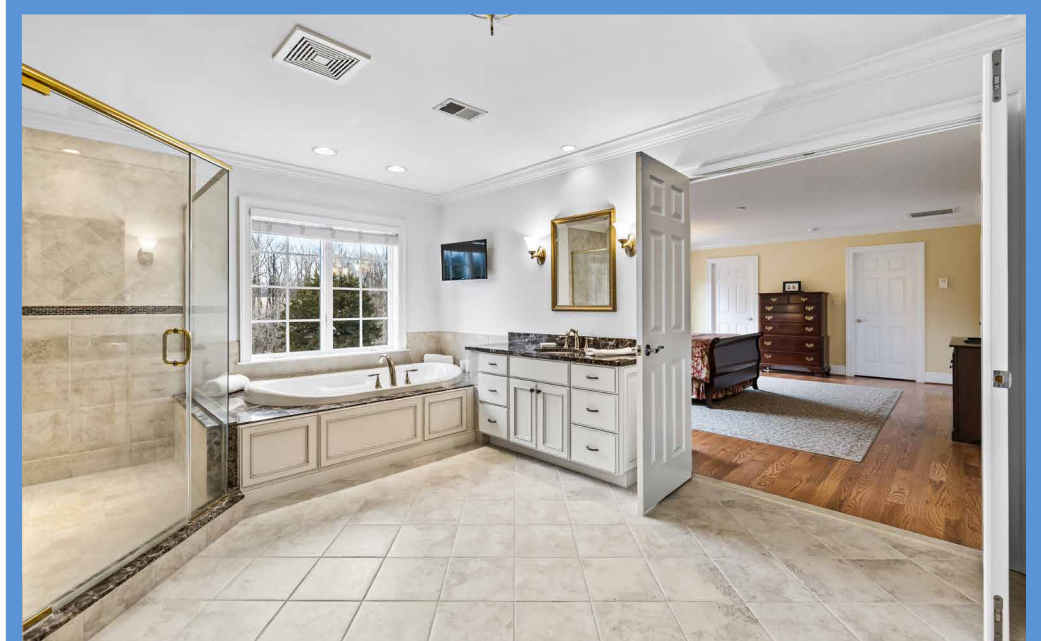
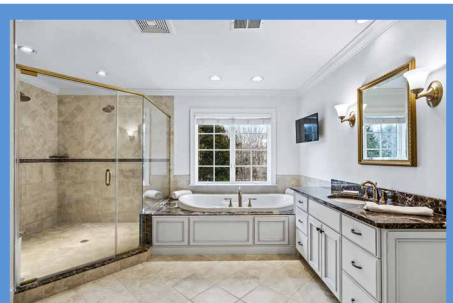
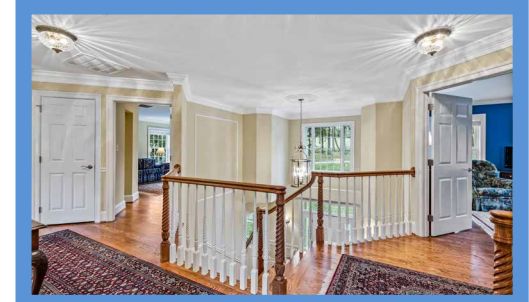
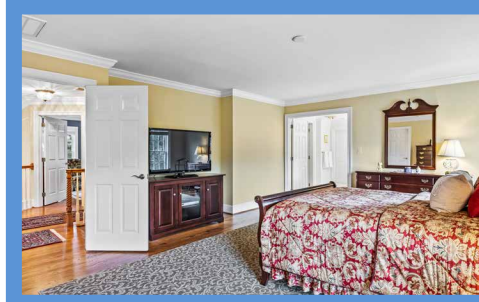
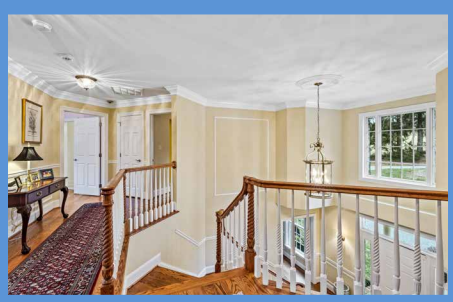


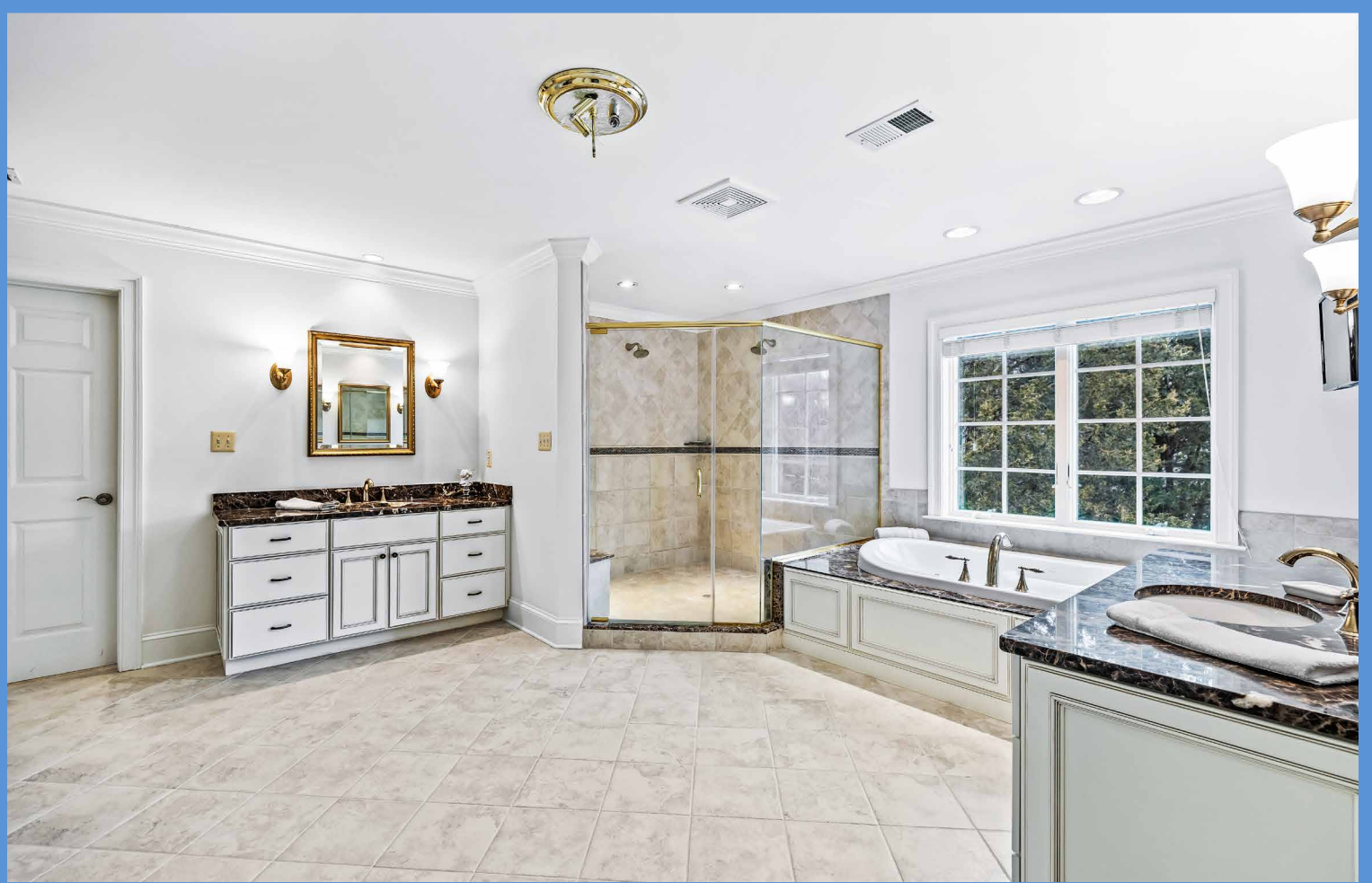




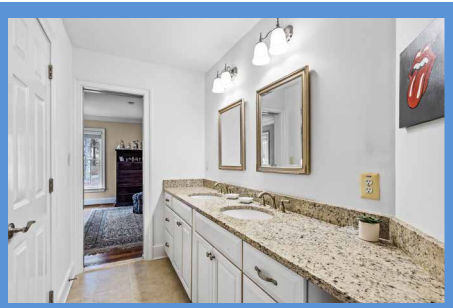
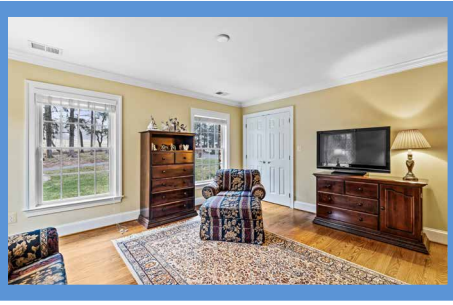
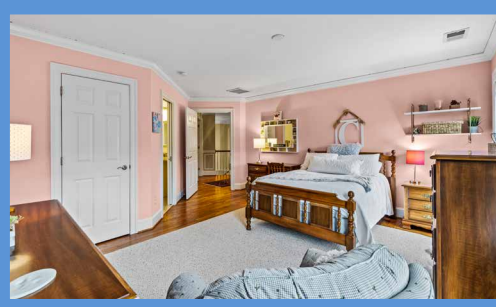












FOYER 18'3" X 13'6"

- Paneled entry door with transom and sidelights
- Two-story
- Hardwood flooring
- Open oak staircase with hardwood handrails and painted spindles
- Triple window above entry door
- Crown molding
- Chair rail with wainscot moldings
- Large brass hanging lantern with ceiling medallion
- Two wall sconce lights with shades
- Closet
- Cased portal to Kitchen
- Cased portals to Dining Room and Study

STUDY 15'5" X 14'0"

- Hardwood flooring
- Three windows with plantation blinds and custom valences
- Crown molding
- Chair rail with wainscot moldings
- Recessed light
- Wired for ceiling fan
- Cased portal to Family Room

DINING ROOM 18'4" X 16'0"

- Hardwood flooring
- Wood burning fireplace with Colonial mantel, brick surround and hearth
- Two windows with plantation blinds and custom drapery treatments
- Dentil crown molding
- Chair rail with wainscot moldings
- Cased portal to Butler's Pantry
- Waterford crystal 9-light chandelier with ceiling medallion- chandelier negotiable

FAMILY ROOM 23'9" X 20'6"

- Hardwood flooring
- Brick chimney with wood burning fireplace on raised hearth
- Picture window and additional window with plantation blinds and custom drapery treatments
- Powder Room with hardwood flooring, pedestal sink, oval mirror and overhead lighting, crown molding, ceiling light
- Double closet
- Illuminated wall niche
- Recessed lighting
- Wired for ceiling fan
- Open flow to Kitchen

KITCHEN 25'3" X 23'9"

- Designed by Kenwood Kitchens

- Stone finish ceramic tile floor
- WoodMode raised-panel cherry cabinetry including island/breakfast bar, pot-pan drawers, lazy-Susan base cabinet, range hood enclosure, roll-out trays, bookcases, dovetailed drawers and matching crown trim
- Granite counters
- Tumbled marble backsplashes with decorative panel at range
- KitchenAid stainless steel French door refrigerator with water-ice dispenser- 2022
- GE Monogram stainless steel 5-burner gas cooktop with Dacor range vent with lighting
- KitchenAid stainless steel wall oven, built-in microwave and warming drawer- 2024
- KitchenAid stainless steel dishwasher- Dec 2023
- Stainless steel undermount sink with reverse osmosis filtered water dispenser and Insinkerator disposal
- Large breakfast area with picture window and additional window with plantation blinds, custom valences and glazed door to Covered Porch
- Double window at sink
- Cherry finish crown molding
- Recessed lighting
- Under-cabinet lighting
- Wired for above-cabinet lighting
- Three frosted glass pendant lights above island
- Bronze finish 6-light chandelier with shades in breakfast area
- Open back staircase to 2nd Floor
- Access to Laundry Room
- Access to Butler's pantry

BUTLER'S PANTRY 6'3" X 4'8"

- WoodMode cherry cabinetry matching Kitchen including illuminated glass-door cabinets
- Granite counter
- Tumbled marble backsplash
- Zephyr wine cooler- Dec 2023
- Ceiling light
- Connects Kitchen to Dining Room

LAUNDRY ROOM 14'0" X 10'8"

- Stone finish ceramic tile floor
- Cherry raised-panel wall and base cabinets
- Granite counters with tumbled marble backsplashes
- Double pantry closet and additional closet
- Exit door with 9-pane window
- GE frontload washer and dryer- 2022
- Crown molding

- Two ceiling lights
- Cased portal to Mudroom

MUDROOM 8'7" X 8'1"

- Slate floor
- Window with Roman shade
- Exit door with 9-pane window and Roman shade
- Crown molding
- Closet
- Brass/glass pendant light
- Access to Garage

GARAGE

- Finished 3-car with 11-foot ceiling height
- Automatic door openers
- Four windows
- Exit door with 9-pane window
- GE refrigerator
- Frigidaire freezer
- Garden tool rack with pegboard panel
- Storage shelving

SECOND FLOOR

HALL

- Hardwood flooring
- Landing for main staircase with wraparound banister overlook
- Landing for back staircase
- Crown molding
- Two linen closets
- Three ceiling lights

PRIMARY BEDROOM

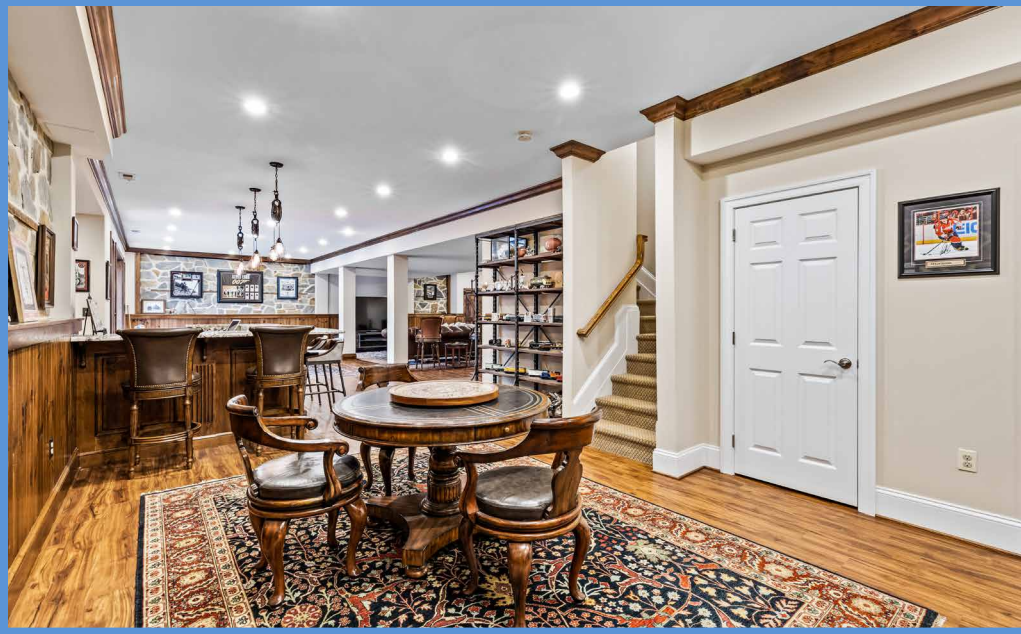
20'2" X 15'9"

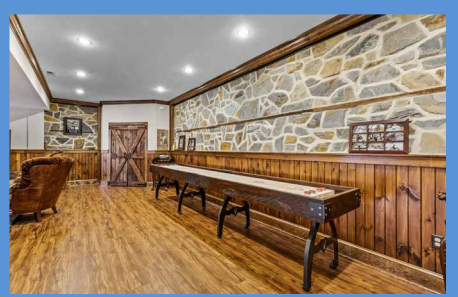
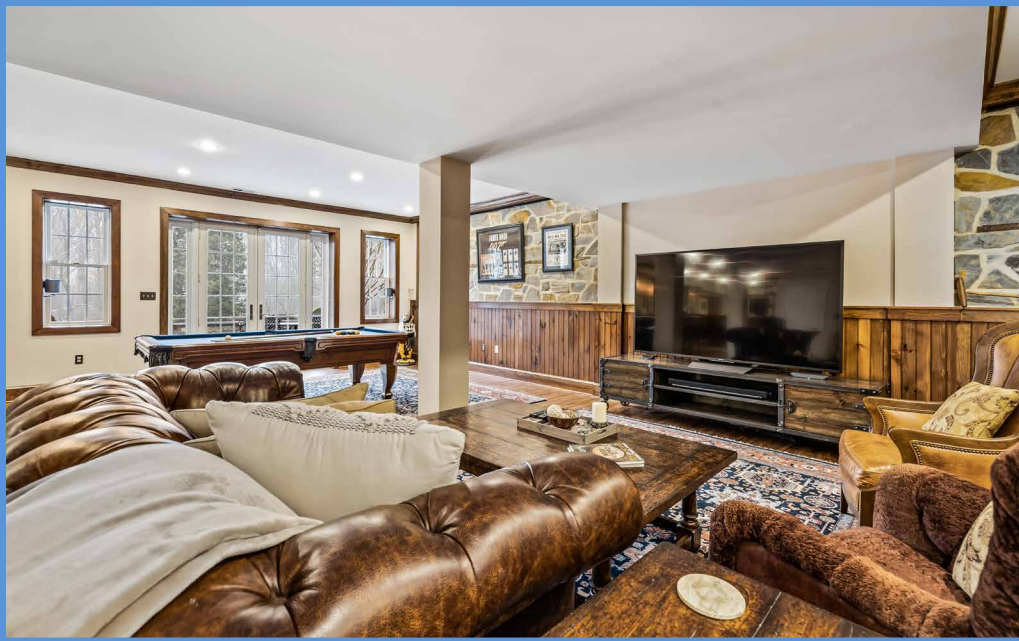
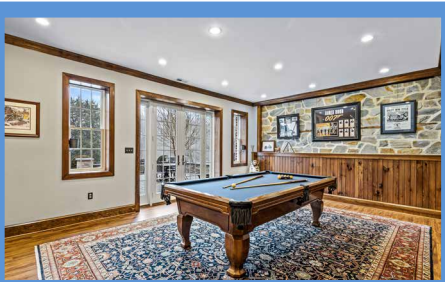
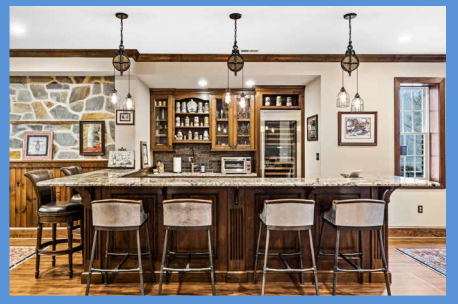
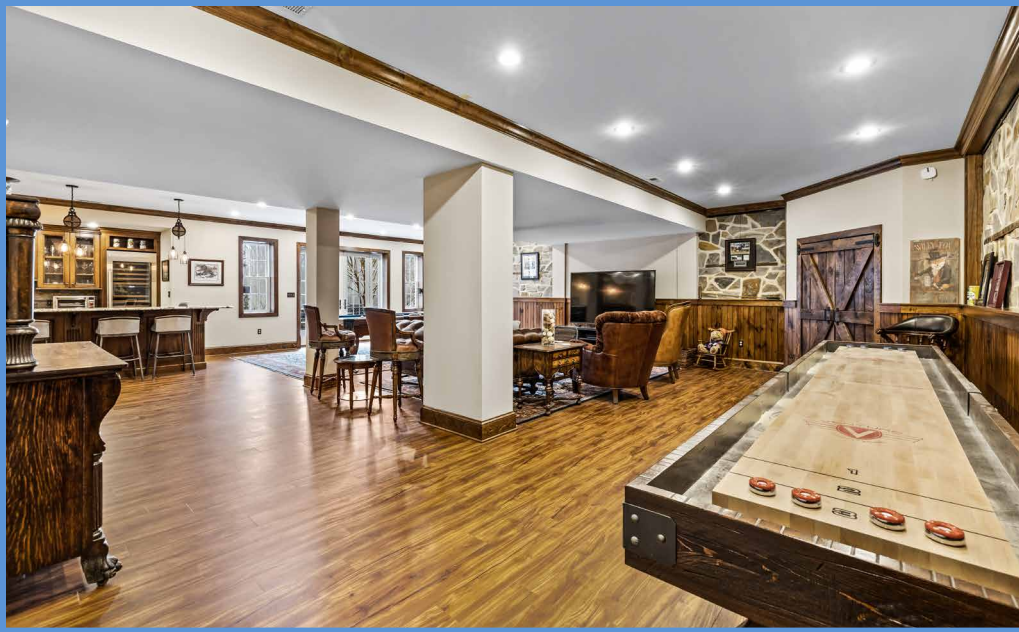
- Double door entry
- Hardwood flooring
- Two windows with plantation blinds
- Crown molding
- Two walk-in closets, 1 with attic access panel
- Wired for ceiling fan
- Double doors to Primary Bath

PRIMARY BATH

18'5" X 14'5"

- Marble finish floor and shower stall
- Two matching vanities each with marble top, Kohler undermount sink, framed mirror and wall sconce lighting
- Bain Ultra aerator soaking tub in platform with marble top
- Large shower stall with 2 shower heads, built-in bench and glass door enclosure
- Water closet
- Double window at tub with





- plantation blind
- Window with plantation blind in deep dormer recess
- Crown molding
- Linen closet
- LG wall mounted TV
- Recessed lighting
- Two ceiling light rough-ins
- Exhaust fans
- Access to Bonus Room (40' X 12') with wall-to-wall carpeting, 2 windows with plantation blinds and 3 ceiling lights

BEDROOM 2 15'11" X 12'5"

- Hardwood flooring
- Three windows with plantation blinds
- Crown molding
- Double closet
- Wired for ceiling fan
- Private Bath
- BATH
- Stone finish ceramic tile floor and tub surround to ceiling
- Vanity with granite top, Kohler undermount sink and overhead lighting
- Tub/shower combination with recessed light
- Linen closet
- Ceiling light/exhaust fan

BEDROOM 3 15'5" X 12'10"

- Vestibule entry with niche
- Hardwood flooring
- Three windows with plantation blinds
- Crown molding
- Double closet
- Wired for ceiling fan
- Pocket door to Shared Bath

BEDROOM 4 15'5" X 14'0"

- Vestibule entry
- Hardwood flooring
- Two windows with plantation blinds
- Crown molding
- Walk-in closet
- Wired for ceiling fan
- Pocket door to Shared Bath

SHARED BATH

- Divided
- Stone finish ceramic tile floor and tub surround
- Wide double vanity with granite top, Kohler undermount sinks, framed mirrors and overhead lighting

- Tub/shower combination with recessed light
- Exhaust fan

LOWER LEVEL

- Remodeled 2017

RECREATION ROOM

56'0" X 36'4" (IRREGULAR)

- Wood pattern laminate flooring
- Stone accent walls
- Beadboard wainscot
- French doors with sidelights to Patio
- Two windows flanking French doors
- Crown molding
- Two shelved closets
- Recessed lighting
- Sony wall mounted TV with sound bar
- Sliding barn door to unfinished storage room
- Double barn doors to utility closet with electric service panels, home security system and Tesla standby generator system
- Wet Bar
- Billiard table negotiable

WET BAR 12'0" X 10'0"

- Designed by Kenwood Kitchens
- Wood Mode cherry wall and base cabinets including glass-door cabinets
- Granite counters
- Metal/glass tile backsplashes
- Sub-Zero full size temperature zoned wine cooler
- Sub-Zero under-counter refrigerator
- Wolf stainless steel warming drawer
- KitchenAid icemaker
- KitchenAid stainless steel dishwasher
- Stainless steel undermount sink
- Industrial pulley pendant lights
- Under-cabinet lighting

BATH

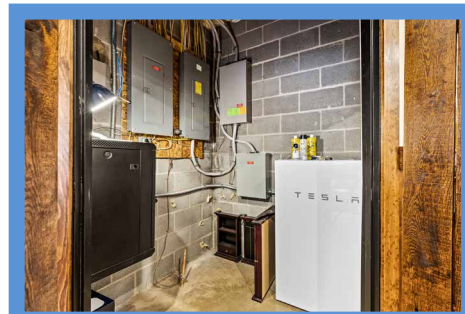
- Marble floor
- Pedestal sink with framed mirror and overhead lighting
- Glass enclosed marble shower stall with borders, mosaic marble floor and recessed light
- Built-in linen shelving with base cabinet
- Crown molding
- Exhaust fan

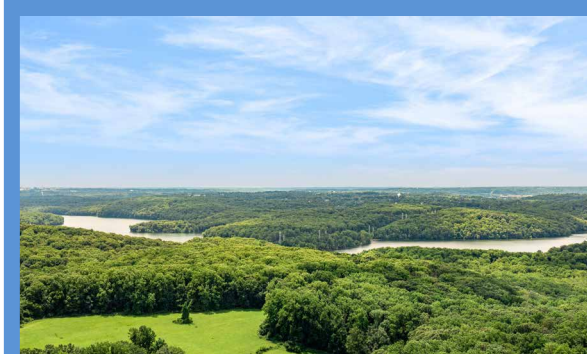
UTILITY ROOM

- Unfinished
- Carrier Infinity high-efficiency Hybrid system heat pumps with propane gas backup
- Bradford White propane gas-fired water heater- 2023
- Well water tank and conditioning system- upgraded well pump- 2016
- Sump pump
- Wooden storage shelving

EXTERIOR

- Custom built home by Hagan and Hamilton
- Old Carolina handmade brick with HardiePlank siding
- Forty-year asphalt shingle roof
- Roof solar panels with battery backup
- Bluestone/brick sidewalk and covered front porch with classic columns
- Bluestone/brick sidewalk and covered porch at Mud Room with classic columns
- Boulder garden steps and walkways
- Covered bluestone/brick back porch with classic columns, vinyl railings, beadboard ceiling and ceiling fans
- Stone paver block patio (42' X 26') and garden walls with access from Recreation Room
- Round gravel seating area with round stone fire-pit
- Total 5.23 professionally landscaped and maintained acres backing to trees with Overshot Run in the back yard





*Hubble
Bisbee*

CHRISTIE'S
INTERNATIONAL REAL ESTATE

GREEN SPRING
STATION

410-321-1411

ANNAPOLIS

410-321-1833

