

*Hubble  
Bisbee*

**CHRISTIE'S**  
INTERNATIONAL REAL ESTATE

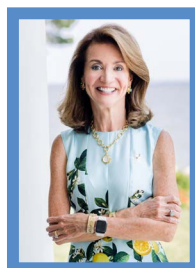


**THE RITZ-CARLTON RESIDENCES**  
**801 KEY HIGHWAY, UNIT 350**



**LOCATIONS**

2330 W Joppa Road, Suite 104  
Lutherville, MD 21093  
181 Harry S Truman Pkwy Ste 200  
Annapolis, MD 21401

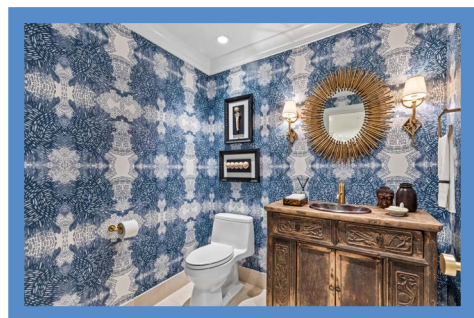
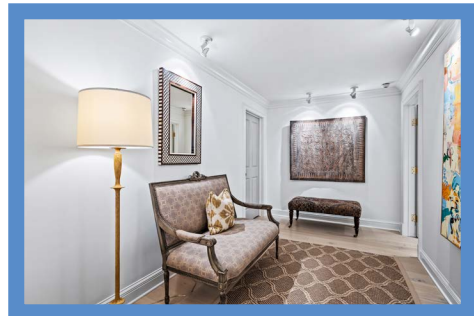
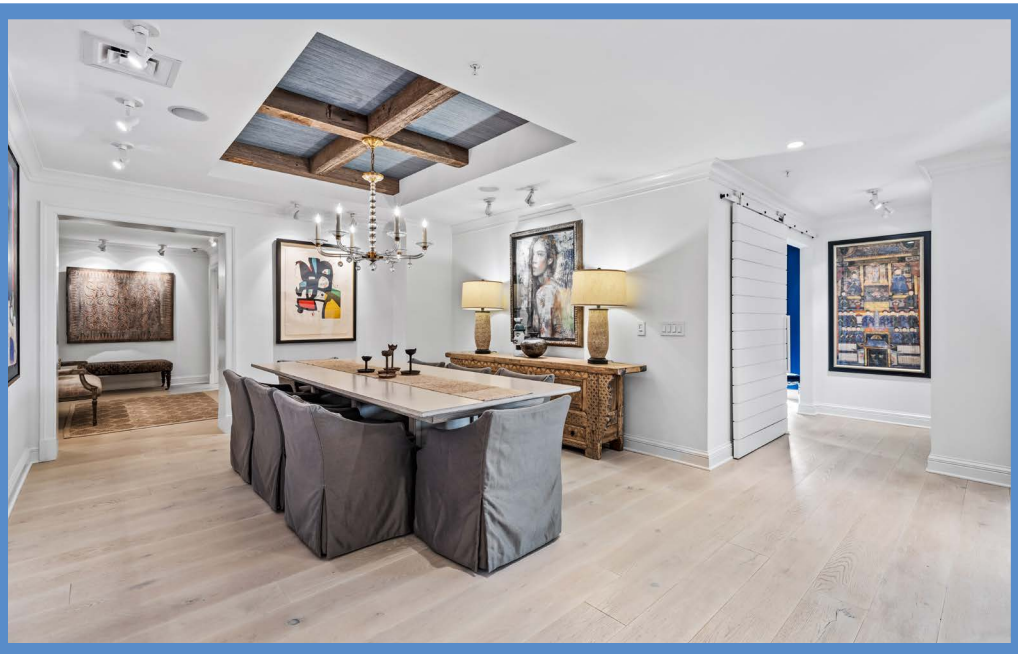


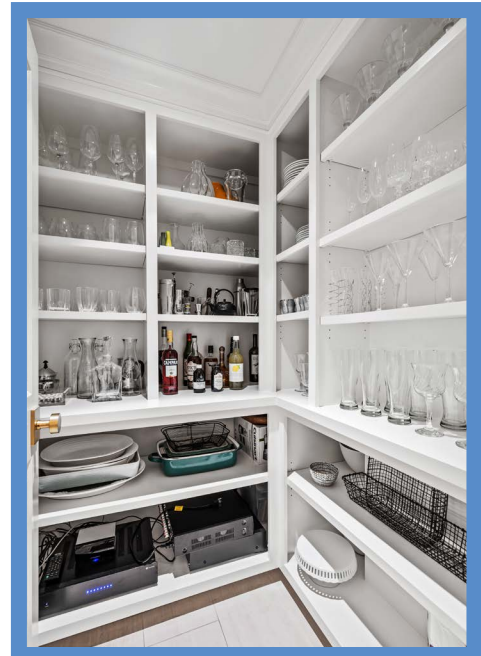
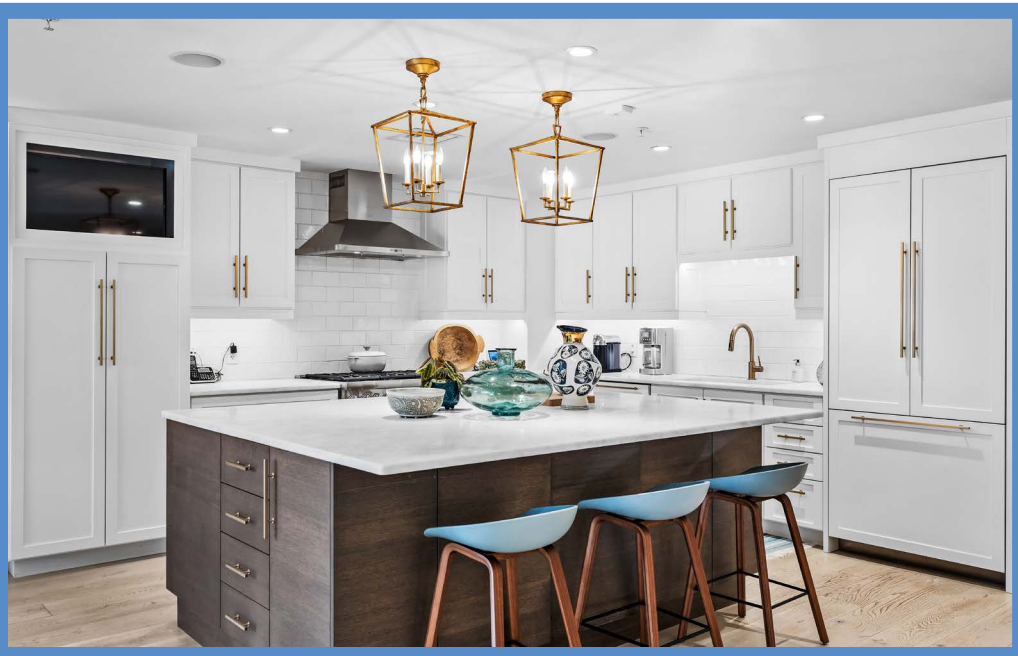
**KAREN HUBBLE BISBEE**

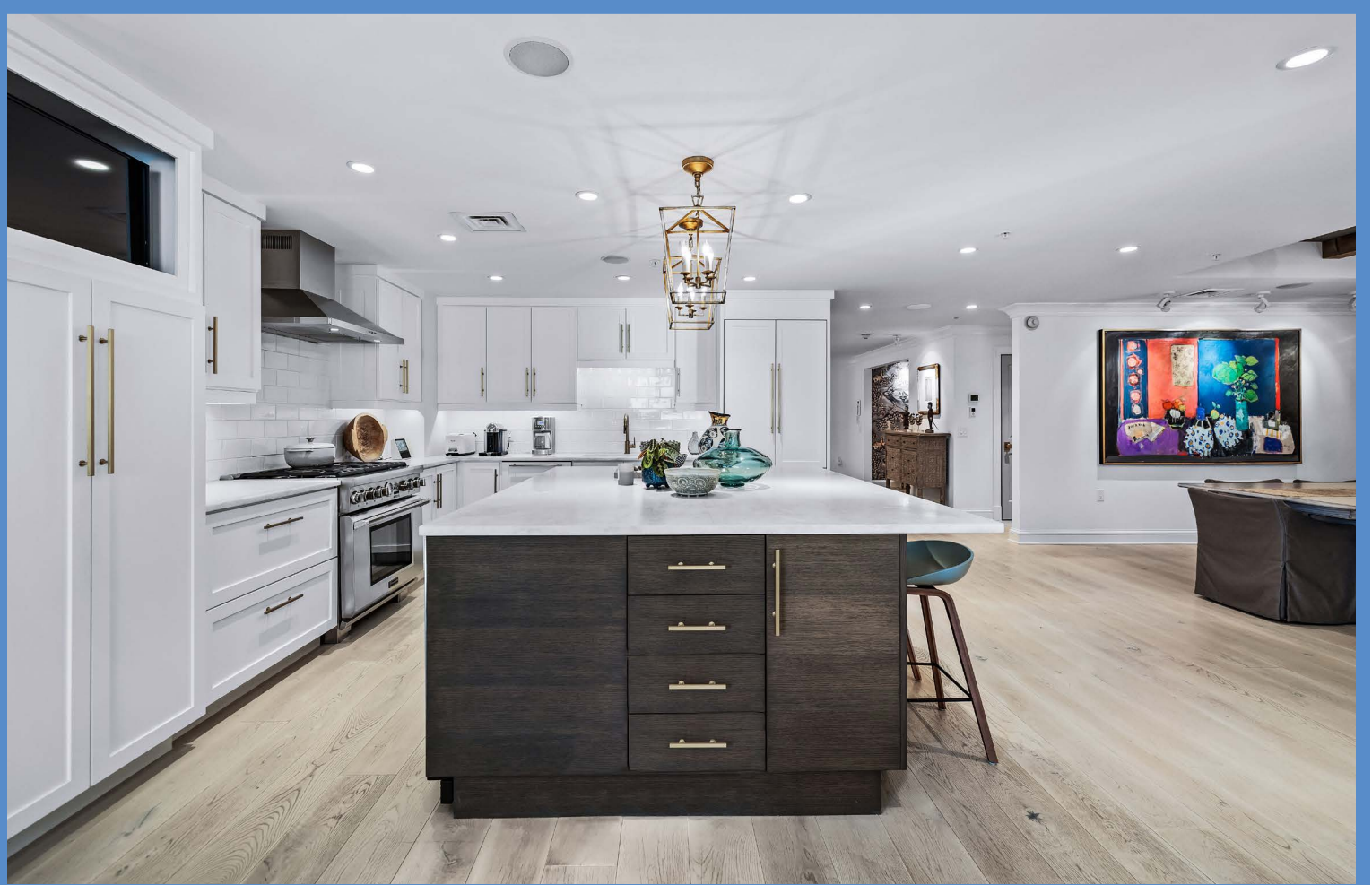
Principal, Associate Broker, ABR, GRI  
Karen@HubbleBisbee.com  
443-838-0438 (Mobile)  
410-321-1411 (Office)

[WWW.HUBBLEBISBEE.COM](http://WWW.HUBBLEBISBEE.COM)













FOYER 9'5" X 8'0"

- Private elevator access
- Additional access from building hallway
- Designer ceramic tile floor
- Tray ceiling with crown molding
- Art lighting
- Flows to Hall
- Ceiling light excluded

HALL

- White oak flooring
- Crown molding
- Art lighting
- Recessed lighting
- Built-in ceiling speakers
- Passage to Primary Bedroom
- Access to Laundry Room
- Open flow to Dining Room and Kitchen
- Passage to Powder Room with custom fitted closet

POWDER ROOM

- Marble floor
- Antique chest vanity with hammered copper sink
- Kohler flush
- Crown molding
- Two wall sconce lights with shades at vanity
- Recessed lighting
- Exhaust fan
- Mirror excluded

DINING ROOM 13'3" X 12'7"

- White oak flooring
- Tray ceiling with rough-hewn beams
- Crown molding
- Art lighting
- Built-in ceiling speakers
- Wide cased portal to Hall at Bedroom 2
- Flows to Kitchen
- Chandelier excluded

KITCHEN 20'0" X 17'7"

- White oak flooring
- Waltersdorff MFG fully custom crafted Shaker style wood cabinets in white finish including pantry cabinet with roll-out trays, pot-pan drawers, TV cabinet, dovetailed drawers and soft-close cabinets and drawers
- Xylem wood laminate island/ breakfast bar with roll-out trash/ recycle bins, base cabinets and drawers
- Marble counters
- Subway tile backsplashes

- Thermador commercial grade stainless steel 6-burner gas range and range hood with lighting
- Thermador built-in microwave in island
- Thermador French door refrigerator with matching front panels
- U-Line under-counter wine cooler
- Thermador dishwasher with matching front panel
- Kohler ceramic undermount sink with disposal
- Samsung TV
- Recessed lighting
- Two brass lantern pendant lights above island
- Under-cabinet lighting
- Built-in ceiling speakers
- Hall to Den/Bedroom 3
- Open flow to Living Room

LIVING ROOM 20'0" X 18'6"

- White oak flooring
- Shiplap paneled wall with gas 'ribbon' fireplace on full-width raised marble hearth and marble surround
- Sliding doors to Deck with custom drapery treatment
- Picture window with woven Roman shade and custom drapery treatment
- Additional window with custom Roman shade
- Built-up crown molding
- Art lighting
- Built-in ceiling speakers
- Samsung wall mounted TV
- Chandelier excluded

DEN/BEDROOM 3 12'4" X 12'3"

- Custom sliding barn door access
- White oak flooring
- Picture window with custom Roman shade
- Built-up crown molding
- Art lighting
- Wall niche with Samsung wall mounted TV
- Custom fitted walk-in closet
- Private Bath
- Pendant light excluded

BATH

- Marble floor
- Modern vanity with marble top, Kohler undermount sink and wall sconce lighting with shades
- Ceramic tiled shower stall with river rock floor, built-in bench and glass door enclosure
- Kohler flush
- Built-up crown molding
- Recessed lighting

- Exhaust fan
- Mirror excluded

PRIMARY BEDROOM 22'4" X 16'9"

- Private hall entry with access to Dressing Room and Primary Bath
- White oak flooring
- Four-sash window with woven shades
- Picture window with custom Roman shade
- Built-up crown molding
- Recessed lighting
- Two wall sconce lights with shades
- Wood 6-light chandelier
- Built-in ceiling speakers
- Drapery treatment excluded

DRESSING ROOM 14'4" X 12'0"

- White oak flooring
- Tray ceiling with crown molding
- Extensive custom fitted wardrobe cabinetry including island with marble top, open clothes racks, open shelving, closets, drawers, jewelry drawers, upper cabinets, storage cabinets and matching crown trim
- Recessed lighting
- Chandelier excluded

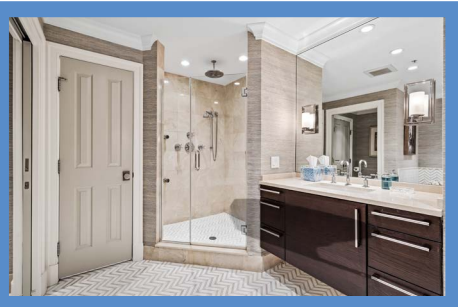
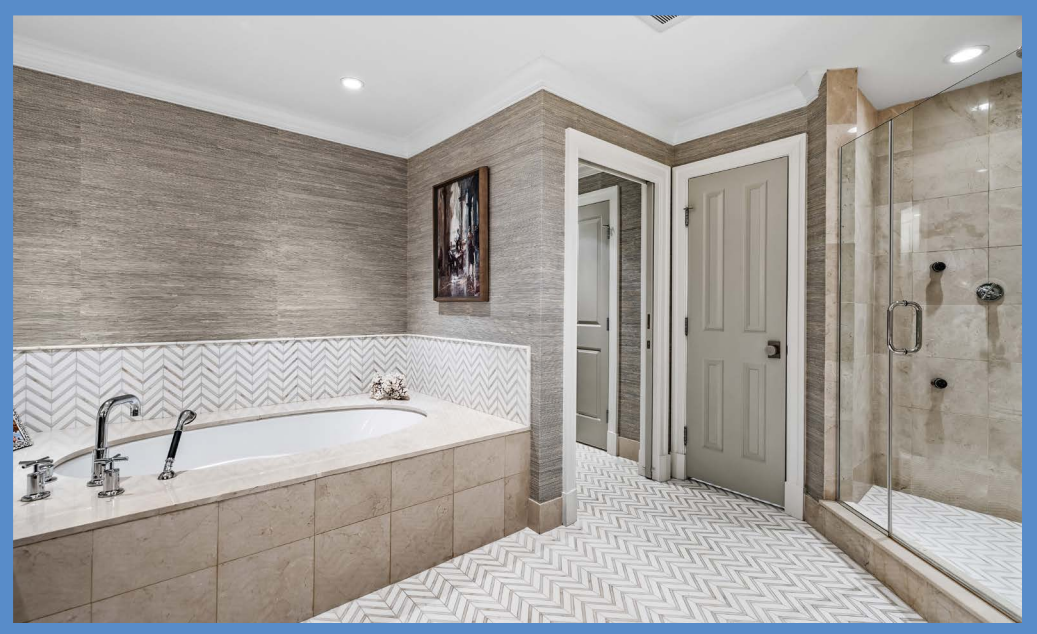
PRIMARY BATH 14'11" X 13'2"

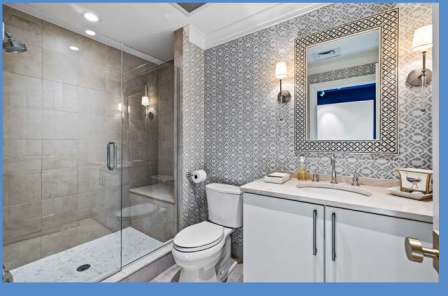
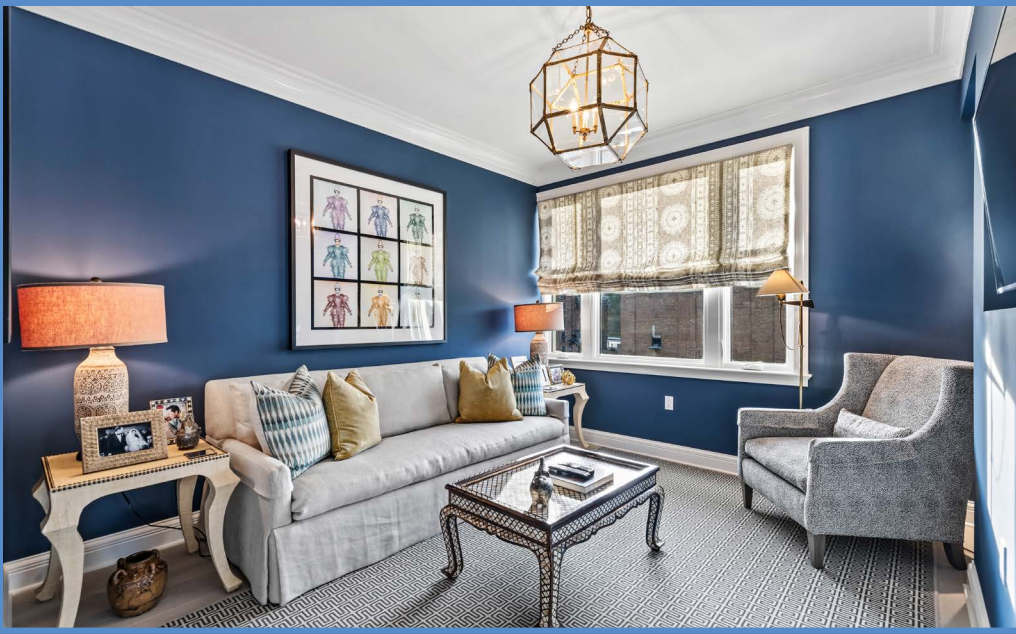
- Chevron pattern marble floor, tub surround and shower stall floor
- Matching modern vanities each with marble top, Kohler undermount sink, plate glass mirror and mirror-mounted wall sconce lights
- Jacuzzi aerator spa tub in marble platform with handheld shower
- Shower stall with marble walls, built-in bench, rainshower, additional shower, 2 body sprays, wall niche and glass door enclosure
- Water closet with Kohler flush and double linen closet
- Additional linen closet
- Crown molding
- Recessed lighting
- Exhaust fans

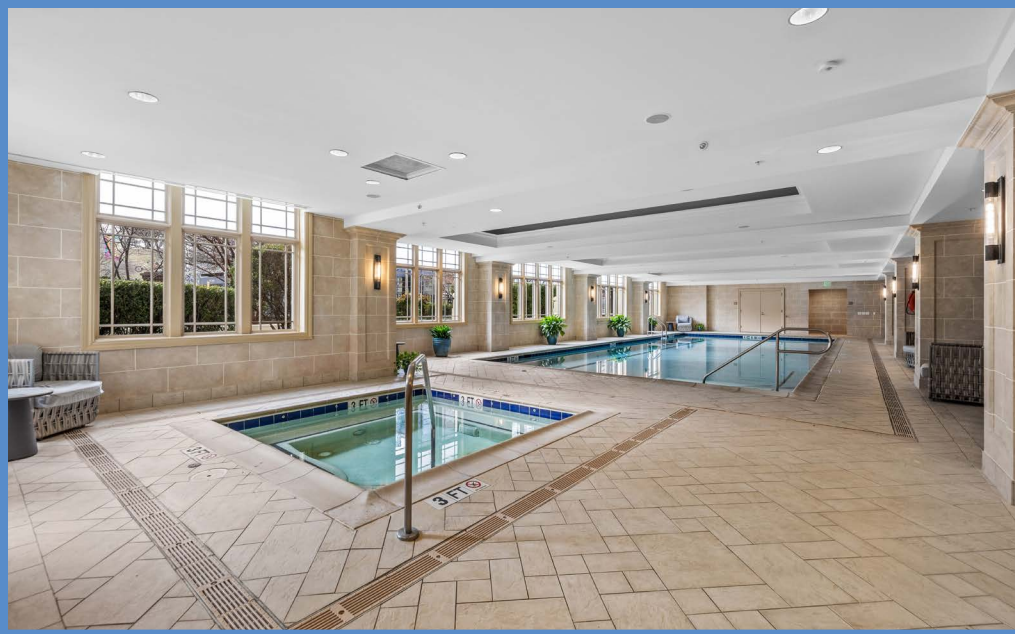
HALL 13'10" X 7'11"

- Wide cased portal access from Dining Room
- White oak flooring
- Built-up crown molding
- Custom fitted walk-in storage closet (13'10" X 5'6")









- Art lighting
- Access to Bedroom 2

BEDROOM 2 16'8" X 15'8"

- Vestibule entry with access to private Bath
- White oak flooring
- Picture window and additional window with woven shades
- Built-up crown molding
- Oversize double closet
- Recessed lighting
- LG wall mounted TV
- Chandelier excluded

BATH

- Marble floor
- Modern vanity with marble top, Kohler undermount sink, plate glass mirror and mirror-mounted wall sconce lights with shades
- Tub/shower combination with subway tile surround and glass doors
- Kohler flush
- Crown molding
- Open linen shelving
- Recessed lighting
- Exhaust fan

LAUNDRY ROOM 10'7" X 6'2"

- Porcelain tile floor
- Base cabinet, wall cabinets and storage cabinet
- Quartz counter includes folding counter above washer and dryer
- Kohler undermount ceramic sink
- Walk-in custom fitted storage closet with crown molding, recessed lighting and home audio controls
- Samsung washer and dryer
- Recessed lighting and 2 ceiling lights

DECK 16'8" X 12'11"

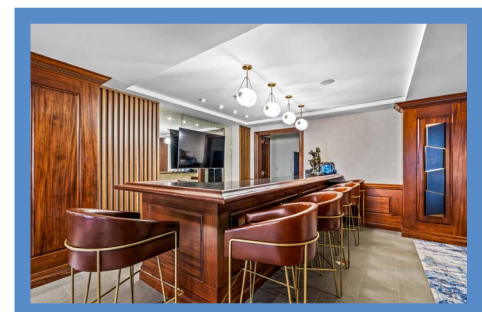
- Porcelain tile floor
- Metal decorative railings
- Sliding doors from Living Room
- Views of Federal Hill and Visionary Arts Museum

PARKING

- One deeded garage space located near elevator to unit and 1 valet parking space

RITZ-CARLTON AMENITIES

- Secure building with 24-hour concierge
- Valet parking
- Elegantly appointed lobby including seating area at fireplace
- Indoor Pool and Hot Tub/Spa
- Fitness Center
- Resident's Lounge
- Theater
- Meeting and Party Rooms
- Beautifully landscaped grounds and gardens just steps away from the Promenade, Federal Hill and the Inner Harbor





*Hubble  
Bisbee*

**CHRISTIE'S**  
INTERNATIONAL REAL ESTATE

GREEN SPRING  
STATION  
410-321-1411



ANNAPOLIS  
410-321-1833

