

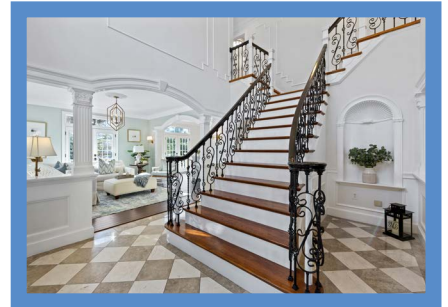
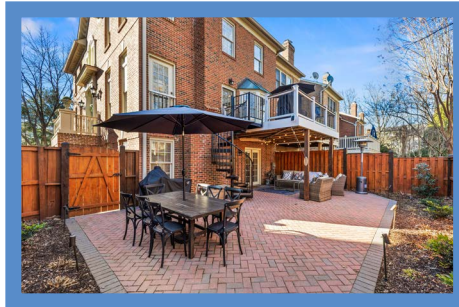
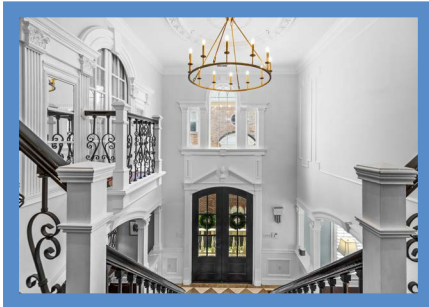
*Hubble
Bisbee*

CHRISTIE'S
INTERNATIONAL REAL ESTATE



DISCOVERLY ADVENTURE

9974 FOXBOROUGH CIRCLE



JAN PETERKA

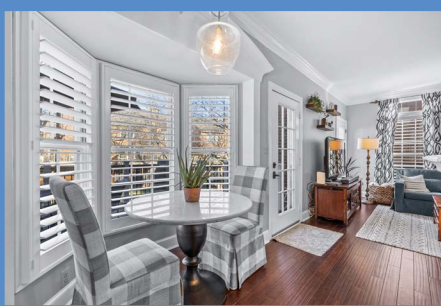
Realtor ®
JanPeterka@HubbleBisbee.com
(410) 627-8793 (Mobile)

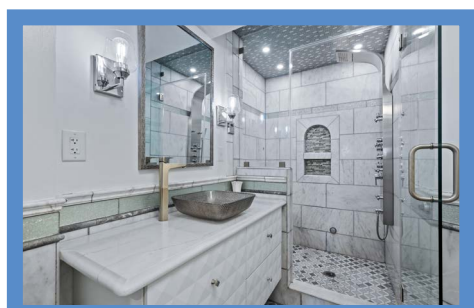
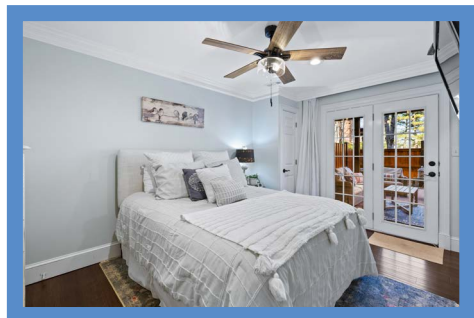
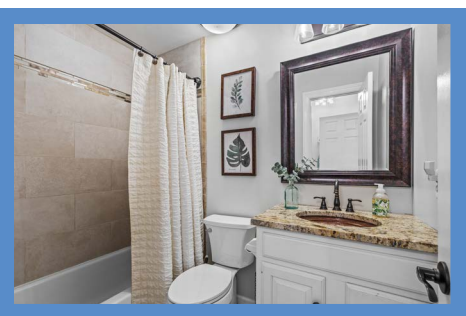
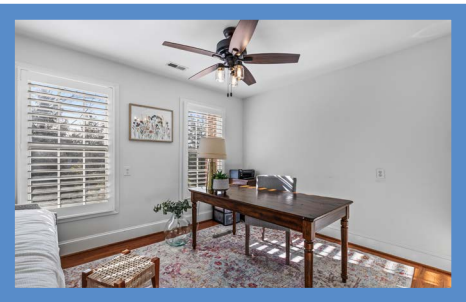
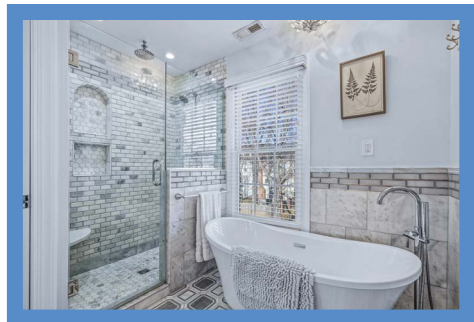
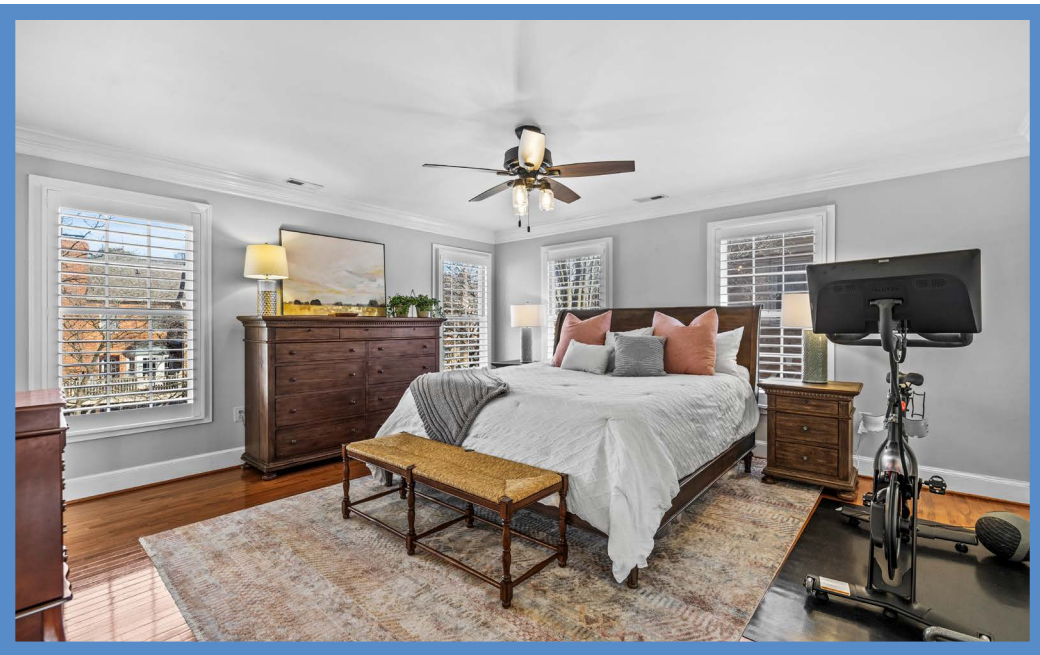
PETER DIMITRIADES

Realtor ®
Pete@HubbleBisbee.com
(443) 226-0651 (Mobile)



WWW.HUBBLEBISBEE.COM | (410) 321-1411 (OFFICE)





MAIN LEVEL

FOYER 13'6" X 12'3"

- Architectural cased arched mahogany double door entry with beveled glass and Palladian window above
- Two-story
- Marble floor
- Open hardwood staircase with wrought iron railings with hardwood handrails
- Upper level Palladian window with balcony matching staircase and French pocket doors from Primary Bedroom
- Built-up crown molding
- Chair rail with wainscot moldings
- Upper level wall panel moldings
- Arched shell-top wall niche
- Round brass 12-light chandelier with ceiling medallion
- Electronic chandelier lift
- Cased archway to Hall
- Architectural cased keystone archways with columns to Living Room and Family Room

LIVING ROOM 15'1" X 13'6"

- Hardwood flooring
- French doors to Balcony
- Two windows with plantation shutters
- Built-up crown molding
- Brass 4-light chandelier with ceiling medallion
- Two brass double wall sconce lights
- Architectural cased keystone archway with columns to Dining Room

DINING ROOM 15'0" X 11'2"

- Hardwood flooring
- French doors to Balcony
- Built-up crown molding
- Chair rail
- Brass 12-light chandelier with ceiling medallion
- Access to Hall with marble floor, coat closet, staircase to Ground Level, access to Powder Room and French doors to Kitchen

FAMILY ROOM 15'11" X 13'6"

- Architectural cased archway with columns from Foyer
- Hardwood flooring
- Two glazed doors to Deck
- Two windows with plantation shutters
- Built-up crown molding
- Ceiling fan
- Open flow to Kitchen

KITCHEN 21'6" X 11'6"

- Hardwood flooring
- Kapri raised-panel wood cabinetry including illuminated glass-door cabinets, peninsula, custom range hood enclosure, 42" wall cabinets, roll-out trays, lazy-Susan base cabinet, pull-out trash/recycle bins and dovetailed drawers
- Quartz counters
- Marble/glass tile backsplashes
- Frigidaire stainless steel French door refrigerator
- Frigidaire stainless steel 5-burner gas range with range hood vent with lighting
- KitchenAid stainless steel wall oven
- KitchenAid stainless steel built in microwave/convection oven
- GE stainless steel dishwasher
- Stainless steel undermount sink with disposal
- Stainless steel undermount prep sink with disposal
- Breakfast area in bay window with plantation shutters and glass globe pendant light
- Built-up crown molding
- Recessed lighting
- Under-cabinet lighting
- Pantry closet
- French doors to Back Hall

POWDER ROOM

- Marble floor
- Modern vanity with quartz top and undermount sink
- Crown molding
- Wall sconce lighting
- Exhaust fan

UPPER LEVEL

HALL

- Split landing for staircase with banister overlooks to Foyer

- Hardwood flooring
- Built-up crown molding
- Wall panel moldings
- Laundry closet with Samsung washer and dryer, ceramic tile floor and wall cabinets
- Recessed lighting
- Linen closet

PRIMARY BEDROOM 16'0" X 15'2"

- Hardwood flooring
- Four windows with plantation shutters
- Palladian interior window with French pocket doors to balcony overlooking Foyer
- Built-up crown molding
- Ceiling fan with lighting
- Wall mount TV excluded, bracket to remain

PRIMARY BATH 9'6" X 9'5"

- Patterned marble floor
- Marble subway tile wainscot and shower stall with glass tile accents
- Vanity with marble top, undermount sinks and framed mirrors flanked with vertical lighting
- Free standing soaking tub with handheld shower
- Shower stall with rainshower, additional shower, 3 body sprays, built-in bench, arched wall niche, recessed lighting and glass door enclosure
- Water closet with pocket door and ceiling light
- Window with pleated shade
- Crystal ceiling light
- Exhaust fan

DRESSING ROOM 11'10" X 9'6"

- Patterned marble floor- same as Bath
- Custom fitted wardrobe cabinetry
- Full-length dressing mirror with overhead lighting
- Ceiling light

BEDROOM 2 15'1" X 11'7"

- Hardwood flooring
- Four windows with plantation shutters
- Crown molding
- Double closet
- Ceiling fan with lighting

DEN 13'2" X 10'0"

- Hardwood flooring
- Two windows with plantation shutters
- Ceiling fan with lighting

HALL BATH

- Ceramic tile floor
- Vanity with granite top, copper undermount sink, framed mirror and overhead lighting
- Tub/shower combination with porcelain tile surround with glass tile accents and recessed light
- Ceiling light/exhaust fan

GROUND LEVEL

FOYER 13'7" X 8'1"

- Paneled entry door with window and wrought iron grill
- Marble floor
- Open staircase with wrought iron railings with hardwood handrails and carpet runner
- Built-up crown molding
- Chair rail with wainscot moldings
- Architectural corner pilasters
- Ceiling light
- Recessed lighting
- Wall sconce light
- Closet
- Access to Garage
- Open flow to Ground Level Living Room with seating at Wet Bar/Kitchenette

FAMILY ROOM 15'7" X 14'10"

- Hardwood flooring
- Gas fireplace with traditional wood mantel and marble surround
- Four windows with plantation blinds and custom drapery treatments
- Bulkhead with recessed lighting and built-up crown molding concealing ambient lighting
- Ceiling fan
- Recessed lighting
- Built-in surround sound with Yamaha speakers
- Access to Wet Bar
- Access to Bath

- Access to Bedroom 4
- Wall mounted TV excluded, bracket remains

WET BAR 8'1" X 5'9"

- Marble floor
- Architectural details including keystone archways
- Marble counters with mirror backsplashes
- Glass door cabinets
- Base cabinets
- Open shelving and glass shelving
- Stainless steel undermount sink with Insinkerator disposal
- Magic Chef under-counter refrigerator
- Under-counter wine cooler

BEDROOM 3 14'5" X 9'11"

- Hardwood flooring
- Atrium door to Patio with drapery treatment
- Built-up crown molding
- Two closets- 1 with electric service panel
- Recessed lighting
- Ceiling fan with light
- Access to Bath
- Wall mounted TV excluded, bracket remains

BATH

- Dual access
- Marble floor, wainscot and shower stall with glass tile accents
- Cantilevered vanity with marble top, vessel sink, framed mirror, wall sconce lighting and tread lighting
- Steam shower stall with rainfall shower, additional handheld shower, 6 body jets, built-in bench and arched niche, recessed lighting and glass door enclosure
- Ceiling light
- Exhaust fan

GARAGE 25'0" X 19'2"

- Two-car
- Finished
- Automatic door openers
- Window
- GE refrigerator
- Utility room with gas-fired tankless hot water supply and steam shower mechanical

EXTERIOR

- Georgian style, all brick, end-of-group townhome thoroughly renovated 2019
- Brick steps to brick porch at main entry with classic balustrades
- Colonial doorecase at main entry with Palladian window above
- Paneled entry door with window and wrought iron grill to Ground Level
- Balconies with classic balustrades accessed by French doors from Living Room and Dining Room
- Brick walkways
- Elevated deck (17'7" X 10'10") with engineered wood decking, custom spiral staircase to Patio and dual access from Family Room- 2022
- Paver brick patio (35' X 23'7") partially covered by deck with access from ground level Bedroom 3- 2021
- Fenced back yard with border gardens framing patio
- Stacked stone garden wall along property border with lamp posts

