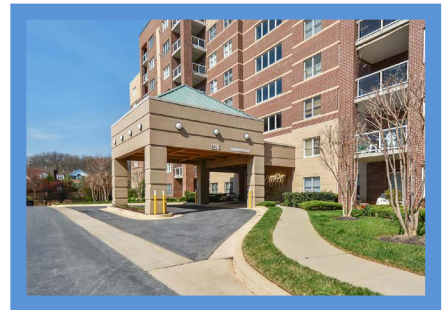
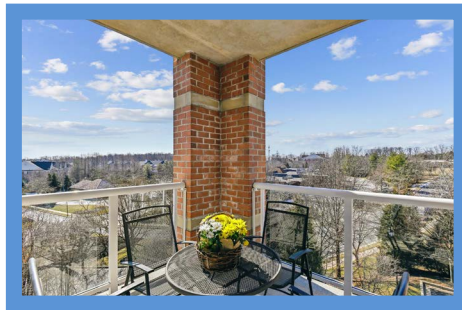
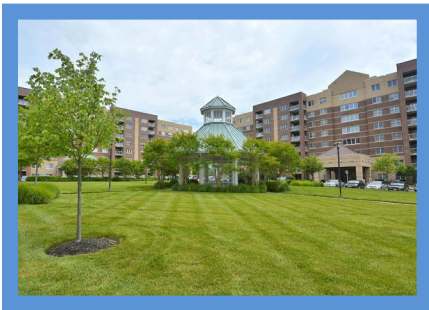


*Hubble
Bisbee*

CHRISTIE'S
INTERNATIONAL REAL ESTATE



MAYS CHAPEL NORTH
12236 ROUNDWOOD ROAD #303



LOCATIONS

2330 W Joppa Road, Suite 104
Lutherville, MD 21093

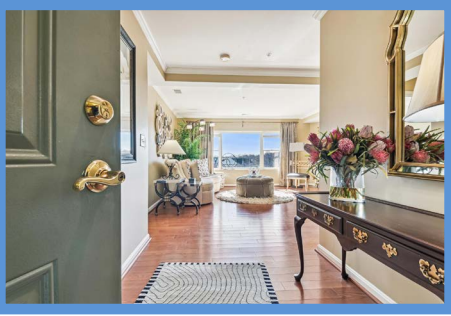
181 Harry S Truman Pkwy Ste 200
Annapolis, MD 21401

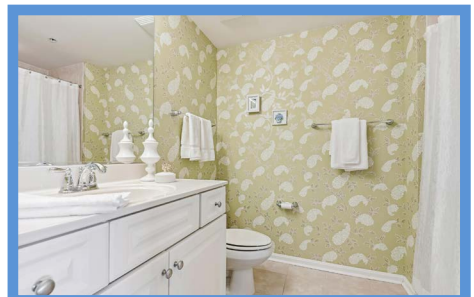
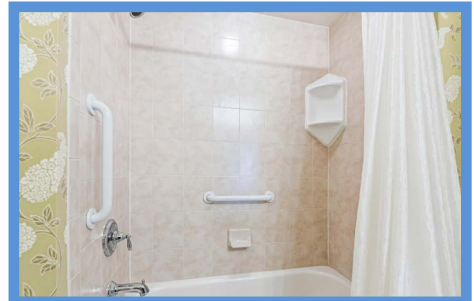
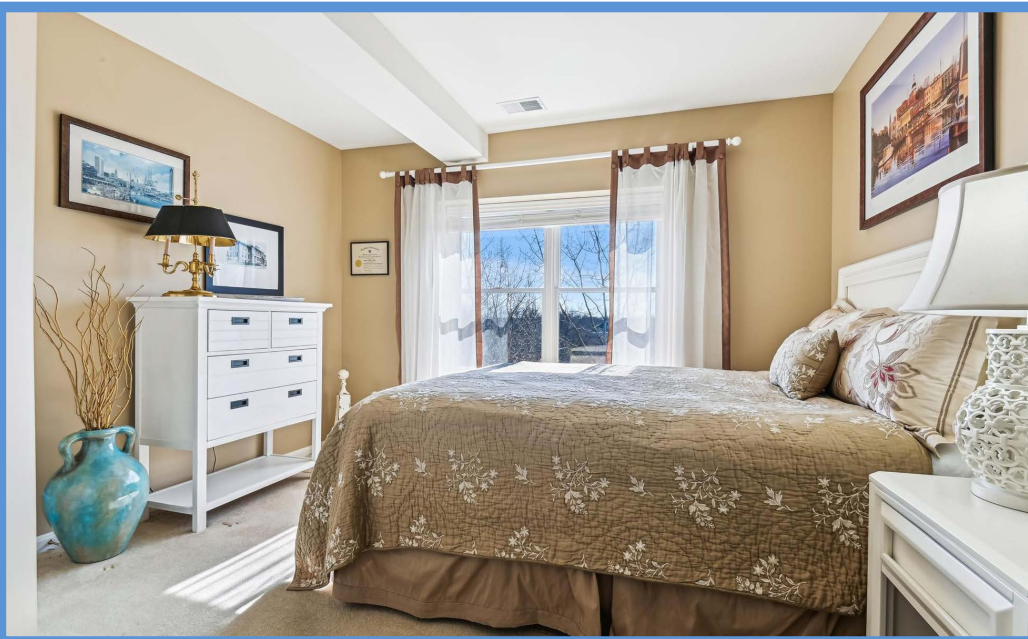
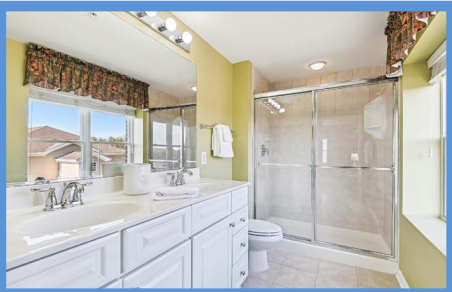


LYNN PLACK

Realtor®
lynnplack@HubbleBisbee.com
410-340-2939 (Mobile)
410-321-1411 (Office)

WWW.HUBBLEBISBEE.COM | (410) 321-1411 (OFFICE) | 





FOYER

- Paneled entry door
- Hardwood flooring
- Crown molding
- Closet
- Recessed light
- Flows to Living Room

LIVING ROOM

- Hardwood flooring
- Gas fireplace with Colonial mantel, granite surround and hearth
- Picture window with Hunter Douglas plantation blinds and custom drapery treatment
- Crown molding
- Marble and stone wall art and marble display shelf unit can convey
- Flows to Bedroom Hall
- Hall to Family Room with closet
- French doors to Dining Room

DINING ROOM

- Hardwood flooring
- Coffered ceiling trimmed with crown molding
- Bronze 9-light chandelier with shades
- Recessed lighting

FAMILY ROOM

- Hardwood flooring
- Triple window and additional window with Hunter Douglas plantation blinds and custom valences
- Recessed lighting
- Wall mounted shelf
- Open flow to Kitchen

KITCHEN

- Hardwood flooring
- Cherry raised-panel cabinetry to ceiling including island/breakfast bar, pantry cabinet, glass-door cabinet, pull-out trash/recycle bins and matching crown trim
- Granite counters
- Whirlpool stainless steel refrigerator with water/ice dispenser

- Whirlpool stainless steel 5-burner gas range
- Whirlpool stainless steel built-in microwave
- Whirlpool stainless dishwasher
- Blanco stainless steel undermount double sink with Insinkerator disposal
- Breakfast area with glazed door to Deck, pendant light and triple window with Hunter Douglas plantation blinds and custom valence
- Additional window at sink with Hunter Douglas plantation blinds and custom valence
- Recessed lighting
- Under-cabinet lighting
- Access to Laundry/Utility Room

LAUNDRY/UTILITY ROOM

- Vinyl flooring
- Carrier HVAC unit with gas heat
- Bradford White electric water heater
- Electric service panel
- Maytag washer and dryer
- Pantry cabinets and wall cabinets
- Ceiling lights

BEDROOM HALL

- Flows from Living Room
- Hardwood flooring
- Utility closet with Bryant HVAC unit with gas heat
- Crown molding
- Recessed lighting

PRIMARY BEDROOM

- Wall-to-wall carpeting
- Triple window and double window with Hunter Douglas plantation blinds and custom valences
- Large walk-in closet

PRIMARY BATH

- Ceramic tile floor and shower stall walls
- Double vanity with solid surface top and seamless sinks, plate glass mirror, overhead lighting and mirrored medicine cabinet
- Shower stall with recessed light and glass doors

- Window with Hunter Douglas plantation blind and valence
- Linen closet
- Exhaust fan

BEDROOM 2

- Wall-to-wall carpeting
- Double window with Hunter Douglas plantation blind and drapery treatment
- Bookcase with base cabinet
- Closet

HALL BATH

- Ceramic tile floor and tub surround
- Vanity with solid surface top and seamless sinks plate glass mirror, overhead lighting and mirrored medicine cabinet
- Tub/shower combination with recessed light
- Exhaust fan

DECK

- Glazed door access from Kitchen
- Concrete floor
- Metal railing with glass panels

PARKING

- One garage space
- Common parking lot with ample space for guests

STORAGE

- Storage bin on same floor as unit

ADDITIONAL AMENITIES

- Deluxe 1727 square foot condo located at the end of the hall with windows on 3 sides
- Well appointed main lobby with seating area
- Two elevators
- Community Room
- Bike storage racks in Garage
- Great location convenient to Greenspring Station, Towson, Hunt Valley and expressways with an easy commute to downtown Baltimore

