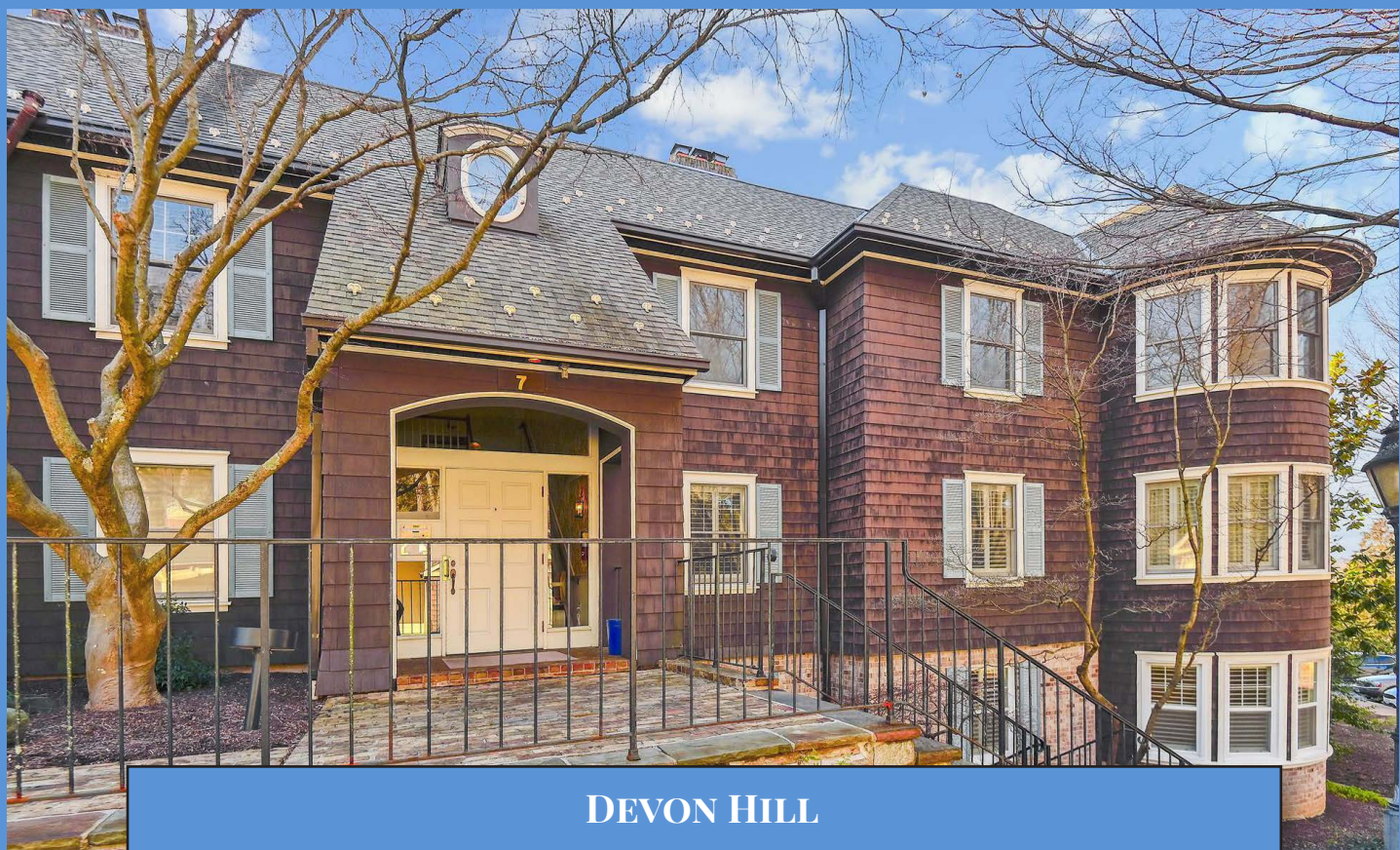
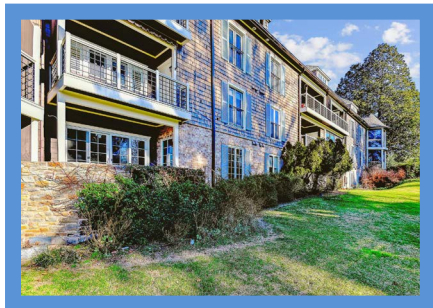


*Hubble
Bisbee*

CHRISTIE'S
INTERNATIONAL REAL ESTATE



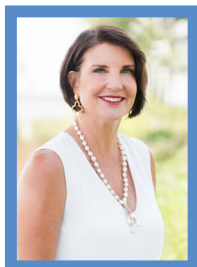
DEVON HILL
2024 DEVON HILL ROAD #A5



LOCATIONS

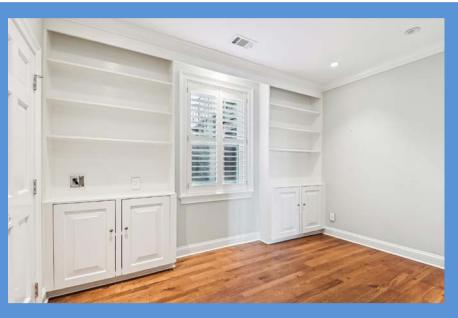
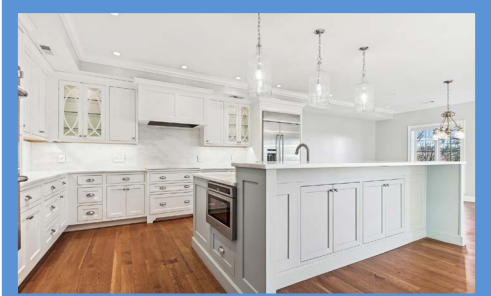
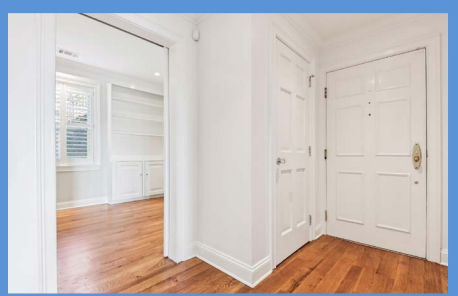
2330 W Joppa Road, Suite 104
Lutherville, MD 21093

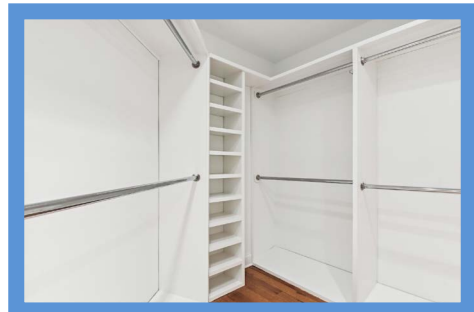
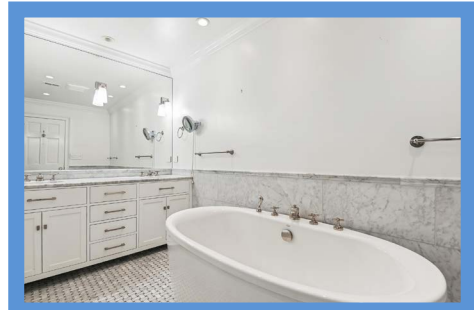
181 Harry S Truman Pkwy Ste 200
Annapolis, MD 21401



KELLY JOHNSTON

Realtor®
Kelly@HubbleBisbee.com
410-949-7546 (Mobile)
410-321-1411 (Office)





FOYER 16' X 6'

- Paneled entry door
- Hardwood flooring
- Crown molding
- Recessed lighting
- Wide cased portal to open concept Living Room, Dining Room and Kitchen

LIVING ROOM 17' X 15'

- Hardwood flooring
- Woodburning fireplace with traditional wood mantel, slate surround and hearth, glass doors
- Built-in bookcases with base cabinets, desk with mail cubbies, granite top, wall cabinets and Sony wall mounted TV with sound bar
- Sliding glass doors to Patio with full-size sidelights and electronic shades
- Crown molding
- Recessed lighting

DINING ROOM 16' X 13'

- Hardwood flooring
- Two windows with custom shades
- Brass 5-light chandelier with glass shades
- Recessed lighting

KITCHEN 16' X 12'

- Hardwood flooring
- Custom recess-panel wood cabinetry including large island/breakfast bar, illuminated glass-door cabinets with glass shelves, pot-pan drawers, roll-out trays, range hood enclosure, appliance garage, pull-out trash/recycle bins, dovetailed drawers and matching crown trim

- Marble counters and slab backsplashes
- KitchenAid stainless steel built-in refrigerator with water/ice dispenser
- Monogram induction cooktop-cookware included
- Monogram range hood with lighting
- Monogram stainless steel double wall oven
- Monogram stainless steel microwave drawer
- KitchenAid dishwasher with matching front panel
- Oversize stainless steel undermount sink with basin rack and Insinkerator disposer
- Recessed lighting
- Under-cabinet lighting
- Three glass globe pendant lights above island

PRIMARY BEDROOM 17' X 12'

- Private hall entry with access to Primary Bath, custom fitted walk-in closet and Utility closet with all electric Carrier HVAC unit
- Hardwood flooring
- Full width bowed bay window with plantation shutters
- Crown molding
- Recessed lighting
- Rough-in for wall mounted TV

PRIMARY BATH 10' X 7'

- Marble basket weave pattern floor including shower stall
- Double vanity with marble top, undermount sinks, plate glass mirror and wall sconce lighting
- Free-standing Kohler soaking tub with handheld shower
- Marble shower stall with built-in

- bench, additional handheld shower and glass door enclosure
- Water closet with Toto flush and built-in linen shelving
- Built-in illuminated glass shelving with marble base- at vanity
- Crown molding
- Recessed lighting
- Exhaust fans

BEDROOM 2 13' X 12'

- Hardwood flooring
- Window with plantation shutters
- Crown molding
- Double closet
- Recessed lighting
- Rough-in for wall mounted TV

DEN 13' X 10'

- Glazed pocket door entry
- Hardwood flooring
- Window with plantation shutters
- Built-in bookcases with base cabinets
- Crown molding
- Recessed lighting
- Laundry closet with Bosch washer and dryer
- Utility closet with AO Smith electric water heater

HALL BATH

- Marble chevron pattern floor
- Subway tile wainscot
- Pedestal sink with adjustable wall mounted mirror and wall sconce lighting with shades
- Shower stall with subway tile walls, marble floor, recessed light and glass door enclosure
- Exhaust fan

EXTERIOR

- Brick patio with stone steps to lawns and gardens, beautiful vistas and access from Living Room
- Covered parking for 1 car

