

*Hubble
Bisbee*

CHRISTIE'S
INTERNATIONAL REAL ESTATE



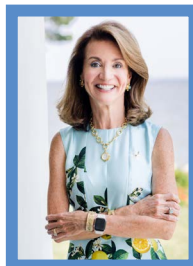
GREENSPRING VALLEY
224 HOPKINS LANE



LOCATIONS

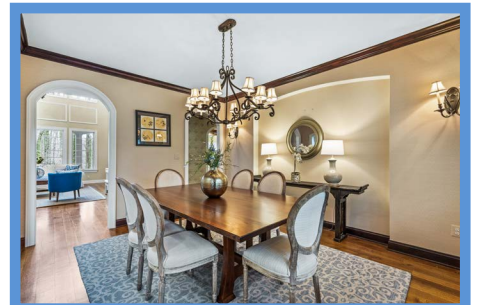
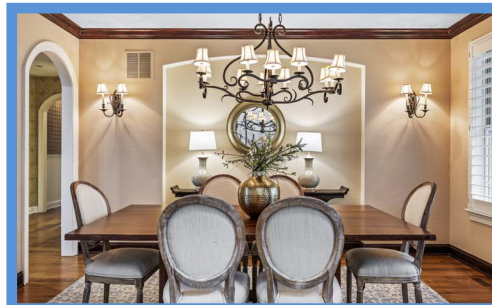
2330 W Joppa Road, Suite 104
Lutherville, MD 21093

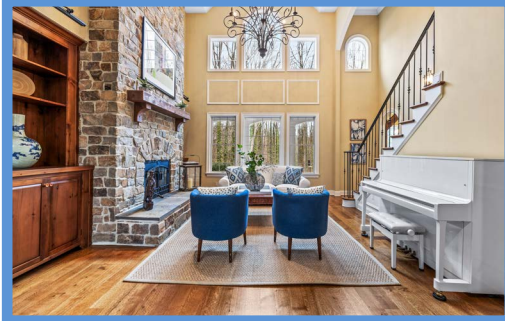
181 Harry S Truman Pkwy Ste 200
Annapolis, MD 21401

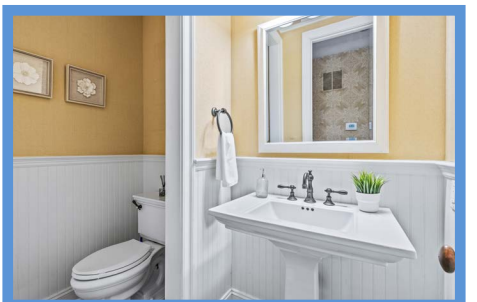


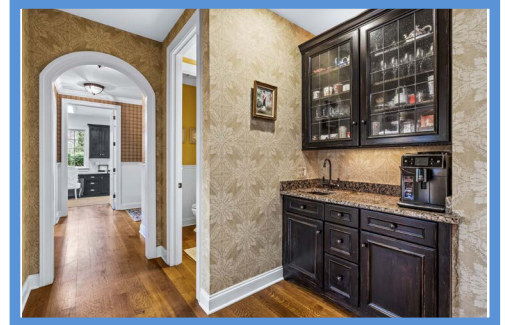
KAREN HUBBLE BISBEE

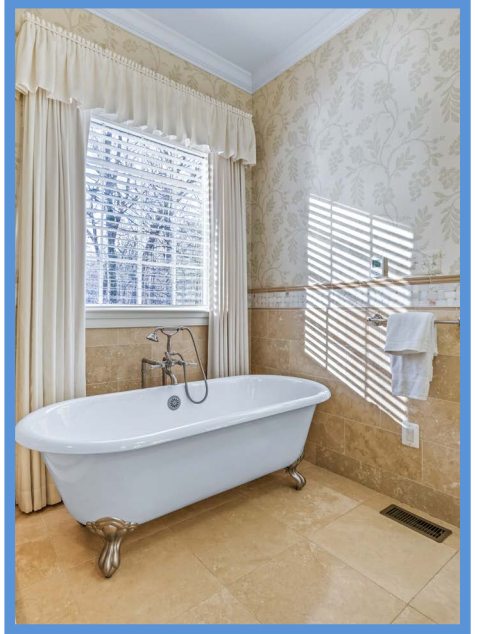
Principal, Associate Broker, ABR, GRI
Karen@HubbleBisbee.com
443-838-0438 (Mobile)
410-321-1411 (Office)

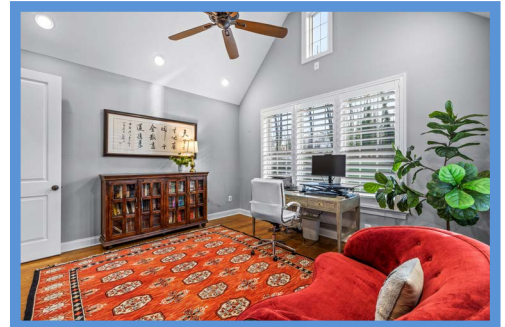
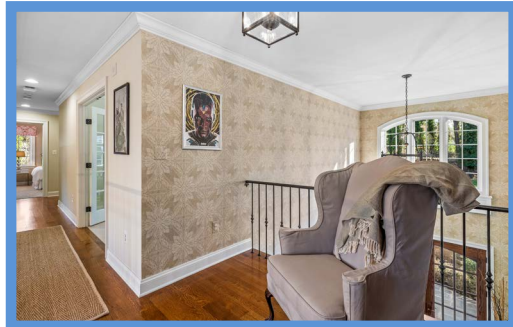
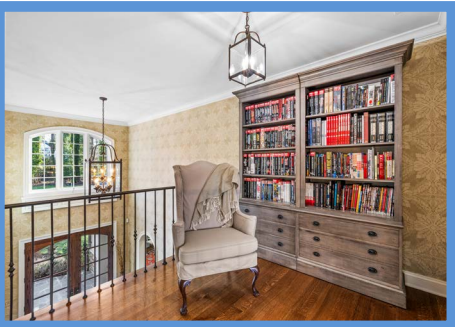












FOYER 15'0" X 9'0"

- Oak glazed double entry doors
- Two story
- Wide plank quarter-sawn oak flooring
- Arched triple window above entry on raised-panel base
- Crown molding
- Large bronze hanging lantern
- Built-in ceiling speakers
- Cased archway to vestibule at Study with crown molding and chair rail with wainscot moldings
- Open flow to Dining Room through wide cased archway
- Flows to Great Room

GREAT ROOM 24'0" X 17'0"

- Two-story with vaulted ceiling
- Wide plank quarter-sawn oak flooring
- Full height stone chimney with wood burning fireplace on raised bluestone hearth, custom glass door enclosure and bracketed wood mantel shelf
- Two-story Palladian window wall
- Custom built-in pine bookcases flanking chimney with base cabinets, wood bin and picture lighting fixtures
- Wide full-height archway at open oak staircase with wrought-iron railings, carpet runner and 3 bronze wall sconce lights
- Chair rail with wainscot moldings on staircase wall and up staircase
- Upper tier arched window at staircase
- Large 17-light bronze chandelier
- Recessed lighting
- Flows to Hall with open carpeted staircase to Lower Level
- Cased archway to Kitchen
- Cased archway to vestibule at Primary Bedroom with crown molding, chair rail with wainscot moldings and closet
- Two cased archways to Dining Room

DINING ROOM 15'0" X 12'2"

- Wide plank quarter-sawn oak flooring
- Triple window with plantation shutters
- Crown molding
- Breakfront/sideboard arched alcove
- Bronze 12-light chandelier
- Two bronze double wall sconce lights with shades

STUDY 14'0" X 13'6"

- Vestibule entry from Foyer
- Vaulted ceiling with upper tier arched window
- Wide plank quarter-sawn oak flooring
- Triple window and double window with plantation shutters
- Alcove with custom built-in bookcase with base cabinet and TV niche
- Recessed lighting
- Hard-wired for high speed internet
- Ceiling fan

FAMILY ROOM 17'1" X 13'8"

- Vaulted ceiling
- Wide plank quarter-sawn oak flooring
- Stone chimney with gas fireplace on raised bluestone hearth, custom glass door enclosure and bracketed wood mantel shelf
- Double window and 2 additional windows
- Recessed lighting
- Built-in ceiling speakers
- Samsung wall mounted TV
- Hard-wired for high speed internet
- Ceiling fan
- Open flow to Kitchen through posts and beams

KITCHEN 25'6" X 17'6" (IRREGULAR)

- Wide plank quarter-sawn oak flooring
- Beamed/coffered ceiling
- Bertch custom recess-paneled wood cabinetry in antique white finish including 'L' shaped island/breakfast bar, glass door cabinets, pot-pan drawers, roll-out trays, 2 base cabinet pull-out spice racks flanking range, range hood enclosure, pull-out trash/recycle bins, pilaster trim, beadboard accents, dovetailed drawers, soft close drawers/cabinets and matching built-up crown
- Granite counters
- Subway tile backsplashes with decorative panel at range
- Sub-Zero built-in refrigerator with matching front panels
- U-Line under counter wine cooler
- Dacor stainless steel commercial grade 6-burner gas cooktop
- Best range hood vent with lighting
- KitchenAid stainless steel wall oven
- KitchenAid stainless steel built-in microwave
- KitchenAid dishwasher with matching front panel
- Farmers sink with disposal, filtered hot/cold water dispenser, spray and soap dispenser
- Breakfast area in bay window with glazed door to covered Patio Porch and bronze 6-light chandelier
- Additional glazed exit door
- Walk-in pantry closet
- Recessed lighting
- Two bronze pendant lights with bubble-glass globes above island
- Under-cabinet lighting
- Above-cabinet ambient lighting
- Built-in ceiling speakers
- Cased archways to Hall and Back Hall

HALL

- Wide plank quarter-sawn oak flooring
- Open flow from Great Room
- Wet bar with base cabinets, leaded glass door cabinets, granite top, copper undermount sink, under-cabinet lighting and above-cabinet ambient lighting
- Powder Room with wide plank quarter-

- sawn oak flooring, beadboard wainscot, Kohler pedestal sink, framed mirror with overhead lighting, matching Kohler flush, crown molding and ceiling light/ Exhaust fan
- Cased archway to Back Hall

BACK HALL

- Wide plank quarter-sawn oak flooring
- Beadboard wainscot
- Crown molding
- Closet
- Three ceiling lights
- Cased archway to Kitchen
- Access to Garage and Laundry/ Mudroom

LAUNDRY/MUDROOM 18'2" X 10'0"

- Wide plank quarter-sawn oak flooring
- Built-in 3-locker mudroom cabinetry with seating benches, upper shelves and beadboard back wall with coat hooks
- Built-in black finish desk with base cabinets and file drawers
- White base and wall cabinets in laundry area with soapstone counter and Elkay stainless steel undermount sink
- LG washer and Samsung dryer
- Three windows
- Glazed exit door to covered Side Porch
- Closet
- Fluorescent lighting

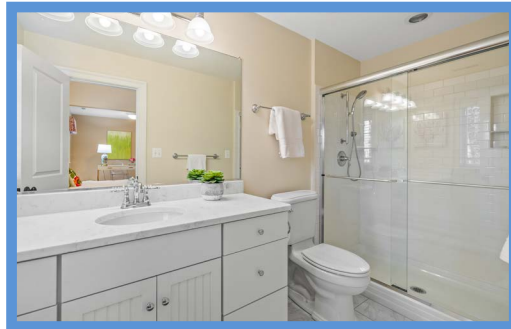
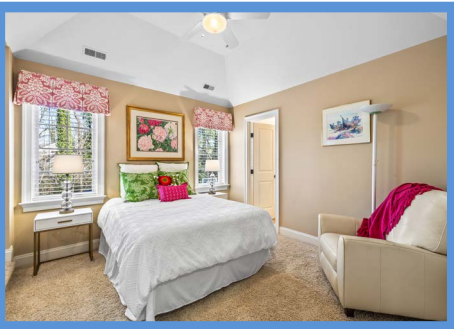
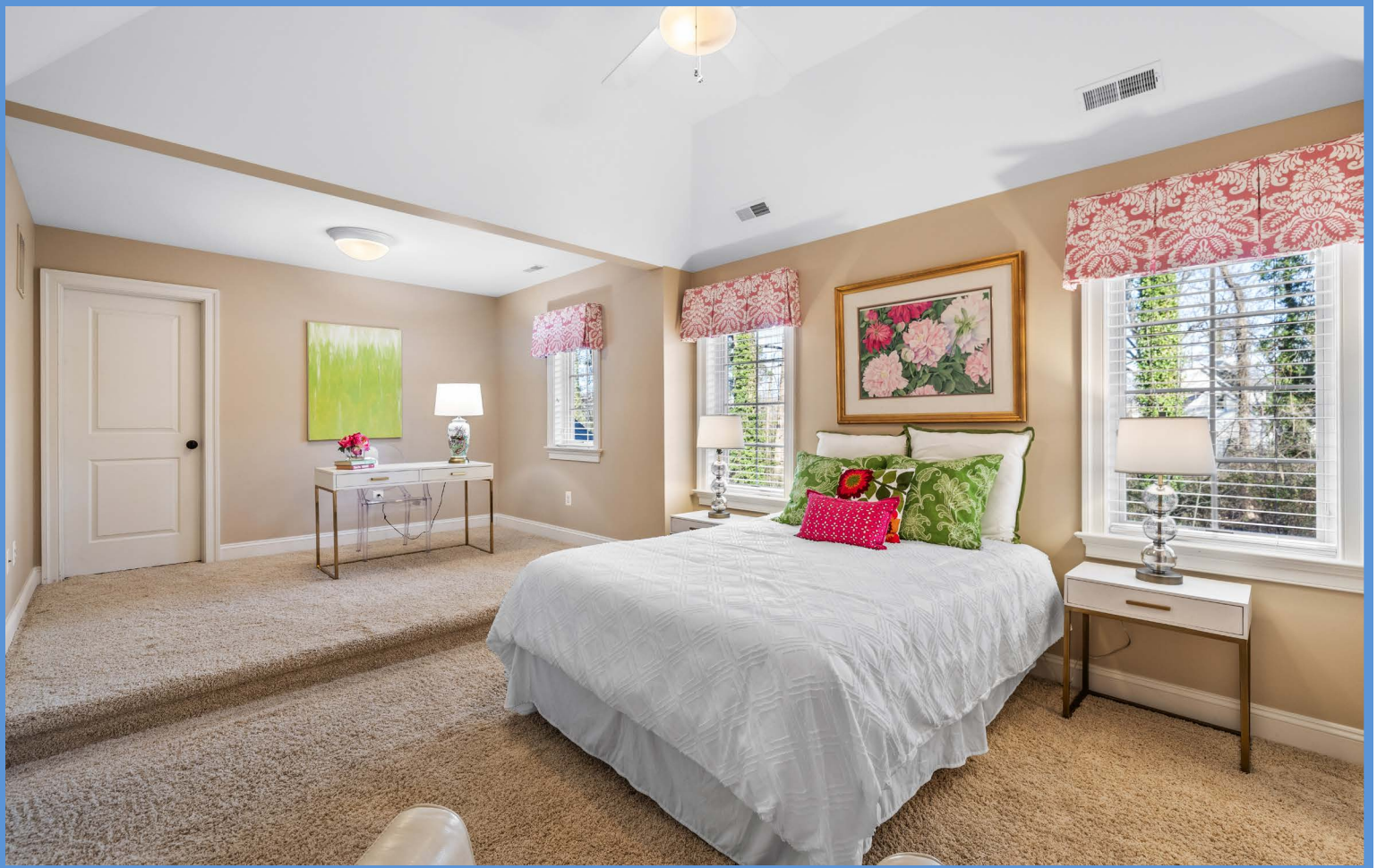
GARAGE

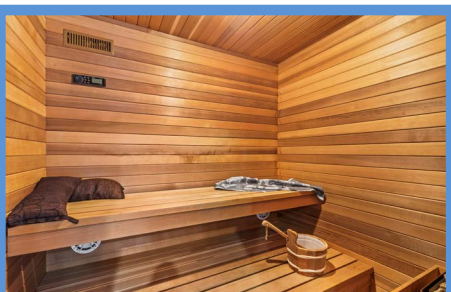
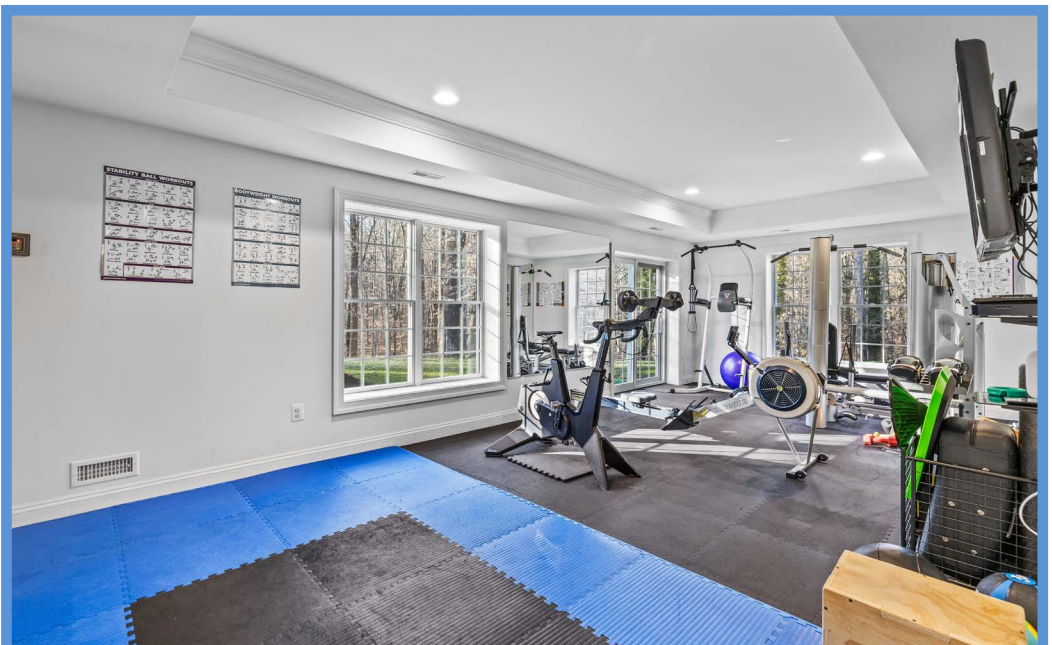
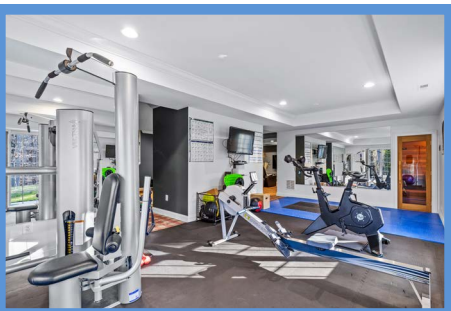
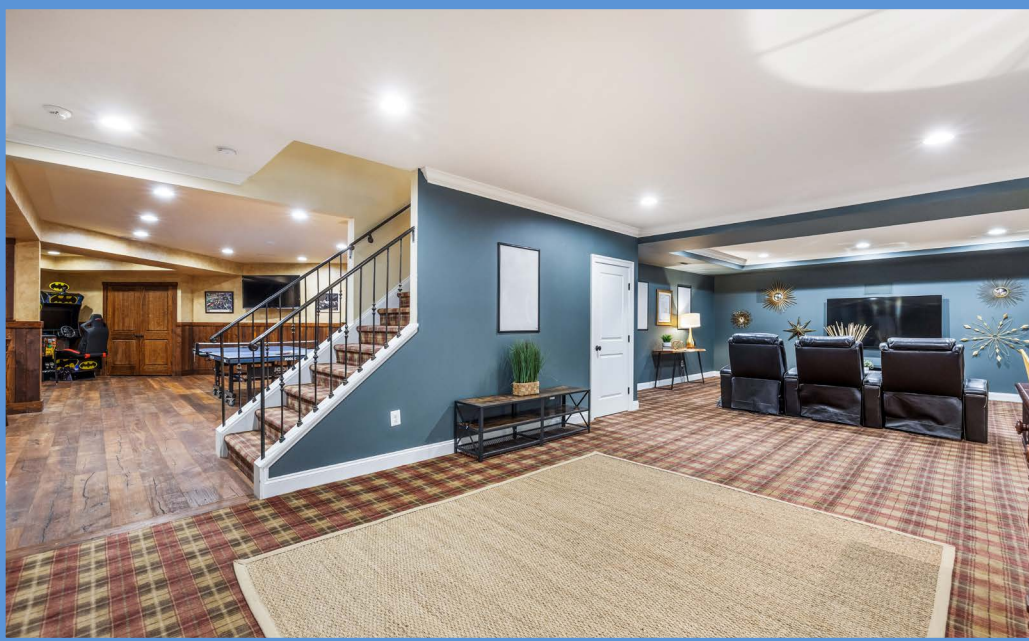
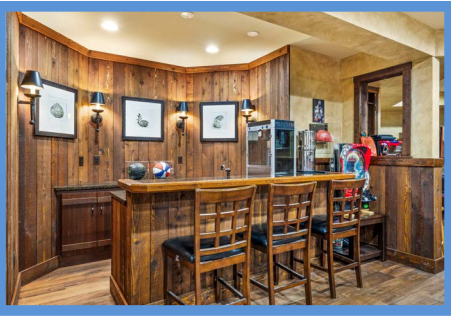
- Oversized finished 3-car
- 'Carriage House' doors
- Automatic door openers
- Charging station
- Two windows with plantation shutters
- Wall mounted garden tool racks
- Kenmore refrigerator
- Fluorescent lighting

PRIMARY BEDROOM

28'0" X 14'0"

- Vestibule entry from Great Room
- Wide plank quarter-sawn oak flooring
- Tray ceiling with cove lighting
- Wide bowed bay window with pleated black-out shades and custom drapery treatment
- Three additional windows with plantation blinds and custom drapery treatments
- Glazed door to covered Patio Porch
- Patinated metal 3-light chandelier with shades
- Ceiling fan with light
- Panasonic wall mounted TV





PRIMARY BATH 14'6" X 13'0"

- Travertine marble floor, shower stall and wainscot with mosaic borders and cap molding
- Radiant heated floor
- Wraparound double vanity with marble top, Kohler undermount sinks, 3 framed mirrors and 4 double wall sconce lights with shades
- Claw-foot soaking tub with handheld shower
- Large glass enclosed shower stall with 2 shower heads, 4 body sprays, built-in bench, 2 shelves, recessed lighting and exhaust fan
- Water closet with window
- Large custom fitted walk-in closet with wide plank quarter-sawn oak flooring
- Window with plantation blind and drapery treatment
- Crown molding
- Linen closet
- Three-light chandelier with shades
- Exhaust fans

SECOND FLOOR

HALL

- Wide plank quarter-sawn oak flooring
- Landing for staircase with wrought iron railing overlook to Great Room
- Seating area with wrought iron railing overlook to Foyer and bronze pendant light
- Crown molding
- Recessed lighting
- Flows to Laundry area with window, Electrolux washer and dryer, walk-in linen closet and utility closet with Carrier HVAC unit and Aprilaire humidifier

BEDROOM #2 18'4" X 11'2"

- Entry through French doors
- Vaulted ceiling
- Wall-to-wall carpeting
- Triple window with plantation blind and custom drapery treatment
- Recessed lighting
- Built-in ceiling speakers
- Hard-wired for high speed internet
- Ceiling fan
- Access to Hall Bath

BEDROOM #3 20'1" X 12'0"

- Tray ceiling
- Wall-to-wall carpeting
- Step-up to seating area
- Three windows with plantation blinds and custom valences
- Walk-in closet
- Ceiling light
- Ceiling fan with light
- Private Bath

BATH

- Marble finish ceramic tile floor
- Wide vanity with marble top,

- undermount sink, plate glass mirror and overhead lighting
- Full width shower stall with subway tile walls, wall niche, recessed light and glass doors
- Window with plantation blind
- Ceiling light/exhaust fan

BEDROOM #4 25'5" X 14'9"

- Vestibule entry
- Tray ceiling
- Wall-to-wall carpeting
- Built-in desk with base cabinets and bookcases
- Three windows with plantation blinds
- Two walk-in closets
- Ceiling light
- Ceiling fan with light

HALL BATH

- Divided
- Dual access
- Marble finish ceramic tile floor
- Vanity with marble top, plate glass mirrors, mirror-door medicine cabinet and overhead lighting
- Tub/shower combination with subway tile surround, wall niche, recessed light and glass doors
- Ceiling light/exhaust fan

LOWER LEVEL

RECREATION ROOM 37'8" X 20'2"

- Wall-to-wall carpeting
- Crown molding
- Recessed lighting
- Built-in surround sound
- Hard-wired for high speed internet
- Access to Bath
- Access to Utility Room
- Dual access to Exercise Room
- Flows to game Room at staircase
- Wall mount TV excluded

GAME ROOM 31'2" X 24'6"

- Wide plank engineered wood flooring
- Rustic wood paneled wainscot
- Matching rustic wood paneled alcove with wet bar including base cabinets, granite tops, prep sink, GE Monogram stainless steel under-counter refrigerator with icemaker and 4 wall sconce lights with shades
- Wall mounted billiards cue rack
- Recessed lighting
- Bronze 10-light billiards lamp with shades- in storage room
- Built-in ceiling speakers
- Utility closet with electric service panels, standby generator switch and panel, home media panels
- Access to tremendous storage room with wooden storage shelving and water treatment system for Kitchen

EXERCISE ROOM 26'4" X 12'8"

- Low-impact rubber flooring
- Two double windows
- Sliding doors to Yard
- SaunaCore cedar sauna with glass door, 2-tier bench and Wi-Fi radio
- Plate glass mirror wall panels
- Crown molding
- Toshiba wall mount TV
- Recessed lighting

BATH

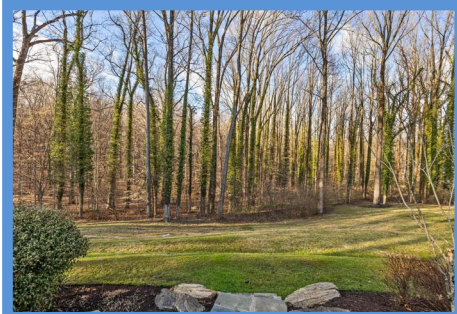
- Basketweave marble floor
- Beadboard wainscot
- Vanity w/marble top, Kohler undermount sink, framed mirror & overhead lighting
- Full width shower stall w/subway tile walls, recessed light & glass doors
- Ceiling light/exhaust fan

UTILITY ROOM

- Unfinished
- Water Furnace Envision geothermal HVAC system
- Aprilaire humidifier & aircleaner
- Two Navien gas-fired tankless water heaters
- Well water conditioning system
- Well water radon system
- Sump pump
- Wooden storage shelving

EXTERIOR

- Stone and Hardiplank shingle traditional home built by J. Paul Builders
- Architectural asphalt shingle roof
- Copper gutters and downspouts
- Bluestone walkway to covered bluestone Porch at main entry
- Main entry Porch with traditional wood columns, beadboard ceiling and recessed lighting
- Covered bluestone Side Porch with traditional wood columns and access to Laundry/Mudroom
- Expansive bluestone Patio, completely renovated, with stone cooking center with Weber stainless steel gas grill
- Covered bluestone Patio Porch with traditional wood columns, beadboard ceiling, recessed lighting and outdoor speakers
- Stone garden walls and bluestone garden steps
- Generac propane standby generator
- In-ground 1,000 gallon propane tank
- Large parking pad w/basketball hoop
- Guest parking pad at front entry with cobblestone borders
- Woodshed
- Extensive professional landscaping and custom exterior lighting
- Total 2.12 partially wooded acres nestled in golf course community



*Hubble
Bisbee*

CHRISTIE'S
INTERNATIONAL REAL ESTATE

GREEN SPRING
STATION
410-321-1411

ANNAPOLIS
410-321-1833

