

*Hubble  
Bisbee*

**CHRISTIE'S**  
INTERNATIONAL REAL ESTATE



HISTORIC LUTHERVILLE  
1424 FRANCKE AVENUE



### LOCATIONS

2330 W Joppa Road, Suite 104  
Lutherville, MD 21093

181 Harry S Truman Pkwy Ste 200  
Annapolis, MD 21401

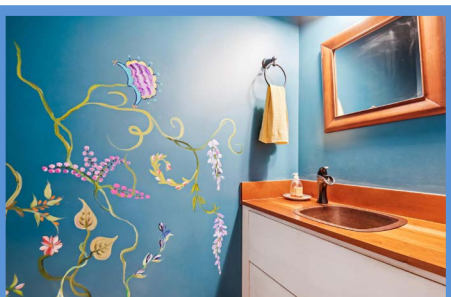
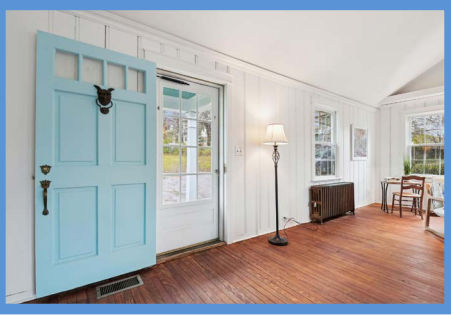


### LYNN PLACK

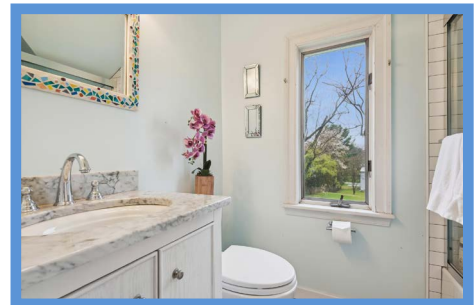
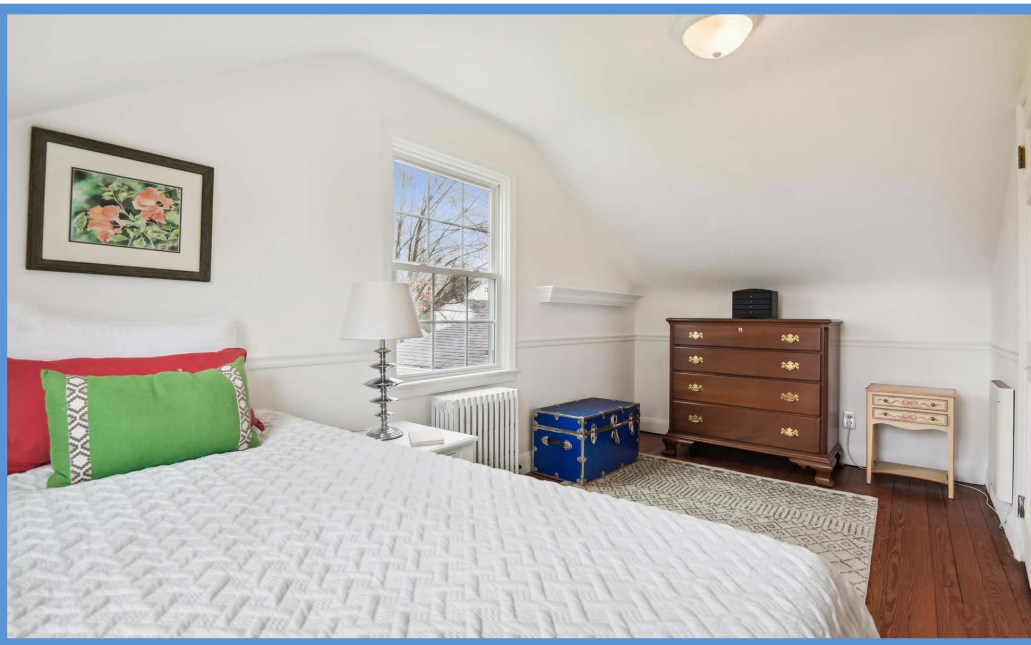
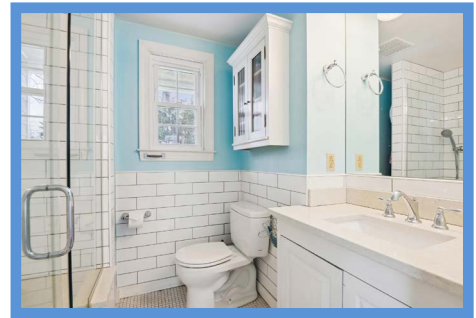
Realtor®  
LynnPlack@HubbleBisbee.com  
410-340-2939 (Mobile)  
410-321-1411 (Office)

WWW.HUBBLEBISBEE.COM | (410) 321-1411 (OFFICE) | 











## GREAT ROOM

- Paneled main entry door with 4-pane window at top
- Vaulted ceiling with exposed beams
- Pine flooring- refinished 2024
- Beaded wood paneled walls
- Stone woodburning fireplace with wood mantel shelf and ceramic tile hearth (as-is)
- Atrium door to Deck
- Five windows
- Walk-in closet
- Recessed lighting
- French doors to Kitchen

## KITCHEN

- Total renovation 2016
- Cherry hardwood flooring
- Maple Shaker style wood cabinets including island/breakfast bar, roll-out trays, pot-pan drawers and dovetailed drawers
- Granite countertops
- Subway tile backsplash
- GE stainless steel refrigerator with water/ice dispenser
- GE Profile stainless steel electric range
- GE stainless steel built-in microwave- 2023
- KitchenAid stainless steel dishwasher
- Oversize stainless steel undermount sink with Insinkerator disposer
- Glazed door to covered porch
- Walk-in pantry closet with octagon window
- Recessed lighting
- Under-cabinet lighting
- Passage to Hall with access to Laundry Room and Powder Room
- Open flow to Family Room

## FAMILY ROOM

- Cherry hardwood flooring
- Double window and 6 additional windows on 3 walls
- Sliding glass doors to yard
- Recessed lighting
- Built-in bookcase

## POWDER ROOM

- Renovated 2018
- Cherry flooring

- Vanity with cherry top, copper sink and overhead lighting
- Exhaust fan

## LAUNDRY ROOM

- Vinyl flooring
- Kenmore washer and Maytag dryer
- Wall cabinets
- Utility sink
- Electric service panel

## HALL

- Step-down from Kitchen
- Pine flooring
- Open staircase to Upper Level
- Wall niche
- Recessed light
- Access to Office and Primary Bedroom

## OFFICE

- Pocket door entry
- Carpet tile flooring
- Two windows
- Wall mount shelving
- Open shelving
- Closet
- Recessed lighting

## PRIMARY BEDROOM

- Step-down from Hall
- Pine flooring
- Double window and 2 additional windows
- Double closet
- Under-stair storage closet

## PRIMARY BATH

- Renovated 2018
- Ceramic tile floor
- Subway tile wainscot and shower stall walls
- Vanity with quartz top, undermount sink, plate glass mirror and overhead lighting
- Shower stall with built-in bench, wall niches and glass door enclosure
- Toto flush
- Wall cabinet
- Linen shelving
- Window
- Exhaust fan

## UPPER LEVEL

### HALL

- Landing for staircase
- Pine flooring
- Brass/beveled glass ceiling light

### BEDROOM 2

- Pine flooring
- Three windows
- Closet
- Ceiling light

### BEDROOM 3

- Pine flooring
- Two windows
- Chair rail
- Closet
- Wall mount shelving
- Ceiling light

### HALL BATH

- Renovated 2018
- Basket weave pattern ceramic tile floor
- Vanity with quartz top, undermount sink, framed mirror and overhead lighting
- Tub/shower combination with subway tile surround and glass doors
- Toto flush
- Window
- Exhaust fan

### CRAWL SPACE

- Outdoor access
- Oil-fired boiler for radiator steam heat
- Fuel oil storage tank
- HVAC heat pump unit
- Electric water heater

## EXTERIOR

- Hardiplank siding- 2017
- Replaced windows- 2017
- Asphalt shingle roof
- Engineered wood deck and steps from house and to yard with vinyl railings
- Fenced back yard
- Large parking pad

