

*Hubble  
Bisbee*

CHRISTIE'S  
INTERNATIONAL REAL ESTATE



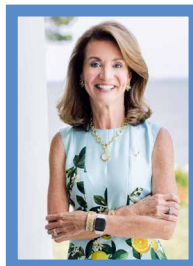
TIMOTHYS MANOR | PARKTON  
19118 TIMOTHYS MANOR COURT



LOCATIONS

2330 W Joppa Road, Suite 104  
Lutherville, MD 21093

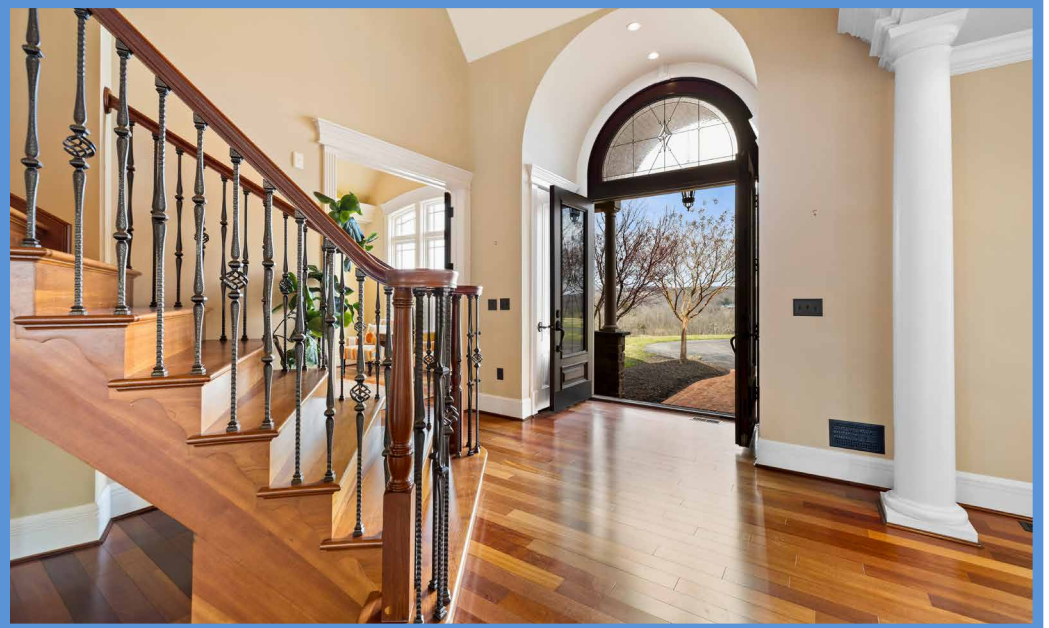
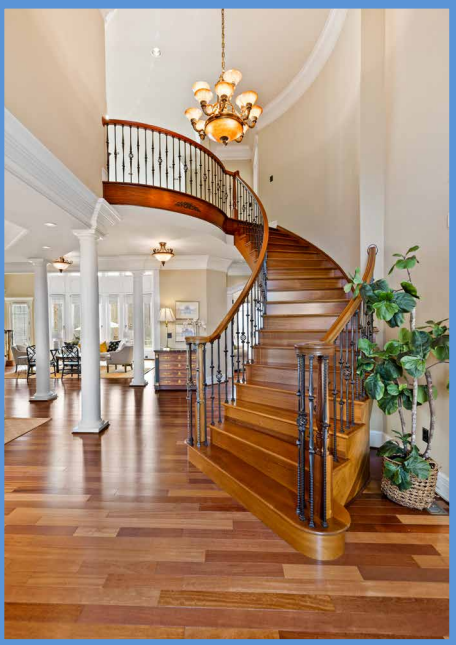
181 Harry S Truman Pkwy Ste 200  
Annapolis, MD 21401

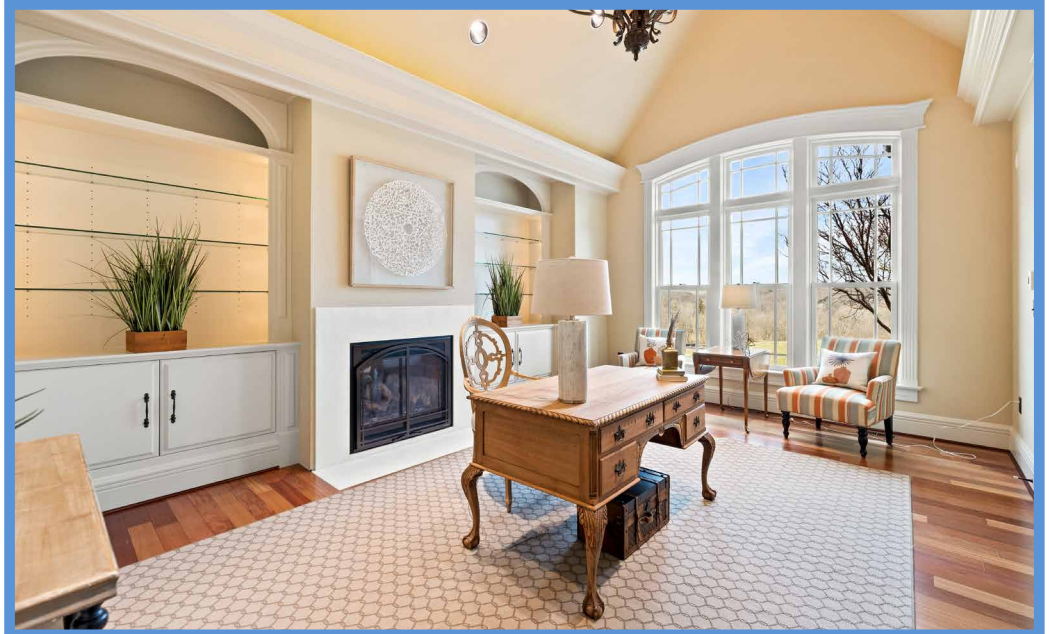
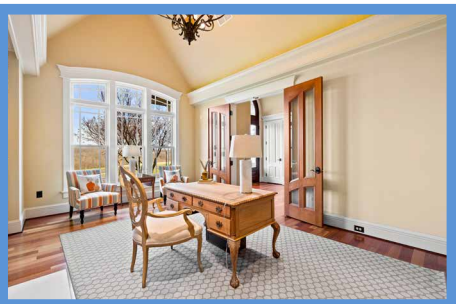
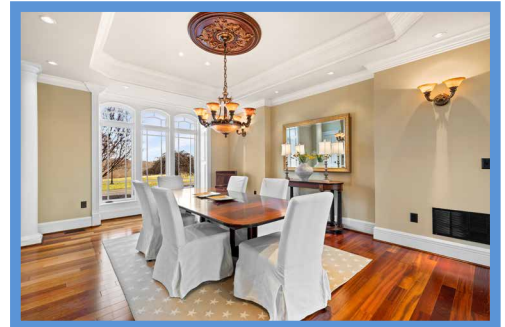
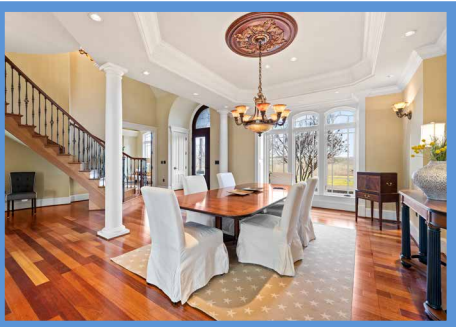
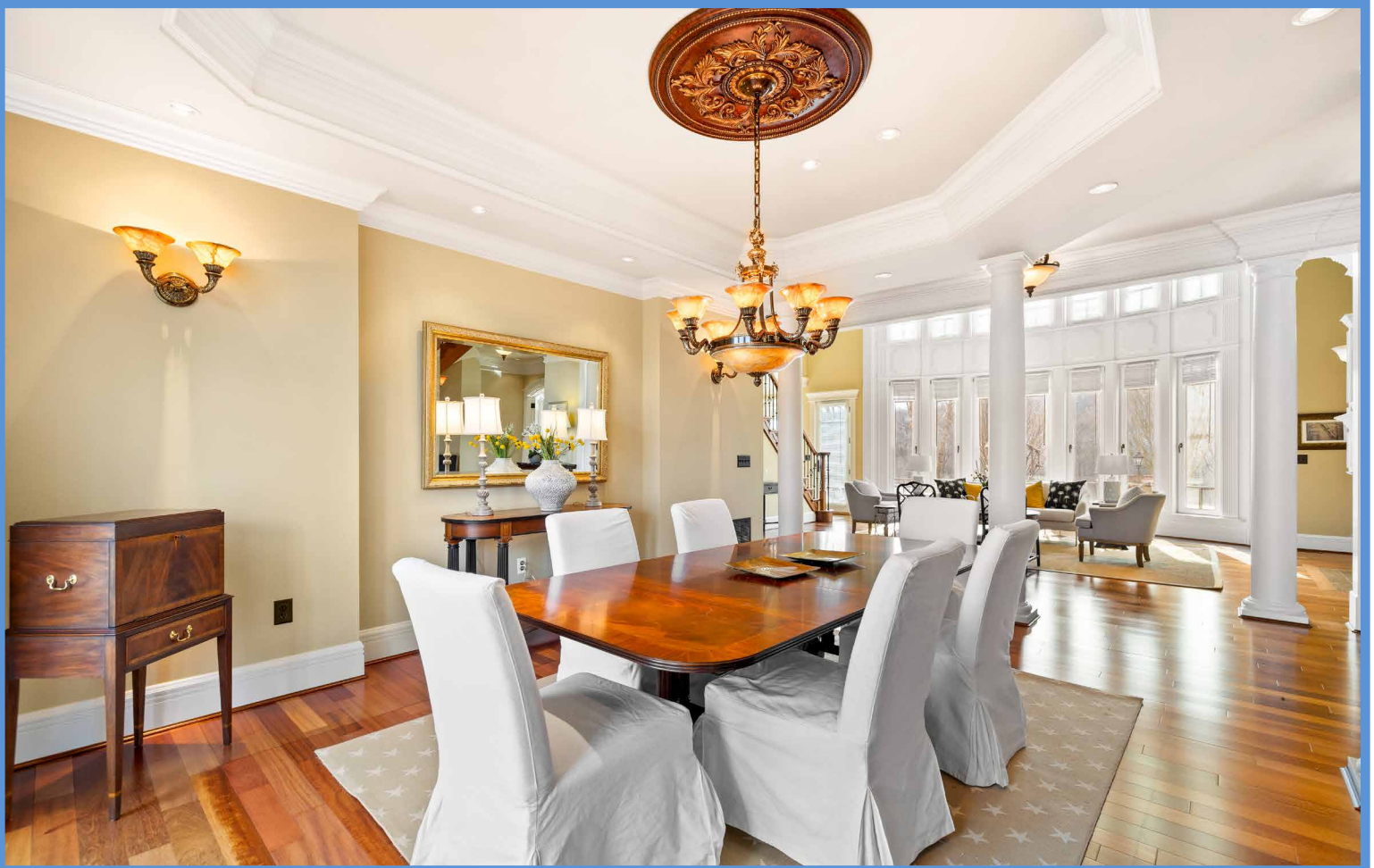


KAREN HUBBLE BISBEE

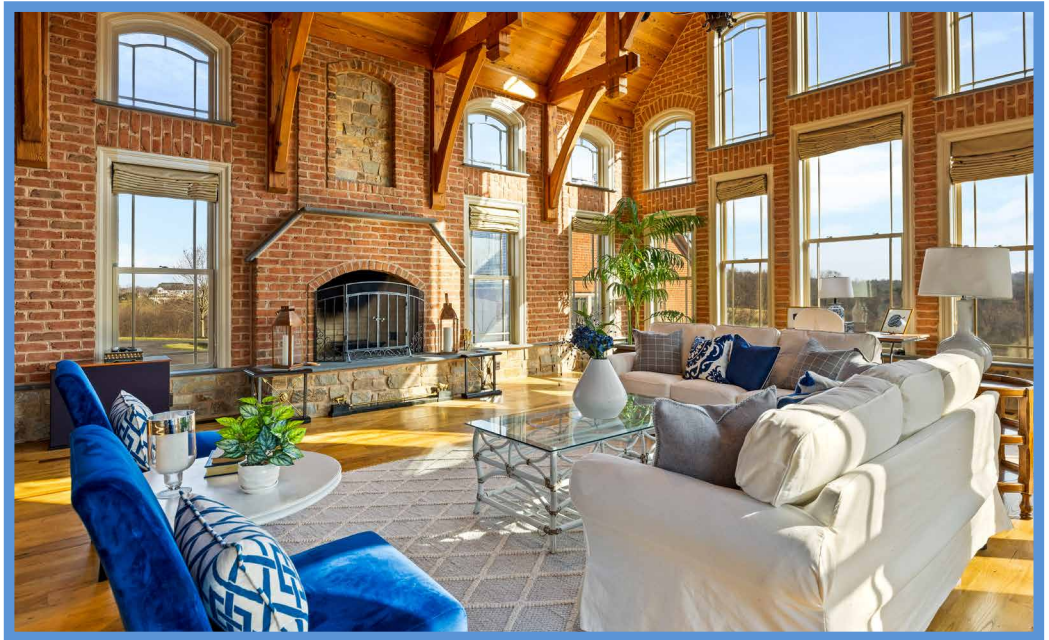
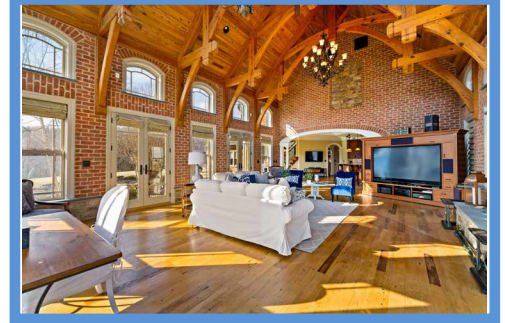
Principal, Associate Broker, ABR, GRI  
Karen@HubbleBisbee.com  
443-838-0438 (Mobile)  
410-321-1411 (Office)

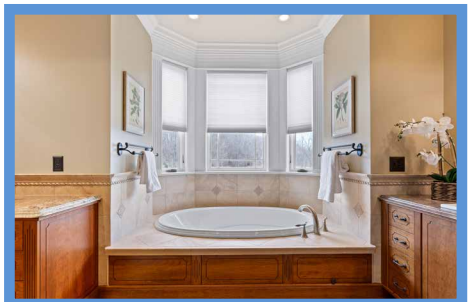
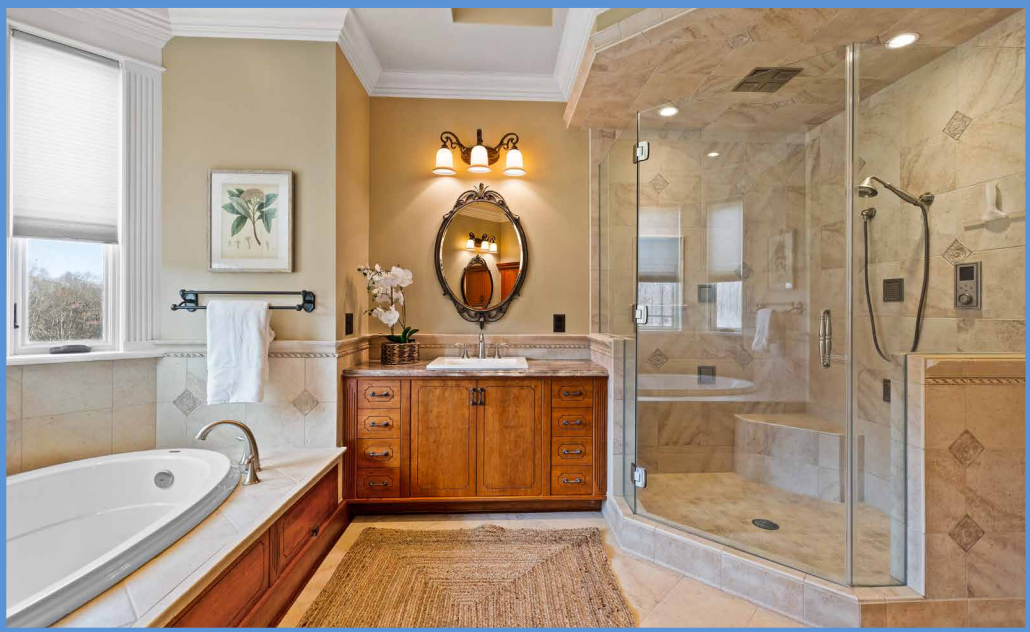
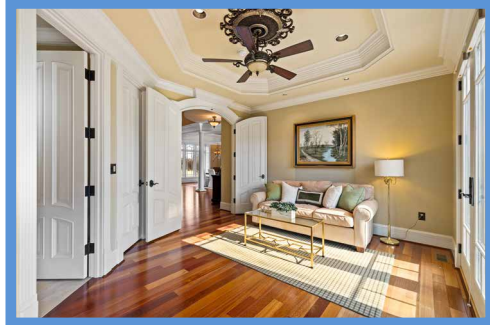
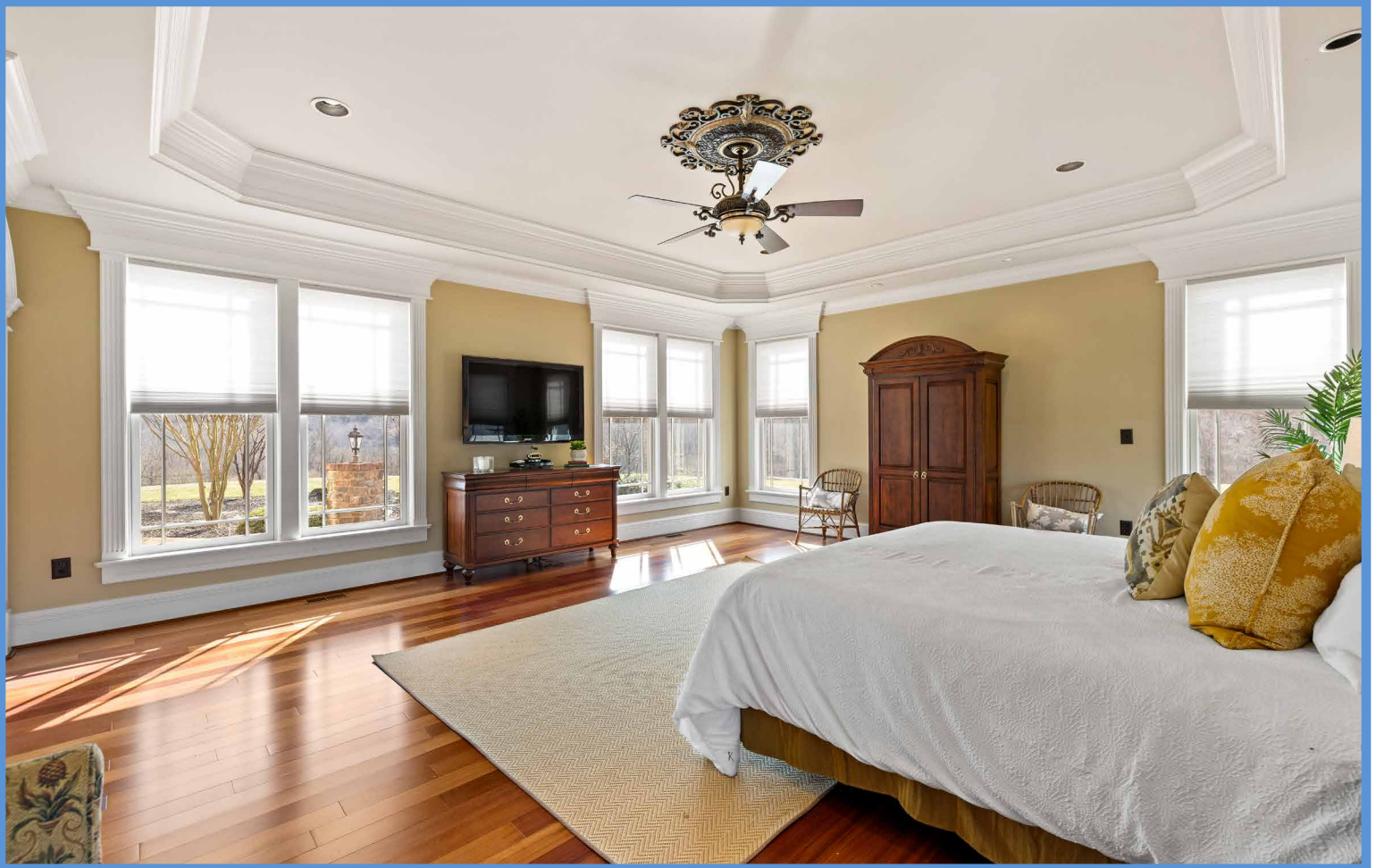
WWW.HUBBLEBISBEE.COM | (410) 321-1411 (OFFICE) | 

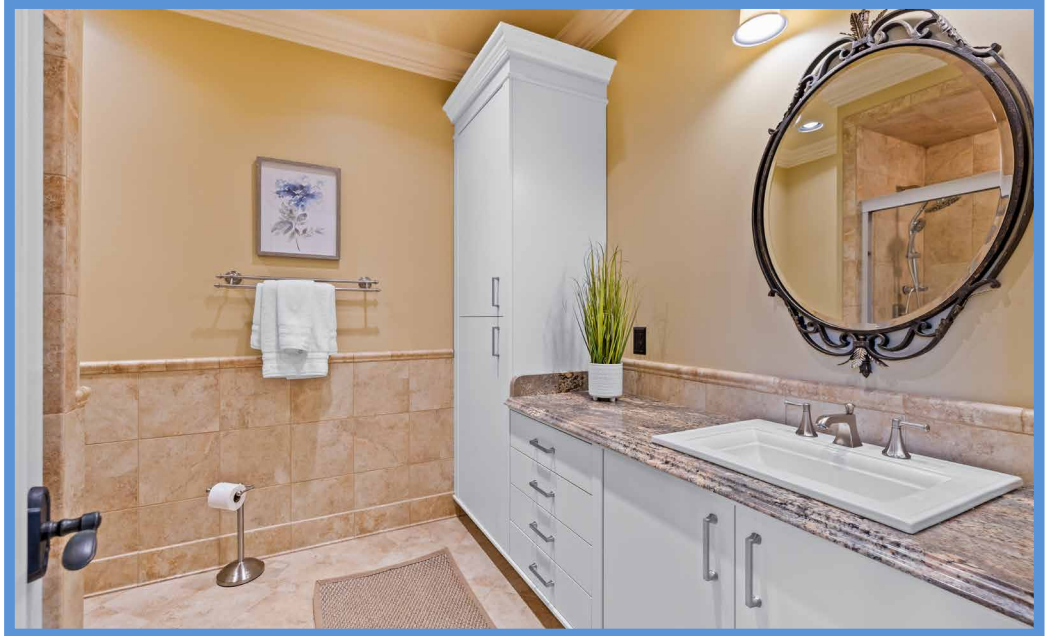
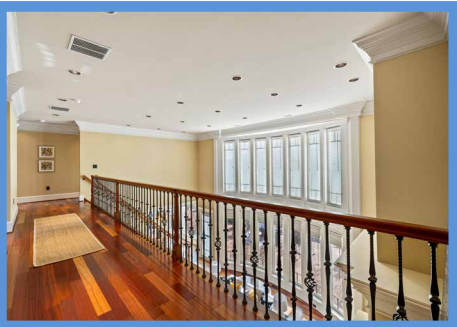
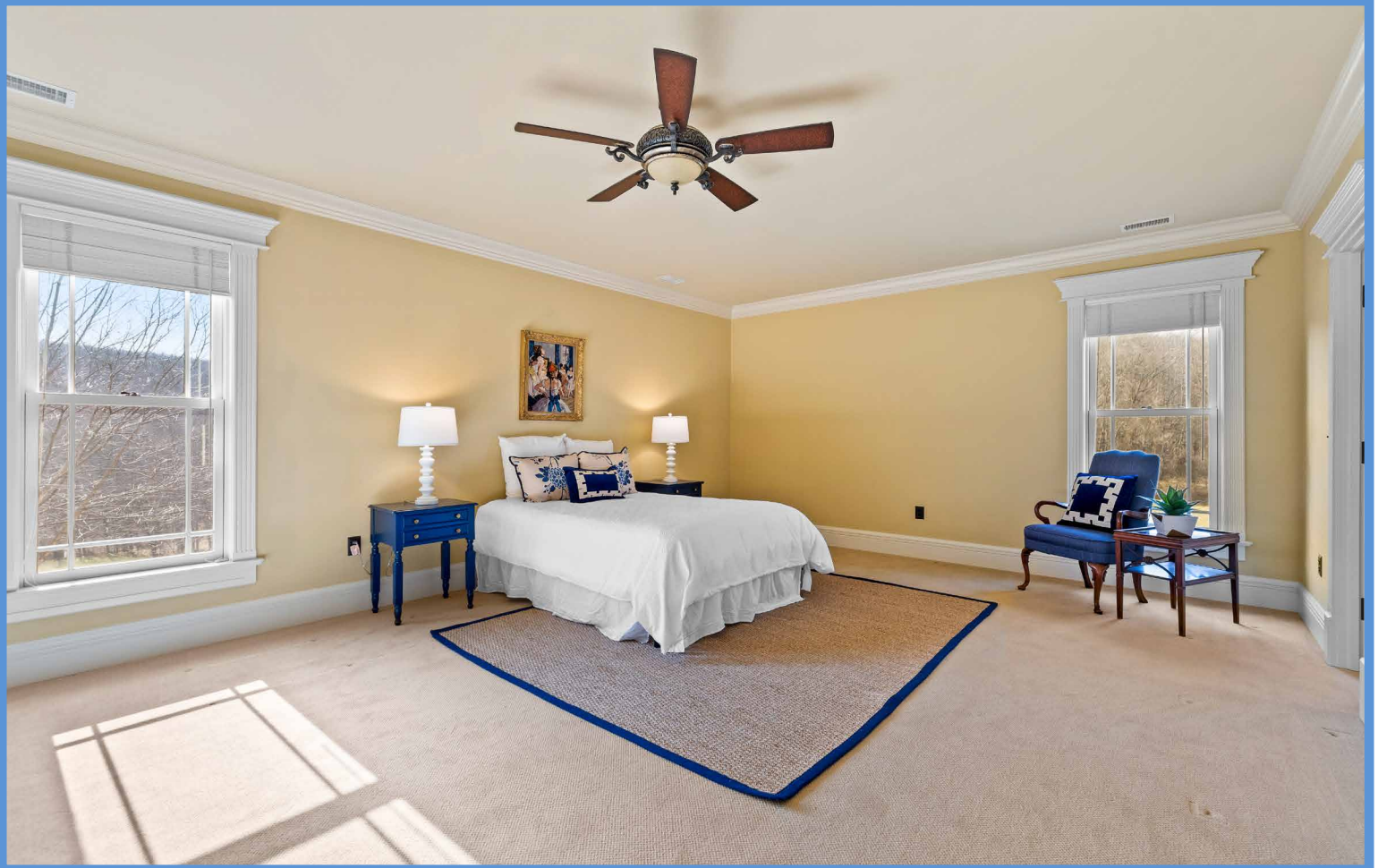












## FOYER 29'7" X 11'10"

- Solid Mahogany 2-1/4" thick double entry doors with leaded glass panels and arched transom set in archway
- Two-story
- Brazilian cherry Hardwood flooring
- Curved Brazilian cherry hardwood staircase with hardwood handrails and wrought iron birdcage spindles
- Five-step built-up crown molding
- Bronze chandelier with translucent glass shades
- Recessed lighting
- Two closets
- Flows to Gallery Hall
- Access to Primary Suite
- Open flow through classic columns to Dining Room
- Cherry hardwood double doors with glass panels to Library

## LIBRARY 18'3" X 14'10"

- Vaulted ceiling
- Brazilian cherry hardwood flooring
- Gas fireplace with marble surround
- Custom built-in bookcases with glass shelving and base cabinets flanking fireplace
- Triple arched window with transoms
- Built-up crown/cove molding at ceiling line with ambient lighting
- Bronze chandelier with translucent glass shades
- Recessed lighting

## DINING ROOM 22'9" X 14'9"

- Open flow from Foyer and Gallery Hall through classic columns
- Brazilian cherry hardwood flooring
- Octagonal tray ceiling lined with 5-step crown molding
- Paneled recess with 3 arched windows with transoms
- Five-step crown molding
- Bronze chandelier with translucent glass shades and 2 matching double wall sconce lights
- Recessed lighting

## GALLERY HALL 27'8" LENGTH

- Spans from Foyer to Kitchen
- Brazilian cherry hardwood flooring
- Wet bar with cherry base cabinets, granite top, cherry wall cabinet with LED multicolor illuminated shelves, marble backsplash, Colzer wine cooler, stainless steel undermount prep sink and under-cabinet lighting
- Built-up crown molding
- Bronze/translucent glass ceiling lights
- Full-width open flow to Great Room through classic columns

## GREAT ROOM 27'8" X 15'9"

- Two-story
- Brazilian cherry hardwood flooring
- Gas fireplace set in custom traditional arched mantel with marble surround and hearth, matching arched over-mantel with marble inset
- Custom built-in bookcases flanking and

- matching fireplace with glass shelves, base cabinets and lighting
- Two-story bowed bay window with paneled accents, fluted trim and wood blinds
- Five-step crown molding
- Open Brazilian cherry hardwood secondary staircase with hardwood handrails and wrought iron birdcage spindles
- Full-width banister overlook from upper level
- Recessed lighting
- Access to Kitchen at staircase with glazed door to Patio with wood blind

## KITCHEN 26'3" X 27'1"

- Patterned Italian porcelain tile floor
- Custom cherry solid wood cabinetry including island/breakfast bar, computer workstation, ceiling height cabinets, roll-out trays, pull-out trash/recycle bins, fluted trim and matching crown trim
- Granite counters
- Marble backsplashes with mosaic borders and decorative panel at range
- GE Monogram built-in stainless steel refrigerator with water/ice dispenser
- GE Monogram stainless steel gas range with 2 ovens, grill, griddle and range hood with lighting
- GE Monogram stainless steel under-counter built-in microwave
- Monogram stainless steel dishwasher
- Oversize Franke stainless steel undermount sink
- Stainless steel Franke undermount prep sink
- Large breakfast area in bay window with wood blinds and bronze chandelier with translucent glass shades
- Recessed lighting
- Under-cabinet lighting
- Walk-in pantry with frosted glass door
- Window
- Mahogany 2-1/4" thick exit door with leaded glass panel- to garage parking pad
- Samsung wall mounted TV
- Architectural cased archways to Gallery Hall and Back Hall
- Wide architectural cased archway with classic columns to Family Room

## FAMILY ROOM 31'7" X 22'8"

- Cathedral ceiling paneled in reclaimed heart pine with Amish built heart pine wood trusses
- Reclaimed wormy chestnut flooring
- Brick and stone walls
- Arched wood burning masonry fireplace on raised stone hearth with stone mantel shelf and stone accent panel above set in brick chimney
- Window wall with 5 stepped main level windows with custom Roman shades surmounted with 5 arched windows
- Seven additional main level windows with custom Roman shades
- Two sets of Marvin French doors with custom Roman shades to Patio
- Nine additional upper tier arched windows

- Two large bronze chandeliers with translucent glass shades
- Matching ceiling fan
- Recessed lighting

## BACK HALL

- Architectural cased archways from Gallery Hall and Kitchen
- Patterned Italian porcelain tile floor-same as Kitchen
- Five-step crown molding
- Bronze/translucent glass ceiling lights and wall sconce lights
- Two closets- 1 shelved
- Concealed staircase to Lower Level
- Access to Laundry Room, Powder Room and Garage

## LAUNDRY ROOM 11'10" X 10'1"

- Patterned Italian porcelain tile floor-same as Back Hall
- Arched window
- Five-step crown molding
- Built-in wall mounted shelving
- Whirlpool Duet washer and dryer
- Stainless steel utility sink
- Bronze/translucent glass ceiling light
- Recessed lighting

## POWDER ROOM

- Patterned Italian porcelain tile floor-same as Back Hall
- Kohler pedestal sink oval bronze mirror and overhead lighting
- Kohler flush
- Five-step crown molding
- Recessed lighting
- Exhaust fan

## GARAGE 36'5" X 23'8"

- Finished
- Oversized 3-car
- Automatic door openers
- Arched triple window with transom
- Four additional windows- 1 arched
- Fluorescent lighting

## PRIMARY SUITE

## SITTING ROOM 16'1" X 12'8"

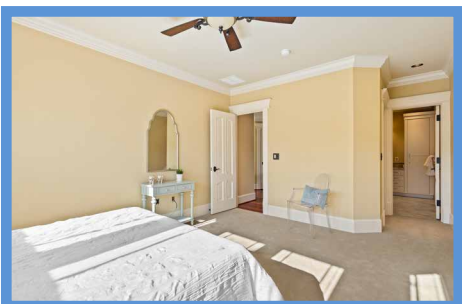
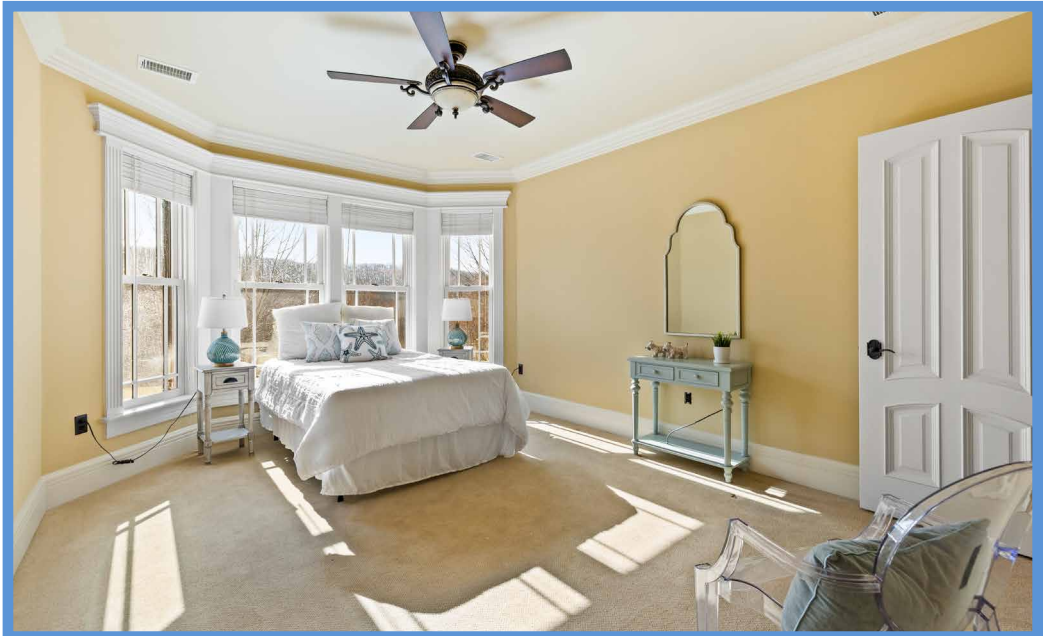
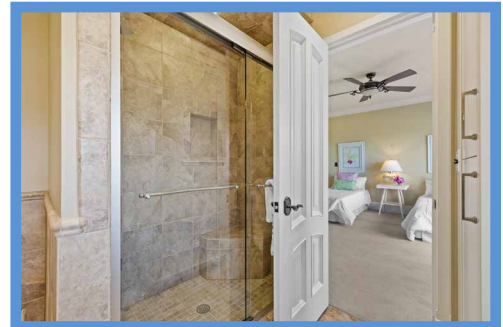
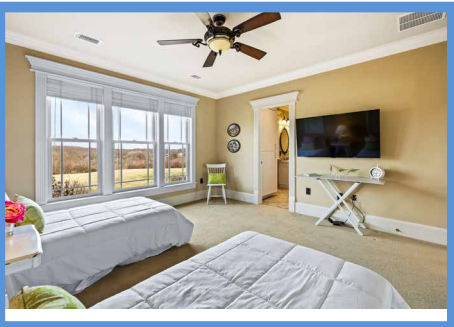
- Arched double doors from Foyer
- Brazilian cherry hardwood flooring
- Octagonal tray ceiling lined with 5-step crown molding
- French doors with pleated shades to Patio
- Crown molding
- Walk-in closet
- Access to Primary Bath
- Architectural cased archway to Primary Bedroom

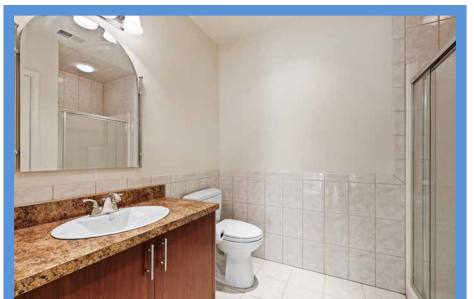
## PRIMARY BEDROOM

### 21'7" X 18'7"

- Brazilian cherry hardwood flooring
- Octagonal tray ceiling lined with 5-step crown molding
- Two double windows and 4 additional windows with pleated shades







- Crown molding
- Bronze/translucent glass ceiling fan with ceiling medallion
- Recessed lighting
- Samsung wall mounted TV

- Bronze/translucent glass ceiling fan with light
- Philips wall mounted TV
- Private Bath

- Well water tank and conditioning system
- Two water holding tanks
- Electric service panels- total 800 amps
- Tremendous finish potential

### PRIMARY BATH 16'3" X 14'4"

- Stone finish porcelain tile floor, wainscot, tub platform and shower stall with decorative cap moldings and accents
- Tray ceiling trimmed with crown molding
- Two custom cherry solid wood vanities each with granite top, Kohler sink, oval bronze mirror and overhead lighting
- Jacuzzi non-jetted soaking tub with platform cherry front panel
- Glass enclosed shower stall with built-in bench, rain shower, additional handheld shower, 4 body sprays and wall niche
- Water closet with Kohler flush
- Bay window at tub with pleated shades
- Crown molding
- Recessed lighting
- Exhaust fans

### BATH 3

- Stone finish ceramic tile floor, wainscot and shower stall
- Double vanity with marble top, Kohler sinks, oval bronze mirrors, overhead lighting and mirrored medicine cabinet
- Matching linen cabinets
- Shower stall with built-in bench, wall niche and glass doors
- Kohler flush
- Window with wood blind
- Crown molding
- Additional access from Hall
- Exhaust fan

### EXTERIOR

- Custom designed and custom built brick and stone home
- Architectural shingle roof with lightning rods
- Marvin windows
- Brick walkway to brick covered front porch at main entry with barrel-vault ceiling and classic columns
- Covered brick porch with classic column at parking pad with access to Kitchen
- Full-width herringbone pattern brick patio with stone columns with lanterns and access from Great Room, Family Room, Kitchen and Primary Suite
- Herringbone pattern brick walkways and porches
- Brick walls with lanterns flanking driveway entry with metal electronic gates
- Tree-lined estate drive with lamp posts
- Large parking pad between Workshop and attached 3-car Garage
- Professionally landscaped and maintained
- Stunning 57.85 acre hilltop setting with amazing panoramic north Baltimore County vistas

### BEDROOM 4 14'0" X 11'9"

- Wall-to-wall carpeting
- Bay window with wood blinds
- Crown molding
- Bronze/translucent glass ceiling fan with light
- Passage to private Bath with walk-in closet

### UPPER LEVEL

#### HALL

- Landing for main staircase with curved banister overlook to Foyer
- Secondary staircase with full-width banister overlook to Great Room
- Brazilian cherry hardwood flooring
- Five-step crown molding
- Recessed lighting

### BATH 4

- Stone finish ceramic tile floor, wainscot and tub surround
- Vanity with Kohler sink, oval bronze mirror and overhead lighting
- Matching linen cabinets
- Tub/shower combination
- Kohler flush
- Crown molding
- Rustic tiled door to storage room with security system
- Recessed lighting
- Exhaust fan

### BEDROOM 2 23'8" X 15'7"

- Wall-to-wall carpeting
- Double window and additional window with wood blinds
- Crown molding
- Walk-in closet
- Bronze/translucent glass ceiling fan with light
- Sharp wall mounted TV
- Private Bath

### BEDROOM 5/GAME ROOM

- 42'6" X 22'1"
- Wall-to-wall carpeting
  - Bronze billiard lamp with translucent glass shades
  - Seating area with arched window
  - Five additional windows
  - Two bronze/translucent glass ceiling fans with lights
  - Recessed lighting

### CARRIAGE HOUSE

- Constructed to match house

### BATH 2

- Stone finish ceramic tile floor, wainscot and shower stall
- Vanity with granite top, Kohler sink, oval bronze mirror, overhead lighting and mirrored medicine cabinet
- Matching linen cabinets
- Shower stall with built-in bench, wall niche, additional handheld shower and glass door
- Kohler flush
- Crown molding
- Recessed lighting
- Exhaust fan

### LAUNDRY/UTILITY ROOM

- Ceramic tile floor
- Carrier and Bryant HVAC units
- Washer/dryer hookups
- LG washer

### MAIN LEVEL 47'11" X 28'0"

- Finished
- Concrete floor
- Two 2-car overhead garage doors with automatic door openers
- Four double windows
- Two entry doors with leaded glass panels
- Double utility sink
- Fluorescent lighting
- Full Bath with ceramic tile floor, wainscot and shower stall, vanity, shower stall with vinyl liner and glass door, closet, recessed lighting and exhaust fan
- Utility closet with Takagi propane tankless water heater
- Open staircase to Upper Level

### BEDROOM 3 14'10" X 14'3"

- Wall-to-wall carpeting
- Triple window with wood shades
- Crown molding
- Double closet

### LOWER LEVEL

- Approximate 3800 square feet
- Unfinished 9 foot 6 inch height
- Entire house spray foamed
- Rough-in partitions
- Leaded glass French doors to yard
- Three Carrier HVAC units
- Two Weil McLain propane gas-fired boilers
- Smart hot water supply tank

### UPPER LEVEL 47'11" X 15'2"

- Finished, 1 large loft room
- Painted plywood floor
- Two windows
- Ceiling lights
- Utility closet with Carrier HVAC unit with propane gas heat



*Hubble  
Bisbee*

CHRISTIE'S  
INTERNATIONAL REAL ESTATE

GREEN SPRING  
STATION  
410-321-1411



ANNAPOLIS  
410-321-1833

