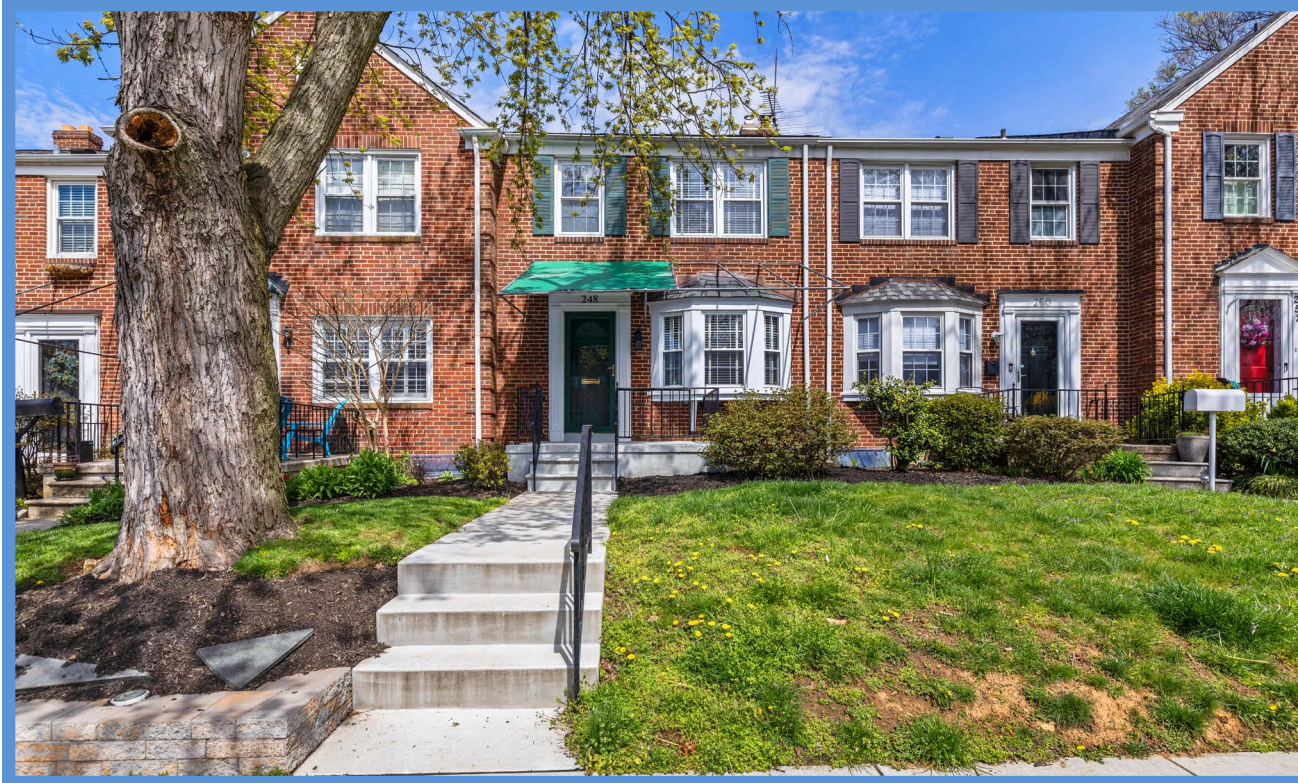


*Hubble  
Bisbee*

CHRISTIE'S  
INTERNATIONAL REAL ESTATE



248 BRANDON ROAD  
RODGERS FORGE

LOCATIONS

2330 W Joppa Road, Suite 104  
Lutherville, MD 21093  
181 Harry S Truman Pkwy Ste 200  
Annapolis, MD 21401



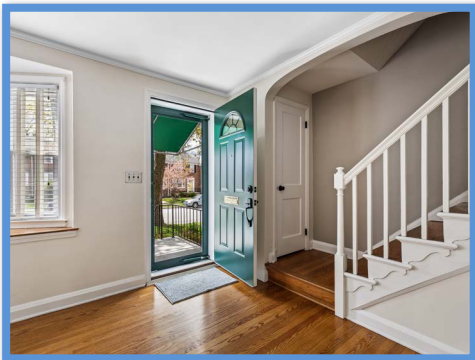
PETER DIMITRIADES

Realtor®  
Pete@HubbleBisbee.com  
443-226-0651 (Mobile)  
410-321-1411 (Office)



WWW.HUBBLEBISBEE.COM





**LIVING ROOM** 15' X 15'

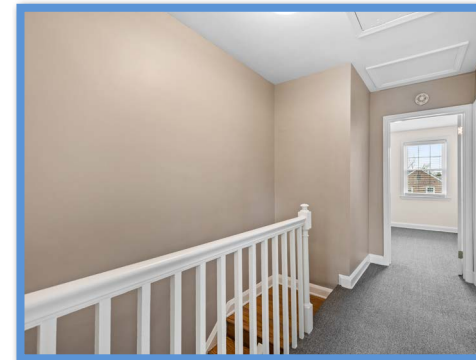
- Replaced paneled entry door with half-round window and full-view storm door
- Hardwood flooring
- Open hardwood staircase in archway with hardwood handrails
- Bay window with plantation blinds
- Crown molding
- Closet
- Archway to Dining Room

**PRIMARY BEDROOM**

- 14' X 11'
- Wall-to-wall carpeting
  - Double window with plantation blinds
  - Double closet with mirrored doors
  - Ceiling fan with light

**LAUNDRY ROOM**

- Marble finish porcelain tile floor
- Maytag washer and dryer
- Wall cabinet
- Transom window
- Exit door
- Recessed lighting
- Access to Bath and Utility Room



**DINING ROOM** 15' X 9'

- Hardwood flooring
- Atrium door to Deck
- Recessed lighting
- Open flow to Kitchen

**BEDROOM 2** 14' X 10'

- Wall-to-wall carpeting
- Double window with plantation blinds
- Double closet
- Ceiling fan with light

**BATH**

- Marble finish porcelain tile floor and shower stall
- Modern vanity with framed mirror and overhead light
- Shower stall with glass door
- Glacier Bay flush
- Glass block window
- Recessed lighting
- Exhaust fan



**KITCHEN** 15' X 9'

- Hardwood flooring
- White Shaker style cabinets including island/breakfast bar, 42" wall cabinets, lazy-Susan base cabinet, roll-out trays, dovetailed drawers and matching crown trim
- Granite and laminate counters
- Glass-tile backsplashes
- Whirlpool refrigerator
- Tappan gas range with griddle
- GE Profile built-in microwave
- Whirlpool stainless steel dishwasher
- Stainless steel sink with Insinkerator disposal
- Double window
- Double pantry closet
- Recessed lighting
- Two pendant lights above island
- Staircase to Lower Level

**BEDROOM 3** 10' X 8'

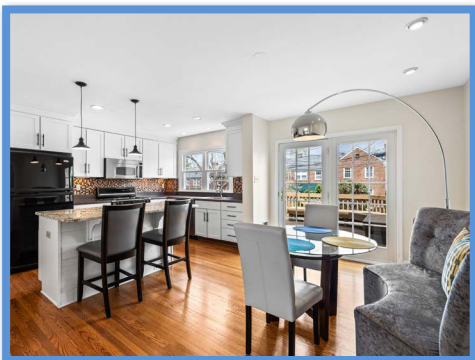
- Wall-to-wall carpeting
- Window with plantation blind
- Closet
- Ceiling light

**BATH**

- Ceramic tile floor and wainscot
- Kohler pedestal sink with round mirror and overhead light
- Tub/shower combination with ceiling light and glass doors
- Kohler flush
- Window with frosted lower sash
- Linen closet
- Exhaust fan

**UTILITY ROOM**

- Trane HVAC unit with gas heat
- Rheem gas-fired water heater
- Electric service panels
- Sump pump
- Wall mount shelving



**LOWER LEVEL**

**FAMILY ROOM** 20' X 18'

- Staircase access from Kitchen
- Marble finish porcelain tile floor
- Transom window
- Built-in bookcase
- Recessed lighting
- Double closet
- Under-stair storage closet

**EXTERIOR**

- All brick
- Asphalt shingle roof
- Replaced windows and doors
- Water main and sewer line replaced
- Elevated deck with built-in wraparound bench seating and steps to yard
- Hard-scaped back yard with border gardens and privacy fencing with gate to alley
- Much sought after quiet Rodgers Forge location convenient to Towson, Greenspring Station and downtown Baltimore



**UPPER LEVEL**

**HALL**

- Landing for staircase with banister overlook
- Wall-to-wall carpeting

