

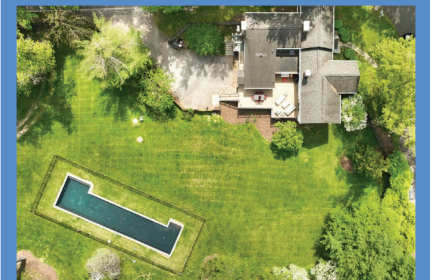
*Hubble
Bisbee*

CHRISTIE'S
INTERNATIONAL REAL ESTATE



GREENSPRING VALLEY

834 HILLSIDE ROAD



LOCATIONS

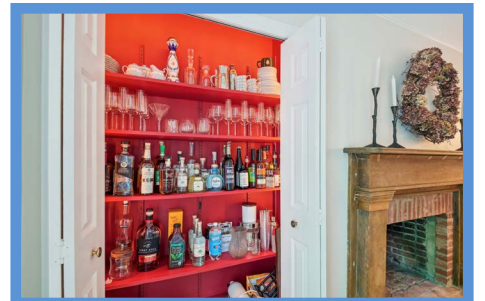
2330 W Joppa Road, Suite 104
Lutherville, MD 21093
181 Harry S Truman Pkwy Ste 200
Annapolis, MD 21401

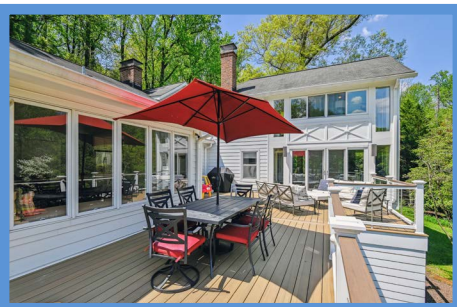


LYNN PLACK

Realtor®
LynnPlack@HubbleBisbee.com
410-340-2939 (Mobile)
410-321-1411 (Office)

WWW.HUBBLEBISBEE.COM | (410) 321-1411 (OFFICE) |  





LIVING ROOM 20'7" X 13'2"

- Paneled entry door with sidelights
- Hickory hardwood flooring with new subflooring- 2023
- Open vintage staircase with refinished treads, hardwood handrail and newel post, painted tapered spindles
- Wood burning fireplace with natural wood traditional mantel, brick surround and hearth, glass door enclosure
- Full height built-in bookcases
- Two Marvin windows (2024) and additional window at staircase
- Recessed light
- Dual access to Family Room flanking fireplace with closet under staircase
- Access to Dining Room

DINING ROOM 14'8" X 11'9"

- Hickory hardwood flooring- 2023
- Wood burning fireplace with traditional natural wood mantel, brick surround and hearth
- Double bi-folding doors concealing bar with display shelving
- French doors/window
- Two brass double wall sconce lights with shades
- Access to vestibule at Kitchen and Den with back staircase to Upper Level
- Additional passage to Office with staircase to Lower Level

OFFICE 15'0" X 10'9"

- Hickory hardwood flooring- 2023
- Wood burning fireplace with natural wood traditional mantel, brick surround and hearth, glass door enclosure
- Built-in bookcases with base cabinets and lighting
- Three windows with shutters
- Recessed lighting
- Carrier HVAC wall unit

KITCHEN 14'0" X 10'1"

- Ceramic tile floor
- Vaulted wood paneled ceiling
- Raise panel cabinetry including pantry cabinet, roll-out trays, pot-pan drawers, upper storage cabinets, leaded glass door cabinet and microwave shelf
- Laminate counters
- Ceramic tile backsplashes
- Brass ladder rail along upper cabinets
- Full length brass towel bar on counter edge
- Kenmore refrigerator with water-ice dispenser
- Dacor 5-burner electric cooktop with retractable downdraft vent
- Range hood with lighting
- Two Whirlpool under-counter ovens
- GE microwave

- Bosch dishwasher with custom front panel- 2024
- Stainless steel full-sized double sink
- Wide picture window
- Track lighting
- Under-cabinet lighting
- Pocket door to Family Room
- Open flow to Breakfast Room

BREAKFAST ROOM 14'0" X 13'8"

- Ceramic tile floor same as Kitchen
- Vaulted wood paneled ceiling same as Kitchen
- Window wall with full-width built-in window seat bench with custom cushions and valence
- Two glazed exit doors to Deck
- Upper oval window
- Two brass wall sconce lights with shades
- Track lighting
- Ceiling fan
- Large pantry closet
- Carrier HVAC wall unit

FAMILY ROOM 18'0" X 17'2"

- Hickory hardwood flooring with new subflooring- 2023
- Exposed brick chimney with wood burning fireplace with natural wood traditional mantel, brick surround and hearth, glass door enclosure
- Natural finish wood ceiling beam with posts
- Two windows with pleated shades
- Recessed light
- Dual access from Living Room
- Access to Powder Room
- French doors to Sunroom

SUNROOM 17'8" X 15'7"

- Laminate flooring
- Three walls of windows including sliding doors to Deck and 2 additional sets of sliding door/windows with exterior wood railing
- Recessed lighting
- In-wall supplemental electric heater

LAUNDRY/POWDER ROOM

- Marble finish porcelain tile floor
- Shaker style base and wall cabinets with quartz folding counter above LG washer and dryer
- Modern vanity with granite top and vessel sink
- Flush
- Window with plantation shutters
- Recessed lighting

SECOND FLOOR

HALL

- Landing for main staircase with vintage banister overlook
- Hickory hardwood flooring- 2023
- Ceiling light

- Access to Primary Bedroom, Bedroom 2, Hall Bath and additional access to Bedroom 3

PRIMARY BEDROOM 17'0" X 13'2"

- Wall-to-wall carpeting
- Vaulted ceiling with central beam
- Exposed brick chimney with wood burning fireplace with traditional natural wood mantel, brick surround and hearth
- Three windows with pleated shades
- Recessed light
- Ceiling fan
- Passage to Primary Bath with custom fitted walk-in closet and additional walk-in closet
- French doors to Sitting Room
- Wall mounted TC excluded, bracket to remain

SITTING ROOM/SUNROOM 17'3" X 15'6"

- Reclaimed hardwood flooring
- Vaulted ceiling with beams
- Three walls of windows including sliding doors/window with exterior wood railing
- Built-in bookcase
- Recessed lighting
- Samsung wall mounted TV

PRIMARY BATH

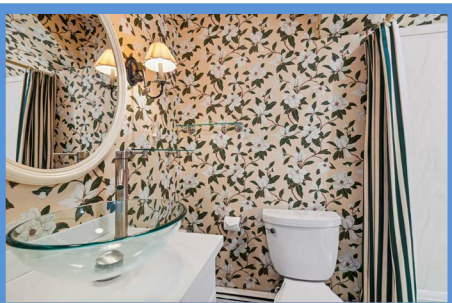
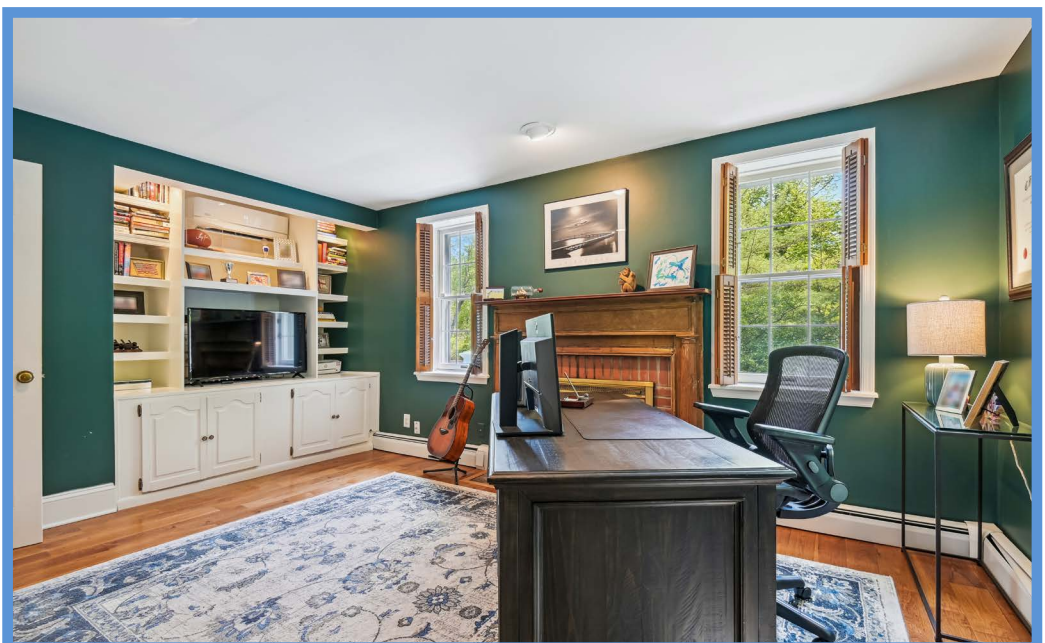
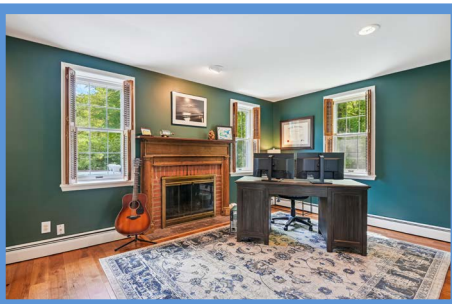
- Ceramic tile floor and shower stall to ceiling
- Modern vanity with marble top, matching framed mirror and wall cabinets, modern overhead lighting
- Full-width shower stall with built-in seat, additional handheld shower full-height glass side panels and recessed light
- Bidet
- Window with lower sash shutters
- Modern suspended track lighting
- Ceiling light/exhaust fan

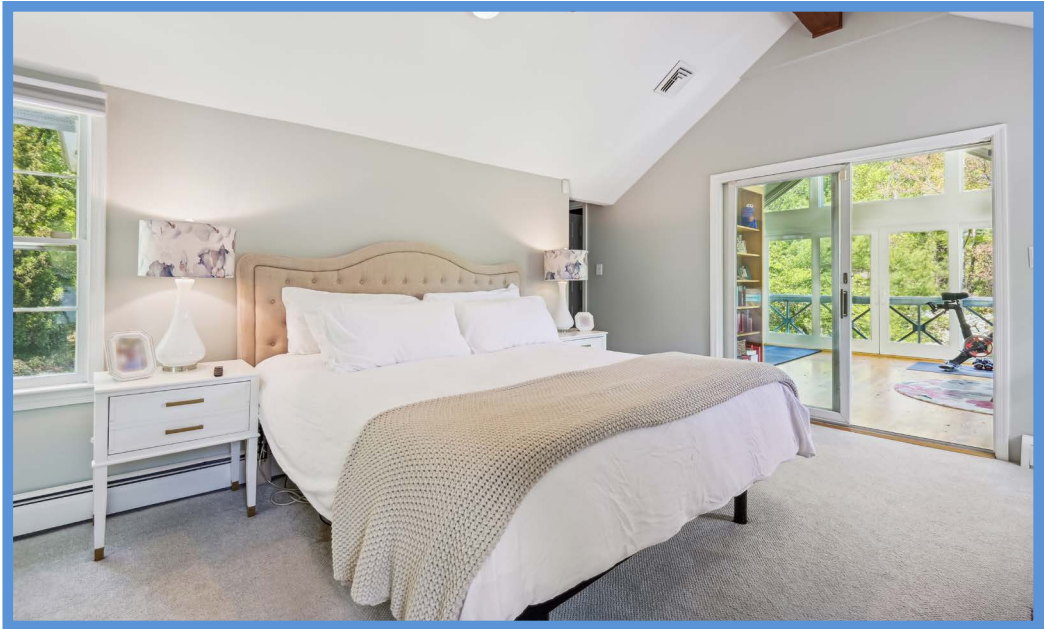
BEDROOM 2 16'7" X 13'2" (IRREGULAR)

- Hickory hardwood flooring- 2023
- Vaulted ceiling with central beam
- Three windows with pleated blackout shades
- Chair rail
- Double closet with new bi-fold doors
- Ceiling fan

HALL BATH

- Glass tile floor
- Vanity with solid surface top, glass vessel sink, framed oval mirror and wall sconce light with shade
- Shower stall with Corian surround panels
- Wall mounted glass shelving
- Recessed light
- Ceiling light/exhaust fan





BEDROOM 3 14'4" X 11'10"

- Access from back staircase
- Hickory hardwood flooring- 2023
- Wood burning fireplace with traditional natural wood mantel, brick surround and hearth
- Three windows with pleated shades
- Double closet
- Recessed light
- Access to Shared Bath
- Additional access from Hall

BEDROOM 4 17'7" X 10'8"
(IRREGULAR)

- Hickory hardwood flooring- 2023
- Wood burning fireplace with traditional wood mantel, brick surround and hearth
- Three windows with pleated blackout shades
- Access to Shared Bath

SHARED BATH

- Ceramic tile floor
- Modern vanity with framed mirror and wall sconce lighting
- Tub/shower combination with ceramic tile surround, vertical glass tile accent panel and recessed light
- Linen cabinet
- Ceiling light
- Exhaust fan

LOWER LEVEL

- Staircase access from Dining Room or Office

STORAGE ROOM

- Window
- Exit door
- Kenmore refrigerator
- Under-stair storage
- Electric service panels with 2 additional panels on main level

- Washer and dryer hookups
- Freezer excluded

FURNACE ROOM

- Weil McLain oil-fired boiler for hot water baseboard heat
- Bock oil-fired water heater
- Fuel oil storage tank
- Sump pump

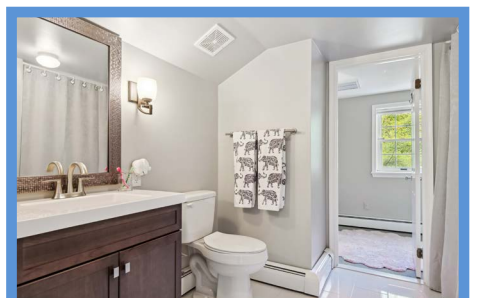
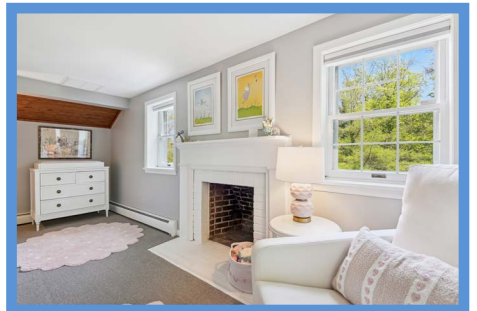
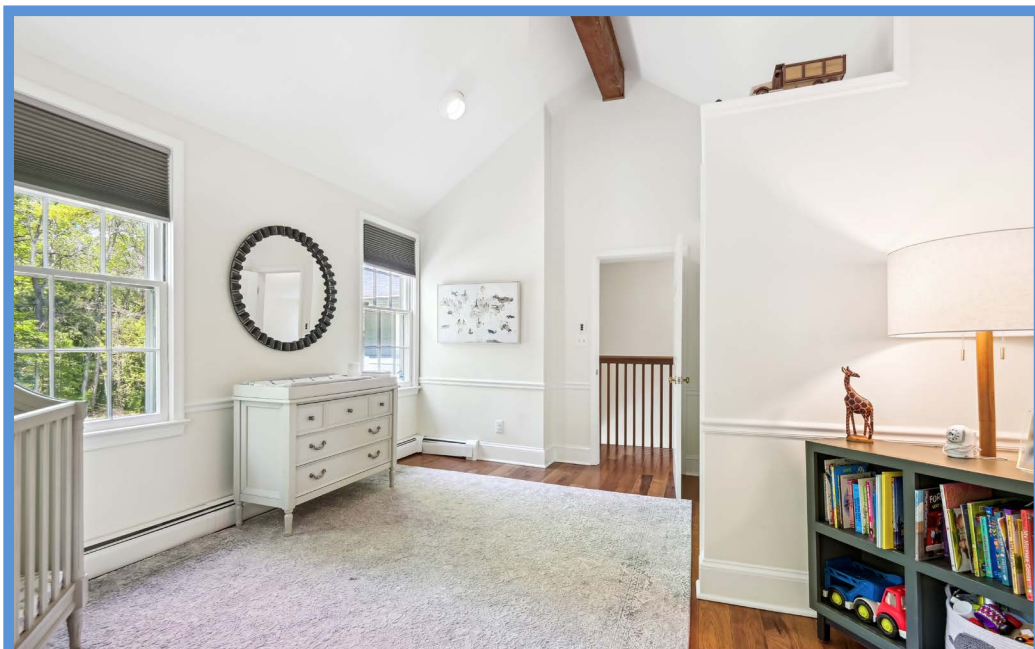
EXTERIOR

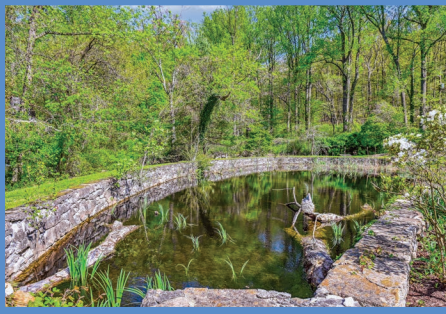
- Thoroughly renovated and expanded 19th century farmhouse
- Hardiplank siding- 2022
- Asphalt shingle roof- 2006
- Flagstone walkway to covered main entry porch with traditional columns
- Wraparound engineered wood Deck (2022), built by Brintnall Deck Works with TimberTech composite rails with stainless steel cables, 2 gated staircases to Garage/parking area, deck and tread lighting (on timers), access from Breakfast Room and Sunroom
- Tremendous fenced back yard with 8-foot high fencing
- Fenced in-ground saltwater pool maintained by Atlantic Pools, Inc.
- Five fenced raised garden beds with organic soil
- Outside access to Pool Changing Room with carpet over concrete floor, beadboard ceiling, wall mounted coat hook racks, window, recessed lighting and access to utility room with well water tank and conditioning system
- Stone walled freshwater holding pond with sluice
- Circular driveway at main entry with large parking pad areas
- Fenced and gated parking pad at Garage with staircases to deck and gate to yard
- Two car Garage with automatic door openers and outside access from Deck

- Outside access to unfinished storage room
- Landscaped 3.31 acres with extensive landscape lighting

IMPROVEMENTS

- Hardiplank siding- 2022
- New shutters on front of house- 2022
- New Baths- 2005, 2010, 2013 and 2016
- Teardown and rebuilding of 2-story porch addition with air conditioning- 2006
- Roof replaced 2006
- Landscape lighting 2007 and 2010
- Invisible fence around entire yard- currently turned off
- Eight-foot fencing of entire property 2014
- Pool coping stones removed and re-set 2018
- Pool filter replaced 2018
- All kitchen appliances replaced 2012, refrigerator 2013, dishwasher 2024
- Kitchen lighting 2015
- Central air conditioning 2017
- Well water tank 2018
- Pump rooms reinsulated and encapsulated 2016
- New septic system lines 2017
- Well water tested every 6 months
- Septic system cleaned and inspected 2024
- Chimneys inspected 2021 by Clean Sweep, report available





*Hubble
Bisbee*

CHRISTIE'S
INTERNATIONAL REAL ESTATE

GREEN SPRING
STATION
410-321-1411

ANNAPOLIS
410-321-1833

