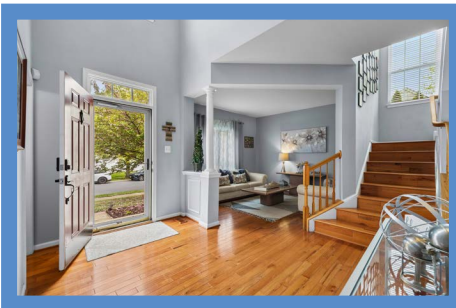


Hubble
Bisbee

CHRISTIE'S
INTERNATIONAL REAL ESTATE



WORTHINGTON OVERLOOK
843 QUEENS PARK DRIVE



LOCATIONS

2330 W Joppa Road, Suite 104
Lutherville, MD 21093

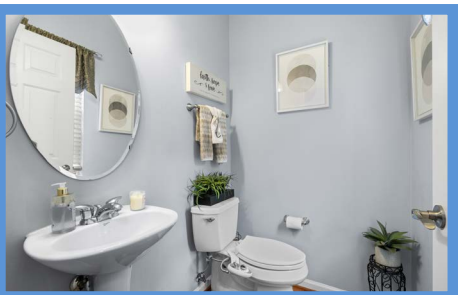
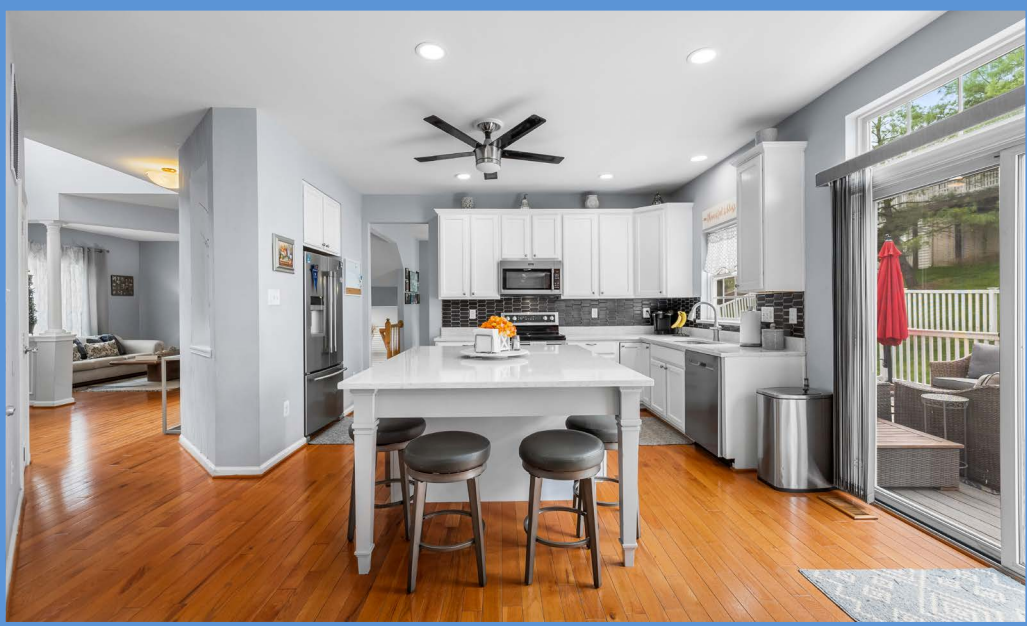
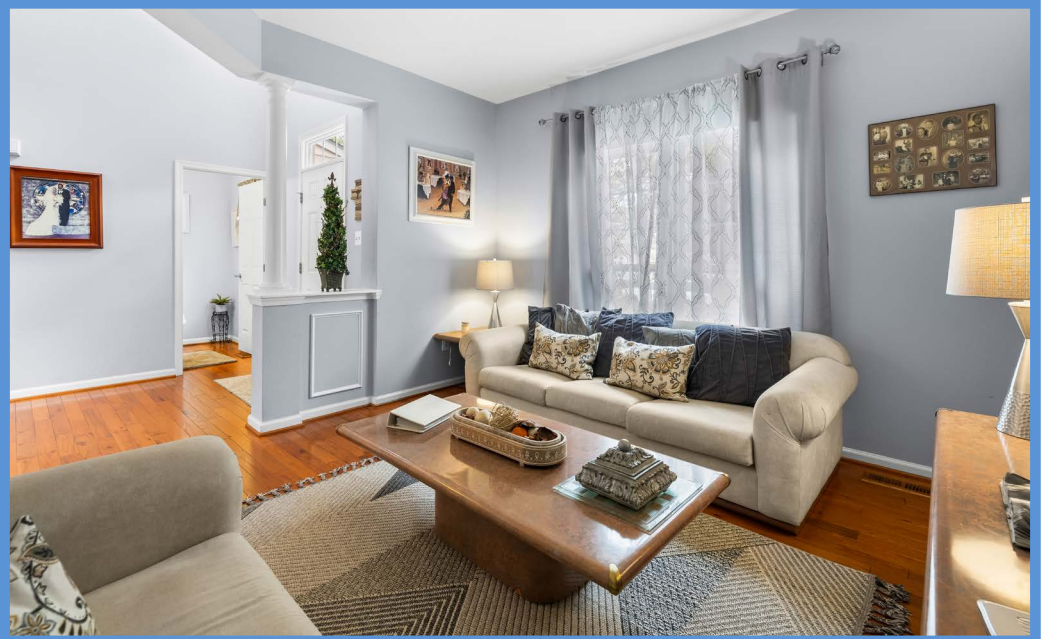
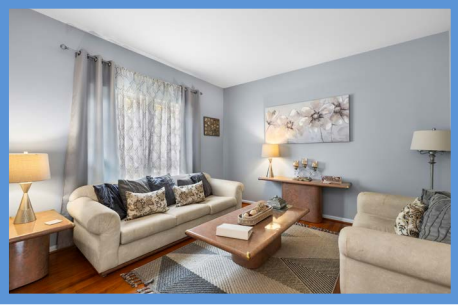
181 Harry S Truman Pkwy Ste 200
Annapolis, MD 21401

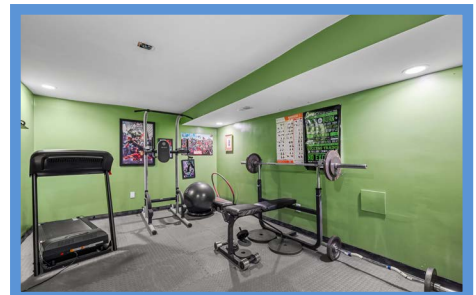


KEISHA MCCLAIN

Realtor®
KeishaMcClain@HubbleBisbee.com
443-414-2168 (Mobile)
410-321-1411 (Office)

WWW.HUBBLEBISBEE.COM | (410) 321-1411 (OFFICE) | 





FOYER

- Paneled entry door with transom
- Two-story
- Hardwood flooring
- Open oak staircases to Upper and Lower Levels each with hardwood handrails and double window on mid-landing with plantation blinds
- Powder Room with pedestal sink, oval mirror and overhead lighting, Kohler flush, window with plantation blind and exhaust fan
- Window above entry
- Passage to Kitchen with illuminated display niche and access to Laundry Room
- Brass chandelier
- Ceiling light
- Closet
- Flows to Dining Room
- Open flow to Living Room with kneewall and classic column

LIVING ROOM

- Hardwood flooring
- Double window with drapery treatment

DINING ROOM

- Hardwood flooring
- Two windows with plantation blinds and drapery treatments
- Four-light chandelier with glass shades
- Access to Kitchen

KITCHEN

- Hardwood flooring
- Recess-panel wood cabinetry including base and wall cabinets, island/breakfast bar, lazy-Susan base cabinet and matching crown trim
- Quartz counters
- Ceramic tile backsplashes
- Maytag stainless steel French door refrigerator with water-ice dispenser
- Maytag stainless steel electric range with warm zone
- Maytag stainless steel built-in microwave
- Maytag stainless steel dishwasher
- Stainless steel undermount double sink with Insinkerator disposal
- Sliding glass doors to Deck with transom and vertical shades
- Window
- Recessed lighting
- Ceiling fan with light
- Open flow to Family Room

FAMILY ROOM

- Hardwood flooring
- Woodburning fireplace with colonial mantel, marble surround and hearth, glass doors
- Two windows with transoms, plantation blinds and drapery treatments

- Recessed lighting
- Wall mounted TV excluded, bracket to remain

LAUNDRY ROOM

- Ceramic tile floor
- LG stacked washer and dryer
- Ceiling light
- Access to Garage

GARAGE

- Two-car
- Finished
- Automatic door opener with exterior keypad

UPPER LEVEL

HALL

- Landing for staircase with banister overlook
- Banister overlook to Foyer
- Hardwood flooring
- Brass/glass pendant light above staircase
- Ceiling light

PRIMARY BEDROOM

- Double door entry
- Wall-to-wall carpeting
- Two windows with plantation blinds and drapery treatments
- Walk-in closet
- Ceiling fan with light

PRIMARY BATH

- Ceramic tile floor, tub platform and shower stall walls
- Double vanity with solid surface top and seamless sinks, arched mirrors, overhead lighting and mirrored medicine cabinet
- Soaking tub
- Glass-enclosed shower stall with additional handheld shower
- Water closet with Jacuzzi flush, window with plantation blind and exhaust fan
- Double window and additional window at tub with plantation blinds
- Recessed lighting

BEDROOM 2

- Wall-to-wall carpeting
- Two windows with plantation blinds and drapery treatments
- Double closet

BEDROOM 3

- Wall-to-wall carpeting
- Double window with plantation blinds
- Double closet

BEDROOM 4

- Wall-to-wall carpeting
- Two windows with plantation blinds and drapery treatments
- Double closet

HALL BATH

- Ceramic tile floor and tub surround

- Double vanity with solid surface top and seamless sinks, plate glass mirror, overhead lighting and mirrored medicine cabinet
- Tub/shower combination
- Linen closet
- Exhaust fan

LOWER LEVEL

RECREATION ROOM

- Wall-to-wall carpeting
- Window and 2 additional transom windows with plantation blinds
- Powder Room with vinyl flooring, vanity with solid surface top and seamless sink, plate glass mirror and overhead lighting, linen closet and exhaust fan
- Recessed lighting
- Under-stair storage closet
- Access to unfinished storage room
- Wall mount TV excluded, bracket to remain

EXERCISE ROOM

- Low-impact floor covering
- Recessed lighting
- Wall mount TV excluded, bracket to remain

UTILITY ROOM

- Trane HVAC unit with gas heat
- AO Smith gas-fired water heater

EXTERIOR

- Colonial style single family home
- Beaded vinyl siding
- Asphalt shingle roof
- Fenced back yard with white vinyl fencing
- Engineered wood deck with vinyl railings with post lighting and 2 staircases to yard with tread lighting
- Garden shed

